

# PRIVATE TREATY DIRECT SALE



123



138



Ex 142



152



253



189



208



263



300



316



313



349

VIEW THIS LIST ONLINE AT [WWW.AUCKLANDCITYSTAMPS.CO.NZ](http://WWW.AUCKLANDCITYSTAMPS.CO.NZ)  
 NO BUYER'S COMMISSION



1



4



5



Ex 11



Ex 14



Ex 15



Ex 17



18



19



20



37



42



Ex 43



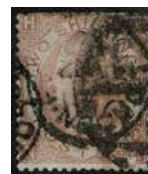
Ex 49



Ex 55



60



62



63



66



68



69



70



71



78



Ex 80



88



Ex 89



Ex 91



93



Ex 94



Ex 95



97



Ex 98



Ex 99



100



103



Ex 102

# AUCKLAND CITY STAMPS 50<sup>TH</sup> ANNIVERSARY PRIVATE TREATY DIRECT SALE

Auckland City Stamps was founded fifty years ago in 1974 by Terry Welch with David joining the business as a 16 year old in 1977. Nigel made his first visit to the first Vulcan lane premises as an 8 year old in 1980, where a Blue Boy was purchased for him by his grandfather. There's certainly a life long connection with Auckland City Stamps for David and Nigel.

Welcome to our special Auckland City Stamps 50th Anniversary Private Treaty Direct Sale Catalogue. Our special offering covers World & New Zealand Stamps & Covers as well as some Collection lots. All are available for DIRECT SALE on a first come, first served basis.

In World Stamps the highlights include Item 1 Australia 1913/14 10/- Roo SG 14 tied by an Aerial Post cancel (\$500), Item 12 Australian Antarctic 1961 6x Hand drawn Covers (\$100), Item 19 Canada 1897 \$2 Jubilee Mint (\$750), Item 21 Ceylon 1955 Bank of Ceylon Mail Tags (\$250), Item 30 China 1980 Gu Dong Booklet (\$400), Item 41 Falkland Islands 2x Early Postcards to NZ (\$1500), Item 45 France Large Registered Commercial Cover with stamps to the value of 1234f (\$450), Item 58 Great Britain 10x 1840 QV 1d Blacks Used (\$500), Item 62 Great Britain 1867/80 2/- Brown Used (\$750), Item 78 Great Britain 1902 KEVII 1/- Government Parcels Mint (\$1000), Item 80 Hong Kong KEVII Set no 50c Used to \$10 (\$1000), Item 85 Japan 1937 Karl Lewis Hand drawn Painted First Day Cover (\$100), Item 106 New South Wales QV 10d Die Proof (\$250), Item 114 PNG Postage Due D1 Used (\$450), Item 116 Pitcairn Island 1938 Radio QSL Card Used (\$200), Item 121 Queensland Development Revenue Proof Set (\$250), Item 123 1914 GRI 3/- on 3m Used (\$1000), Item 138 USA 1893 \$5 Columbus Used (\$1000), Item 142 1930 Graf Zeppelin Set Unhinged (\$1500) and Item 150 Western Australia 1907 Supreme Court High Value (\$300).

In New Zealand Stamps the highlights include Item 152 1/- Green No Watermark SG 6 Imperf (\$2500), Item 171 First Sideface Mint Set (\$1875), Item 180 1d Rose 3rd Setting Advertisement Reconstructed 4 Panes of 60 (\$1000), Item 189 1906 1d Claret Christchurch Exhibition Mint (\$20,000), Item 206 1935 Pictorials Set of Collins Essays in Black (\$1500), Item 209 1935 5d Swordfish Coil Pair Mint (\$4000), Item 218 Unadopted Royal Family Essay for the Proposed 1952 Royal Visit (\$500), Item 223 1940 Centennial Official First Day Cover (\$1000), Item 237 1970 1/2c Butterfly Perforation Error Block (\$2000), Item 251 1977 Silver Jubilee Min Sheet Imperf (\$1750), Item 266 2020 Kiwi Booklet Imperf (\$1000), Item 270 Antarctic Signed First Day Cover (\$500), Item 289 1931 Red & Blue Boys Blocks of 4 Used (\$1250), Item 293 1934 Health Crusader First Day Cover (\$3000), Item 300 1905/06 2d No VR Life Insurance Mint (\$2000), Item 313 Arms 25/- Blue Used (\$1000), Item 320 Fine Paid Piece incl 35/- QV Yellow Pair (\$5000) and Item 323 KGV 1/- Passport Fee (\$500).

In New Zealand Postal History the highlights are Item 332 1864 Dunedin Exhibition item (\$450), Item 335 1875 4/Onehunga/A First Sideface Cover (\$750), Item 340 1898 Pictorial Cover (\$450), Item 349 1921 Airmail Cover Ashburton to Christchurch (\$600), Item 357 WW2 Pahiatua Internment Camp Cover (\$500), Item 360 1900 Missent to Invercargill Switzerland Cover (\$850) and Item 378 1903 RMS Sonoma Postcard to Germany (\$300)

In Collections the highlights are Item 392 Australia & Territories (\$1000), Item 394 Belgium Postal History lot (\$900), Item 400 China Collection (\$750), Item 408 Great Britain Early Collection (\$1500), Item 419 Malaya BMA Cover lot (\$1500), Item 433 NZ KGV Exhibition 16 Page Collection (\$2000), Item 439 NZ 1937 Coronation First Day Cover lot (\$3500), Item 441 NZ 1940 Centennial First Day Cover lot (\$2000), Item 443 NZ 1946 Peace First Day Cover lot (\$2750), Item 448 NZ 1970 Definitives Collection (\$2500), Item 452 NZ Cinderella Collection (\$1000), Item 458 NZ Postmark Collection (\$500), Item 461 NZ Social Security Dealer's Stockbook (\$1000), Item 465 North Borneo Cover lot (\$500), Item 478 British Caribbean Stockbook (\$900), Item 481 British Commonwealth Collection (\$950), Item 491 Pim & Co British Commonwealth Stockbook (\$900).

For further information or to order, please telephone or e-mail us today as all items are available on a first come, first served basis.

We look forward to being of assistance.

David Holmes  
Auckland City Stamps  
david@aucklandcitystamps.co.nz

Nigel Shanks  
Auckland City Stamps

PO Box 99988  
Newmarket  
Auckland 1149 NZ

Ph +64 9 522 0311  
david@aucklandcitystamps.co.nz  
www.aucklandcitystamps.co.nz

LOT		NZ\$	LOT		NZ\$	
<b>WORLD STAMPS &amp; COVERS</b>			<b>BRITISH SOLOMON ISLANDS</b>			
	<b>AUSTRALIA</b>		15	U	1908/11 Small Canoe Definitives Set SG 8/17 Very Good to Fine Used. Scarce. SG Cat £275 (11) PHOTO-PLATE 1	275
1	U	500	16	C	1955 (15MR) Airmail Cover addressed to 'The Registrar, University of Otago, Dunedin NZ' with KGVI 2d & 6d Definitives cancelled in Manuscript 'Barakoma'. Includes the letter contents. No back-stamps (1)	50
2	C	100			<b>BRUNEI</b>	
	1928 Broadcasting Co of Aust Pty Ltd Picture Postcard of Captain Kingsford Smith, Pilot and Leader and Mr C T P Ulm, relieving Pilot of the great Trans-Pacific Flight from America to Australia June 1928. Has facsimile signatures of C Kingsford Smith & C Ulm. The card has slight faults at top left and bottom right. Historical Item (1) PHOTO-PLATE 4		17	U	1895 Definitives Set SG 1/10 Fine Used. Very Scarce. SG Cat £450 (10) PHOTO-PLATE 1	450
3	C	100			<b>CANADA</b>	
	1931 (MR16) Cover with 1930 Sturt Pair tied by LORD HOWE ISLAND cancels to England. The cover has a little ageing. Scarce (1) PHOTO-PLATE 4		18	*	1897 QV \$1 Lake Jubilee SG 136 Good Mint. Centred a little to the top. SG Cat £600 (1) PHOTO-PLATE 1	250
4	U	200	19	*	1897 QV \$2 Deep Violet Jubilee SG 137 Good Mint. Very Scarce. SG Cat £1100 (1) PHOTO-PLATE 1	750
	1931/36 Roo £1 Grey SG 137 Good Used SG Cat £300 (1) PHOTO-PLATE 1		20	*	Registration 1875/92 8c Bright Blue SG R8 Mint No Gum Scarce. SG Cat £500 (1) PHOTO-PLATE 1	200
5	U	125			<b>CEYLON</b>	
	1931/36 Roo 10/- Grey & Pink SG 136 Good Used SG Cat £160 (1) PHOTO-PLATE 1		21	C	1955 BANK of CEYLON 22x Mail Tags mostly addressed to the Central Office, Colombo bearing various stamps, cancels and cachets. Some with EXPRESS cachets or Express in manuscript. 14x Complete Mail Tags, the others slightly trimmed. A few with odd creasing. Interesting lot (22)	250
6	C	50			<b>CHINA</b>	
	1934 (16NO) Printed First Australian Autogiro Flight Postcard Eustis #461 Posted at Portland with blue Airmail Society of Australia cachet. The stamp has minor perf staining. Scarce (1)		22	*	1950 Gate of Heavenly Peace Set SG 1412/20 Mint No Gum as issued. Cat £86 (9)	80
7	C	150	23	U	1958 700th Anniv of Works of Kuan Han-Ching Min Sheet SG MS1762a Fine Used SG Cat £160 (1)	150
	1934 (18OC) MacRobertson Air Race Cover from England to Australia. The cover carried on DH89 Dragon Rapide 'Tainui' ZK-ACO with blue cachet. Signed by C E kay. Eustis #438. Fine Item (1)		24	U	1961 26th World Table Tennis Championships Min Sheet SG MS1971a Fine Used with Special Cancel. SG Cat £450 (1) PHOTO-PLATE 4	450
8	C	150	25	U	1967/68 Poems of Mao Tse-tung 8f SG 2378/2379 Fine Used SG Cat £310 (2)	250
	1936 (28NO) Airmail Cover with 1/6 Hermes tied by THURSDAY ISLAND/QUEENSLAND cancel to England, 1937 (13MY) KGVI 1d QM & 2d KGVI values tied on Printed First Day Cover by THURSDAY ISLAND/QUEENSLAND cancel to England and 1941 (6MY) Cover with KGVI 2d tied by THURSDAY ISLAND/QUEENSLAND cancel also to England. Minor crease to the first cover. (3 Covers)		26	*	1972 30th Anniv of the Publication of Yen'an Forum's Discussion on Literature & Art Set SG 2474/79 Mint No Gum as issued. SG Cat £110 (6)	100
9	C	100	27	**	1978 Arts & Crafts Min Sheet SG MS2815 Unhinged SG Cat £225 (1) PHOTO-PLATE 3 PHOTO-PLATE 4	200
	1940 (13MR) Cover with KGVI 2d tied by fine LORD HOWE ISLAND/NSW cancel and 1948 (4MY) Registered Roger Wells Cover with Peace set tied by 3x LORD HOWE ISLAND cancels to England (2 Covers)		28	**	1979 Camellias of Yunnan Hong Kong Exhibition Min Sheet SG MS2923 Unhinged SG Cat £300 (1) PHOTO-PLATE 4	300
10	C	150	29	C	2000 ASIASAT 1 Space/Satellite Printed Commemorative Cover (1)	25
	1944 (24AU) GB KGVI 6d Airletter endorsed 'First Through British Air Mail England/Australia' First Civilian Mail addressed to 'W Hudson Fysh, Qantas Empire Airways Limited, Sydney' Signed by Commander D F McMaster who flew the Colombo-Perth section. Backstamped GPO Sydney/NSW 4 SE 44. Fine & Scarce (1)		30	**	Booklet 1980 Gu Dong SG SB10 Complete. Very Scarce. SG Cat £650/Scott Cat US\$900 (1)	400
	<b>AUSTRALIA OFFICIALS</b>		31	**	Booklet 1980 White Flag Dolphin Booklet SG SB11 Unhinged SG Cat £85 (1)	50
11	U	100	32	**	Booklet 1981 Year of the Cock Booklet SG SB12 Unhinged SG Cat £325 (1)	200
	1929/30 Small OS 9d Violet, 1/- Blue-Green, 2/- Maroon, 5/- Grey & Yellow SG O115/118 Fine CTO examples. Aust Retail \$195 (4) PHOTO-PLATE 1		33	**	Booklet 1982 Year of the Dog SG SB15 Unhinged SG Cat £90 (1)	50
	<b>AUSTRALIAN ANTARCTIC TERRITORY</b>		34	**	Booklet 1983 Terracotta Figures SG SB18 Unhinged SG Cat £225 (1)	100
12		150	35	**	Booklet 1983/1990 Year of Booklets SG SB17,20/26 Unhinged SG Cat £216 (8 Booklets)	100
	1961 (5JY) 5d Deep Blue SG 6 - 4x Handdrawn Illustrated Covers All Posted at HOMEBUSH/NSW PO and 1961 18 (OC) 5d Mawson SG 7 2x Hand-drawn Illustrated First Day Covers also Posted at HOMEBUSH PO. Fine Lot (6 Covers) PHOTO-PLATE 4				<b>CHRISTMAS ISLAND</b>	
	<b>BOLIVIA</b>		36	**	Booklet 1996 \$4.50 Fish Complete Unhinged, Very Scarce. Retail A\$400 (1)	250
13	**	100			<b>COCOS (KEELING) ISLAND</b>	
	1975/77 25b Imperf Concorde/Zepplin Min Sheet Unhinged (1)		37	U	OFFICIAL 1991 Official Paid Mainland SG O1 Fine Used Cat £90 (1) PHOTO-PLATE 1	100
	<b>BRITISH ANTARCTIC TERRITORY</b>					
14	**	250				
	1963/69 Definitives Set including £1 Endurance SG 1/15a Fine Unhinged. SG Cat £250 (16) PHOTO-PLATE 1					

LOT		NZ\$	LOT		NZ\$		
	<b>COOK ISLANDS</b>						
38	P	PROOFS 10d Brown & 10d Blue Defaced Die Proofs 70x100mm on white card lightly aged. Interesting Proof items (2) PHOTO-PLATE 4	200	53	C	1937 (8JY) Printed USS Colorado Cover enroute Howland Island and the Equator, searching for Miss Amelia Earhart and her navigator, Capt Fred Noonan, who were forced down. Fine Cacheted Cover. Interesting & Historical (1)	150
	<b>CYPRUS</b>						
39	U	1963 50th Anniv Scout Movement Set & Min Sheet SG 229/MS231a Fine Used Cat £182.50 (3+M/S) PHOTO-PLATE 5	175	54	C	1963 (16AP) Inwards Airmail Cover from Sydney, Australia with Manuscript 'T 1/-' with 1/- Postage Due SG D7 tied by Tarawa cancel. Very Scarce Postage Due Cover (1) PHOTO-PLATE 4	400
	<b>DENMARK</b>						
40	C	1914 (MY12) Special Flight from Copenhagen-Roskilde with Flight cachet & Bornehjaelps/Dagen cachet. Fine & Scarce (1) PHOTO-PLATE 4	150	55	U	Postage Dues 1940 Set SG D1/8 Very Good to Fine Used Cat £275 (8) PHOTO-PLATE 1	275
	<b>FALKLAND ISLANDS</b>						
41	C	1903 (5NO) Two Picture Postcards (1. View of Port Stanley 2. HMS Nympe in Stanley Harbour) both with QV 1d Orange-Brown tied by Falkland Islands cancels to New Zealand. Both have Montevideo 14 NO 03 transit cancels with Christchurch & Lyttelton 20 JA 04 receiving cancels. The first card has a minor tear. Very Scarce Destination Items (2) PHOTO-PLATE 4	1500	56	C	1930's 8x KONONGO GOLD MINES Real Photo Picture Postcards. Interesting lot (8)	150
	<b>FRANCE</b>						
42	*	1912/20 KGV £1 Black/Red SG 69 Good Mint Cat £550 (1) PHOTO-PLATE 1	500	57	C	1840 (JU9) Early Cover with QV 1d Black SG 2 tied by Red Maltese Cross cancel. Backstamped Liverpool. The cover has light soiling, minor creasing and a tear at top. SG Cat £750 (1) PHOTO-PLATE 4	250
	<b>FIJI</b>						
43	**	1903 KEVII Set SG 104/14 Unhinged Cat £450 (11) PHOTO-PLATE 1	500	58	U	1840 QV 1d Black 10x 2-3 Margin examples either with Black or Red Maltese Cross cancels. SG Cat £3750 (10)	500
	<b>FRANCE</b>						
44	C	1855 Entire with Imperf 20c Blue & 40c orange tied by Grid '441' cancel with a Bordeaux 20 FE 55 cancel to San Francisco (1)	200	59	U	1840 QV 1d Grey Black SG 3 Letters MA Has 4 Close to Good Margins with light Red Maltese Cross cancel. Has a thin on the back. SG Cat £500 (1)	100
45	C	1953 (21NO) Large Registered Airmail Opened out Cover addressed to 'The Commissioner, Snowy Mountains Hydro-Electric Authority, Cooma, NSW, Australia' Parcel No 1 Contract No 20.004 with 1949 1000f Air SG 1059 x 12 (1x damaged) plus 2x 15c Marianne & 2x 2f Coat of Arms = 1234f Total of Stamps Posted at Paris. The Stamps Cat £468 alone. Interesting High Value Item (1)	450	60	*	1854/57 QV 1d Red Brown P14 Die 1 SG 22 Good Mint SG Cat £1200 (1) PHOTO-PLATE 1	500
46	C	1953 (21NO) Similar Registered Opened out Cover to 'The Commissioner, Snowy Mountains Hydro-Electric Authority, Cooma, NSW, Australia' with 1949 500f Air x 25 plus 5f Marianne, 6f Pair & 40f values = Total Face Value = 12,557f. Interesting High Value Posting from Paris. The Stamps Cat £225 alone (1)	250	61	C	1864 (JU18) Printed 'Via Marseilles' envelope to Calcutta, India with QV 1d Red & 9d Bistre Posted by London SW cancel. Backstamped Calcutta. SG Cat £1200 for the 9d value on cover. (1) PHOTO-PLATE 5	250
	<b>FRENCH ANTARCTIC TERRITORY</b>						
47	P	1963 10f Pintado Petrel SG 28 in a Delux Die Proof plus a Imperf Plate Proof Pair. Bird Thematic (2 Items)	200	62	U	1867/80 QV 2/- Brown SG 121 Used with a heavy cancel. Very Scarce. SG Cat £4250 (1) PHOTO-PLATE 1	750
48	P	2006 £4.90 25th Anniv Carbon Dioxide Measurements SG 569 Pair of Die Proofs (positive & negative) in black signed by the engraver. Fine & Scarce (2)	250	63	U	1867/83 QV 10/- Grey Green SG 128 Very Good to Fine Used. SG Cat £3000 (1) PHOTO-PLATE 1	1500
	<b>GAMBIA</b>						
49	U	1922 KGV Definitives Set SG 122/42 Fine Used Very Scarce Cat £600 (19) PHOTO-PLATE 1	600	64	C	1868 (JY1) Cover to Mrs AN Brown, The Archdeaconry, Tauranga, Auckland NZ with 6d SG 97 Plate 6 tied by LONDON Duples cancel. Endorsed 'Via Panama' Backstamp Tauranga AU 29 1868. (1)	150
	<b>GERMANY</b>						
50	C	1912 (28AP) Zeppelin Printed Postcard Posted at Hessen with On Board violet cachet at left. Fine & Scarce (1)	450	65	*	1870 QV 1/2d Rose Red SG 48 Plates 1, 3, 4, 5, 6, 8, 10, 11, 12, 13, 14, 15, 19 & 20 Good Mint. SG Cat £2980 (14)	1000
51	C	1916/17 Stampless Prisoner of War Postcards from a German Camp to England - someone who had sent POW parcels. Condition mixed. Various cachets (16)	200	66	*	1883/84 QV 10/- Pale Ultramarine SG 183a Mint with light perf toning and light gum creases. Scarce SG Cat £2500 (1) PHOTO-PLATE 1	500
	<b>GILBERT &amp; ELLICE ISLANDS</b>						
52	C	1908 (NO17) Fijian Picture Postcard with NZ 1/2d Green Mt Cook tied by FANNING ISLAND cancel to Texas, USA. The card has light ageing at top. (1)	100	67	*	1902/10 KEVII 2/6 Dull Purple SG 262 Good Mint Cat £350 (1)	350
				68	*	1902/10 KEVII 2/6 Pale Dull Purple SG 261 Fine Mint SG Cat £350 (1) PHOTO-PLATE 1	350
				69	*	1902/10 KEVII 5/- Bright Carmine SG 263 Good Mint Cat £450 (1) PHOTO-PLATE 1	400
				70	*	1913 KGV Seahorse 2/6 Deep Sepia Brown SG 399 Mint with minor short perfs. SG Cat £400 (1) PHOTO-PLATE 1	200
				71	*	1929 £1 UPU Congress SG 438 Good Mint Cat £750 (1) PHOTO-PLATE 1	750
				72	C	1952 3x Printed 'Wengers Ltd, Ceramic Colour & Chemical Manufacturers, Etruria, Stoke-on-Trent England' Printed Parcel Post Cards addressed to Phillips & Impey Ltd, Auckland NZ - 1. KGVI 3d, 1/- & 5/- Festival of Britain values 2. KGVI 6d & 10/- Festival of Britain & 3. KGVI 1/-(2), 5/- & 10/- Festival of Britain values tied. Odd soiling. One card with a minor tear otherwise nice high values on card (3 Items)	150

LOT		NZ\$	LOT		NZ\$		
73	C	1963 Freedom from Hunger Airmail Handdrawn First day Cover to NZ (1)	50	94	*	1928 KGV Postage & Revenue Overprints Set SG 174/92 Good Mint Cat £200 (19) PHOTO-PLATE 1	200
74	C	1982/1988 Commemorative Sets in Harrison & Sons Ltd Cards - 1982 Youth Organisations, British Theatre, Christmas; 1983 Engineering Achievements, British Army, Christmas; 1987 Isaac Newton, Europa; 1988 Welsh Bible. (9 Items)	100	95	*	1930 KGV Definitives Set SG 193/209 Good Mint Cat £250 (17) PHOTO-PLATE 1	200
75	C	1999 Millennium Timekeeper Min Sheet on Printed Coin (£5) Large First Day Cover. Limited Edition. Fine Cover (1)	50	96	*	<b>NETHERLANDS</b> 1852 King William III Imperf Set SG 1/3 All Mint No Gum. Fine colours. SG Cat £2800 (3)	500
76	C	2003 Sir Edmund Hillary Extreme Endeavours Printed Mt Everest Cover Signed (1)	200	97	U	1898 10g Orange-red NVPH 80/SG 197 Fine Used Scarce. SG Cat £1000 (1) PHOTO-PLATE 1	500
77	*	Government Parcels 1887/90 QV 9d Dull purple & Blue SG 067 Good Mint Cat £425 (1)	250	98	*	<b>NEW GUINEA</b> 1925/27 Huts Definitive Set including 1x extra 6d value SG 125/36 Good Mint Cat £400 (14) PHOTO-PLATE 1	300
78	*	Government Parcels 1902 KEVII 1/- Dull Green & Carmine SG 078 Good Mint. Very Scarce. SG Cat £1350 (1) PHOTO-PLATE 1	1000	99	*	1932/34 Birds of Paradise (Redrawn) Set SG 177/189 Good Mint Cat £300 (15) PHOTO-PLATE 1	250
79	U	PERFINS 1930's on pieces all Perfined 'NZ' with 1. KGV 1/2d Green Strip of 3 & 1d Red values 2. KGV 2 1/2d Blue Pair plus 3 & 4 2 1/2d singles values all tied on pieces. (8 stamps)	50	100	U	1935 £2 Bulolo Air SG 204 Very Good Used Cat £140 (1) PHOTO-PLATE 1	125
		<b>HONG KONG</b>		101	C	(German) 1898 (1JY) 10pf Printed Coloured Postcard Posted at Stefhansort to Berlin, Germany. Has Bestellt 19/8/98 cancel at left. Fine (1) PHOTO-PLATE 4	200
80	U	1903 KEVII Set (no 50c) SG 62/70 & 72/76 Very Good to Fine Used. Very Scarce. SG Cat £1800 (14) PHOTO-PLATE 1	1000	102	U	(German) 1901 Yachts Set Mi 7/19 Very Good to Fine Used Cat 1000 Euros (13) PHOTO-PLATE 1	750
81	**	1970 Chinese New Year. Year of the Dog SG 261/62 Plate 1A & Imprint Blocks of 4 Unhinged. SG Cat £344 for the stamps alone (16)	250	103	U	Queensland QV 2d Blue tied on piece by full 'BNG' Obliterator cancel (1) PHOTO-PLATE 1	100
82	C	1990 \$10 World Stamp Exhibition Min Sheet SG MS646 on Printed First Day Cover. SG Cat £80 for the Min Sheet Scarce 91)	100			<b>NEW HEBRIDES</b>	
		<b>HUNGARY</b>		104	C	1940 (28FE) Printed OCS/Post Office Cover with 10c Orange Definitive tied by Nouvelles Hebrides/Port Vila cancel to Nukualofa, TONGA. Backstamp Nukualofa/Tonga 23 AP 40. (1) PHOTO-PLATE 5	100
83	C	1931 (28MR) LZ127 Printed Zeppelin Cacheted Cover with 20fl & 2p Zeppelin Posted at Budapest. (1)	150	105	C	1962 (8FE) Inwards Postage Due Cover from Sydney, Australia with 'T/6d' Postage Due cachet. Has 1957 20c Postage Due SG FD109 tied by SANTO cancel. Scarce (1) PHOTO-PLATE 4	200
		<b>INDIA</b>				<b>NEW SOUTH WALES</b>	
84	C	1949/52 Archeological Definitives Set SG 309/24 tied on Printed First day Cover. Minor perf staining. SG Cat £50 for the set alone (1)	50	106	P	1867 QV 10d Lilac Die Proof 92x60mm on thick card. Fine & Scarce (1) PHOTO-PLATE 4	250
		<b>JAPAN</b>		107	P	1871 QV 6d Green Die Proof 92x60mm on thick card. Fine & Scarce (1) PHOTO-PLATE 5	250
85	C	1937 (10MY) 2y General Nogi Definitive SG 392b tied on Karl Lewis Colour Hand Painted First Day Cover with a Block of 10 Posted at Yokohama to NZ (1) PHOTO-PLATE 4	100			<b>NIUE</b>	
86	C	1945 (25OC) Cover to NZ with various Japanese Stamps Posted at Yokohama. (Japanese Surrender period). The cover has light staining (1)	50	108	*	1902 1d Universal SG 1 Good Mint Cat £350 (1) PHOTO-PLATE 2	300
87	*	1949 5y Postal Service Min Sheet SG MS515 Mint No Gum as issued. SG Cat £65 (1)	50	109	C	1950 (3JY) 1/2d Pair SG 113 tied on Purdon Colour Handdrawn First Day Cover. Fine & Scarce (1) PHOTO-PLATE 4	150
		<b>KENYA UGANDA &amp; TANGANYIKA</b>				<b>NORFOLK ISLAND</b>	
88	*	1890 QV 4a on 5d British East Africa Company Overprint SG 3 Good Mint Scarce SG Cat £650 (1) PHOTO-PLATE 1	500	110	C	1943 (27JA) National Patriotic Fund Board Stampless Cover to NZ with a fair NZEF/Post Office N cancel. The cover has slight faults on the back (1) PHOTO-PLATE 5	200
		<b>KOREA</b>		111	C	1955 (27SP) LATE FEE cacheted Cover with various Ball Bay (5) values & '53 3 1/2d tied. Has light perf staining (1) PHOTO-PLATE 4	150
89	U	(Japanese Occupation) 1900 5r, 1s, 2s, 3s, 4s, 5s, 10s, 15s, 20s, 25s, 50s & 1y SG 1,2,44/7,9/14 Fine Used SG Cat £265 (12) PHOTO-PLATE 1	250			<b>PAPUA</b>	
		<b>MALAYA (JOHORE)</b>		112	U	1932/40 £1 Delta House SG 145 Fine Used SG Cat £180 (1) PHOTO-PLATE 2	150
90	C	1911 (14 MR) Johore Picture Postcard with 4c Definitive tied by BAHRU/JOHORE cancel to Germany with Singapore transit cancel (1) PHOTO-PLATE 4	100	113	U	1932/40 10/- Violet SG 144 Fine Used Cat £120 (1) PHOTO-PLATE 2	100
		<b>MALTA</b>				<b>PAPUA &amp; NEW GUINEA</b>	
91	*	1904/14 KEVII Definitives Set SG 45/63 Good Mint Cat £325 (17) PHOTO-PLATE 1	250	114	U	Postage Due 1960 6d on 7 1/2d Blue SG D1 Fine Used Scarce Cat £450 (1) PHOTO-PLATE 2	450
92	*	1922/26 KGV £1 Black & Bright Carmine SG 140 Unhinged Cat £120 (1)	150			<b>PITCAIRN ISLAND</b>	
93	*	1922/26 KGV £1 Black & Carmine-Red SG 139 Good Mint Cat £150 (1) PHOTO-PLATE 1	150	115	C	1932 (20AU) Cover with Australian KGV 2d on 1 1/2d Overprint tied by light NZ Postal Agency cancel to England (1)	300
				116	C	1938 (9JL) VR6A Radio QSL Card (Operator Andrew C Young) Has NZ '35 1d Pictorial (Kiw) tied by NZ Postal Agency cancel to NZ. Fine Item (1)	200

LOT		NZ\$
117	C 1940 Cacheted 150 Years Anniversary Cover to NZ with NZ '35 2d Pictorial tied by boxed 'Packet Boat' handstamp. The cover has a minor tear at top. Backstamped Auckland 26 FE 40. (1) PHOTO-PLATE 5	150
118	C 1971 10c Royal Visit Printed First Day Cover unaddressed. Scarce (1)	200
<b>PORTUGAL</b>		
119	C 1931 (29JA) Riesenflugzeug Do.X Flying Boat Postcard First Flight from Lisbon to New York with various cachets at left. Fine & Scarce (1)	400
<b>QUEENSLAND</b>		
120	* 1880 QV 10/- Bistre-Brown SG 126 Mint with light perf staining. Cat £950 (1) PHOTO-PLATE 2	300
121	P REVENUE 1938/41 Development Imperf Proof Set 1d to £1 Fine & Scarce (11) PHOTO-PLATE 2	250
<b>RHODESIA</b>		
122	U REVENUE 1907 £20 Yellow-Brown Barfoot 23 Used & Perfined. Cat £175 (1) PHOTO-PLATE 2	250
<b>SAMOA</b>		
123	U 1914 GRI 3/- on 3m Violet-Black SG 113 Fine Used. Scarce Cat £1200 (1) PHOTO-FRONT COVER	1000
124	U 1914 GRI 5/- on 5m SG 114 Fine Used Scarce Cat £1500 (1) PHOTO-PLATE 2	1250
<b>SAMOA (GERMAN)</b>		
125	U 1901 Yachets Set to 5m Mi 7/19 Very Good to Fine Used Cat 1000 Euros (13) PHOTO-PLATE 2	750
<b>SOUTH AUSTRALIA</b>		
126	U 1886/96 QV 2'6,5'-.10'-.15'-.£1 SG 195a/199a Fine Used Cat £520 (5) PHOTO-PLATE 2	400
<b>SOUTHERN RHODESIA</b>		
127	P 1940 3d Rhodes Imperf Plate Proof Pair on Waterlow & Sons Ltd/Printers File Example Card (2)	100
<b>ST HELENA</b>		
128	* 1922/37 KGV £1 Grey & Purple/Red SG 96 Good Mint Cat £450 (1) PHOTO-PLATE 2	400
<b>SWITZERLAND</b>		
129	C 1934 (2JY) Zeppelin Flight Cover to Bern with green Zeppelin cachet. Various Airmail stamps (1)	200
<b>TASMANIA</b>		
130	U 1853 QV 4d Bright Red Orange SG 5 Used with 4 Margins with light ageing. Cat £1000 (1) PHOTO-PLATE 2	250
<b>TONGA</b>		
131	C 1922 (16MY) 1d Printed Postcard (Nukualofa from Wharf) Posted at Nukualofa to Germany. H&G #2 Fine & Scarce (1) PHOTO-PLATE 5	100
132	C 1930 (21OC) Cover with 1/2d Blue Definitive tied by TIN CAN MAIL/NIUAFOOU cachet. Has US Naval Eclipse Expedition/Niuafouu Tonga cachet on the back. Minor ageing (1)	200
133	C 1947 (OC6) Finau Cover with 'Final and complete evacuation of Niuafouu by the Tonga Government yacht 'Hifofua' took place on October 9 1947' green cachet. Has 2d Definitive tied in manuscript by the Purser (1)	100
<b>UNITED STATES OF AMERICA</b>		
134	U 1847 10c George Washington Scott #2 Used with 3 Close Margins. Scott Cat US\$925 (1) PHOTO-PLATE 2	500
135	U 1870/71 90c Perry Scott #155 Good Used Cat US\$350 (1) PHOTO-PLATE 2	250
136	** 1893 \$1 Columbus Scott #241 Unhinged Cat US\$3750 (1) PHOTO-PLATE 2	2000
137	U 1893 \$2 Columbus Scott #242 Good Used Cat US\$600 (1) PHOTO-PLATE 2	500
138	U 1893 \$5 Columbus Scott #245 Very Good to Fine Used Cat US\$1200 (1) PHOTO-FRONT COVER	1000

LOT		NZ\$
139	* 1918 Airmail Set Scott C1/3 Mint No Gum Cat US\$195 (3)	75
140	C 1919 Aviator Paul Studensky receiving US Aerial Mail at Galveston, Texas Picture Postcard with US 2c tied by Galveston, Texas/US Aerial Mail/March 17 1919 to England. Fine Airmail Item (1) PHOTO-PLATE 5	75
141	** 1926 International Philatelic Exhibition Min Sheet Scott #630 Unhinged Cat US\$600 (1)	400
142	** 1930 Graf Zeppelin Set Scott C13/15 Fine Unhinged. Very Scarce. Cat US\$1900 (3) PHOTO-FRONT COVER	1500
143	C 1941 (SP5) Airmail/Express Special Delivery labelled endorsed 'By Airmail to San Francisco/ By Clipper from Frisco to Auckland NZ' with US Airs 6c,10c,15c,20c; Presidents 50c,\$1 Pair & 10c Special Delivery Pair. The envelope contained Photos. (1)	100
144	C 1944 (11JL) US 6c Airmail Cover sent by an Army Nursing Sister serving on the USS Comfort to a Major at APO 929 Port Moresby, then forwarded to APO 925 Brisbane. The ship was a Hospital Ship operating out of Hollandia, New Guinea at the time. (1)	100
145	C 1968 (29AUG) US Armed Forces/Vietnam Printed Cover with US 25c Definitive tied by APO 96238 cancel to NZ. Addressed to the NZ Insurance Company (1)	50
146	* Parcel Post 1913 Set Scott Q1/12 Good Mint Scarce Cat US\$956 (12) PHOTO-PLATE 2	500
147	* PONY EXPRESS 1862/64 25c Red Wells Fargo & Co Imperf label Scott 143L9 Mint No Gum (1)	25
148	C (SAMOA) 1904 (MY3) Printed 'Oceanic Steamship Company SS Sonoma' Cover with US 5c Lincoln tied by PAGO PAGO/SAMOA cancel to NZ. Backstamped Trav PO Invercargill. (1) PHOTO-PLATE 5	200
<b>VANUATU</b>		
149	P 1989 Shrimps Imperf Plate Proof single stuck in a House of Questa Printed Folder. (1)	200
<b>WESTERN AUSTRALIA</b>		
150	** REVENUE 1907 Supreme Court Fees £25,£50,£100 Red Barfoot 45/47 Unhinged (3) PHOTO-PLATE 2	300

## NEW ZEALAND STAMPS

### 1855-62 IMPERF FULL FACE QUEENS

151	* 1/- Deep Yellow Green SG 45/CP A6d(4) with 3 Margins Mint No Gum. Good Colour SG Cat £3000/CP Cat \$4000 (1) PHOTO-PLATE 2	1500
152	U 1/- Green No Watermark SG 6/CP A6b Fine Used with 4 Margins postmarks with Obliterator '7' (Wellington) cancel. Fine stamp SG Cat £4000/CP Cat \$7500 (1) PHOTO-FRONT COVER	2500
153	U 1d to 1/- Imperf Set - 1d Red, 1d Orange, 2d Blue, 3d Brown Lilac, 6d Red Brown, 6d Black Brown, 6d Yellow Brown. Fine Used Mostly 4 Margins. ACS 1/6 Cat \$3000 (8) PHOTO-PLATE 2	2000
154	* 2d Blue Large Star Watermark SG 36/CP A2d(3) with 4 Margins Mint No Gum. Minor ageing. SG Cat £1000/CP Cat \$2000 (1) PHOTO-PLATE 2	750
155	U 6d Red Brown NZ Watermark SG 99/CP A5f with 4 Close to Good Margins Very Good Used SG Cat £900/CP Cat \$2000 (1) PHOTO-PLATE 2	750
<b>1862-73 FULL FACE QUEEN CANCELS</b>		
156	U 1/- Green SG 125 with Manuscript 'K' (Kowhai) Fine & Scarce (1) PHOTO-PLATE 2	250
157	U 1d Carmine-Vermilion Imperf SG 35 cancelled by 'Province-Of-Auckland/2' SP 26 64 with 3 Margins (1) PHOTO-PLATE 2	200

LOT		NZ\$	LOT		NZ\$		
	<b>1862-73 PERF FULL FACE QUEENS</b>			<b>1900 PICTORIALS</b>			
158	U	1/- Green Stockcard of 20 examples Good to Very Good Used. ACS Cat \$3500 (20)	1000	184	U	6d Red Kiwi Upright Watermark SG 312ab/CP E14f Fine Used with odd bluntysh perfs. SG Cat £2500/CP Cat \$4000 (1) PHOTO-PLATE 2	1500
159	U	1d Orange Stockcard of 10 examples Good to Very Good Used ACS Cat \$600 (10)	200		<b>1900 PICTORIAL OFFICIALS</b>		
160	U	1d Red SG 110 Horizontal Pair cancelled by Obliterator '5' (Timaru) cancels. (2)	100	185	**	6d Red Large Kiwi SG 064 Unhinged ACS Cat \$1800 (1) PHOTO-PLATE 2	900
161	U	1d Red Stockcard of 10 examples Good to Very Good Used. ACS Cat \$800 (10)	250		<b>1901 1D UNIVERSAL</b>		
162	U	2d Blue Stockcard of 10 examples Good to Very Good Used. ACS Cat \$800 (20)	200	186	C	London Print SG 277 on Plain First Day Cover Posted at Glenary ACS Cat \$300 (1)	150
163	*	2d Orange Large Star Watermark SG 133 Overprinted with 'Specimen' 15x2mm in violet. Mint No Gum (1) PHOTO-PLATE 2	200		<b>1906 CHRISTCHURCH EXHIBITION</b>		
164	U	2d Orange Stockcard of 20 examples Good to Very Good Used ACS Cat \$1000 (20)	250	187	**	1/2d Canoe, 1d Carving, 3d Cook's Landing SG 370/372 in Right-hand Selvedge Blocks of 4 lightly hinged at top, 2x Unhinged. ACS Cat \$1750 (12)	875
165	U	3d Brown Lilac Large Star Watermark SG 116/CP A3d Very Good Used. Scarce SG Cat £750/CP Cat \$2750 (1) PHOTO-PLATE 2	900	188	**	1/2d to 6d Set SG 370/73 Unhinged ACS Cat \$1500 (4) PHOTO-PLATE 2	900
166	U	3d Lilac Stockcard of 20 examples, many shades Mostly Good to Very Good Used. ACS Cat \$1200 (20)	400	189	*	1d Claret SG 371a/CP S2b Good Mint with fine colour. ACS Cat \$30,000 (1) PHOTO-FRONT COVER	20000
167	U	4d Yellow SG 120 Stockcard of 20 examples, good range of shades Mostly Good to Very Good Used. ACS Cat \$5000 (20)	1000		<b>1909 KING EDWARD VII</b>		
168	U	6d Blue Stockcard of 20 examples Good to Very Good Used ACS Cat \$2400 (20)	600	190	*	1/2d to 1/- Simplified Set ACS 76/85 Good Mint ACS Cat \$440 (10)	250
169	U	6d Brown to Red-Brown Stockcard of 30 examples, shades Mostly Good to Very Good Used. ACS Cat \$1500 (30)	450		<b>1913 AUCKLAND EXHIBITION</b>		
	<b>1874 FIRST SIDEFACES</b>			191	**	1/2d to 6d Set SG 412/415 Fine Unhinged ACS Cat \$2000 (4) PHOTO-PLATE 2	1250
170	*	1d Carmine, 2d Blue & 6d Brown All Overprinted 'Specimen' - the 1d & 6d Mint No Gum, the 2d Mint with minor perf tone at top. (3) PHOTO-PLATE 2	300		<b>1915 KGV RECESS OFFICIALS</b>		
171	*	1d to 5/- Simplified Set ACS 19/26 Good Mint ACS Cat \$3750 (8)	1875	192	*	3d to 1/- Simplified Set ACS #111/116 Good Mint ACS Cat \$430 (6)	220
172	U	1d to 5/- Simplified Set ACS 19/26 Very Good Used ACS Cat \$1800 (8) PHOTO-PLATE 2	900	193	**	8d Red Brown SG 0103 Unhinged ACS Cat \$400 (1) PHOTO-PLATE 2	200
173	U	5/- Grey SG 186 Fiscally Used (1)	100		<b>1915 KGV SURFACE</b>		
174	U	5/- Grey SG 186 Very Good to Fine Used ACS Cat \$800 (1) PHOTO-PLATE 2	400	194	U	1d Field Marshal SG 468ew/CP K15b(w) Reversed Watermark. Very Scarce. CP Cat \$2100 (1)	1250
175	U	6d Blue P10x12 1/2 Mixed Perfs CP C5b(y) Very Good Used Very scarce. CP Cat \$2500 (1) PHOTO-PLATE 2	1000		<b>1915 KGV SURFACE OFFICIALS</b>		
176	U	Presentation Set 1d to 5/- all with fine circular cancels. Fine & Scarce lot (7)	1000	195	**	2d Yellow P14 Cowan KO18e Block of 4 with Grossly Misplaced Perforations Unhinged with minor gum ageing. Has Imperf Margin at bottom and on the right-hand side. Fine Error Block (4) PHOTO-PLATE 2	400
177	*	SPECIMEN 14.5mm x 2.25mm Set 1d to 5/- Mint. The 1/- has a missing bottom left corner otherwise Very Scarce (1)	1000		<b>1920 VICTORY</b>		
	<b>1882 SECOND SIDEFACES</b>			196	**	1/2d to 1/- Set includes the 2d Overprint Unhinged ACS Cat \$400 (7)	250
178	U	6d Brown P12x11 1/2 SG 191/CP D8a postmarked AUCKLAND 7 NO 82. Early Date (1)	50		<b>1925 DUNEDIN EXHIBITION</b>		
	<b>1893 ADVERTISEMENT STAMPS</b>			197	**	1/2d to 4d Set Fine Unhinged ACS Cat \$160 (3)	100
179	U	1d Rose 2nd Setting in Blue CP DA2j(6) Use Kaitangata Coal, Cheapest & Cleanest. CP Cat \$120 (1)	75	198	U	4d Mauve SG 465 Fine Used ACS Cat \$150 (1)	75
180	U	1d Rose 3rd Setting P10 in either Red/Red-Brown/Brown Purple Complete Reconstructed 4 Panes of 60 all set out on 4 Album Pages. A few faults. Scarce lot. CP Cat \$2880 (240)	1000	199	C	Dunedin Exhibition Set on Registered Plain First Day Cover. ACS Cat \$400 (1)	250
181	U	1d Rose CP DA2j(6) Blue Advert - For Asthma Use Bonnington's Irish Moss. CP Cat \$120 (1) PHOTO-PLATE 2	75	200	C	Set on First Day Cover cancelled by Dunedin Exhibition machine cancel. The cover has a light horizontal crease. ACS Cat \$400 (1)	200
	<b>1898 PICTORIALS</b>				<b>1926 ADMIRALS</b>		
182	U	1/2d to 5/- Simplified Set ACS 37/50 Very Good Used ACS Cat \$900 (14)	500	201	*	1d to 3/- Simplified Set ACS 141/143 Good Mint ACS Cat \$400 (3)	200
	<b>1898 PICTORIAL OFFICIALS</b>			202	U	3/- Mauve Jones Paper SG 470 Fine Used ACS Cat \$300 (1) PHOTO-PLATE 2	150
183	U	3d to 5/- Simplified Set ACS 51/54 Nice Used ACS Cat \$750 (4)	400		<b>1931-4 AIRMAILS</b>		
				203	*	1931/34 Set ACS 146/150 Good Mint ACS Cat \$235 (5)	120
				204	C	1935 Airmail Set on Plain First Day Cover. Minor edge/perf staining. ACS Cat \$550 (1)	300
				205	**	3d Brown P14x15 SG 548a/CP V1b Unhinged CP Cat \$375 (1) PHOTO-PLATE 2	200
					<b>1935 PICTORIALS</b>		
				206	P	1/2d to 1/- Black 'Collins' Essays of mostly un-adopted designs on thick card. Fine & Very Scarce (12)	1500



LOT		NZ\$	LOT		NZ\$
207	** 3/- Mt Egmont P14-13x13 1/2 CP L14a Plate 1 Corner Block of 4 Unhinged with minor ageing. Very Scarce CP Cat \$1750 (4)	750	228	** 1958 2d Stars Error SG 763b Block of 4 Unhinged ACS Cat \$1200 (4)	600
208	** 5d Swordfish CP L8f(5)/CP 584ca Cobalt Blue Rare printing with RPSNZ 2021 Certificate. CP Cat \$2250 (1) PHOTO-FRONT COVER	1500	229	** 1958 2d Stars Error SG 763b Fine Unhinged ACS Cat \$300 (1)	150
209	** 5d Swordfish CP L8f(z) Coil '13' Pair Unhinged CP Cat \$6000 (2) PHOTO-PLATE 3	4000	230	C 1958 6d Kingsford Smith SG 766 Handdrawn 'Smithy' Cover Fine Item (1) PHOTO-PLATE 5	100
210	* 1/2d to 2/- Simplified Set ACS 172/184 Good Mint ACS Cat \$450 (13)	225		<b>1960-6 PICTORIALS</b>	
211	C Handdrawn Long Cover with '37 Coronation Set, '36 1d Anzac, '35 1d Map, '36 1/2d C of C, '35 1/2d Pictorial Pair, '35 Official 1d & 1 1/2d Official Blocks of 4 Posted at Wellington East. The stamps have slight perf staining. (1)	75	231	** 1/2d to £1 Simplified Set ACS 342/364 Unhinged Mint ACS Cat \$200 (23)	200
	<b>1937 CORONATION</b>		232	** 2d Kaka Beak SG 783a Transitional Vertical Strip of 3 - the first stamp normal, the 2nd stamp with partial missing black and the bottom stamp Missing Black Unhinged. Fine Strip CP Cat \$1200 for the error stamp (3)	750
212	C 1941 (1MY) 1d/1/2d Green Provisional & 2d/1 1/2 Brown SG 628/29 - the First Day Cover for the 1d value. ACS Cat \$275 (1)	200	233	** 3/- Sepia SG 798 Plate 5 Block of 6 Unhinged CP Cat \$350 (6)	175
213	C 1944 KGVI 1 1/2d Red Illustrated First Day Covers Small Collection noted D44.1C rated 6, D44.1E rated 7, D44.1DA rated 6, D44.1T rated 7. Also Jones D41.1AA, D41.1AB, D41.2A, D41.3A, D41.4AA, D41.4AB. The latter all 1941 Covers. Nice lot (19)	500	234	** 4d Puarangi Chalky Paper SG 786d/CP O6b Fine Unhinged CP Cat \$2000 (1) PHOTO-PLATE 3	1250
214	P 1949 3d HMS Vanguard Photographic Proof (1) PHOTO-PLATE 5	250	235	** 5d Mountain Daisy SG 787a Top Selvedge Vertical Strip of 3 with the top stamp Missing Yellow, the next two stamps with yellow colour shifts Unhinged. Fine Error Strip. CP Cat \$1000 for the error stamp (3)	750
215	C 1949 Proposed Royal Visit Illustrated First Day Blank Cover Jones C49.1A Rated 9 Very Scarce (1)	650		<b>1967-9 PICTORIALS</b>	
216	C 1950 Arms 1 1/2d Arms 6x First Day Covers; 1952 3d/1d Green Provisional 3x First Day Covers; 1953 1d/1/2d Brown Provisional 3x First Day Covers (12)	350	236	C 1971 (1AP) Uprated QE 18c Registered Cover with \$2 Pink Geyser added. Last day of Issue. (1)	75
217	P 1952 3d Gothic Perforated Plate Proof single with minor ageing. Unadopted Proof for the cancelled Royal Visit. Fine & Unusual (1) PHOTO-PLATE 3	500		<b>1970 DEFINITIVES</b>	
218	P 1952 Perforated Unadopted Essay Royal Family in Purple. minor ageing. Fine & Unusual Proof. The Royal Visit was cancelled (1) PHOTO-PLATE 3	500	237	** 1/2c Butterfly SG 914 Left-hand Selvedge Block of 16 showing the top 8 stamps only half sized and perfed. Also with vertical double perforations. Fine & Unusual Perforation Error Block. (16) PHOTO-BACK COVER	2000
	<b>1938 KGVI OFFICIALS</b>		238	** 1c Red Admiral Butterfly No Watermark CP P2c(t) Bottom Selvedge Block of 6 with a Major Black Colour Shift downwards Unhinged. CP Cat \$1500 (6) PHOTO-BACK COVER	750
219	C 1 1/2d Chocolate SG 0138 Pair on OHMS First Day Cover. Fine condition. ACS Cat \$300 (1) PHOTO-PLATE 5	200	239	** 1c Red Admiral Butterfly No Watermark CP P2c(x) Red Colour Omitted Unhinged CP Cat \$600 (1) PHOTO-PLATE 3	300
220	** 1/2d to 2/- Simplified Set ACS 212/225 Unhinged Mint ACS Cat \$400 (14)	200	240	** 4c Puriri Moth No Watermark Top Left Corner Block of 12 with a Striking Major Brown & Blue Colour Shifts resulted from a pre-printing Paper Creasing. Fine Error Block Unhinged (12) PHOTO-BACK COVER	1000
221	C 1d Green SG 0137 Block of 4 tied on OHMS First Day Cover. ACS Cat \$200 (1)	150	241	** 6c Seahorse No Watermark CP P8a(y) Plate 1B1B1B1B1B with Complete Offset of Colours Unhinged. Rare Block CP Cat \$9500 (10) PHOTO-BACK COVER	3000
	<b>1940 CENTENNIAL</b>		242	** 7c Fish No Watermark CP P9a(y) Corner Plate Block of 18 with 4x Full & 6x Partial Colour Offsets Unhinged. Rare Block (18)	2000
222	** OFFICIALS 1/2d to 8d Joined 'FF's' Set in Pairs & 2 1/2d in Strip of 3 Unhinged with odd perf tone SG 0141a/0149a - CP SO26a(z)/SO35b(z) SG Cat £545/CP Cat \$840 (17)	250	243	** 7c Fish No Watermark CP P9b(z) Left-hand Selvedge Block of 10 with Double Perforations both Vertically & Horizontally on the first 2 stamps Unhinged. CP Cat \$1050 (10)	500
223	C OFFICIALS 1940 Set on OHMS Plain First Day Cover. Very Scarce. Has minor perf staining. ACS Cat \$2250 (1)	1000	244	** 8c John Dory No Watermark CP P11b(x) Blue-Green Colour Omitted Fine Unhinged CP Cat \$600 (1)	300
	<b>1948 OTAGO CENTENNIAL</b>			<b>1972-5 COMMEMORATIVES</b>	
224	C 1948 (18AU) Handdrawn Herbert Duke Cover with 1d & 2d Otago Centennial pairs Posted at Silverdale. Backstamped Lakema/NSW (1) PHOTO-PLATE 5	50	245	P 1972 10c Alpine Plants Eileen Mayo Signed Pencil & Watercolour Sketch 105cm x 19cm. Fine Artist Drawing by the Designer for this stamp issue (1)	1000
	<b>1953-9 QUEEN ELIZABETH</b>			<b>1975-9 PICTORIALS</b>	
225	** 1/2d to 10/- Simplified Set ACS 283/298 Unhinged Mint ACS Cat \$270 (16)	150	246	** 1975 4c Rose Top Selvedge Corner Block of 10 with Double Perforations Error CP PA4a(x) affecting the first 2 stamps of each row. Fine Perforation Error CP Cat \$1000 (10) PHOTO-PLATE 5	500
226	C 1953 3d Coronation Illustrated First Day Cover Jones C53.1WA Three Arrows Cover Scarce (1)	50	247	** 1975 5c Rose in a Bottom Plate 1A1A1A1A1A Block of 30 showing a Major Light Green Smudge on the 2nd row of the block Unhinged (30)	250
227	C 1955 (1DE) Large Figures 1 1/2d Brown SG 746 tied on Plain First day Cover. ACS Cat \$200 (1)	150			

LOT		NZ\$	LOT		NZ\$	
248	**	1975 8c Rose in a Top Left-Corner Block of 20 with a Striking Diagonal Major Paper Crease affecting stamps on the top 4 rows Unhinged. Fine Error Block (20)	950	270	C 1957 Trans Antarctic Expedition Printed First Day Cover Registered and signed by members of the expedition including E P Hillary. Slight edge fault on the left and minor ageing. Very Scarce (1) PHOTO-PLATE 5	500
249	**	1977 10c Queen CP PA10a Imperf Selvedge Pair Unhinged CP Cat \$750 (2) PHOTO-PLATE 3	500		<b>CHRISTMAS</b>	
250	U	1977 8c/4c Postafix CP P32a(z) Missing Dark Green Veins Fine Used CP Cat \$400 (1)	200	271	** 1960 2d Nativity CP SC1a(x) Top Selvedge Block of 6 with Double Perforations Vertically on both stamps and Horizontally on the top stamps above the Year & Value. Fine Unhinged (6)	500
251	**	1977 Silver Jubilee Min Sheet SG MS1137a/CP SM220-4(z) Imperforate Unhinged CP Cat \$3500 (1)	1750	272	** 1970 10c Church Tower SG 945 in a Plate Imperf Proof Block of 4 Unhinged (4)	300
252	**	1978 20c Paua Shell CP PA15a(Zc) Top Selvedge Vertical Pair with the top stamp Imperf at top and on both sides Unhinged. CP Cat \$750 (3)	500	273	** 1970 3c Window SG 944a/CP SC11b(z) Missing Olive Colour Unhinged CP Cat \$500 (1) PHOTO-PLATE 3	250
253	**	1979 10c Queen CP PA10b Missing Blue (Frame) Colour Unhinged CP Cat \$1500 (1) PHOTO-FRONT COVER	1000	274	** 1984 45c The Joy of Christmas CP SC25c Left-hand Fournier Plate Proof Block of 25 with the colour markings in the selvedge. The proof in issued colour. Fine Proof Block (25)	500
254	**	1979 14c/10c Queen Plate 3B2B2B2B2B Block of 10 CP PA31a(v) with Double Surcharge Overprints Unhinged. CP Cat \$3500 (10)	1000		<b>CINDERELLAS</b>	
255	**	1979 14c/10c Queen SG 1202b/CP PA31a(x) Surcharge Inverted Unhinged CP Cat \$1000 (1) PHOTO-PLATE 3	500	275	* 1906 Advertise in the Weekly Press label Heslop E11 Mint No Gum (1) PHOTO-PLATE 3	150
256	**	1979 4c/8c Rose CP PA30a(v) Plate 2B2B2B2B2B Block of 15 with Missing Surcharge Errors on the first 2 stamps of the bottom row Unhinged. Fine Error Block. CP Cat \$2000 (15)	1000	276	** 1914/18 WW1 Delandre 11th North Auckland Mounted Rifles Heslop OS7 Unhinged Cat \$500 (1) PHOTO-PLATE 3	250
257	**	1979 4c/8c Rose CP PA30a(v) Red, Green & Black Offsets complete on 2 stamps and partial on 2 more in a Corner Value Block Unhinged. CP Cat \$2500 (15)	1250	277	* 1915 Tokomaru Bay NZ Wounded Soldier's Fund 1/2d War Seal Heslop J30 Mint No Gum. Cat \$500 (1)	250
		<b>1980-89</b>		278	* 1915 Visit New Zealand NZ Railways 6x different labels - Sunset Cathedral Peaks, Mitre Peak, Lake Wakatipu, Drop Scene Wanganui River, Lake Ada, Looking Down Milford Sound. Also 'Some Prize Winners, Christchurch Show' label untied on the back of a cover. (6 labels & 1x Cover)	200
258	**	1980 14c Queen SG 1210ab/CP SP260-262(z) Strip of 3 with Missing Black Colour Unhinged. CP Cat \$1000 (3) PHOTO-PLATE 3	500	279	* 1917 1d Mt Eden School Soldier's Memorial Appeal Heslop J40 label with light ageing. Cat \$1250 (1) PHOTO-PLATE 3	300
259	**	1982 1c Mineral CP PB1b(z) Top Corner Value Block of 4 with Imperforate at Top Error unhinged CP Cat \$750 (4) PHOTO-BACK COVER	400	280	* 1917 National Patriotic Apple Show Dunedin Heslop J39 Mint No Gum Cat \$600 (1) PHOTO-BACK COVER	300
		<b>1990-99</b>		281	* 1930's Home Gifts Maori Importers Ltd 1/2 Black/Green & 1 Pink/Black labels Mint (2)	100
260	**	1990's Trial Orchid Self Adhesive Unhinged (1) PHOTO-PLATE 3	200	282	* 1935 See Scenic Southland label showing a Map of part of the South Island Heslop D13 Mint. Cat \$250 (1)	150
261	**	1991 Chatham Islands Discovery Bicentenary Pair SG 1585/1586 in Imperf Plate Proofs Blocks of 4 Unhinged (8)	500	283	* 1940's Oceania Exchange Heslop E102 in a Green Sheetlet showing Sun on Globe Mint No Gum. Cat \$1200 (8) PHOTO-PLATE 5	500
262	**	1996 \$3 Butterfly CP PC40b(z) Missing Grey & Green Colours Unhinged CP Cat \$1500 (1) PHOTO-PLATE 3	750	284	* 1966 It's Hareamai Year Heslop D60 Complete Sheet of 56 with faults on 2 stamps. Mint No Gum Cat \$560 (56)	250
		<b>2000 ONWARDS</b>			<b>EXPRESS DELIVERY</b>	
263	**	2003 \$1.50 Lord of the Rings - Gandalf the White stamp with a Major perforation Error Unhinged (1) PHOTO-FRONT COVER	750	285	C 1939 (16AU) 6d Car & 1d Silver Jubilee tied on Plain First Day Cover. The cover has minor perf staining. ACS Cat \$550 (1)	150
264	**	2009 Tibet 50c & \$1 Cals in Corner Imprint Blocks of 4 Unhinged (8)	100	286	C 1939 (16AU) 6d Car & KGVI 1d Red on Plain Cover with Small Blue 'First Day Cover' Printed at bottom left. ACS Cat \$550 (1)	275
265	C	2009 Tibet Cals 50c & \$1 on Printed First Day Cover (1)	100	287	** 1939 6d Car SG E6/CP U2a Complete Sheet of 60 Unhinged CP Cat \$600 (60)	200
266	**	2020 Kiwistamp Booklet CP W129b(l) 15 Kiwi Reprint Imperforate Unhinged (1)	1000		<b>HEALTH</b>	
		<b>ANTARCTICA</b>		288	U 1931 Red & Blue Boys Pair ACS H3/H4 Nice Used ACS Cat \$400 (2)	250
267	U	1908 King Edward VII Land SG A1 in a Block of 6 Used ACS Cat \$450 (6)	250	289	U 1931 Red & Blue Boys SG 546/47 in Blocks of 4 Used cancelled by Molesworth St 7 FE 32. Fine Blocks (8) PHOTO-BACK COVER	1250
268	C	1912 (3MR) Cover with 1d Victoria Land SG A3 tied by Brit Anantarctic Expd cancel to Lyttelton. The cover carried from the first relief voyage by the Terra Nova while Captain Scott was on his journey. Backstamped Lyttelton 3 AP 12. The cover has a light vertical crease (1) PHOTO-PLATE 5	750	290	** 1931 Red & Blue Boys SG 546/547 Fine Unhinged ACS Cat \$1050 (2) PHOTO-PLATE 3	650
269	C	1957 (11JA) Trans Antarctic Expedition Ross Dependency First Day Cover signed by E P Hillary. The cover has light staining (1)	150			

LOT		NZ\$
291	C 1932 1d Hygeia on Plain First Day Cover with minor perf staining. ACS Cat \$550 (1)	350
292	** 1933 1d Pathway SG 553 in a Selvedge Block of 48 Unhinged ACS Cat \$2880 (48)	750
293	C 1934 1d Crusader SG 555 First Day Cover with minor ageing. Very Scarce. ACS Cat \$4500 (1) PHOTO-PLATE 6	3000
294	C 1951 Yachting Pair SG 708/09 tied on 2x Maxicard Postcards. Fine Pair (2)	100
295	U 1964 Birds Miniature Sheet Pair SG MS823b cancelled by Pakuranga Health Camp First Day cancels. ACS Cat \$210 (2)	150
296	** 1996 40c Teddy Bear Error SG 2000a Fine Unhinged ACS Cat \$1500 (1) PHOTO-PLATE 3	750
297	** 2000 40c Teddy Bear Self Adhesive Error SG 2003a Unhinged ACS Cat \$2000 (1) PHOTO-PLATE 3	1000
	<b>LIFE INSURANCE</b>	
298	* 1891/98 1/- Rose SG L6 Mint Centred to top. Good colour ACS Cat \$1800 (1) PHOTO-PLATE 3	900
299	U 1905 Life Insurance Set Simplified All Very Good to Fine Used ACS Cat \$500 (11)	250
300	* 1905/06 2d Chestnut No VR SG L21 Good Mint Centred left. ACS Cat \$5500 (1) PHOTO-FRONT COVER	2000
301	C 1947 Original Set on Printed First Day Cover signed by J Berry the designer (1) PHOTO-PLATE 6	100
302	C 1947 Small Collection of Illustrated First Day Covers & leaflets noted Jones G47.1C rated 7 x2. Also Set on Cover with additional No VR 1/2d to 6d values added. Odd light tone (21 Covers & 4 Leaflets)	500
	<b>PERFINS</b>	
303	U Arms 10/- Carmine perfined 'RI/Co/Ld' Used Scarce (1) PHOTO-PLATE 3	100
304	U Arms 5/- perfined 'RI/Co.Ld' Used (1)	50
	<b>PIGEON POST</b>	
305	* 1899 1/- Special Post VP 2 Good Mint (1) PHOTO-PLATE 3	200
	<b>POSTAGE DUES</b>	
306	** 1899 10d Green/Red SG D8 Unhinged ACS Cat \$400 (1) PHOTO-PLATE 3	300
307	U 1899 Set Simplified Complete Very Good Used ACS Cat \$1600 (11) PHOTO-PLATE 3	800
308	C 1939 (16AU) Cover with untied 3d Postage Due Pair Posted at Wellington 16 AU 39 cancel to Napier. Has 'To Pay/2d/Deficient Postage' cachet with 2d Blue Postage Due tied by 'Postmen's Branch, Napier' cds. Boxed 'First Day of Issue' cachet at lower left. (1)	100
309	C 1951 (29SP) Postage Due Set on endorsed 'Last Day Cover' (1)	150
	<b>POSTAL FISCALS</b>	
310	U 1886 QV 2/- Blue P12 1/2 SG F22 Good Used with horizontal 'Double Perforations' at top. The stamp has partly trimmed perfs on the right hand side with minor perf staining. Unlisted variety (1) PHOTO-PLATE 3	200
311	* 1895 QV 2/6 Brown Counterpart SG F57a Mint with light gum ageing. CP Cat \$500 (1) PHOTO-PLATE 3	250
312	** 1913/21 QV 4/- Brown Red SG F114 Unhinged. Centred to top. ACS Cat \$900 (1) PHOTO-PLATE 3	450
313	U 1940/58 Arms 25/- Blue SG F204 Fine Used ACS Cat \$2000 (1) PHOTO-FRONT COVER	1000
314	U Arms 1/3 Lemon to £1 Simplified Set ACS P35/P50 Very Good Used ACS Cat \$993 (16)	500
315	U Arms 1940 Surcharges Set Simplified ACS P62/P67 Nice Used ACS Cat \$1440 (5)	750

LOT		NZ\$
316	U OFFICIAL 1908 QV £1 Rose SG 072a Very Good Used ACS Cat \$1000 (1) PHOTO-FRONT COVER	500
317	* OFFICIAL 1933 Arms 5/- Vertical Overprint SG O113 Good Mint ACS Cat \$750 (1) PHOTO-PLATE 3	375
318	U QV Long Types 2/- to £1 Simplified Set (12'6 Fiscal) Nice Used ACS P7/P20 ACS Cat \$2625 (14)	1300
	<b>REVENUES</b>	
319	U Beer Duty 1883 QV 6d Blue, 1/3 Red & 13/- Orange-Brown Kiwi R27,R29,R38 usual condition. Kiwi Cat \$500 (3)	400
320	U FINE PAID 1930 Piece with FINE PAID QV 35/- Yellow Pair & QV 7/6 Grey FINE PAID Kiwi R74/82 plus QV £15 & 10/- values all tied by STAMP DUTIES/OTAGO cancels. All Perfined. Fine Revenue Item (5)	5000
321	C FINE PAID 1949 Share Transfer on Printed 'The Tai Tapu Central Co-Operative Dairy Limited Form. Has KGVI 4d Magenta FINE PAID Kiwi R119 plus KGVI 1/3 both tied by STAMP DUTIES DEPT/CANTERBURY cancels. The form folded and with minor faults. (1)	150
322	* Honey Seals 1838/53 1/4d Red, 1/2d Green, 1d Blue, 2d on 1/4d Red, 2 1/2d Black, 5d on 2 1/2d Black, 5d Magenta. Kiwi R127/130, 130a, 131 Mint/ Mint No Gum. Kiwi Cat \$462 (7)	250
323	U Passport Fee 1926/35 KGV 1/- Orange P14x14 1/2 Kiwi R169b Scarce Kiwi Cat \$750 (1) PHOTO-PLATE 3	500
324	U Railway Newspaper 1890 Set including 3d Lemon-Yellow & 3d Brown. Kiwi RN1/7 & RN5ab Scarce Cat \$900 (8)	500
325	C REVENUE 1944 Legal Document Deed between William Scott Agnew and The New Zealand Co-Operative Dairy Company Ltd for the company to pay the employee overtime to the value of £52.12.7. Has various 1943 Social Security stamps 1d to £4 plus 15/- Arms tied. Interesting Item (1)	100
326	U Social Security 1934 on piece 1d Grey, 6d Blue, 10/- Brown-orange, #1 Pale Blue & 3x £4 Pink all dated 30 NOV 1934. Kiwi Cat \$274 (7)	150
327	U Stamp Duty 1935 Arms £3,890 Gold High Value Kiwi R554A Perfined with good margins. Kiwi Cat \$700 (1) PHOTO-PLATE 3	350
328	U Stamp Duty 1939 35/- on 35/- Orange-Yellow Kiwi R560 Unpunched Kiwi Cat \$100 (1)	75
329	U Stamp Duty 1939 Arms £600 on £600 Orange & Blue Kiwi R580 Perfined. Scarce Kiwi Cat \$300 (1)	250
330	U Stamp Duty 1939 Arms £800 on £800 Bronze-Green & Blue Perfined. Kiwi Cat \$500 (1) PHOTO-PLATE 3	400

## NEW ZEALAND POSTAL HISTORY

### PRESTAMP ENTIRES/COVERS

331	C 1856 (NO27) Stampless Cover to 'E W Stafford Esq, Auckland' (Premier 1st Year) sent by Alfred Domett. Has Nelson NO 27 1856 backstamp. Has Handstruck '2' in Black and Auckland unframed cancel. Fine Stafford Premier Cover (1) PHOTO-PLATE 6	300
-----	--	-----

### FULL FACE QUEEN COVERS

332	C 1864 (NO18) Entire with Perforated 2d Blue P13 SG 72 tied by DUNEDIN/OTAGO duplex cancel sent to Mr Eccles, Dunedin Exhibition, by the manager of the Otago Fire and Marine Insurance Company (Henry Houghton) to provide the insurance cover for the exhibition buildings and contents. The cover has staining on the front. Interesting Exhibition Item (1) PHOTO-PLATE 6	450
-----	---	-----

LOT		NZ\$	LOT		NZ\$		
333	C	1871 (JU15) Small Cover to Miss Earp, Porirua, Wellington with Perforated 2d Blue tied by part obliterator cancel. Backstamped PORT AHURIRI & Wellington JU 20 71 receiving cancel. (1)	250	347	C	1941 (19SP) OHMS Small Printed Cover to USA. Has 3d Pictorial tied by Auckland cancel. Nice single rate cover (1) PHOTO-PLATE 6	100
334	C	1971 (OC15) Mourning Cover addressed to 'The Hon'ble E W STAFFORD, WELLINGTON' (Opposition Leader) with 2d Blue Perforated Full Face Queen Posted at Nelson. Fine Item (1) PHOTO-PLATE 6	300	348	C	1970 (25DE) Helicopter Mail to Campbell Island NZAMC #600 Air Drop Cover via USCG 'Staten Island' signed by Postmaster Campbell Island. with 4d Captain Cook stamp tied. Backstamped Campbell Island. Fine Airmail Cover (1)	50
		<b>FIRST SIDEFACE COVERS</b>				<b>AIRMAIL COVERS</b>	
335	C	1875 (DE16) Long Cover to England bearing 1/- Green & 6d Blue tied by '4/ONEHUNGA/A' Obliterator. Backstamped Onehunga, Auckland. The cover has a tear in the right corner, a light vertical crease at left and minor ageing. Scarce Auckland Obliterator Cover (1) PHOTO-PLATE 6	750	349	C	1921 (31JA) Early 'Aerial Mail' endorsed cover from Ashburton to Christchurch Has KGV 6d Red & 2d Surface values tied by Ashburton cancel. NZAMC #26f Very Scarce Flight Cover by Canterbury (NZ) Aviation Co. (1) PHOTO-FRONT COVER	600
336	C	1880 (18JY) Cover to USA with 6d Blue tied by WELLINGTON duplex cancel. Backstamped SAN FRANCISCO PAID ALL red cancel. On the front has 'PAID ALL' handstamp at left. The cover has a light horizontal crease at top. Minor ageing (1)	75	350	C	1934 (17FE) Printed Trans-Tasman Blue Printed Flight Cover to USA with 7d Blue Trans-Tasman stamp tied by AUCKLAND Relief cancel. Backstamped Sydney. (1)	50
337	C	1882 (23JA) Cover with 6d Blue tied by WESTPORT duplex cancel to Indiana, USA. Backstamped Wellington. Has Red 'PAID-ALL' handstamp and part US violet cancel. (1)	100	351	C	1934 (29MR) Trans-Tasman 6th Crossing Southern Cross Printed Cover with 7d Brown Air tied by special cancel. Signed by 'C Kingsford Smith' Nice Signed Cover (1) PHOTO-PLATE 6	200
		<b>SECOND SIDEFACE COVERS</b>				<b>LIFE INSURANCE COVERS</b>	
338	C	1883 (13AP) Long Cover to SCOTLAND bearing 6d Brown Posted at DUNEDIN. Has Postage Due Cachet - 'Deficient Postage (6)/Fine...(6)' plus 1/- black handstamp. The cover has slight soiling and a minor tear and corner crease. (1)	500	352	C	1890's Printed GLI/Dunedin Agency GI 284 (10,000-12-96) Cover with 1/2d Purple P10 tied by DUNEDIN cancel to a local address. Also has 'Commercial Papers' blue cachet. Fine & Scarce (1) PHOTO-PLATE 6	300
339	C	1895 (30NO) Registered Large Printed Cover folded to FRANCE with 8d Blue Pair tied by REGISTERED/AUCKLAND double circle cancel. Backstamped DIEULEFIT/DROME cancel. Boxed black Registered Auckland handstamp. Light ageing Very Scarce (1)	400	353	C	1946 (19JL) 6x Printed 'NZ Government Insurance Department' Covers with Blocks of 4 Posted at Wellington - 1/2d, 1d, 1 1/2d, 2d, 3d, 6d values. SG L37, L38, L27, L39, L40, L41. SG Cat £636 for the stamps alone (6) PHOTO-PLATE 6	500
		<b>1898 PICTORIAL COVERS</b>				<b>MILITARY COVERS</b>	
340	C	1898 (16DE) Large Registered Cover to GERMAN with 1/2d, 2d, 2 1/2d, 3d & 4d London Prints Posted at WELLINGTON cancels. Backstamped Dresden. Nice Early Cover (1)	450	354	C	1919 (24AP) Stampless Cover to NZ with 'NZ Base Depot PO' cancel. Backstamped Ashburton. The cover has light soiling and minor faults at left (1)	150
341	C	1909 (30JL) Leaf Mail with 3d Brown 1907 Pictorial tied by OAMARU coin cancel. Has Registered label at left. Interesting item (1)	200	355	C	1941 (2DE) Censored Airmail Cover addressed to A J Walker AB, 25 Mess, MHS Naptune, C/- Navy Office, Wellington. Has 9d Pictorial tied by EPSOM cancel. Has boxed 'Return to Sender/At Present Undeliverable/(Naval Board Instructions)' cachet. Backstamped Auckland Delivery cancel. Minor ageing. SHIPMAIL Cover (1)	100
342	C	1910 (12SP) Registered Cover to France with 2d Purple Pembroke & 2 1/2d Wakatipu tied by OPUNAKE coin cancels. Has Registered Printed label. Backstamped Trav PO Taranaki, Wellington Registered & France receiving cancel. (1) PHOTO-PLATE 6	200	356	C	1942 (30MY) Endorsed 'Prisoner of War Post' Cover addressed to Private Victor Burgess, British Prisoner, 2nd NZEF, Geneva, SWITZERLAND. Has 2d '35 Pictorial Posted at Governor's Bay. Censored No 7 cachet. Fine Cover (1)	100
		<b>KGV COVERS</b>					
343	C	1916 (23MY) Uprated 1d Dominion Printed Inland Postcard with KGV 2d Yellow added tied by Auckland cancel to Weltevreden, Java, Dutch East Indies. Has Weltevreden 21/6/16 receiving cancel. Nice Destination. (1) PHOTO-PLATE 6	200	357	C	1943 (9AU) Internment Camp, Pahiatua cacheted Cover addressed to 'Public Trust Office, Wellington' Has Censor & boxed Exempt from Postage handstamps. Fine & Very Scarce Internment Camp mail (1) PHOTO-PLATE 6	500
344	C	1921 (9DE) Registered Cover to England with '20 1 1/2d Victory & KGV 4 1/2d Green Posted at WESTPORT. Backstamped Registered London. The cover is lightly aged with a minor tear at left. Scarce KGV value on Cover (1)	150	358	C	1945 (6AP) Registered Printed KGV 1d Cover cancelled with 'NZEF/Post Office P1' with Registration label 'Mangere MC' endorsed Mangere Camp on the back. Interesting Military Camp Cover. Very Scarce (1) PHOTO-PLATE 6	500
		<b>1935 PICTORIAL COVERS</b>					
345	C	1937 (3SP) Airmail Cover to JAPAN endorsed 'Via Singapore' with 1/- Pictorial Posted at HAMILTON. Backstamped Victoria/Hong Kong. Single rate cover. (1)	100	359	C	1945 VJ TOKYO/On Active Service/HMNZS Gambia Blue cachet on Stampless Cover to NZ (1)	100
346	C	1940's Airmail Cover to SWITZERLAND with '35 8d & 1/- Pictorials plus '45 1d Health tied by Auckland cancels. Has Red boxed 'OAT' handstamp. Fine & Scarce (1)	100			<b>MISCELLANEOUS</b>	
				360	C	1900 (6JY) Cover with Switzerland UPU Set tied by BERN cancels to Sydney, AUSTRALIA. Has on the front a boxed 'MISSENT TO/INVERCARGILL' Backstamped RPO DN-N, Invercargill, Sydney & Kogarah cancels. Rare Missent Marking (1) PHOTO-PLATE 6	850

LOT		NZ\$	LOT		NZ\$		
361	C	1906 (18JA) Printed Blue Form 'New Zealand/NOT TRANSFERABLE' authorising Mr (R C Huglus) to obtain the counter-signature of the proper officer to cheques of the Paymater-General for all sums from time to time payable to me, and to sign on my behalf for the same. Signed by the authorised agent - Mr R C Huglus a Solicitor at New Plymouth. Has Claimant's Signature at the bottom. Has KEVII 2d Mauve with date and initials. Lightly folded (1)	50	374	C	1953 Printed Parcel Card from Messrs Vallerini & Corsi & Co to Mair & Co Ltd, Christchurch, NZ for a 'Calico Bag' Has NZ KGVI 6d Red & 10/- Arms tied by Christchurch machine cancel. (1)	100
362	C	1909 (OC18) F Howell & Co/Central Piano & Organ Depot/14 Octagon/Dunedin Printed Cover addressed to Mr W Sutherland, Lightkeeper, North Heads. The envelope has no stamp but has large number of cancels including Onehunga, Awhitu, Awhitu Central, Te Kapa. Also Main Trunk TPO South machine cancel. Interesting Lighthouse related cover. Has in red manuscript 'Not known in Marine Dept' (1)	250	375	C	1909 (16JL) Picture Postcard with 1/2d Green Mt Cook tied by ROTORUA cancel to Mangere (17 JL 09 receiving cancel). Also Auck-Thames TPO machine cancel. Fine & Scarce (1)	250
363	C	1924 War-pension Certificate Printed Blue Form for a sum of 10/- per week subject to a Medical Examination (1)	50	376	C	1909 (JA26) Inwards Cover from Washington USA to Auckland. Backstamped San Francisco & Blue 'Main Trunk TPO/South' machine cancel. The cover lightly aged. (1)	150
364	C	1950 (27SP) On Small piece - 'This parcel was salvaged from a Fire at the Christchurch Railway Station on 27.9.50. If necessary, kindly communicate with nearest Postmaster and submit wrapper and contents' Fine and interesting item (1)	100	377	C	1912 (13JA) KEVII 3d Printed Registered Cover from NEW PLYMOUTH to Dunedin. Backstamped Trav PO Taranaki, TPO Wanganui/Wellington & Travelling PO South Canterbury. Also Dunedin Registered Octagonal cancel 16 JAN 1913. Fine Railway Cancelled Cover (1)	200
365	C	1961 £1 British Postal Order with 'New Zealand 6d/3d' Overprint with counter foil. Has a light vertical crease and 2 punchholes (1)	150	378	C	1903 (19JN) QV 1d Printed Pictorial Postcard cancelled with fine 'PACKET BOAT' handstamp to Mainz, GERMANY. Has 'NZ Marine PO/RMS Sonoma' Green ship cachet. Fine & Scarce (1) PHOTO-PLATE 6	300
366	C	1967 5/- (50 Cents) British Postal Order with 'New Zealand 4 Cents' Overprint with no counterfoil (1)	50	379	C	1930 (5AU) 1d Metered Cover to 'The Manager, Chase National Bank of the City of New York, New York, USA'. Has 'Salvaged from SS Tahiti ..' light violet cachet. usual water damage (1)	200
367	C	<b>OFFICIAL COVERS</b> 1869 (DE21) Long 'On Public Service Only/Superintendent's Office' envelope cancelled with 'Free/Auckland/New Zealand' addressed to 'The Inspector of Slaughter House, Newmarket' includes a letter from the Superintendent's Office. Slight soiling. Scarce (1)	300	380	C	1934 (11DE) Cover endorsed 'Per Aorangi via Vancouver' to Maine USA with '34 Health Crusader stamp tied by Auckland machine cancel. (1)	100
368	C	1873 (MR12) Long 'On Public Service Only'/Office of the Court of Land Claims (Secretary For Crown Lands) with HJ Masters signature at top right. Addressed to Gunn Esq, Insurance Buildings, Auckland.. Has in red manuscript 'Left the Colony - No Address'. The cover has a slight tear at top left. (1)	200	381	C	<b>ADVERTISING COVERS</b> 1897 (16FE) Printed 'PITCAITHLY, WALLACE & CO' Ship and Insurance Brokers Printed Cover with the printing on the back of the cover. Has 1d 2nd Sideface Posted at Christchurch to Ashburton (backstamped). Fine Advertising Cover (1)	100
369	C	<b>PERFIN COVERS</b> 1940 (23OC) Vaccum Oil Company Ltd Printed window envelope with 1d '40 Centennial perfined 'VOCO' tied by Rotorua cancel. The stamp has slight damaged at the base. (1)	200	382	C	<b>EXPRESS DELIVERY COVERS</b> 1931 (12SP) Long Express Cover with KGV 9d Green & 6d Fernleaves tied by Christchurch cancel to a local address. Has 2x Express Orange-Red labels at left. The cover has a light vertical crease. (1)	300
370	C	1946 (2FE) Printed Metro-Goldwyn-Mayer Window envelope with KGV 1d Green perfined MGM tied by Wellington machine cancel. Backstamped Oira. (1)	150	383	C	1940 (27FE) Cover with 6d Car, 1940 1 1/2d & 1/2d Centennial Stamps Posted at Dunedin to Timaru. (1)	200
371	C	1947 (15JL) VACUUM OIL Co Printed window envelope with '46 1d Peace perfined 'VOCO' tied by Taihape machine cancel. No backstamp (1) PHOTO-PLATE 6	250	384	C	<b>POSTMARKS</b> 1929 (OC) Picture Postcard with KGV 1/2d Green & 1d FM tied by 2 light/part PUREWA CAMP cancels to Belgium. The card is endorsed PWD (Public Works Department, St Helier's Bay Rd, Auckland) Railway Construction Camp 1926-1931. (1)	100
372	C	1901 (FEB15) Inwards Printed 'Ann Arbor Printing Co, Ann Arbor, Michigan' Cover to Ponsonby, New Zealand. Has 'To Pay/3d/Double Deficient Postage' handstamp. Has 3d Due tied by Auckland 26 MR 01 cancel. The cover has a vertical crease. (1)	250	385	C	Domain Fete/Christchurch (CH) 1913-13 Postcard Christchurch Domain with 1/2d KEVII tied by C Class 20 FE 13 cancel. Slight overinking. Scarce (1)	200
373	C	1941 (21MR) Long Censored Cover endorsed 'Clipper Air Mail' Commercial to New York, USA with '35 3/- Pictorial & 5/- Arms Posted at Dunedin. 8/- Double Rate Cover. Kempthorne, Prosser & Co Cover. (1)	250	386	C	Fitzherbert West (PM) 1908-18 Fair/Good H Class (English) 12 OC 16 receiving cancel on Postcard from Hamilton. The card has light ageing. Very Scarce. Rated 9 (1)	200
				<b>NEW ZEALAND POSTAL STATIONERY</b>			
				<b>AEROGRAMMES</b>			
				387	C	1943 (24AU) 1/- Blue POW Aerogramme Samuel GA.3a cancelled at HIGH nSTREET/CHRIST-CHURCH to Allan Wilson, 2nd NZ Expeditionary Force, Camp PG57, Posta Militare 3200, ITALY. Has Red Boxed Octagonal handstamp. Fine Item (1) PHOTO-PLATE 6	300

LOT		NZ\$	LOT		NZ\$		
<b>NEW ZEALAND POSTCARDS</b>			<b>CHILE</b>				
388	C	1912 Avondale Camp showing The Band of the 3rd Auckland NZ Mounted Rifles. Unused. Fine Territorial Card (1)	75	399	U	1853/1862 Imperf Range on Hagner Page - 2x 5c Blue Paper, 21x 5c White paper several on piece; 9x 10c White Paper, 2x 10c bisects on piece; 1x 5c on 1864 Entire (35 items)	250
389	C	Posting Album/Books & Papers Ltd/On the Trains NR containing 6x Coloured Tucks Postcards showing Scenes of Ohinemutu, Rotorua, Whakareware wa. Fine lot (6)	100	<b>CHINA</b>			
<b>COLLECTIONS &amp; ACCUMULATIONS</b>			400	*U	1940's/1960's Mint & Used Collection on Album Pages noted 1963 Snub-nosed Monkeys 3x Mint Sets & extra, 1963 Giant Pandas 5x Mint Sets, 1963 Landscapes Mint set. Some heavier hinging. High Catalogue Value (400)	750	
<b>ADEN</b>			401	**	1999 Year Collection Complete with Sets & Miniature Sheets incl Return to Macau Min Sheet Unhinged. SG Cat £228 (51 stamps & 5 Min Sheets)	100	
390	C	1940/1965 Range of Covers addressed to Walter Nicholas with a range of stamps and markings - Noted 21x Registered Covers, 8x Ordinary Covers, 3x Aerogrammes, 1x Postcard, 3x First Day Covers. Mostly good condition. (36 Covers)	500	402	**	2000 Yearbook complete with all sets & miniature sheets Unhinged SG Cat £250 (84 stamps & 6 Min Sheets)	150
<b>AUSTRALIA</b>			403	*U	Collection Earlies to Modern Range on Album Page. Useful lot (850)	250	
391	U	1913/2000's Range in 3x Multi 55 Albums with a useful Definitives & Commemoratives. Noted recent values incl self adhesives. Also Christmas Island, Australian Antarctic plus 14x pages Australian States. (100's)	250	<b>CYPRUS</b>			
392	**	AUSTRALIA & TERRITORIES 1930's/1960's 2x Albums with looseleaf pages with Sets & singles Many in Blocks Noted Australia 1959 Definitives incl 5/- Cattle Block of 6, 1948 Arms 10/- & £1 Pairs, 1964 Navigators incl £1 Pair & £2 Pair & single, 1960 2/3 Commems in Blocks; Cocos Island 1963 Definitives x 36 Sets many in Imprint Blocks; PNG 1964 10/- Rabaul Block of 4; Norfolk Island 1966 Decimals Set in Blocks. Also GB 1963 Cable Phosphor 3x Blocks of 4. Clean lot. High Cat Value (100's)	1000	404	C	1946/1965 Range of Covers addressed to Walter Nicholas with a range of stamps & markings - Noted KGVI 14x Registered Covers incl 2x AV2 cachet, 4x Ordinary Covers & 1x KGVI Postal Stationery Postcard; 4x QE Registered Covers, 5x Airmail Covers, 1x QE Postcard. Mostly good condition (29 Covers)	750
393	*U	AUSTRALIAN STATES Collection on pages mostly Used - New South Wales (10), Queensland (58), South Australia (47), Tasmania (38), Victoria (240) incl Stamp Duties, some fiscals but has £5 CTO, Western Australia (57). Condition very mixed (450)	450	<b>ETHIOPIA</b>			
394	C	1945/1974 Range of Covers addressed to Walter Nicholas with a good range of stamps & markings - Noted 68x Airmail/Ordinary Covers, 11x Postcards & 36x Registered Covers. Mostly good condition. Suit internet seller (109 Covers)	900	405	C	1945/1973 Small lot of Covers addressed to Walter Nicholas with various stamps and markings - Noted 10x Registered Covers, 10x Air/Ordinary Covers. incl 1949 Registered AV2 cacheted Cover. Mostly fine. Interesting covers (20)	450
<b>BRITISH POSTAL AGENCY EASTERN ARABIA</b>			406	C	1946/1964 Correspondence to Walter Nicholas, New Zealand with a good range of stamps and markings - Noted 26 Registered Covers, 57 Airmail Covers, 6x Postcards and 26x First Day Covers. Mostly good condition. (108 Covers)	950	
395	C	1953/1965 Small mostly QE Period Covers addressed to Walter Nicholas, New Zealand sent from Muscat with various stamps and markings. Noted 9x Airmail & 5x Registered Covers. incl 1953 1r on 1/- tied on Airmail Cover and also 1965 Printed Registered Cover with QE 2x SG 51 & SG 73 tied. Interesting lot (14)	500	<b>FINLAND</b>			
396	C	1947/1974 Small Range of Covers addressed to Walter Nicholas with a range of stamps and markings - Noted 9x Registered, 8x Airmail & 3x First Day Covers. Mostly good condition (20)	300	407	C	1860's-1930's Range of Covers & Postal Stationery incl 1867 Prussia 3k Wrapper, 1872 1gr Entire tied by Munster cancel, Range of Inflation Period Covers incl Larger Covers, 1939 Cover to China. Condition varies (52)	400
<b>BURMA</b>			408	*U	1840/1948 Mainly Used Collection on Album Pages noted 1840 QV 1d Black x 2 Used with 2/3 Margins, QV 1d Brown Plate range incl Plate 224 Used, 1847/54 6d Embossed Used, Surface Range incl 1867 QV 5/- Rose Plate 2 with 'C' (Constantinople) cancel SG 230 Cat £800 Used, 1883/84 QV values to 10/-, 1902/12 KEVII to 5/- Used, 1929 £1 PUC SG 438 Good Used Cat £750. High Cat Value. A little perf staining. (420)	1500	
397	C	1937/1966 Small lot of Covers/Aerogrammes/Postcards mostly addressed to Walter Nicholas, New Zealand with various stamps and markings - Noted 10x Registered, 8x Airmail, 6x Aerogrammes, 1x First Day Cover & 2x Postcards. incl 1945 9ps Uprated Postcard Censored, also Uprated Registered 1948 cover from Tavoyzoo to NZ. Interesting lot. Suit an internet seller (27)	450	409	U	1840/1980's 32 Page Stockbook with large duplicated range Definitives & Commemoratives. Useful range. (1,000's)	250
<b>CANADA</b>			410	U	1840/1990's Used Collection in Multi-Ring 55 Album with Definitives & Commemoratives noted 1840 QV 1d Black 3 Margins, QV Range incl 2d Blue Perforated, also Surface Prints, KEVII values to 2'6. A few perfins noted (100's)	250	
398	U	REVENUES QV Bill Stamps Range of different values on an album page to \$2. Has some duplication. Cat £266 (85)	200	411	C	1939/1964 Range of Covers addressed to Walter Nicholas with a range of stamps and markings Noted - 6x Registered Covers, 2x Ordinary Covers, 8x Postal Stationery Covers, 2x Aerogrammes, 1x Forces Stampless Cover, 6x Portuguese India Covers, 1x Postcard. Noted 2x Gandhi First Day Covers. Mostly good condition (29)	400

LOT		NZ\$	LOT		NZ\$	
412	U	QV to KGV Used Range on 2x Hagner Pages including Officials Noted KEVII to 15r, KGV Set to 25r incl 2x 25r. Mostly good condition (164)	250	425	*/**/U 1855/1995 2x Lighthouse Hingeless Albums with Mint & Used Range noted 6x Imperf Full Face Queens incl 1d Orange with part DRURY cancel & 3d with part HEADQUARTERS cancel, 1st Sidefaces to 2/- Used, 1906 1d,3d,6d Christchurch Exhibition Mint. Useful Sets & singles. Condition varies (A few 100)	990
413	*/U	QV to QE Collection on Album Pages mainly Used noted 1854 1/2d Blue Imperf Used, KGV 1922/26 25r Used perfined, Good range Commemoratives to Modern, Range of Officials, Range of States on 25 Pages. Useful lot (100's)	400	426	U 1855/2000's Collection in 24 Page Stockbook includes Perforated 4d Rose Full Face Queen (2100+)	400
414	**	<b>ISLE OF MAN</b> 1970's/2000 Booklet Collection Range on Booklet Pages mostly different with odd duplication. Approx £128 Face Value (72 Booklets, 49 Different)	100	427	U 1862/1979 Collection in Warwick 55 Album noted odd Perforated Full Face Queens (5), 1931 2d Blue Boy, 1905 2d Chestnut Life Insurance, Revenues with QV Fiscals, Social Security incl 1931/33 Set to £4 Grey & 1934/35 £4 Pink, odd Arms Fiscals and odd Railway Charges. Condition varies (100's)	500
415	*/**/U	<b>ISRAEL</b> Stockbook 8 Page with a good range Mint & Used some with tabs Sets & singles (100's)	150	428	*/U 1873/1990's Mainly Used Collection on Album Pages noted 2nd Sidefaces, 1898 Pictorials to 5/- (5/- Mt Cook London Print with punched holes), 1d Dominion printings, KGV. Useful Definitives & Commemoratives, Health incl 2d Blue Boy, Life Insurance, Officials range (100's)	300
416	U	<b>JAPAN</b> Stockbooks 2x 8 Page with a good range earlies to modern. (100's)	300	429	U 1873/2000's 24 Page Stockbook Range Definitives & Commemoratives noted 1899 Postage Dues 2d,3d,4d,5d,6d,1/- . Noted a little perf staining on some stamps. Needs work (100's)	375
417	C	<b>MALAYA</b> 1939/1976 Range of Covers addressed to Walter Nicholas with a range of stamps and markings - Noted 19x Registered Covers, 32x Ordinary/Airmail Covers, 7x Aerogrammes & 2x Postcards. Mostly good condition (60 Covers)	500	430	U 1874/1882 First Sidefaces to 1/- & Second Sidefaces Range on Album Pages mostly Used. Range of printings and shades. Noted odd fiscals. Mixed condition. (430)	300
418	C	1951/1978 Range of Covers Malaya/Malaysia addressed to Walter Nicholas, New Zealand with a large range of stamps and markings - Noted 39x Registered, 1x Postcard, 4x Aerogrammes, 46x Air/Ordinary Covers & 33x First Day Covers. Mostly good condition. (122)	750	431	*/U 1882/1950's Mint & Used Range noted odd 2nd Sidefaces Used with different perf range Used, odd 1898/1900 Pictorials Used, KEVII Set Mint (light perf toning) & Used sets, 1d Dominions & KGV Range, 1935 Pictorials Used with different printings. Also 1931 Arms Mint Pairs 8x values incl 6/-,8/-,9/-,10/- with odd gum ageing. Condition varies (420)	500
419	C	BMA MALAYA 1945/1948 Large Correspondence addressed to Walter Nicholas, New Zealand with a good range of stamps and markings Noted 52x Registered Covers, 60x Airmail/Ordinary Covers, 3x Postcards & 1x Aerogramme. Mostly good condition. Suit internet seller (116)	1500	432	U 1882/1960's Collection used with specialised printings noted 2nd Sidefaces, Postage Dues, Life Insurance, Arms Types mainly postal. Mostly fine (100's)	475
420	*/U	Stockbook 8 Page noted Straits Settlement with Useful QV/KGV Range, Singapore, Malayan States & later Malaysia. Mostly Used. (100's)	400	433	*/**/U 1915 King George V Surface & Recess Collection on 16 Exhibition pages with stamps, covers and varieties noted 1/2d Green bronze Green Used, 1/2d Litho Paper with various watermarks, 1916 1 /2d Grey Recess on Censored Cover to USA, 1 1/2d Local with R1/1 on Ordinary & Official stamps Used, 1921 Mail Tag 8d in total value, 2d Yellow Jones Paper Used, 3d Brown Recess P14x14 1/2 Pair with Inverted Watermarks Used CP Cat \$1000, 3d Brown Surface R6/8 flaws on Jones, Cowan P14 & P14x15 stamps Used. KGV 4d Plate 44 retouches, 6d Carmine Plate 38 single. Nice range (166 & 14 Covers)	2000
421	*/U	<b>MALTA</b> QV/QE Collection Range on Printed Album Pages noted 1885/90 1/- SG 29 Mint, 1904/14 Range to 1/- Mint, 1922 2'6 Self Government Mint, 1922/26 KGV Set of 5/- Mint, 1926 Postage Part Set to 10/- Mint, 1926/27 Range to 5/- either Mint or Used, 1938 KGV Set Used, 1949 £1 Silver Wedding Mint. Part or Complete sets. Mostly good condition (100's)	400	434	*/**/U 1929/1967 Stockbook Mint Sets noted 2x 1931 Red & Blue Boys Sets (one set with gum toning). Also 1967/1985 Sets of singles, Blocks of 4 Unhinged and some Blocks of 4 Used all in 5 Stockbooks. Noted 1968 \$2 Multi Block of 4 Unhinged & Fine Used. Odd light tone. 6x Stockbooks (100's)	1500
422	*/**/U	<b>MONACO</b> Stockbook 8 Pages Mint & Used Range 1950's to Modern Sets & singles (A few 100's)	100	435	C 1935 PICTORIALS Illustrated First Day Cover Collection with values up to 3/- on various covers Noted 1 1/2d value on Handdrawn Ship Scene Cover. Also Last Day Printed Cover. Odd blemish (50)	750
423	*/U	<b>NETHERLANDS</b> NETERLANDS INDIES 1864/1940's Mint & Used Collection on Album Pages - Sets & singles noted 1864 10c Red Imperf with 'Franco' cancel, 1870/88 values to 2g50c Used, 1922 Bandoeng Industrial Fair Set Used SG Cat £450 etc. Conditon varies. High Cat Value (430)	500	436	C 1935 SILVER JUBILEE Illustrated First Day Cover Collection noted Jones C35.1A rated 7, C35.1B rated 7, C35.1E(2) rated 7, C35.1D (1+2) rated 7. Odd blemishes and a few unlisted covers. Some covers with complete sets (32)	1500
424	*/U	<b>NEW ZEALAND</b> 1855/1960's Collection in Warwick 55 Album mainly Used Noted Imperf Full Face Queen 2d SG2, 1/- SG 6, 1/- SG 16 & 17, 3d SG 40, 6d SG 41 & 43 Used in variable condition; Perforated Full Face Queens noted 3d Mauve, 4d Rose (oxidised), 4d Yellow postmarked '2' cancel; 1874 2/- Rose Mint (light toning), Range Definitives & Commemoratives. Odd Revenues incl 1880 £30 Pair & £500 Blue. Conditon varies. A few stamps oxidised. (100's)	900			

LOT		NZ\$	LOT		NZ\$		
437	C	1936 ANZAC Small Collection of Illustrated First Day Covers noted Jones C36.1C Rated 8, C36.A1A rated 8. Also 2x Last Day of Issue Covers. Odd blemish (20)	500	450	**	1998 (1898) Pictorial Centenary Collection Complete Limited Edition in Fine Condition. ACS Cat \$395 (1)	200
438	C	1936 Chamber of Commerce Collection of Illustrated First Day Covers noted Jones C36.2CA, C36.2CB rated 8, C36.2E rated 8, C36.2G in Green & Red Printed Covers, C36.2M, C36.2Q rated 9, C36.2S rated 8. Odd blemish. Good Range with some covers Registered. Noted a few unlisted covers (67)	2000	451	***/U	BACK OF BOOK Folder noted Antarctica 1908 1d King Edward 7th Used, Victoria Land 1910 1d Unhinged (light gum ageing) plus later issues; Life Insurance noted 1891 & 1905 Sets Used plus later sets. Range CALS from 2005 Mint or Used plus Odd Covers (A few 100)	450
439	C	1937 CORONATION Illustrated First Day Cover Collection noted Jones C37.1C, C37.1Q, C37.1AY rated 7, C37.1AX rated 8, C37.C1A rated 8, C37.1AQ rated 7, C37.1AJ rated 7. Noted some Unlisted Covers. Great Range with odd blemish (191)	3500	452	*U	CINDERELLAS Folder with a good range on Hagner Pages 1950's/2000's good range of labels many advertising. A great lot to expand (approx 500)	1000
440	C	1938/47 KGVI Illustrated First Day Cover Collection noted Jones D47.1D(2), D38.1JD Pitcairn Island Rated 8, C38.2m rated 7, C38.3KCA rated 7. Great range. Odd blemish. Noted some Unlisted Covers (183)	2000	453	*U	CINDERELLAS Folder with Hagner Pages of Advertising labels, some on piece 1960's/1990's range. Interesting Range (250)	500
441	C	1940 CENTENNIAL Illustrated First Day Cover Collection noted Jones C40.E(b) rated 8, C40.1JDA rated 8, C40.1JBA rated 8, C44.1D rated 6, C44.1F rated 7. Good range. Odd blemish. Noted a few unlisted covers (229)	2000	454	*U	CINDERELLAS Folder with Hagner Pages on Airmail/Aviation labels noted 1930's 1d Coastal Airways Ltd Rouletted block of 4, Air NZ Antarctic Flight 2x Blocks of 4 - 1x Specimen, Stirling & Co Anniversary Sheets, 2001 Christchurch International Airport 2x Oval labels tied on 2x Covers, 1959 40th Anniv Auckland-Dargaville Airmail Society Sheet, 1968 NAC 21st Anniv labels on 2 Covers, 1937 Union Airways Wellington-Auckland Cover with Silver/White label. Interesting lot (52 items)	400
442	**	1940's Presentation Post Office folder includes NZ 1939 Postage Dues Set, 6d Car Express; Cook Islands, Niue & Samoa Definitive Sets. SG Cat £195 (52)	100	455	***/U	HEALTHS 1929/1969 Collection Mint, Used, odd Blocks & Miniature Sheets noted 1931 Red & Blue Boys - Mint pair (1d Red Boy unhinged), Pair Used plus extra 2d Blue Boy. Noted a few flaws (100's)	500
443	C	1946 PEACE Illustrated First Day Cover Collection noted Jones C46.1PB Rated 9, C46.1V Specimen Rated 8, C46.1AB rated 8, C46.1AFB rated 8, C46.1Z rated 9. Noted a few Patriotic Cover and a few unlisted ones. Nice Range (109)	2750	456	U	PERFINS - Vacuum Oil Company (VOCO) Range of different stamps & varieties - KGV 1/2d, 1 1/2d Brown Vertical Pair double perfin, 4d Purple, 6d Red; 1d Map; 1935 Pictorials 3d Double perfin & mirror image pair, 4d single & pair, 6d double perfin, pair and mirror image pair, 1/-; 1935 1/2d Silver Jubilee; 1936 1/2d Anzac mirror image pair; 1937 1d Coronation; KGVI 3d Blue pair double perfin & strip of 3; 1946 1d Peace. Nice lot (28 perfins)	350
444	C	1948 OTAGO CENTENNIAL Illustrated First Day Cover Collection noted C48.1M Rated 6. Some Unlisted Covers including some different sizes. Nice Range (122)	1500	457	U	PERFINS on Overseas Stamps - Great Britain QV to KGV 8x different 'BNZ' Perfins; Victoria 1d QV Perfined 'NZL' x5; Queensland QV 1/2d, 2d, 3d perfined 'NZL' Australia KGV 1d, 1 1/2d(3), 2d & KGVI 2d Perfined 'NZL'; Great Britain KGVI 1/2d, 2 1/2d, 6d perfined 'NZ' (31)	150
445	C	1950 CANTERBURY CENTENNIAL Collection of Illustrated First Day Covers noted C50.1BB(b) rated 7, Duke Handdrawn Cover. Also 2x long Handdrawn Covers. Some Unlisted Covers & sizes. Good Range (116)	1250	458	U	POSTMARKS Balance of Collection of A Class (coin) cancels on Album Pages in a Filing Box noted Fairlie Creek, Flaxton, Manawaru, Maratoto, Barewood, Blackbridge, Coal Creek Flat, Awatere, Drummond etc. Part to good strikes (100's)	500
446	C	1953 CORONATION Illustrated First Day Cover Collection noted C53.1A rated 6, C53.1R rated 6, C53.1WB, C53.1Y, Purdon C53.1DIA, Range of Maxicards and also some unlisted covers. Good Range (155)	2000	459	U	REGISTRATION LABELS Exercise Book with 1960's/1970's Range of labels from many post offices. (A few 100's)	50
447	**	1967/69 DECIMALS Collection Unhinged & Used on Album Pages with singles, blocks, shades, coils all annotated. Also Plate/Imprint Blocks range to \$2 Pink. (439)	350	460	U	REVENUES - SOCIAL SECURITY Complete Sets on Stockcards - 1931/33 Unemployment, Employment 1937 & 1938, Social Security Sets - 1941, 1945, 1946, 1947, 1948, 1950, 1951, 1952, 1953, 1954/55, 1955/56, 1956/57, 1957/58. Fine lot Kiwi Cat \$802 (250)	400
448	**	1970 DEFINITIVES 1/2c to 50c Collection of Retouch Blocks, Flaws & Errors. Also another Stockbook 1970/1978 Range of Retouch & Flaws for Commemoratives, Christmas & Healths. Noted 1c Butterfly Black Colour Shift Blocks of 4 CP Cat \$1000, 2c Butterfly Major Purple-brown Colour Shift Block of 4 CP Cat \$700, 4c Moth Missing Pale Green, Purple Brown & Blue Missing Colours, 2 1/2c Moth Albino Surcharge Block of 4 CP Cat \$800, 10c Royal Missing Deep Blue Colour, 18c Maori Club Major Black Colour Shift. Odd blemish. High Catalogue Value (100's)	2500	461	U	REVENUES - SOCIAL SECURITY Dealer's Stockbook with a huge range of values set out in dates and values with much duplication. Noted a few blocks. A good lot to find varieties (1,000's)	1000
449	**	1997/2008 Chinese Lunar New Year NZ Post Miniature Sheet Special Edition Pack Complete containing 12x Numbered Miniature Sheets Unhinged (1)	50	462	**	REVENUES - SOCIAL SECURITY Mint range singles & multiples on Hagner Pages set out in values and different dates. Priced to sell at \$1300+ (A few 100)	350



LOT		NZ\$	LOT		NZ\$		
463	C	REVENUES Legal Documents 1895/1931 mostly with Fiscal Stamps noted 1895 Agreement, 1909 Agreement for Sale & Purchase, 1912 Partnership Agreement, 1912 Letter of Administration, 1922 & 1924 Transfer of Shares, 1923 Agreement for Repairs & Painting House, 1926 Agreement to Mortgage, 1931 Articles of Association. Interesting lot (10)	200	476	U	ASIA/MIDDLE EAST Collection in Warwick 55 Album noted Ranges of Iran, Iraq, Egypt, Pakistan, India & Ceylon. Earlies to Modern (100's)	100
464	*/U	Wanderer Printed Album QV to 1960's Mint & Used Range incl Imperf 2d Blue Used, 2nd Sideface Set Used, 1898 Pictorials to 2/- Mint or Used, 1926 3/- Admiral Used, 1931 Airs Set, 1925 Dunedin Exhibition Set Mint & Used, 1903 6d Express Mint & Used, 1953 QE Set to 10/- Mint & Used, 1931 Red & Blue Boy Pair Used, 1905 Life Insurance values. Condition Mixed (100's)	500	477	*/*/U	BRITISH AFRICA 16 Page Stockbook Earlies to Modern noted Cape of Good Hope, South Africa, Botswana, Gambia, Zimbabwe, Ghana, Gold Coast, Kenya, KUT, Rhodesia, Rhodesia & Nyasaland, Sudan, Tanzania, Zambia. (100's)	200
465	C	1946/1962 Correspondence to Walter Nicholas in New Zealand. KGVI/QE Periods with a good range of stamps and markings - Noted 30x Registered Covers, 33x mostly Airmail Covers plus 16x First Day Covers. Also a few local mail covers with boxed Victoria/Labuan 1946 cancels. Suit internet seller (79 Covers)	1250	478	*/*/U	BRITISH CARIBBEAN & Atlantic Large 32 Page Stockbook with a good range Earlies to Modern noted Antigua, Bahamas, Barbados, Bermuda, Belize, Cayman Islands, Dominica, Dominica, Grenada, British Guiana, Jamaica, Montserrat, St Kitts Nevis, St Lucia, St Vincent, Trinidad, Trinidad & Tobago, Turks & Caicos, British Virgin Islands. Noted a few good KGVI Sets. Huge Range. Mint & Used (1,000's)	900
466	C	1946/1973 Range of Covers addressed to Walter Nicholas, New Zealand with a range of stamps and markings - Noted 28x Registered Covers incl Printed Registered Covers, 5x Airmail Covers, 12x Aeogrammes & 9x Postcards. Interesting Range if stamps incl KGVI Overprints. Mostly fine. Suit internet seller. (54)	500	479	*/**	BRITISH COMMONWEALTH 1935 Silver Jubilee Set Complete with Mint or Unhinged Mint. SG Cat £1800 (250)	1000
467	*/U	1937/1975 Used Range on Album Pages with Sets & singles. Good Commemorative. Odd perf toning STC Approx £600 (590)	250	480	*/U	BRITISH COMMONWEALTH Collection in FG Peg Fitting Album Mint & Used Range noted Barbados 1852 4x Imperfs to 1/- Used, Perforated 5x Used to 1/-, 1892/1903 QV to 8d Used; Bechuanaland Useful QV Mint & Used Range; Bermuda 1865/1903 QV to 6d Used, KGV 1918/22 2'6 Mint, 1953/62 QE set Used; British Guiana 1860/66 Ships Set to 24c Used; British Honduras Useful QV Mint & Used; Brunei Range Mint & Used; Canada 1868/78 QV to 15c Used, 1897 Jubilee to 50c incl odd Mint, QV 1898 Set to 20c Used. Useful Range to 1957 Mint & Used. Condition varies with a little toning. High Cat Value (1200)	800
468	*/U	NYASSA 1898/1920's Mint & Used Range on mainly Printed Album Pages. Some duplication. Sets & odds. Odd perf staining (470)	100	481	*/U	BRITISH COMMONWEALTH Collection in FG Peg Fitting Album noted Grenada QV to KGVI Range Mint & Used, Hong Kong QV 1863/71 to 96c Used, 1917/21 China Overprints Set to \$2 Used, also 1922/37 to 50c Used, India 1854/1950's Mint & Used Range noted 1854 Imperfs, 1911 KEVII to 15r Used, 1926/33 KGV Used to 25r. Some Officials. Also Indian States Range Mint & Used with a good range of States on 36 Album Pages. Condition varies with odd light toning. High Cat Value (1270)	950
469	*/*/U	Stockbook Earlies to Modern including Pro Juventute & Pro Patria stamps. Noted 1924 Coat of Arms 40+ Sets Used. Useful Lot (100's)	500	482	*/U	BRITISH COMMONWEALTH Collection in FG Peg Fitting Album noted Malaysian States Mint & Used Range, Malta 1885/1950's Mint & Used, Mauritius 1858/1950's Mint & Used with useful earlies, Montserrat range, Morocco Agencies Mint & Used, Newfoundland 1868/1940's Mint & Used. Condition varies with odd light toning. High Cat Value (930)	375
470	C	1945/1973 Small Range of Covers addressed to Walter Nicholas with 1x Registered 1940's Cover, 1945 KGVI Cover, 1x OHMS Cover, 19x Air Covers with mostly self-adhesive stamps, 2x Aerogrammes plus 5x Finau 1950 Postcards all with Queen Salote 50th Birthday sets. Odd blemishes (29 Covers)	250	483	*/U	BRITISH COMMONWEALTH Collection in FG Peg Fitting Album noted Nyasaland Useful Earlies Used, Pakistan 1947/57 Mint & Used incl Bahawalpur Mint or Used, Range Palestine Mint or Used, Penrhyn 1902/27 Mint, Rhodesia 1890/1913 Mint & Used with useful values. Also Northern & Southern Rhodesia, St Helena QV to QE Mint & used, St Kitts-Nevis Useful Mint & Used, St Lucia QV to QE, St Vincent, Samoa 1887/95 Used, QV Fiscals Mint. Condition varies. High Cat Value (920)	750
471	U	Springback Album with Range Earlies to Modern mainly Used (100's)	75	484	*/U	BRITISH COMMONWEALTH Collection in FG Peg Fitting Album noted Odd Northern Nigeria, Nigeria KGVI/QE Range Mint or Used, Niue 1902/1953 Range Mint, North Borneo 1883/1950 Mint or Used Range with some CTO's. Condition varies with some light toning on some pages. (344)	200
472	C	1981/1983 Golden Replicas Album Collection containing with Commemorative First Day Covers all with 22kt Gold Replica stamps. (39 Covers)	100				
473	U	Stockbook 8 Pages Used Range Earlies to Modern Range Definitives & Commemoratives (100's)	150				
474	U	ASIA Collection in Warwick 55 Album with Japan earlies to modern range on 25 album pages noted 1950 103y & 144y Airs; Korea on 4 pages, Vietnam on 7 pages, Phillipines on 13 pages, Thailand on 16 pages etc (100's)	150				
475	*/*/U	ASIA Stockbook 16 Page Noted Bangladesh, Brunei, Burma, Ceylon, Hong Kong, India & States, Malaysia. Good Range (100's)	250				

LOT		NZ\$	LOT		NZ\$		
485	*U	BRITISH COMMONWEALTH Collection in FG Pegfitting Album incl Aden 1937 Dhows Mint/Used to 2r, 1953 QE Set Used; Aitutaki 1903/1927 Mint Range; Antigua QV Used Range, 1938/49 KGV I Set Mint, 1953 QE Set Used; Ascension 1938/53 KGV I Set Mint/Used to 10/- with some perfs, 1956 QE Set Mint; Bahamas Range QV to KGV I, 1954 QE Set Used, Bahrain Range. Condition varies. Some light toning on some pages. High Cat Value (480)	500	495	***U	PACIFIC ISLANDS 16 Page Stockbook Mint & Used Good Range noted Aitutaki, Cook Islands, Fiji, Gilbert & Ellice Islands, Niue, PN G, Penrhyn, Pitcairn Island, Samoa, Tokelau Islands, Tonga, Tuvalu. Sets & odds. (100's)	300
486	*U	BRITISH COMMONWEALTH Collection in Peg Fitting Album noted odd Cayman Islands, Ceylon QV to QE Range, Cook Islands 1893/1953 Range noted Makea & Toreas, 1932/36 Arms, Cyprus QV to QE Range Mint or Used, Odd Dominica, Fiji KGV I/QE Range, Gibraltar, Gilbert & Ellice Islands KGV I/QE, Gold Coast QV to QE Mint & Used. Condition varies with odd light toning. High Cat Value (830)	400	496	*U	PACIFIC ISLANDS Collection in Warwick 55 Album Mint & Used Earlies to Modern incl Fiji, Cook Islands, Niue, Samoa, Tonga, Norfolk Island, PNG. Sets & odds (100's)	150
487	U	BRITISH COMMONWEALTH Collection of Sets & singles on pages in a multi-ring album noted British Guiana KGV I & QE Sets, Cyprus KGV I Set, Gold Coast KGV I Set, KUT KGV I Set, Malta QE Set etc. mainly clean condition (440)	450	497	*U	RAPKINS Victory Album mostly Used range noted 1934 Australia-NZ Flight Cover & Faith in Australia NZ-Australia Cover with 7d Trans-Tasman stamp plus TOO LATE cachet, NZ 1931 Blue Boy Used. Useful World stamps (A few 100's)	100
488	*U	BRITISH COMMONWEALTH Collection on Album Pages in Springback binder noted Niue Mint & used earlies to modern, Nauru 1924/48 Ships Set Mint (some light staining) 10/- okay, Fiji KGV I Mint Set, Cook Islands range, Great Britain Used, Australia 1913/1980's Mint & Used with Roos, KGV. Also 1948 Arms Specimen Set Mint. odd blemish (100's)	300	498	U	SCANDINAVIAN 16 Page Sotckbook with a Range Denmark, Finland, Norway, Sweden. Earlies to Modern. (100's)	300
489	*U	BRITISH COMMONWEALTH FG Peg Fitting Album noted Sarawk 1955/57 QE Set Mint, Seychelles QV to QE Range Mint & Used, Sierre Leone QV to QE Range Mint & Used, Somaliland 1938 Set to 3r & 1942 KGV I Sets Mint, South Africa 1910/1950's Mint or Used Range, odd SWA, Sudan 1897/1950 Range, Swaziland 1937/53, Trinidad & Trinidad/ Tobago QV to QE Range, Odd Virgin Islands. Conditon varies with odd light toning. High Cat Value (1030)	450	499	U	WORLD Damaged Old Pre 1900 Printed Album with no covers with a range of stamps and cutouts noted Denmark, German & States, france, Roumania, India, USA. A bit of damage to a few pages. Needs work (A few 100's)	200
490	U	BRITISH COMMONWEALTH Mainly QE Range on 17x Hagner Pages with Sets & singles noted British West Indies, PNG. Also Hong Kong KGV & China Overprints. Useful range (A few 100)	200	500	***U	WORLD Stockbook Good Range Sets Many Used Sets Modern Range noted many Thematic Sets (100's)	200
491	**	BRITISH COMMONWEALTH Old Pim & Co Stockbook incl 1935 Silver Jubilee Mint Sets, odd Early Pacifics Mint, Malyasian States 1957/60's 10x Different Sets Unhinged. Condition varies. Needs work (A few 100)	900	501	**	WORLD Stockbook with Range Sets & singles Earlies to Modern Range plus a few Mint Sheets. Good Range (100's)	200
492	*U	BRITISH COMMONWQEALTH Collection in FG Peg Fitting Album noted Range of Indian States from Earlies on 18 Album Pages Mint & Used, Ireland 1922/1949 incl KGV Overprint Sets plus Seahorses Mint, Jamaica 1860/1950's Useful QV Mint & Used, KUT Range Mint & used, Kuwait 1923/1950's Mint & Used, Leeward Island 1890/1950's noted 1938/1951 KGV I Set to £1 Mint, Levant 1885/1920's Mint & Used, Malaysian States incl Straits Settlement on 26 Album Pages Mint & Used. Condition varies with some light toning (1390)	500	<b>POSTCARDS &amp; POSTCARD COLLECTIONS</b>			
493	***U	CENTRAL & SOUTH AMERICA 2x Stockbooks with a good range noted Mexico, Canal Zone, Costa Rica, Honduras, Nicaragua, El Salvador, Venezuela, Colombia, Bolivia, Ecuador, Paraguay, Chile, Argentina, Uruguay. Earlies to Modern (100's)	300	502	C	FRANCE 5x Different Valentine Cards Mint (5)	100
494	U	OMNIBUS 1937 Coronation Collection mounted on Album Page complete except for Morocco Agencies Tangier SG 244 All Fine Used. SG Cat £275 (201)	200	503	C	ROYALTY Queen Mary Silk Card, HRH The Prince of Wales Souvenir Visit to India 1905/06 Coloured Card, 3x King George V Cards incl Souvenir of Royal Visit to RUGBY to open New Speech Room. (5)	100

**End of**  
**Private Treaty Direct Sale**  
  
**Thank You**



108



113



112



114



120



Ex 121



122



128



Ex 125



124



Ex 126



130



134



135



136



137



Ex 146



Ex 150



Ex 153



151



157



155



154



163



165



156



Ex 170



175



Ex 172



174



181



184



185



Ex 191



Ex 188



193



195



202



205



209



218



217



234



239



249



255



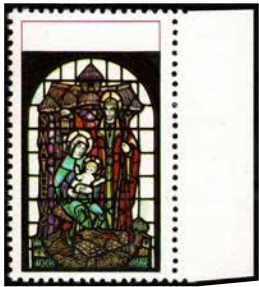
262



258



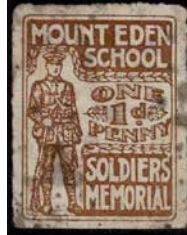
260



273



275



279



277



276



296



Ex 290



297



298



303



305



306



Ex 307



310



312



311



317



323



330



327



3

E. M. Barry, Esq.,  
68, Buckingham Gate,  
London, S.W.1.  
England.

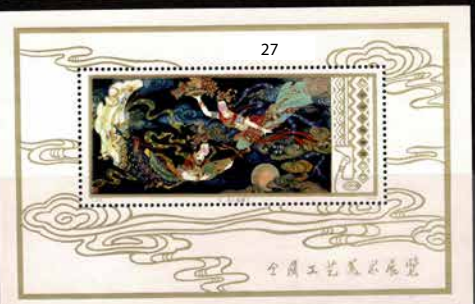


First Day Cover Ex 12

18th OCTOBER, 1961

Miss F. G. GIBSON  
28 ALBERT ST.  
STRATHFIELD  
SYDNEY.

SIR DOUGLAS MAWSON  
1911  
FIRST AUSTRALIAN ANTARCTIC EXPEDITION.



12 MAJ 1914  
THE FLYPOST SERVICE

VERDENSRETTFORENINGEN  
(UNION POSTALE INTERNATIONALE)  
BREVKORT CARTE POSTALE  
DAGEN

40

BY AIR MAIL  
PAR AVION

SYDNEY  
1 NOON  
to AIR  
1963  
IN S.W. AUSTRALIA

Mr. A. Marston  
& M. V. Tulagi  
TARAWA  
Christmas Island, G.E.I.C.,  
via Honolulu, Hawaii

54

PREVENT  
BUSH FIRES

SYDNEY  
12 noon  
8 FEB 8  
IN S.W. AUSTRALIA

T.O. 2000

John Gibson,  
M.V. Tulagi  
Santo,  
New Hebrides

105

Henry W. Gandy  
B. Robinson  
Wash. D.C.

57



Postkarte - Weltpostverein  
Carte postale - Union postale universelle

Deutsche Kolonialhaus  
Bruno Ambrunn  
Berlin G.1.  
Linselerstr. 28

101



Jakarta 14/11 1911

POST CARD  
STRAITS SETTLEMENTS

8/4

90

6 Postage

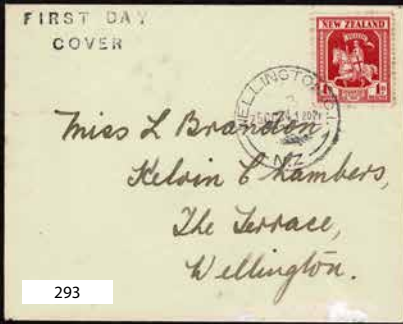
106

First Day Cover

Mrs. M. Purdon,  
No. 2, R.D.  
Whangarei  
Northland, N.Z.

109





293



352



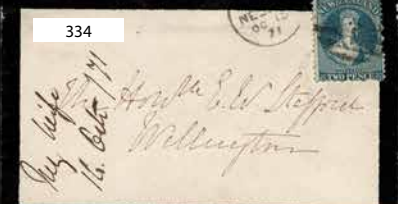
360



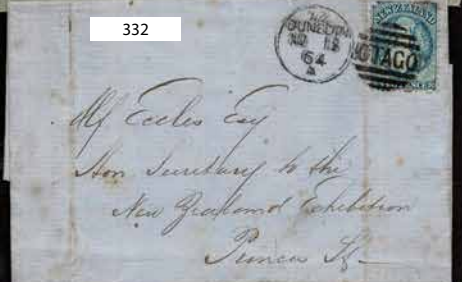
301



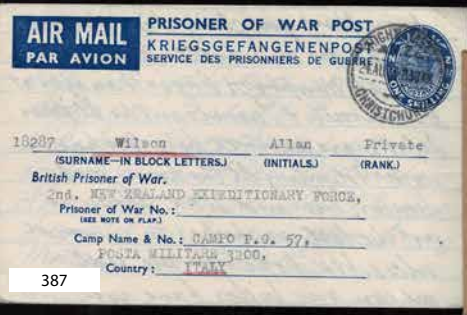
331



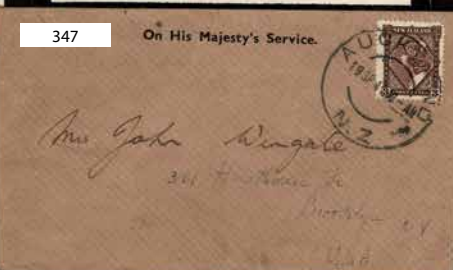
334



332



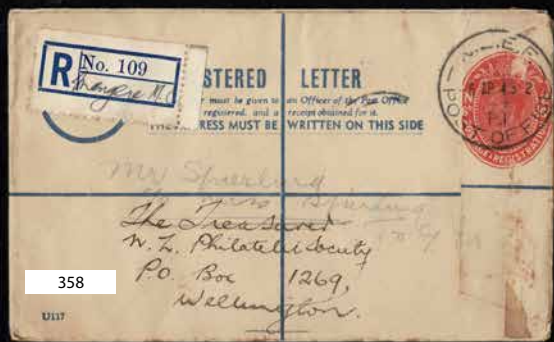
387



347



378



358



335



357



342



351



Ex 353



343



371



237



238



289



241



259



280



240

# Auckland City Stamps

EST. 1974



Licensed Auctioneers

PO Box 99988 Newmarket Auckland 1149 New Zealand  
Ph +64 9 522 0311 Email david@aucklandcitystamps.co.nz

[aucklandcitystamps.co.nz](http://aucklandcitystamps.co.nz)