



644



755



639

689

To Her Majesty the Queen

1. That the stamps (i.e. a 50c) which are being sold were specially prepared for, and accepted by the British Antarctic Expedition.

2. That no reports have been or will be made.

3. That the original supply every stamp has been accounted for and include those presented to the Queen's Commission and those used by the members of the Expedition.

4. That no second or officially cancelled stamps have been or will be sold in the public for less than 1/2 for the 5c and 2/3 for the 10c.

5. That the official Postmark has been placed on each stamp and that the 10c stamp (i.e. 10c) shall show the "Terra Nova" written on the front office at Cape Alice, Victoria Land, as per last listed stamp.

6. That the stamps were actually used with authority from the Government of the Dominion of New Zealand in postage on the mails marked by the N.Z. "Terra Nova" S.S.S.

Approved: *Charles M. Lewis* Asst. Postmaster at Victoria Land, 1914-17.

Commissary British Antarctic Expedition, 1914-17.



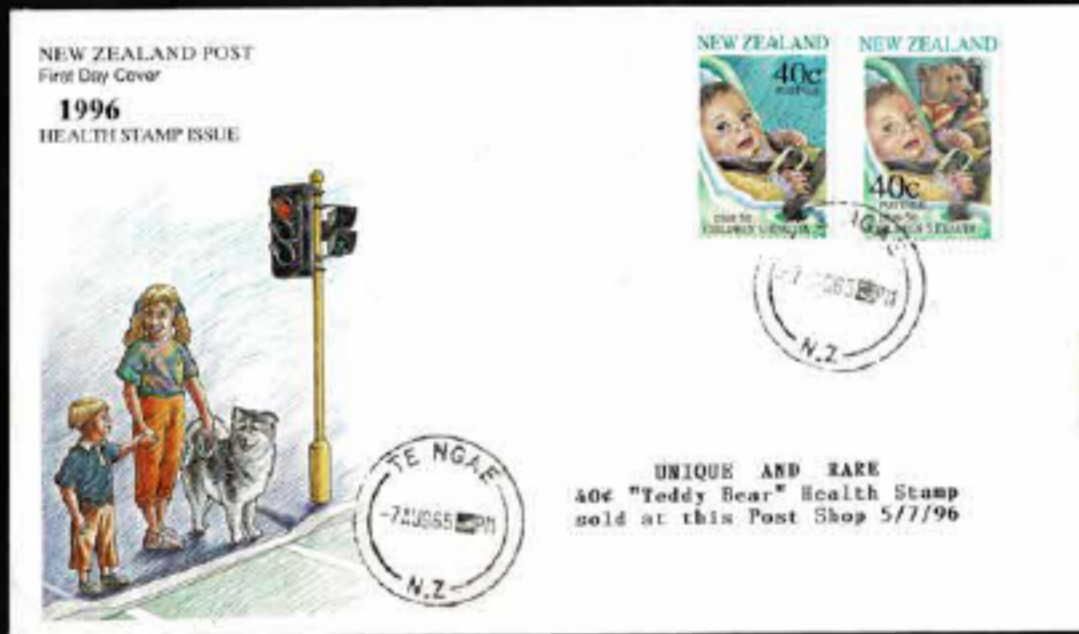
751



735



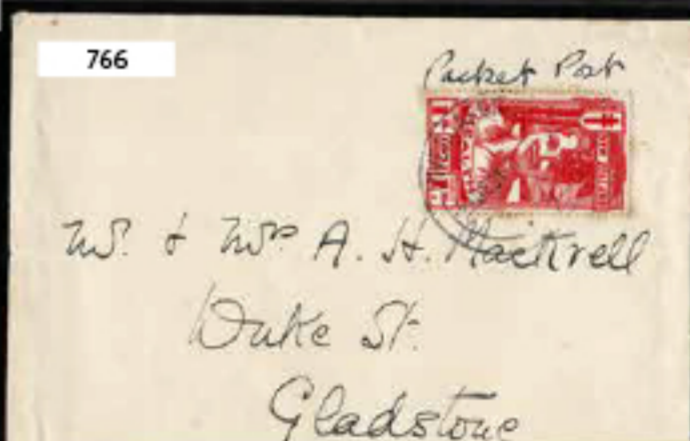
768



782



778



766



776



774



835