



New Zealand Postmark & Postal History April 2022

DIRECT SALE

All items are available for **DIRECT SALE** on a **First Come, First Served Basis**



9054



9119

View this **DIRECT SALE** online at www.aucklandcitystamps.co.nz





9150



9151



9152



9153



9154



9162



9165



9164



9166



9168



9169



9170



9179



9181



9182



9183



9187



9196



9204



9203



9205



9207



9185



9221



9228



9231



9246



9247



9253



9252



9248



9254



9258



9267



9273



9275



9280



9279



9287



9290



9296



9292



9308



9306



9310



9316



9321



9318



9328



9335



9337



9344



9358



9363



9367



9371



9373



9383



9384



9386



9396



9398



9410



9412



9418



9421



9419



9447



9435



9450



9451



9456



9464



9459



9467



Ex 9471



9481



9487



9488



9489



9494



9496



9513



Ex 9516



9521



9522



9524



9526



9533



9541



9543



9556



9557



9566



9582



9586



9592



9600



9618



Ex 9631



9637



9648



9650



9659



9660



9662



9664



9674



9678



9680



9692



9694



9701



9706



9707



9708



9723



9727



9736



9739



9741



9758



9762



9764



9769



9772



9774



9219



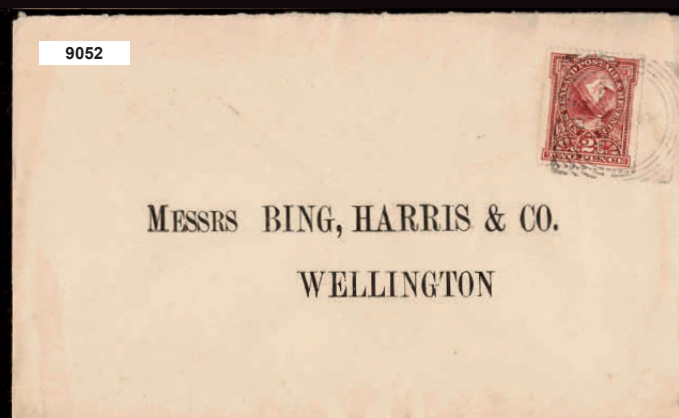
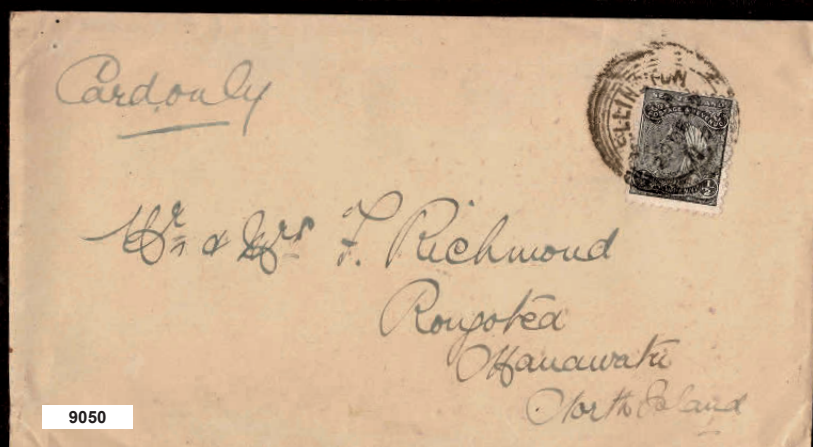
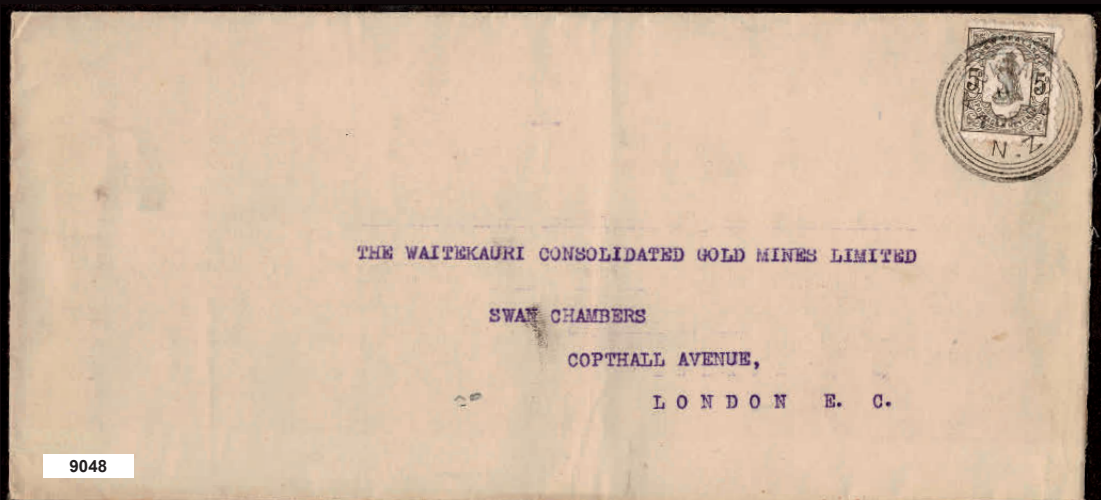
9379



9233



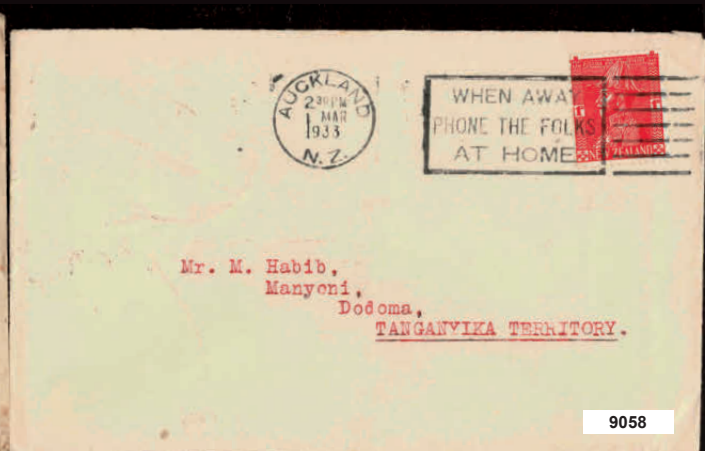
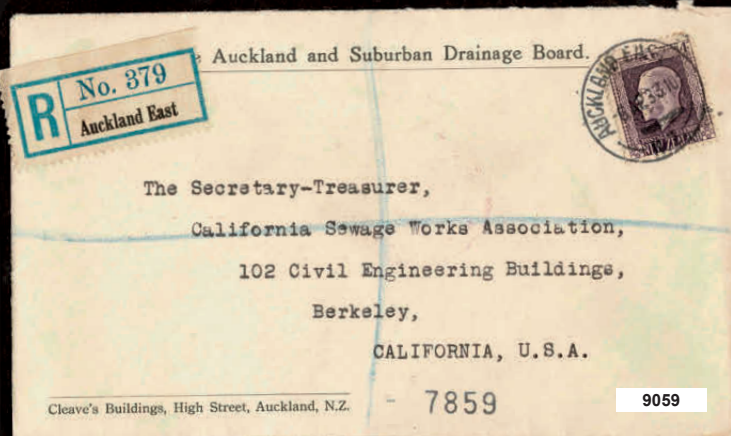
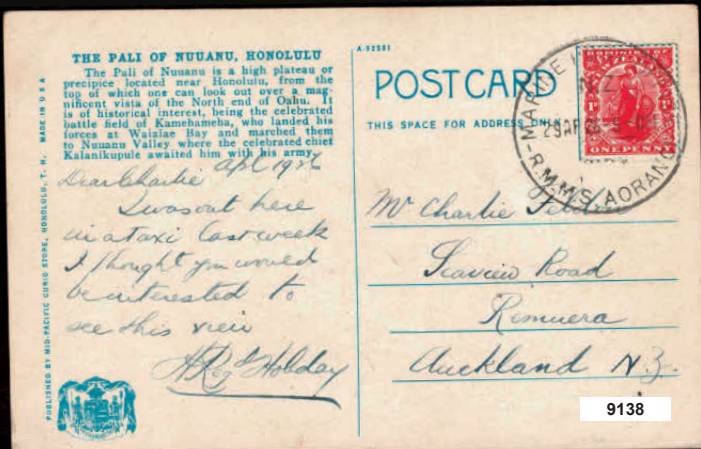
9695



Auckland City Stamps

EST. 1974

Licensed Auctioneers



www.aucklandcitystamps.co.nz

9062

On His Majesty's Service.

Airmail



9063



9066



9065



Kermadec Islands

Miss M. Hodson,
C/o New Zealand High
Commissioner,
415 Strand,
LONDON, W.C.2, Eng.

1971 Definitives
20 January — 15c — 18c — 20c
First Day Cover



Waiata
Taranaki Museum

9069

PRINTED MATTER Book



Mrs H I BLAKE
8 Hector St
HERNE BAY Auckland 2



WELCOME TO OUR NEW ZEALAND & POSTAL HISTORY DIRECT SALES

Dear Client,

We are pleased to offer a New Zealand & Postal History Direct Sales List for April 2022.

There are 790 items listed which includes (1) NZ Revenue Documents, (2) A Range of Postal History Covers and (3) Postmarks mainly Closed Post Offices listed in Postal Districts.

The highlights from this list are: -

- * Lot 9010 - NZ Revenue 1923/24 Document with Gold QV £8932 value - Price \$500
- * Lot 9020 - NZ Revenue 1932 Probate Document with QV £900 value - Price \$800
- * Lot 9042 - NZ Revenue 1944 Probate Document with QV £800 & £900 values - Price \$800
- * Lot 9048 - 1896 Cover with 5d 2nd Sideface value to London - Price \$200
- * Lot 9054 - 1914 Citizen's Fete/Dunedin Cover - Price \$200
- * Lot 9092 - 1904 Wales Meter Postcard - Price \$500
- * Lot 9102 - 1943 Pahiatua Internment Camp Cover - Price \$450
- * Lot 9119 - 1939 Mixed 1935 Pictorial/Postage Due Cover - Price \$300
- * Lot 9137 - 1946 Manawatu River Railway Cover - Price \$350
- * Lot 9188 - Remuera Camp (AK) 1944-46 cancel - Price \$100
- * Lot 9467 - Waiaruru (PM) 1921-26 cancel - Price \$150
- * Lot 9513 - Aporo (NN) 1912-16 cancel - Price \$200
- * Lot 9674 - Sherwood Downs (TU) 1912-17 cancel - Price \$100

All items are available for Direct Sale on a first come first served basis. As a bonus - if you purchase 3 or more items we offer a **SPECIAL DISCOUNT of 10%**

Kind regards,

David Holmes & Nigel Shanks

LOT			PRICE	LOT			PRICE
NEW ZEALAND STAMPS							
REVENUES							
9001	C	1903 Order to Adminster Legal Document with QV Long Types 3/-, 10/-, £9, £50 (Small Fifty), £100 plus 1900 4d & 6d Pictorials with all values unpunched. Minor ageing (1)	200	9021	C	1933 Probate 5 Page Legal Document with QV Long Types £1000, Arms 15/- & £5 plus KGV 9d values all tied and perfined (1)	150
9002	C	1913 Probate 3 Page Legal Document with QV Long Types 6/-, £4.10s, £25,£50,£200 & £500 (All Perf 11) plus KEVII 3d & 8d values all tied and unpunched. Fine Item (1)	250	9022	C	1933/34 Probate 11 Page Legal Document with QV Long Types £3.10s, £20, £50, Gold QV £3100 plus Arms 4/-, 5/-, 6/-, £1, £30(2) plus KGV 4d values all tied and perfined (1)	500
9003	C	1917 Probate 3 Page Legal Document with QV Long Types 9/-,10/-,£45,£100 plus KGV 3d unpunched and tied. Also Has Notice attached regarding assests shall not be distributed to certain countries (1)	100	9023	C	1933/35 Probate 3 Page Legal Document with QV Long Types 30/-, £6, £50, £100, £300, £700 plus Arms 5/-, 7/-, 30/-, £30(4), £35 (3), £100 plus KGV 3d, 1935 5d(2) & 8d Pictorials all tied and perfined (1)	600
9004	C	1919 Probate 2 Page Legal Document with QV Long Types 2/-, 5/-, 30/-, £20, £30 & £100 plus KEVII 5d(2) & 8d all tied and unpunched (1)	100	9024	C	1934 Probate 3 Page Legal Document with QV Long Types £8 & £200 plus Arms £30 (2) all tied and perfined (1)	50
9005	C	1919 Probate 3 Page Legal Document with QV 6/-, 10/- & £100 plus KGV 9d all unpunched and tied (1)	50	9025	C	1935 Probate 11 Page Legal Document with QV Gold £10,500 value tied and perfined. The stamp has a slight surface fault (1)	250
9006	C	1921 Order to Administer Legal Document with QV Long Types 9/-,£9,£10 & £50 all unpunched and tied (1)	50	9026	C	1935 Probate 2 Page Legal Document with QV Long Types £3.10s & £40 (7mm) values tied and perfined (1)	25
9007	C	1921 Probate 5 Page legal Document with QV Long Types 4/-, £4.10s, £35 & £200 plus KGV 3d Surface & 4d Recess values all unpunched and tied (1)	150	9027	C	1935 Probate 4 Page Legal Document with Arms 7/6, £2(2), £30 & £100 values tied and perfined (1)	50
9008	C	1922 Memorandum of Agreement with QV £4 Blue Long Type and Fine Paid values both tied by Stamp Duties Dept/Wellington cancel (1)	50	9028	C	1935 Probate 4 Page Legal Document with QV Long Types 30/-, £50 & £500 plus Arms 6/-, £30 & £100 values all tied and perfined (1)	100
9009	C	1922 Probate 6 Page Legal Document with QV Long Types 7/-, £7 Maroon, £20 & £100 plus KGV 9d all tied and unpunched (1)	100	9029	C	1936 Probate 8 Page Legal Document with QV Long Types £25, £800 plus Arms 10/-, £8, £30(2), £40, £100 plus 1935 5d Pictorials all tied and perfined (1)	600
9010	C	1923/24 Probate 4 Page Legal Document with QV Long Types 5/-, 10/-, 30/-, £5, £15, £30, £500(2), Gold QV £8,932 plus KEVII 5d(3) & KGV 6d values all tied and perfined. Light ageing on several stamps. (1)	500	9030	C	1937 Probate 3 Page Legal Document with QV £600 Long Type plus Arms 7/-, £2 & £30(2) all tied and perfined (1)	350
9011	C	1924 Order to Administer with QV Long Types 10/-, £20,£200 & KEVII 5d Pair all tied and perfined (1)	40	9031	C	1937 Probate 5 Page Legal Document with QV Long Type £20 & £300 plus Arms 1/3, 12'6 & £7 tied and perfined (1)	150
9012	C	1925 Probate 3 Page Legal Document with QV Long Types 9/-,30/- & £40 plus KGV 4d values all unpunched and tied (1)	50	9032	C	1938 Probate 2 Page Legal Document with Arms 5/-, £2 & £400 plus 1935 5d Pictorial all tied and perfined (1)	60
9013	C	1926 Probate 8 Page Legal Document with QV Long Types 7/-(2), £1, £3 & £40 plus KGV 4d,6d,1/- plus 1d Dominion values all tied and perfined (1)	30	9033	C	1938/40 Probate 6 Page Legal Document with Arms Gold £5000 plus Arms 7/- & £2.10s and 1940 2d Centennial all tied and perfined (1)	600
9014	C	1927 Probate 4 Page Legal Document with QV Long Types 5/-, 12'6, £3, £9 & £45 plus KGV 4d & 1/- plus 1d FM all tied and perfined (1)	50	9034	C	1939 Probate 2 Page Legal Document with Arms 7/-, £8 & £45 Overprints plus 1935 9d & 1/- Pictorials & KGVI 1d Red all tied and perfined (1)	50
9015	C	1928 Probate 3 Page Legal Document with QV Long Types £4.10s(2), £45, £300 plus KGV 4d,9d,1/- values all tied and perfined (1)	75	9035	C	1940 3 Page Probate Legal Document with Arms 1'3, 4/-, 10/-, £2, £10 unpunched; also Arms £40, £50 & £700 Overprints and 1935 4d,5d,8d Pictorials and 1940 6d Centennial values all tied and perfined (1)	400
9016	C	1928 Probate 4 Page Legal Document with QV Long Types 8/-,£4 & £50 plus KGV 3d Surface & 1/- Recess all tied and perfined (1)	25	9036	C	1940 Probate 2 Page Legal Document with Arms 12'6 Plum, £9 Red & £40 Overprints plus 1940 2d Centennial values all tied and perfined (1)	80
9017	U	1928 Probate 6 Page Legal Document with QV Long Types 15/-, £4.10s, £7, £15 & £400 plus KGV 4d,5d,6d,1/- values all tied and perfined (1)	100	9037	C	1940 Probate 2 Page Legal Document with Arms 8/-, £2.10s & £45 Overprint plus 1935 4d Pictorial all tied and perfined (1)	50
9018	C	1930 Probate 3 Page Legal Document with QV Long Types 8/-,£30,£50 plus KGV 5d & 6d values all tied and perfined (1)	30	9038	C	1941 Probate 2 Page Legal Document with Arms 1'3, 6/-, £1(2), £10 & £800 Overprint plus 1935 4d Pictorial all tied and perfined (1)	400
9019	C	1932 Probate 3 Page Legal Document with QV Long Types £8 & £40 plus Arms 7'6 & 10/- all tied and perfined (1)	40	9039	C	1941 Probate 3 Page Legal Document with Arms 11/- & £40 Overprints tied and perfined (1)	25
9020	C	1932 Probate 8 Page Legal Document with QV Long Types £45(2), £900, £1000(2) plus Arms £1, KGV 8d Brown & 1/- values all tied and perfined (1)	800	9040	C	1941 Probate 3 Page Legal Document with Arms 4/-, 7/-, 12'6, £4, £30, £35 plus £50 Overprint plus KGVI 1d & 3d values all tied and perfined (1)	150
				9041	C	1941 Probate 4 Page Legal Document with Arms 8/-, 30/-, £30(4), £1000 plus 5/6, £200, £500 Overprints plus KGVI 1d Red & '40 3d Centennial values all tied and perfined (1)	300

LOT		PRICE	LOT		PRICE
9042	C 1944 Probate 2 Page Legal Document with Arms £4.10s, £100, plus £45,£800,£900 Overprints plus 1935 2d Pictorial all tied and perfined. Nice item (1)	800	9059	C 1933 (6AP) Registered Printed 'Auckland and Suburban Drainage Board' Cover with 4d Violet tied by Auckland East cds to USA. Backstamped San Francisco & Berkeley Registered cancels. (1)	50
9043	C 1944/45 Probate 4 Page Legal Document with Arms 12/6, £2, £2.10s, £100, £400, £1000(2) plus £15, £50, £200, £300 Overprints plus 1935 2d & 3/- Pictorials all tied and perfined. Nice item (1)	325	1935 PICTORIAL COVERS		
9044	C 1945 Probate 2 Page Legal Document with Arms 6/-, 25/-, £40(2) & £45 Overprints plus 1935 6d & 2/- Pictorials & KGVI 3d all perfined and tied (1)	100	9060	C 1935 (1MY) '35 Pictorial Printed Cover with 1/- Tui Posted from Wellington to Dunedin with Express Red label. Fine (1)	200
9045	C 1945 Probate 2 Page Legal Document with Arms 6/-, 9/-(2), £4 plus £40,£45,£50 Overprints plus '35 9d Pictorials all tied and perfined (1)	75	9061	C 1938 (26AP) Dannevirke Picture Postcard with 1d Kiwi tied by Dannevirke cancel to Ireland. Fine (1)	25
9046	C 1945 Probate 3 Page with Arms Types £35 & £400 plus £50(2),£200,£300,£500(2) plus 1935 6d Pictorial all tied and perfined (1)	300	9062	C 1945 (1NO) OHMS Long Window envelope with 2d + 1d Red Meters cancelled by Government Buildings cancel. Has KGVI 3d Blue Official & '35 1/- Tui Official values added and tied by Wellington FMB cancel. (1)	200
9047	C 1947 Probate 2 Page Legal Document with Arms £3.10s & £40 Overprint plus '35 3/- Pictorial & KGVI 3d all tied and perfined (1)	50	KING VI COVERS		
NEW ZEALAND POSTAL HISTORY			9063	C 1952 (1JL) 'The Disabled Servicemen's Centre' Printed Mail Tag with KGVI 5d Grey & 3/- Brown & Grey tied by Adelaide Road cancel to Auckland. (1)	50
SECOND SIDEFACE COVERS			QE PERIOD COVERS		
9048	C 1896 (7DE) Long Cover to London To - The Waitekauri Consolidated Gold Mines Ltd with 5d Grey tied by Auckland cancel. Backstamped London Red cancel. Nice single rate cover (1)	200	9064	C 1953 (9DE) 3d & 4d Royal Visit Stamps on 2x Maxi Cards Posted at Ferry Road. Fine (2)	75
9049	C 1897 (6SP) Union Bank of Australia Cover with 1d Rose 2nd Sideface Pair P10x11 (the right-hand stamp with the Screwdriver flaw) tied by Kirwee coin cancel. Backstamped Christchurch. The cover has a horizontal crease (1)	40	9065	C 1954 (9AP) Three Arrows Printed First Day Cover Jones D54.1DA Posted at Raoul Island/Kermadec Islands. Fine (1)	75
9050	C 1899 (29DE) Cover endorsed 'Card Only' with 1/2d Black 2nd Sideface tied by Wellington cancel to Rongotea. Backstamped Feilding & Rongotea. (1)	50	9066	C 1968 OHMS/NZ Electricity Dept Registered Mail Tag endorsed 'Insured for Six Hundred and Forty Two Dollars & 68 cents'. Has '67 3c,5c(2),50c & \$1 values tied. (1)	75
9051	C 1900 (1JE) Registered Cover to England with 2 1/2d Blue & 3d Orange 2nd Sideface values tied by Christchurch cancel. Backstamped Registered/Kentish Town. Has Large 'R' Red handstamp. (1)	125	9067	C 1970 (16MR) James Cook Printed Cover with 4c '69 Cook stamp tied by 'ENDEAVOUR INLET' cancel. (1)	20
1898 PICTORIAL COVERS			9068	C 1971 (29JL) Long Cover with 1954 QE Officials & Surcharges set tied by Lower Hutt cancels. Unad-dressed (1)	75
9052	C 1898 (9JE) Bing Harris & Co Printed envelope with 2d Pembroke tied by Wellington cancel to a local address. Backstamped RPO WN-NA light cancel. (1)	40	9069	C 1971 Printed Parcel Front endorsed 'Printed Matter Books' with '70 7 1/2c Garfish tied by New Plymouth South cancel to Auckland. Scarce single rate stamp on cover (1)	50
KING EDWARD VII COVERS			9070	C 1974 QE 3c Newspaper Wrappers x2 with First Day & Last Day Commonwealth Games cancels. Samuel FF13a. Fine (2)	20
9053	C 1910 (28AU) Uprated KEVII 1/2d Green envelope with additional 2d Mauve tied by Auckland cancel to Germany. No backstamp. (1)	125	9071	C 1980 (7FE) Special Centenary Rotorua Cover with 'Rotorua Centennial Guinea' souvenir added at left to the envelope. Fine (1)	25
1D DOMINION COVERS			9072	C 1998 (14?) 40c Tory Channel 'Marlborough Sounds' Error stamp on Cover tied by Waikato Mail Ctr machine cancel to Auckland (1)	25
9054	C 1914 (4MR) Cover with 1d Dominion tied by complete 'Citizens' Fete/Dunedin' cancel to a local address. Fine & Scarce (1)	200	9073	C 2003 Universal Mail \$1.50 Cape Reinga, Cape Campbell & Cape Brett values tied on Maxicards. Fine trio (3)	30
KGVI COVERS			9074	C 2004 (18AU) Commercial Cover with 40c Lower Hutt Red Meter label plus 5c ANZ CAL stamp added and tied. (1)	40
9055	C 1921 (9DE) Registered Cover to England with 4 1/2d Green & 1920 1 1/2d Victory Posted at Westport. Backstamped Registered London. The cover lightly aged (1)	250	AIRMAIL COVERS		
9056	C 1924 (JA16) Printed Radley & Co Ltd Consignee's Letter envelope with 1/2d Green tied by Hastings machine cancel to Auckland. (1)	40	9075	C 1931 (19JA) Dominion Airlines Ltd - Hastings to Gisborne Flight Cover with altered Dominion Airlines Ltd label NZAMC #39a Signed by Bolt. Fine & Scarce (1)	200
9057	C 1930 (7JL) Karachi-London Airmail Cover with KGV 8d Brown tied by Christchurch cds to England. Nice single rate cover (1)	200	9076	C 1932 (15JL) Imperial Airways NZ/Africa Flight Cover to South Africa with 3d,4d & 7d Airs Posted at Wellington. NZAMC #80c. Has Unclaimed cacheted and Returned with 'Dead Letter Office/Wellington' receiving cancel. (1)	175
9058	C 1933 (1MR) Cover to Dodoma, Tanganyika with 1d Field Marshal tied by Auckland machine cancel. Nice destination. (1)	125	9077	C 1932 (20JA) First Flight Cover Westport/Nelson with 5d Air. Also boxed 'Loose Letter' handstamp. (1)	50

LOT		PRICE	LOT		PRICE
9078	C 1932 (28JE) Imperial Airways NZ/Africa Flight Cover to Beira, Portugese East Africa with 4d & 7d Airs plus 1d FM Posted at Gisborne. Has Unclaimed & Retour handstamps. Has Dead Letter Office Wellington backstamp. NZAMC #79b (1)	150			
9079	C 1932 (29JE) Imperial Airways NZ/Africa Flight Cover to Bulawayo, Southern Rhodesia with 5d/3d & 7d Airs tied by Auckland FMB cancels. NZAMC #79b. Fine & Scarce (1)	150			
9080	C 1932 (29JE) Imperial Airways NZ/Africa Flight Cover to Nairobi, Kenya with 4d & 7d Airs tied by Auckland FMB cancels. NZAMC 79a (1)	150			
9081	C 1933 (26MY) Hawkes Bay Flood Emergency Flight Cover - Hastings to Gisborne. Signed by A Gerrard. NZAMC #96a Fine (1)	250			
9082	C 1937 (15NO) Cygnus Imperial Airways Crash Mail Cover NZAMC #175 Posted at Kingsland to Scotland. Has violet boxed 'Damaged By Sea-Water' handstamp. Fine (1)	150			
9083	C 1939 Imperial Airways Empire Flying Boat 'Centurion' Crash Mail Cover to London. NZAMC #205 (1)	150			
	EXHIBITION COVERS				
9084	C 1926 (22AP) Printed NZ & Seven Seas International Exhibition envelope with 1/2d Green Exhibition Pair tied by 2 Good cancels to Opawa. Minor ageing (1)	50			
	LIFE INSURANCE COVERS				
9085	C 1898 (23DE) Printed NZ Government Life Insurance envelope/Head Office, Wellington. Has 1d Blue VR tied by Wellington cancel to Gisborne. Backstamped Gisborne. Minor corner blemish. (1)	250			
9086	C 1905 (OC) Printed NZ Government Life Head Office Wellington Printed envelope with 1d Universal tied by Wellington cancel to Tasmania. Has Hobart backstamp. The cover has minor tears at right. Nice useage of non Life Insurance stamps when other stamps could be used. (1)	500			
9087	C 1917 (23MR) Printed NZ Government Insurance Department envelope with 1d Red & 1/2d Green No VR values tied by Wellington machine cancel addressed to Porirua. Backstamped Porirua. (1)	125			
9088	C 1934 (19JL) Printed NZ Government Insurance Department/Auckland Agency Registered Cover with 1d Red & 3d Chocolate No VR values tied by Auckland Registered cancel to Ellerslie. Backstamped Ellerslie. Minor staining. (1)	250			
9089	C 1937 (10MR) Printed 'New Zealand Government Life Insurance Department' Window manilla envelope with 1d Red No VR Posted at Dunedin. Fine (1)	100			
9090	C 1976 (1OC) Mail Tag with 5x 15c Dog Island values tied by 'Christchurch/Late Fee' cancel. Has Letter & Late Fee labels. Minor creasing (1)	30			
	METER COVERS				
9091	C 1900's 1/2d & 1d Violet Postage Paid (No 14) Meter Covers Mint. Nice examples (2)	100			
9092	C 1904 (8JL) Picture Postcard with Wales 1d Meter Marking plus Dunedin Paid Squared Circle cancel to Roslyn. The card has light staining. Scarce Meter Marking (1)	500			
9093	C 1908 (JA18) Kempthorne, Prosser & Co Printed envelope with Wellington 1d/27/Postage Paid Black Meter tied by Wellington machine cancel to Hokitika. (1)	75			
				MILITARY COVERS	
			9094	C 1915 (MR25) Ceylon Stampless Postcard to NZ with fine 'NZ Military Post Office/Third Reinforcement/Expeditionary Force' violet handstamp. Fine Troopship Item (1)	200
			9095	C 1916 (19JA) Picture Postcard with 1d Dominion tied by 'TAUHERENIKAU MILITARY CAMP' cancel to Wellington. Fine (1)	75
			9096	C 1916 (26FE) Stampless 'On Active Service' Cover with fine Violet Oval 'NZ Expeditionary Force/Troopship No 43' (HMNZT Mokoia) to NZ. Has Passed Military Censor green cachet. Roughly opened at top. Scarce (1)	200
			9097	C 1916 (3MY) Cover with 1d Dominion Pair sent from Auckland addressed to 'Rifleman W P Wright, D Coy, 2nd Reinforcements, 4th Batalion, NZRB'. The cover has Unclaimed cachets incl 'Undeliverable For Reason Stated/Return to Sender BAPO' & 'Unable to Trace/BAP03' with UK Found Open label. Also 'No 1 Gen Hospital' in manuscript. Some staining. Interesting item (1)	200
			9098	C 1916 (OC31) Grey Towers, Hornchurch, Essex, Headquarters New Zealand Expeditionary Force Base Depot Real Photo Stampless with 'NZEFLondon/Records Office' cancel. Scarce WW1 cancel (1)	200
			9099	C 1919 (24AP) Stampless OAS envelope with 'NZ Base Depot PO' cancel addressed to Ashburton, NZ. Backstamped Ashburton. The cover has a minor tear at left. Late Useage of this marking. Very Scarce (1)	200
			9100	C 1940's Stampless Cover with Red Boxed 'On Active Service' cachet plus Red Boxed 'Passed By Naval Censor/No 3 (New Zealand)' Shipmail Marking. Used by HMNZS Leadander to NZ. The cover roughly opened at top with light ageing (1)	75
			9101	C 1942 (28MY) Commercial Censored Cover with '35 2d Pictorial Pair & KGV1 1d Green Posted from Wellington to Corporal JR McKay, Wellington Company, 19th Rifle Battalion, NZ Expeditionary Forces, 1st Eschelon, Middle East. Has large 'MISSING' & 'Prisoner of War' violet cachets. (1)	150
			9102	C 1943 (9AU) Stampless Cover addressed 'To the Public Trust Office, Wellington' with boxed 'Exempt from postage under/International Convention/regarding Treatment of/Prisoners of War' violet cachet. Censor DDA 3 Octagonal cachet at left. Has large 'INTERNMENT CAMP/PAHIATUA' violet backstamp. Fine & Scarce (1)	450
			9103	C 1944 Christmas Pictorial Airgraph to NZ. The Airgraph shows a map of the Mediterranean. (1)	50
			9104	C 1945 (16MR) Stampless 'On Active Service' to NZ with Handdrawn Pacific Islands Illustration (made by MF Christensen) with RNZAF/NZAPO B (New Hebrides). Boxed Censor cachet. (1)	150
				MISCELLANEOUS	
			9105	C 1902 Inwards Registered Cover from Transvaal to Mt Eden damaged and has 2x New Zealand Officially Sealed labels at left. (1)	75
			9106	C 1908 Inwards Picture Postcard from South Melbourne/Victoria to NZ with a fine 'Christchurch/Official Paid' cancel at left. Fine & Scarce (1)	125
			9107	C 1910's Picture Postcard bearing Unused KEVII 1/2d Green plus a black 'Posted In/The Missions/To Seamen/Wellington NZ' cachet. (1)	250

LOT			PRICE	LOT			PRICE
9108	C	1910's Printed Acknowledgement of Delivery Env No 65 Cover Registered at Blenheim to a local address. Minor ageing (1)	75				
9109	C	1925 (20OC) Printed 'Advice of Delivery' PO 1/30,000/5/22-5855 Card Posted at Mokai to Henderson. Minor faults (1)	150				
9110	C	1930's Souvenir Folder of Thames with various b&w photos. Fine (1)	50				
9111	U	1936 (7OC) 'Empire Conference/Wellington/Chambers of Commerce' cancel on Printed Registration Receipt with Wellington Town Hall in a Joined Strip of 4 labels. Fine & Scarce (4)	40				
9112	C	1942 Cover with '36 1/2d Chamber of Commerce, 1940 1/2d Centennial & 1941 1d Health tied by Auckland machine cancel. Has an endorsement at left 'Per Carrier/Pidgeon'. Minor ageing (1)	50				
9113	C	1949 (9MR) 2/6 New Zealand Postal Note with Te Hapara issuing Office. No counterfoil. Some creasing and folding (1)	30				
9114	C	1979 (17JL) Shipping Corporation of NZ Ltd 10c Meter Commercial Cover. Has boxed Red 'Damaged at Auckland..' boxed cachet. Soiled (1)	25				
9115	C	1980's Wellington Hospital Parcel Post Mail Tags in a Vertical Strip of 3 attached. Fine item (3)	30				
		OFFICIAL COVERS					
9116	C	1894 (22MR) Long OPSO envelope with 'Magistrate's Court/Picton cachet at bottom left. Posted at Picton to Blenheim. Fine (1)	75				
9117	C	1918 (18FE) OHMS Education Department Printed Window Manilla envelope (5,000/12/16 - 18877) with KGV 1 1/2d Black Surface tied by Wellington machine cancel. (1)	50				
9118	C	1942 (21JL) Long OHMS/New Zealand Post and Telegraph Dept envelope with KGVI 1d Red Official tied by Wellington machine cancel. Has Passed By Censor/90 cachet. (1)	40				
		POSTAGE DUES					
9119	C	1939 (16OC) Arthur Yates & Co Ltd Printed envelope with KGVI 1d Green Posted at Otaki to Auckland. Has 1d & 3d(3) 3rd Type Dues plus 1/- '35 Pictorial showing a Combination of 1935 Pictorial & Postage Dues. Fine & Scarce Usage (1)	300				
9120	C	1939 (22NO) Whale's Optical Service/Business Reply Card with 1/2d & 1d 3rd Type Postage Dues tied (1)	50				
		POSTAL FISCALS					
9121	C	1940 (3SP) Long 'Trans Pacific Air Mail' Cover to USA with 4/- Arms Pair Posted at Dunedin. Has 'Passed By Censor No 22' cachet at right. Kempthorne Prosser Printed envelope. (1)	250				
9122	C	1941 (19JL) Censored Clipper Airmail Cover to London with 9d Pictorial & 5/- Arms Posted at Wellington. Censor No 115 cachet (1)	75				
9123	C	1943 (FE11) Airmail Censored Cover to England with Arms 2/6 Brown tied by Rotorua machine cancel addressed to Sir Harry Luke, C/- The Colonial Office, Downing St, London. Includes the contents. (1)	125				
9124	C	1949 (8NO) Uprated KGVI 6d Red Cover with 4/- Arms & 4d KGVI values Posted at Hastings to Belgium. (1)	100				
9125	C	1978 (25JU) Registered Cover with Arms \$4 plus 20c '78 Agriculture Posted at Coromandel. Backstamped STABIO/SWITZERLAND. (1)	50				
					RAILWAY COVERS		
				9126	C	1881 (12AP) QV 1d Brown Printed Postcard Posted at Kaitangata to Lawrence with a receiving cancel. Backstamped RTPO (DS) (1)	40
				9127	C	1891 (OC19) Inwards Printed QV 1d Postcard to NZ Posted from Brisbane. Has RPO-C 3 NO 91 receiving cancel. Backstamped Invercargill. (1)	30
				9128	C	1902 (10OC) Inwards Picture Postcard with QV 1 1/2d tied by Williamstown to NZ. Has Trave PO New Plymouth, Patea, Hawera & Whakamara cancels. (1)	50
				9129	C	1907 (3AP) Picture Postcard with 1d Universal tied by Trav PO Auckland fine cancel to Palmerston North. Minor corner crease (1)	40
				9130	C	1908 (22SP) Picture Postcard with 1d Universal Pair tied by a fine 'Trav PO New Plymouth' cancel to Auckland. (1)	40
				9131	C	1909 (11SP) KEVII 1d Printed envelope cancelled at Stratford addressed to 'The Stationmaster, Thorndon Station, Wellington'. Backstamped Travelling PO Taranaki Out cancel. Fine Item (1)	75
				9132	C	1914 (6AP) NZ Railways Printed Privilege-Ticket Order Coupon with 'Workshop Foreman's Office/Napier cancel for trip between Napier-Hastings. (1)	25
				9133	C	1929 (28AU) KGV 1d Green Printed Postcard Posted at Helensville to Henderson. The card endorsed at top left 'Posted at Te Hana/Flag Station'. Also has 'LOOSE LETTER' black handstamp. The card has a vertical crease. Also has two punchholes at top. (1)	75
				9134	C	1935 (14JA) Unaddressed Cover with 1d FM tied by a fine 'ROYAL TRAIN' cancel. (1)	250
				9135	C	1936 (7OC) Cover with '35 1d Kiwi Posted at Greymouth to Christchurch. Has 'Matai Flag Station' endorsement at top left. Also part LOOSE LETTER handstamp. (1)	175
				9136	C	1936 (8AU) Uprated 1/2d on 1d FM Printed Postcards with an additional 1d Kiwi tied by Frankton Junction Rly Loose Letter cancel to Hamilton. Minor soiling (1)	50
				9137	C	1946 Cover with 'Damaged Through Immersion/In Manawatu River Railway/Accident' 3 line violet cachet. The cover has the stamp removed. (1)	350
						SHIPMAIL COVERS	
				9138	C	1926 (29AP) Honolulu Picture Postcard with 1d Dominion tied by full 'Marine Post Office/RMMS Aorangi' cancel to Auckland. (1)	75
				9139	C	1930 (29AU) Printed Matter cacheted Cover to England with KGV 1/2d Green tied by 'Marine Post Office/RMMS Aorangi' fine cancel (1)	75
				9140	C	1942 (23MY) Long Censored on Union Steam Ship Company of NZ Printed Cover sent from Auckland with 1d + 2d Red Meters to San Francisco. White censor tape at left with Passed By censor/4 violet cachet. (1)	50
						ADVERTISING COVERS	
				9141	C	1906 (MR21) Kempthorne Prosser & Co Fine Printed 'Westfield Manures' Green Cover with 1d Universal tied by Auckland machine cancel to Kamo. Fine & Scarce (1)	75
				9142	C	1936 (DE2) Printed 'Rotorua' Blue Pictorial Cover with '36 1/2d Chamber of Commerce x 2 tied by Rotorua machine cancel to Marton. Minor perf staining (1)	50
						UNCLAIMED COVERS	
				9143	C	1932 (13JL) Cover with 1d FM Posted at Dunedin to Yugoslavia and Returned with Dunedin Unclaimed & return To Sender Red cachets. (1)	50

LOT			PRICE	LOT			PRICE
9144	C	1932 (13OC) Registered Cover with 1d FM(6) & KGV 1/2d Green (2) tied by Marton cancels to a local address. Has early type registration label. Has spike-holes at top left. Has Wanganui Unclaimed, Return to Sender and Gone No Address red cachets. (1) EXPRESS DELIVERY COVERS	40	9165	U	Grey Lynn-Arch Hill (AK) 1905-39 Fine J Class 24 JL 31 on 2d KGV piece. Nice cancel (1)	25
9145	C	1937 (23NO) Express Cover with 6d Fernleaves & 1d Kiwi tied by Palmerston North Delivery cancel to Napier. Has Red Express label at top left. Fine (1)	200	9166	U	Hellensville (AK) 1863- A coin 26 MR 93 fine cancel on 2d 2nd Sideface (1)	25
9146	C	1947 (29JA) Demonitised 6d Express Car Un-cancelled on Cover with Royal Oak cancel at left addressed to Onehunga. Has in Manuscript 'Tax 4d'. Minor staining (1) REGISTERED COVERS	50	9167	U	Hoteo (AK) 1908-52 A coin 4 NO 35 complete cancel on 1935 1/2d Pictorial with the cancel cut around (1)	20
9147	C	1967 (25JL) Printed OHMS A/R Long Cover with 4/3 Meter Mark Posted at Whangarei to Waitara. Has 'AR' violet cachet (1)	50	9168	U	Kokako (AK) 1913-29 J Class 27 AU 28 Good cancel on KGV 1/2d Pair. Late date. Rated 8 Scarce (2)	75
NEW ZEALAND POSTAL STATIONERY				9169	U	Kopuku (AK) 1913-49 J25 21 DE 31 cancel on KGV 2d good cancel with the cancel cut around (1)	40
POSTCARDS				9170	U	Makarau (AK) 1881-39 Fine A coin 8 DE 31 on KGV 2d piece (1)	20
9148	C	1890's 1/2d Austin Walsh Postcard Samuel AW1a Used with a little ageing. Scarce (1) REGISTERED ENVELOPES	125	9171	U	Mangare (AK) 1878-97 A coin Part 2 AP 95 cancel. Missing last letter 'E' (1)	50
9149	C	1940 (3SP) Uprated 4d Mitre Peak with 2d 1940 Centennial Posted at Foxton to Wellington. (1)	50	9172	U	Mangere Air Force (AK) J Class Part strike 6 OC 44 on piece with some missing letters at the base. Rate 9. Very Scarce (1)	50
NEW ZEALAND POSTMARKS				9173	U	Mullet Point (AK) 1877-1946 A coin 29 DE 25 good cancel on KGV 6d Pair (2)	20
AUCKLAND				9174	U	Murray's Bay (AK) 1939-54 J Class 19 FE 49 complete on KGV 1d Green with the cancel cut around. (1)	30
9150	U	Akaaka (AK) 1902-24 A coin good cancel 15 MR 23 on 1d Dominion (1)	40	9175	U	Narrow Neck Military Camp (AK) 1940-46 J Class complete 19 OC 42 on KGV 3d Blue on piece (1)	40
9151	U	Ararimu (AK) 1907-29 B Class 16 MY 25 nearly complete strike with a light day date on piece (1)	40	9176	U	North Head Military Camp (AK) 1940-44 J Class 30 NO 43 complete on 1935 2d Pictorial with odd light letter. Rated 8. Scarce (1)	50
9152	U	Ararimu South (AK) 1888-1907 A coin 17 SP 00 slightly overinked cancel on 2d 2nd Sideface. Rated 8. Scarce (1)	75	9177	U	Oneroa (AK) 1897-1933 A coin 21 SP 3? nearly complete cancel on KGV 2d on piece (1)	25
9153	U	Ardmore (AK) 1885-1912 A coin 26 JE 06 complete on piece (1)	50	9178	U	Opaheke (AK) 1912-376 H Class (English) 14 OC 35 cancel complete on 1935 1/2d Pictorial. (1)	20
9154	U	Auckland South Central (AK) 1909-20 C Class PAID 17 AU 12 cancel not complete on KEVII 4d Yellow Pair (2)	50	9179	C	Oratia (AK) 1905-1989 F Class (Squared) 11 De 12 complete cancel on KEVII 1d Blue cutout. (1)	30
9155	U	Avondale South (AK) 1936-44 Complete J Class 24 NO 37 on 1935 1/2d Pictorial with the cancel cut around (1)	20	9180	U	Parakakau (AK) 1870-1937 A coin 22 NO 35 a little overinked cancel on 1935 1/2d Pictorial (1)	20
9156	U	Big Omaha (AK) 1901-39 A coin 4 OC 35 complete and slight overinked on 1935 1/2d Pictorial with the cancel cut around (1)	40	9181	U	Paremoremo (AK) 1919-39 J Class 13 FE 36 overinked cancel on 1d 1935 Pictorial. Rated 8. Scarce (1)	75
9157	U	Brookby (AK) 1884-1923 A coin fair cancel 30 NO 94 light in parts (1)	40	9182	U	Pine Island (AK) 1948-50 J Class 27 FE 50 complete on KGV 1/2d Brown piece. Rated 10. Very Scarce (1)	100
9158	U	Chelsea (AK) 1885-1931 A coin 20 DE 24 Fair/Good strike not complete on 1d Map (1)	25	9183	U	Port Albert Central (AK) 1929-37 J Class complete 13 DE 33 cancel on 1d FM piece with the cancel cut around (1)	40
9159	U	Clevedon South (AK) 1911-50 J Class 27 SP 35 slight overinking on 1935 1/2d Pictorial with the cancel cut around (1)	10	9184	U	Puni (AK) 1885-1927 A coin 22 DE 26 Good cancel on 1d Dominion (1)	20
9160	U	Dairy Flat (AK) 1870-1950 J Class 14 OC 37 fine cancel on 1935 1d Pictorial on piece (1)	20	9185	U	Rawerawe (TH) 1911-17 J Class ? DE 16 Fair cancel on KGV 1 1/2d Black on piece. Rated 9. Very Scarce (1)	150
9161	U	Eastern Bush (AK) 1944-49 Complete J Class 10 MR 49 on KGV 1d Green with the cancel cut around (1)	20	9186	U	Razorback (AK) 1879-1931 Part J Class 15 JE 31 on 2d KGV with some part letters on the stamp. Rated 9. Very Scarce (1)	100
9162	U	Edendale North (AK) 1925-30 J Class 23 DE 29 Fair/Good strike on KGV 1/2d Green pair on piece. Slight overinking (2)	40	9187	U	Remuera Air Force (AK) 1944-46 J Class complete 31 JA 46 on KGV 1d Green & 1935 2d Pictorial on piece (2)	50
9163	U	Glenbrook Steel Mill (AK) 1967-69 J Class First Day cancel on 1967 2 1/2c Pictorial (1)	10	9188	U	Remuera Camp (AK) 1946-46 J Class 23 JL 46 complete on 1935 2d Pictorial with the cancel cut around. Rated 9. Very Scarce (1)	100
9164	U	Greenwoods Corner (AK) 1915-89 J Class 12 SP 17 on 1d Dominion piece. Light strike (1)	50	9189	U	Strand Arcade Auckland (AK) 1900-09 B Class 1 NO 07 good cancel on 1898 1/- Pictorial (1)	30
				9190	U	Streamlands (AK) 1904-25 F Class (Squared) 2x Part 12 AU 22 cancels on 1920 1d Victory Pair. Some light letters. (2)	25
				9191	U	Taitimu (AK) 1909-60 J Class complete 29 MR 46 cancel on 1935 2d Pictorial (1)	20
				9192	U	Tauhoa (AK) 1874-1944 A coin 15 NO 30 2x good cancels on 1d FM Block of 4 (4)	20

LOT			PRICE	LOT			PRICE
9193	U	Tawharanui (AK) 1904-41 H Class (English) 15 NO 35 cancel on 1935 1/2d Pictorial. Odd light letters with the cancel cut around (1)	40	9221	U	Tererenga (TH) 1910-37 H Class (English) 19 SP 31 slight overinked cancel on KGV 2d piece with the cancel cut around (1)	50
9194	U	Te Kohanga (AK) 1924-46 J Class 29 OC 35 complete on 1935 1/2d Pictorial with the cancel cut around. (1)	40	9222	U	Thames (TH) A small collection of different cancels from Coin to J Class on small sheets - 17 different cancels (17)	50
9195	U	Tomarata (AK) 1913-37 Part J Class 28 AP 1? on 1d Dominion. TOMARA(TA) Rated 9. Very Scarce (1)	100	9223	U	Thames North (TH) 1944-60 J Class Complete 13 SP 54 cancel on KGV 1 1/2d Brown (1)	10
9196	U	Topuni (AK) 1926-46 Fine J Class 9 DE 31 on KGV 2d piece with the cancel cut around. Fine cancel (1)	40	9224	U	Tirohia (TH) 1923-38 J Class 26 OC 35 complete on 1935 1/2d Pictorial piece with the cancel cut around (1)	40
9197	U	Tuakau (AK) 1870- A coin Fine 19 FE 92 cancel on 1d 2nd Sideface piece (1)	10	9225	U	Tokatea (TH) 1872-1905 A coin 4 MY 96 good cancel on 1d 2nd Sideface. Rated 8. Scarce (1)	100
9198	U	Waipipi (AK) 1884-1940 A coin 24 OC 35 slight overinked cancel on 1935 1/2d Pictorial piece with the cancel cut around (1)	20	9226	U	Waiomio (TH) 1884-1928 A coin 17 DE 25 on 1d Map cutout (1)	30
9199	U	Warkworth (AK) 1870- Good A coin 14 SP 91 cancel on 1d 2nd Sideface pair (2)	10	9227	U	Whangamata (TH) 1888- A coin fine 12 MR 01 cancel on 1898 4d Pictorial (1)	10
9200	U	Wellsford (AK) 1874- A coin 11 MR 92 good cancel on 2d 2nd Sideface (1)	10	9228	U	Wharekawa (TH) 1898-1917 Fine A coin 19 FE 01 cancel on 1900 1d Pictorial (1)	40
9201	U	Whangapara (AK) 1910-43 H Class (English) 27 AP 35 complete cancel on KGV 1/2d with the cancel cut around (1)	20	9229	U	Wharepoa (TH) 1917-47 J Class 27 No 41 nearly complete on 1935 2d Pictorial (1)	20
9202	U	Whangarata (AK) 1893-1928 A coin 23 AU 23 over-inked cancel on KGV 1 1/2d Orange-Brown on piece (1)	20	TAURANGA			
9203	U	Wiri (AK) 1908-40 G Class 15 SP 31 slightly smudged cancel on KGV 2d piece with the cancel cut around (1)	20	9230	U	Aongatete (TG) 1881-1939 A coin 5 JL 19 a little over-inked cancel on KGV 1 1/2d orange-Brown (1)	30
9204	U	Woodhill (AK) 1894-40 A coin fine 30 NO 31 cancel on KGV 2d piece with the cancel cut around (1)	20	9231	U	Omanawa Falls (TG) 1911-48 B coin 12 DE 31 complete cancel on KGV 2d piece with the cancel cut around (1)	40
THAMES				9232	U	Pongakawa (TG) 1891-1926 A coin 2 JL 01 slight overinked cancel on 1900 1d Pictorial (1)	20
9205	U	Cabbage Bay (TH) 1883-1922 C Class 23 DE 18 complete cancel on KGV 1 1/2d Orange-Brown piece (1)	30	9233	U	Tauranga (TG) 1857- Fine Obliterator 'TH19' cancel on 1d 2nd Sideface Pair. (2)	50
9206	U	Coromandel (TH) 1882- A coin fine 18 AP 96 cancel on 1d 2nd Sideface Pair (2)	10	9234	U	Te Puna (TG) 1907-88 A coin 6 OC 24 slight overinked cancel on KGV 1d cutout (1)	10
9207	U	Driving Creek (TH) 1870-1931 J Class 10 MR 31 on piece (1)	50	9235	U	Whakamarama (TG) 1927-45 J Class complete 18 NO 35 on piece with the cancel cut around (1)	40
9208	U	Kopu (TH) 1893-1973 A coin 2 OC 98 on 1898 2 1/2d Pictorial (1)	10	HAMILTON			
9209	U	Kuaotunu (TH) 1980-1950 A coin 21 MY 92 good cancel on 2d 2nd Sideface (1)	20	9236	U	Alexandra (HN) 1864-96 Part early FE 25 68 cancel on Perforated 6d Brown Full Face Queen. ALEXAN(DRIA) (1)	50
9210	U	Manawaru (TH) 1898-1908 A coin 24 AP 08 Fair/Good cancel on 1900 1/2d Pictorial on piece (1)	25	9237	U	Aramiro (HN) 1928-55 J Class 4 NO 35 on 1935 1/2d Pictorial piece with the cancel cut around (1)	10
9211	U	Maratoto (TH) 1897-1911 Fair A coin 15 DE 99 2x part cancels on 1d 2nd Sideface Pair. Light in parts. Rated 8 Scarce (2)	75	9238	U	Arohena (HN) 1939-46 J Class 3 AU 40 complete on 1936 1d Chamber of Commerce with the cancel cut around (1)	50
9212	U	Matatoki (TH) 1905-53 J Class 15 MY 42 complete on 1935 2d Pictorial with the cancel cut around (1)	30	9239	U	Cambridge (HN) Small Collection on sheets with A coin (4x different cancels), F Class (Squared), C Class (3) & J Class (4) all different. Nice lot (12)	50
9213	U	Miranda (TH) 1879-1936 J Class complete 7 DE 35 on 1935 1/2d Pictorial piece with the cancel cut around (1)	50	9240	U	Cambridge West (HN) 1898-1909 A coin 22 FE 09 on overinked KEVII 1d cutout (1)	20
9214	U	Netherton (TH) 1885-1949 A coin 13 NO 93 a little overinked cancel on 1d 2nd Sideface Pair (2)	30	9241	U	Five Cross Roads (HN) 1958-66 Fine J Class 24 JL 59 on QE 1d piece (1)	10
9215	U	Omahu (TH) 1899-1947 H Class (English) 2 AP 36 on 1935 1/2d Pictorial piece with the cancel cut around (1)	10	9242	U	Frankton Junction A coin, H Class, F Class, C Class & J Class (3 different); Frankton Junction Railway H Class, J Class (4x different) and Loose Letter C Class; Frankton J Class (2x different) & Mail Branch cancels. Nice lot (16)	75
9216	U	Papamoa (TG) 1910-29 Fair F Class (Squared) 23 NO 20 on 1920 1d Victory. Light cancel (1)	30	9243	U	Frankton Junction West (HN) 1948-52 J Class complete 22 AP 52 on KGV 1 2d on piece (1)	20
9217	U	Port Charles (TH) 1893-1953 Complete J Class 21 MY 49 on KGV 1d Green on piece (1)	40	9244	U	Hamilton North (HN) 1921-40 J Class 3x cancels on KGV 2d Strip of 3 dated 8 SP 31. (3)	20
9218	U	Shaftesbury (TH) 1883-1920 Part A coin 6 ? ? with the full name but missing most of the dates on 6d 2nd Sideface. Rated 8. Scarce (1)	50	9245	U	Hangatiki (HN) 1905-15 Fair F Class (Squared) 25 AU 07 on 1d Universal (1)	40
9219	U	Te Aroha (TH) 1880- Obliterator 'TS14' cancel on 4d 2nd Sideface (1)	50	9246	U	Hauturu (HN) 1911-65 H Class (English) 17 NO 31 fine cancel on KGV 2d piece (1)	25
9220	U	Te Aroha West (TH) 1918-22 B Class 20 MY 22 light part cancel on 1920 2d Victory Overprint (1)	25				

LOT			PRICE	LOT			PRICE
9247	U	Kaihere (HN) 1915-43 J25 28 FE 23 cancel on KGV 1 1/2d Orange-Brown piece. Slight overinking (1)	25	9278	U	Piako (HN) 1882-1917 A coin 27 AU 9? on 1/2d 2nd Sideface. (1)	30
9248	U	Kakepuku (HN) 1906-11 A coin Fair 23 MR 05 cancel on piece. A few letters light. Rated 8. Scarce (1)	75	9279	U	Pukemiro Junction (HN) 1923-66 J Class complete 17 De 31 on KGV 2d piece with the cancel cut around (1)	10
9249	U	Kaputuhi (HN) 1909-11 Part J Class dated ? ? 12 on 1d Dominion. (KAP)UTUHI. Rated 10. Rare (1)	100	9280	U	Puketurua (HN) 1913-28 J Class 13 MR 25 Fair/Good strike on piece (1)	40
9250	U	Karamu (HN) 1889-1929 A coin 13 JE 00 on 1900 1d Pictorial Pair. Good cancel (2)	40	9281	U	Roto (HN) 1910-44 J Class 21 OC 35 on 1935 1/2d Pictorial piece with the cancel cut around (1)	30
9251	U	Kiokio (HN) 1906-27 Fine F Class (Squared) 22 DE 26 on 1d Dominion piece (1)	30	9282	U	Rotongaro (HN) 1913-39 J Class 25 OC 35 complete on 1935 1/2d Pictorial with the cancel cut around (1)	30
9252	U	Kirikau (HN) 1911-37 J Class complete 8 NO 35 on 1935 1/2d Pictorial piece with the cancel cut around. Rated 8 Scarce (1)	75	9283	U	Ruawaro (HN) 1908-39 G Class complete 2 OC 35 on piece with the cancel cut around (1)	25
9253	U	Koiro (HN) 1914-37 J Class complete 7 NO 35 on 1935 1/2d Pictorial piece with the cancel cut around (1)	40	9284	U	Seaward Downs (IN) 1891-1949 A coin 9 SP 30 Fair/Good cancel on 1d FM piece (1)	10
9254	U	Lichfield (HN) 1884-1936 A coin 16 NO 31 on 2d KGV piece with the cancel cut around. (1)	20	9285	U	Tangitu (HN) 1910-28 J Class part cancel 7 FE 19 on KGV 1 1/2d Orange-brown. Rated 8. Scarce (1)	75
9255	U	Mabel School (IN) 1913-53 J Class 31 JA 30 good cancel on 1929 1d Nurse with the cancel cut around (1)	20	9286	U	Tatu (HN) 1920-56 F Class (Squared) 19 DE 39 cancel on KGV 1d Red on piece (1)	20
9256	U	Mairoa (HN) 1910-58 A coin 30 OC 34 complete on 1d FM piece with the cancel cut around (1)	20	9287	U	Te Awamutu Air Force (HN) 1944-48 J Class 9 AU 43 complete on KGV 1/2d Brown piece (1)	30
9257	U	Mangakino Camp No 1 (HN) 1947-50 Complete J Class 15 MR 49 on KGV 1d Green with the cancel cut around. Rated 8. Scarce (1)	50	9288	U	Te Miro (HN) 1919-35 J Class complete 25 OC 35 on 1935 1/2d Pictorial on piece with the cancel cut around (1)	40
9258	U	Mangatapu (HN) 1912-35 C Class 17 AU 20 on 2d KGV. Missing the last letter 'U' (1)	40	9289	U	Te Rawa (HN) 1911-70 J Class 18 NO 13 on 1d Dominion piece (1)	10
9259	U	Maniakaroa (HN) 1947-50 J Class 22 FE 49 complete on KGV 1d Green piece with the cancel cut around (1)	40	9290	U	The Narrows Air Force (HN) 1943-46 J Class 28 JL 44 on 1935 2d(2) Pictorial piece (2)	40
9260	U	Matapuna (HN) 1906-19 A coin 7 JE 13 Fair/Good cancel on 1d Dominion (1)	30	9291	U	Waimai (HN) 1895-21 A coin 12 DE 08 Light strike on 1d Universal piece (1)	30
9261	U	Matiere (HN) 1904-88 F Class (Squared) 29 MR 06 good cancel on 1898 3d (1)	20	9292	U	Waimarino (HN) 1910-26 J Class 22 FE 22 good cancel on KGV 2d cutout (1)	50
9262	U	Newcastle (HN) 1864-78 Obliterator 'A over 39' on 1d Blue QV Postal Fiscal. (1)	50	9293	U	Wairangi (HN) 1886-97 Light A coin 27 MY 96 cancel on 1d 2nd Sideface (2)	40
9263	U	Newstead (HN) 1894-1937 A coin 11 AU 26 on 1d Dominion (1)	20	9294	U	Waitetuna (HN) 1881-42 J Class 30 MY 33 good cancel complete on 1d FM piece (1)	20
9264	U	Ngaroto (HN) 1880-1917 A coin 21 SP 96 on 1d 2nd Sideface Lightish cancel (1)	30	9295	U	Whangamarino (HN) 1899-52 Complete J Class 28 NO 39 cancel on 1d FM Pair piece (2)	20
9265	U	Ngaruawahia (HN) 1878- A coin 17 MY 99 on slightly damaged 1d 2nd Sideface (1)	10	9296	U	Wharepuhunga (HN) 1911-30 Part J Class 27 JL 27 on 1d FM piece. WHAREPUHU(NGA) (1)	40
9266	U	Ngatamahine (HN) 1934-47 J Class 23 JA 35 on 1d FM piece overinked with the cnacel cut around (1)	20	ROTORUA			
9267	U	Nihoniho (HN) 1908-56 H Class (English) 10 MR 09 Fair/Good cancel on 1d Universal piece. Early date (1)	40	9297	U	Aratiatia (RO) 1960-68 J Class 28 MR 61 complete cancel on 1960 1/2d Pictorial (1)	10
9268	U	Ohaupo (HN) 1871-1988 A coin 17 OC 96 a little over-inked cancel on 1d 2nd Sideface Pair (2)	10	9298	U	Cape Runaway (RO) 1901-88 H Class 17 NO 34 complete on 1d FM piece with the cancel cut around (1)	10
9269	U	Okete (HN) 1881-48 A coin fine 31 MY 33 cancel on 1d FM piece (1)	20	9299	U	Kopuriki (RO) 1913-48 J Class complete 4 DE 35 on piece with the cancel cut around (1)	25
9270	U	Okoroire Railway (HN) 1915-32 J Class complete 31 JL 30 on 1d FM piece (1)	40	9300	U	Kutarere (RO) 1906-88 F Class (Squared) 23 FE 31 cancel on 1d FM piece complete (1)	20
9271	U	Opatu (HN) 191-42 J Class 22 JE 34 on 1d FM piece with the cancel cut around (1)	20	9301	U	Lynmore (RO) 1950-53 Complete J Class 19 OC 51 on KGV 1d Green piece with the cancel cut around. (1)	10
9272	U	Oruaiwi (HN) 1917-68 A coin JE 21 18 good cancel on KGV 1/2d Green (1)	20	9302	U	Matahi (RO) 1946-51 J Class 23 FE 49 complete on KGV 1d Green with the cancel cut around (1)	40
9273	U	Otewa (HN) 1911-29 B Class 2 SP 20 on KGV 2d on piece. Rated 8. Scarce (1)	75	9303	U	Ohinemutu (RO) 1899-1905 A coin 2? DE 00 cancel on 1898 3d Pictorial (1)	10
9274	U	Owhiro (HN) 1915-55 J Class 15 OC 38 complete cancel on 1d FM piece with the cancel cut around (1)	20	9304	U	Ohiwa (RO) 1900-19 A coin 11 FE 01 a little overinked cancel on 1900 1d Pictorial (1)	40
9275	U	Paepaerahi (HN) 1936-46 J Class complete 24 NO 37 on 1935 1/2d Pictorial with the cancel cut around (1)	40	9305	U	Ongaroto (RO) 1921-36 J Class 18 NO 35 complete on 1935 1/2d Pictorial. A little overinked with the cancel cut around (1)	30
9276	U	Paterangi (HN) 1876-1917 A coin 25 JL 92 on over-inked cancel on 1d 2nd Sideface Pair (2)	30	9306	U	Oponae (RO) 1910-44 J Class 6 MR 36 complete on 1935 1d Pictorial with the cancel cut around (1)	30
9277	U	Pepepe (HN) 1893-21 A coin FE 20 09 part cancel missing the first letter 'P' on 1d Universal (1)	40	9307	U	Opotiki (RO) 1862- Light Obliterator 'TH20' cancel on 1d 2nd Sideface. Scarce (1)	50

LOT			PRICE	LOT			PRICE
9308	U	Otangihaku (RO) 1913-30 J Class 27 JA 19 on part cancel on KGV 1 1/2d Orange-Brown. (OT)ANGI-HAKU (1)	40	9334	U	Pairtu (GS) 1936-41 J Class 1 DE 37 slight overinked cancel on 1935 1/2d Pictorial with the cancel cut around (1)	40
9309	U	Raukokore (RO) 1888-1940 J Class 15 JE 34 complete on 1d FM piece with the cancel cut around (1)	25	9335	U	Pehiri (GS) 1912-36 Good J Class 23 DE 35 on piece with the cancel cut around. Slight overinking. Rated 9. Very Scarce (1)	100
9310	U	Rotoma Hill (RO) 1937-40 Blackball 2 DE 37 complete cancel on 1935 1/2d Pictorial piece with the cancel cut around (1)	50	9336	U	Port Awanui (GS) 1878-1936 A coin 4 DE 94 cancel on 1d 2nd Sideface. Slight overinking (1)	20
9311	U	Rotorua (RO) Small Collection on pages incl A coin (2 different), H Class (2 different), J Class (9 different), C Class (2 different), Postmen's Branch (16)	35	9337	U	Rakauroa (GS) 1900-47 J Class 24 MR 34 complete on 1d FM piece with the cancel cut around (1)	40
9312	U	Rotorua Air Force (RO) 1942-44 J Class complete 17 NO 42 on KGV 1d Green piece with the cancel cut around (1)	30	9338	U	Rangitukia (GS) 1888-1971 A coin 19 AU 11 on 1d Dominion Pair. Slight overinking (2)	25
9313	U	Taupo (RO) Small Collection incl A coin, H Class, J Class (4x different) & C Class (2x different) (8)	30	9339	U	Ruatorea (GS) 1913-25 J Class 25 AP 19 2x cancels on KGV 1/2d Strip of 3. Nice item (3)	50
9314	U	Te Awaiti (RO) 1897-1972 A coin 15 JL 21 good cancel on KGV 2d (1)	20	9340	U	Tahuna (GS) 1906-17 Part A coin 13 OC 0? on 1d Universal. The stamp lightly aged. Rated 9. Very Scarce (1)	150
9315	U	Te Kaha (RO) 1892-1988 A coin 27 NO 99 good cancel on 1898 1d Pictorial (1)	10	9341	U	Tamarau (GS) 1915-49 J Class 26 DE 35 on piece with the cancel cut around (1)	30
9316	U	Te Pu (RO) 1908-33 A coin 26 AU 17 part cancel on 1/2d War Stamp (1)	40	9342	U	Te Karaka (GS) 1887-1992 A coin 2 AP 95 on 1d 2nd Sideface Pair (2)	10
9317	U	Toatoa (RO) 1908-66 G Class 26 JE 34 complete cancel on 1d FM on piece with the cancel cut around (1)	20	9343	U	Tokomaru Bay (GS) 1890-1992 Fine A coin 11 JE 00 on 1900 1d Pictorial Pair (2)	10
9318	U	Waitahanui (RO) 1907-11 B coin 15 JL 10 complete cancel on 1d Dominion piece with the cancel cut around (1)	40	9344	U	Waikohu (GS) 1909-44 Complete J Class 1 DE 31 on KGV 2d piece with the cancel cut around (1)	40
9319	U	Whakatane (RO) A small range incl A coin (2 different incl Wakatane cancel), B coin, J Class (2 different), C Class (8 different) (13)	40	9345	U	Waimata Valley (GS) 1887-1952 B Class 17 No 31 on KGV 2d Pair on piece (2)	20
9320	U	Wharepaina (RO) 1913-52 J Class 3 AP 34 complete on 1d FM piece with the cancel cut around (1)	20	9346	U	Whangara (GS) 1928-88 A coin 2x 16 FE 34 cancels on 1d FM Block of 4. Nice cancels (4)	10
9321	U	Whenuaroa (RO) 1941-45 J Class complete 22 DE 42 on 1935 2d Pictorial Official on piece. Slight ageing (1)	50	<u>NEW PLYMOUTH</u>			
9322	U	Arakihi (GS) 1900-30 H Class (English) 5 NO 29 part cancel on 1d FM. has a blue registration line through the cancel (1)	40	9347	U	Bell Block (NU) 1871- Fine A coin 27 NO 00 cancel on 1900 1d Pictorial Pair (2)	10
9323	U	Arero (GS) 1907-64 A coin 15 SP 32 on 1d FM piece. (1)	20	9348	U	Eltham (NU) 1884- A coin Fine 29 NO 94 cancel on 1d 2nd Sideface Pair on piece (2)	10
9324	U	Gisborne (GS) Small Collection incl Coin 5 Line 1873 cancel on 6d Blue Full Face Queen damaged, Coin (5 different), B Class (2x different), F Class, G Class, J Class (3x different), C Class (6x different) plus Airmail & Registration cancels. (21)	75	9349	U	Hawera (NU) Small Collection incl A coin (5x different), B Class, F Class, G Class, C Class (3 different), J Class (3 different), Blackball cancels (15)	50
9325	U	Hautanoa (GS) 1921-70 J Class 28 FE 25 complete on 1d Map on piece. Slight overinking (1)	20	9350	U	Huinga (NU) 1921-49 J Class 22 JA 36 complete on 1935 1/2d Pictorial piece with the cancel cut around (1)	25
9326	U	Hexton (GS) 1921-72 J Class 14 DE 31 complete on KGV 2d with the cancel cut around (1)	10	9351	U	Island Cliff (OU) 1897-1927 A coin 12 DE 25 a little overinked cancel on 1d Dominion Pair (2)	30
9327	U	Horopora (GS) 1913-55 J Class 18 NO 35 complete on 1935 1/2d Pictorial on piece with the cancel cut around (1)	20	9352	U	Kaimiro (NU) 1908-38 H Class complete 9 JL 30 cancel on Early Registration label (1)	20
9328	U	Kanakanaia (GS) 1912-21 Double Circle 26 NO 19 cancel on KGV 1 1/2d Orange-Brown with some light letters 'KANA' Scarce (1)	75	9353	U	Kapuni (NU) 1889-1989 A coin 17 OC 99 cancel on 1d 2nd Sideface (1)	25
9329	U	Makauri (GS) 1904-37 F Class (Squared) 23 JE 12 on KEVII 6d (1)	25	9354	U	Kaupokonui (NU) 1899-1972 A coin 21 MR 30 complete on 1d FM piece (1)	30
9330	U	Matawhero (GS) 1893-1927 A coin 15 FE 23 on KGV 1 1/2d Orange-Brown (1)	30	9355	U	Kent Road (NU) 1899-1936 A coin 7 NO 35 complete cancel on 1935 1/2d Pictorial on piece (1)	20
9331	U	Moutohora (GS) 1951-56 Complete J Class 13 OC 51 on KGV 1d Green piece with the cancel cut around (1)	20	9356	U	Koru (NU) 1897-1946 A coin 12 FE 31 complete cancel on piece (1)	20
9332	U	Muriwai (GS) 1889-73 A coin 18 AP 08 slightly overinked on 1d Universal piece (1)	20	9357	U	Kurow (OU) 1883-1989 A coin 21 JA 97 slight overinked cancel on 1d 2nd Sideface Pair (2)	10
9333	U	Otoko (GS) 1909-50 J25 7 FE 17 cancel on 1d Dominion Pair (2)	20	9358	U	Lowgarth (NU) 1909-66 J Class 29 AU 31 complete cancel on KGV 2d on piece (1)	20
				9359	U	Mangatoki (NU) 1894-1972 A coin 9 DE 10 complete cancel on 1d Dominion piece (1)	20
				9360	U	Meremere (NU) 1896-1930 J Class 17 DE 20 a little overinked on 1920 1d Victory. The stamp has a corner fault. Rated 8. Scarce (1)	50
				9361	U	Midhurst (NU) 1879-1988 A coin complete 4 JL 94 cancel on 1d 2nd Sideface (2)	10

LOT			PRICE	LOT			PRICE
9362	U	New Plymouth (NU) Collection incl A coin (4x different), A duplex cancel, B coin (6x different), F Class (2x different), G Class, C Class (13x different), Airmail, Delivery, Postmen's Branch, Registration (2), Telegraph (2 different). Nice lot (34)	100	9388	U	Napier (NA) Small Collection with A coin (5x different), A duplex cancels (2x different), F Class (2x different), H Class (2x different), B Class (2 different), C Class (17x different), J Class, Delivery, Late Fee, Postmen's Branch (2x different), Registration (2x different), Paid cancels. Nice lot (38 items)	100
9363	U	Ngatamiro (NU) 1911-39 J Class 17 OC 35 complete on piece and the cancel cut around. Rated 8. scarce (1)	75	9389	U	New Plymouth Air Force (NU) 1940-45 J Class 8 DE 43 on 1935 2d Pictorial piece complete (1)	40
9364	U	Normanby (NU) 1876-1989 A coin 1 DE 94 complete cancel on 1d 2nd Sideface Pair (2)	10	9390	U	Otawhao (NA) 1896-16 A coin 13 OC 09 complete on 1d Dominion piece (1)	20
9365	U	Ohawe Beach (NU) 1925-30 J29 16 MR 29 cancel on 1d FM piece with slight overinking. 1st Period. Scarce (1)	30	9391	U	Pakowhai (NA) 1901-88 A coin 15 MR 26 cancel on 1d Dominion piece (1)	20
9366	U	Okoke (NU) 1925-46 J Class 29 NO 35 complete on 1935 1/2d Pictorial with the cancel cut around (1)	20	9392	U	Patangata (NA) 1859-24 Part A coin 26 AP 9? cancel on 2d 2nd Sideface (1)	20
9367	U	Opunaki (NU) 1881- A coin 5 JE 89 Fair/Good cancel on 2d 2nd Sideface (1)	50	9393	U	Patoka (NA) 1887-94 A coin Part 5 MY 9? cancel on 2d 2nd Sideface. Light in the year date. Rated 8. Scarce (1)	75
9368	U	Piako (NU) 196-40 J Class 21 OC 35 complete on 1935 1/2d Pictorial with the cancel cut around (1)	20	9394	U	Piripaua (NA) 1939-48 J Class complete on 1935 2d Pictorial with the cancel cut around (1)	30
9369	U	Pohokura (NU) 1894-1963 J Class 21 AU 31 nearly complete on 1d FM piece with the cancel cut around (1)	20	9395	U	Pohui (NA) 1895-1910 A coin 26 AU 98 light cancel on 1898 1d Pictorial Pair (2)	30
9370	U	Pukearuhe (NU) 1921-38 A coin 12 OC 35 complete on 1935 1/2d Pictorial with the cancel cut around (1)	30	9396	U	Pukahu (NA) 1900-48 H Class (English) 12 FE 35 fine cancel on KGV 1/2d KGV piece (2)	25
9371	U	Punihi Stream (NU) 1897-1900 Part A coin 9 JA 01 Missing the first letter 'P' on 1900 1d Pictorial. Light cancel. Rated 8. Scarce (1)	75	9397	U	Riddifords (NA) 1938-40 Part J Class with missing last letter 'S' and only the day date '3' showing on KGV 1d Red Official Pair. Rated 10. Rare (2)	150
9372	U	Stratford (NU) Small Collection incl A coin (3x different), B coin, F Class, C Class (5x different), Blackball (3x different) (13 items)	50	9398	U	Tamumu (NA) 1880-1917 F Class (Squared) nearly complete with 7 MY 07 cancel on 1d Universal piece. Rated 8. Scarce (1)	100
9373	U	Tangarakau (NU) 1926-64 J Class 11 SP 31 complete on KGV 2d piece (1)	20	9399	U	Tapawera (NA) 1871-1968 A coin 26 OC 99 2x cancels on 1d 2nd Sideface Pair (2)	30
9374	U	Tariki Road (NU) 1890-1902 A coin fine complete 16 MY 96 cancel on 1d 2nd Sideface piece (1)	40	9400	U	Tareha (NA) 1931-40 J Class 20 JL 34 complete on 1d FM piece with the cancel cut around (1)	30
9375	U	Te Tawa (NU) 1916-42 J Class 15 NO 35 complete on 1935 1/2d Pictorial piece with the cancel cut around (1)	30	9401	U	Turiroa (NA) 1876-1935 A coin 10 JE 31 on KGV 2d not complete (1)	20
9376	U	Tuna (NU) 1908-49 G Class 6 DE 35 complete on 1935 1/2d Pictorial with the cancel cut around (1)	20	9402	U	Waikokopu (NA) 1922-43 J Class 5 AP 38 on 1935 1/2d Pictorial Pair (2)	50
9377	U	Tututawa (NU) 1902-53 J Class 3 FE 12 complete on KEVII 1d cutout (1)	20	9403	U	Wallingford (NA) 1861-1928 A coin 10 OC 22 on 1920 1d Victory (1)	20
9378	U	Upper Kahui (NU) 1922-48 J Class 4 AP 35 complete on KGV 1/2d Green with the cancel cut around (1)	30	WANGANUI			
9379	U	Waitara (NU) 1861- Obliterator 'T4' cancel on 2d 2nd Sideface (1)	50	9404	U	Alton (WG) 1887-1988 A coin 6 MR 11 on 1d Dominion (1)	10
9380	U	Waitoitoi (NU) 1915-51 J Class 29 MY 34 complete on 1d FM piece with the cancel cut around (1)	20	9405	U	Carlton-Avenue (WG) 1917-49 J Class 16 JA 36 on 1935 1/2d Pictorial cutout (1)	10
9381	U	Wangamomona (NU) 1895-1901 A coin A? 10 97 light overinked cancel on 2d 2nd Sideface piece (1)	40	9406	U	Castlecliff (WG) 1891-1989 A coin 22 DE 00 on 1900 1d Pictorial Pair. Not quite complete (2)	20
NAPIER				9407	U	Eastown (WG) 1881-94 Part A coin 9 FE 9? a little overinked on 1d 2nd Sideface (1)	50
9382	U	Havelock North (NA) 1885- A coin complete 6 MR 00 on 1d 2nd Sideface Pair piece (2)	10	9408	U	Hawainga (WG) 1896-1904 Part A coin 8 NO 99 on 2d 1898 Pictorial. HAWAI(NGA) Rated 8. Scarce (1)	50
9383	U	Kopuawhara (NA) 1930-44 Fine J Class 1 JL 36 on 1935 1d Pictorial piece (1)	40	9409	U	Huntermville (WG) 1885-1989 Fine A coin 27 SP 97 cancel on 1d 2nd Sideface Pair (2)	20
9384	U	Kuripapango (NA) 1897-1918 A coin 21 MY 97 Fair cancel on 1d 2nd Sideface Pair. Light in several letters (2)	50	9410	U	Kaimanuka (WG) 1892-1914 Part A coin 7 MY 00 on 2d 2nd Sideface a little overinked and some letters light (1)	40
9385	U	Mahia (NA) 1871-1900 A coin 8 DE 98 light strike on 1898 2d Pictorial (1)	40	9411	U	Kauangaroa (WG) 1881-1921 A coin 2 FE 01 complete cancel on 1d 1900 Pictorial Pair (2)	20
9386	U	Makatoka (NA) 1880-92 A coin 21 FE 91 Fair cancel on 2d 2nd Sideface. Rated 8. Scarce (1)	75	9412	U	Kohi (WG) 1911-29 J Class Part 15 NO 28 cancel on 1d FM piece. Missing part of the first letter 'K'. Rated 8. Scarce (1)	75
9387	U	Marumaru (NA) 188-1927 Part A coin 20 MY 30(?) year wrong on 2d 2nd Sideface. Missing the first letter 'M' (1)	50	9413	U	Makatote (WG) 1906-09 A coin 2 FE 09 good cancel on 1907 3d Pictorial (1)	50
				9414	U	Makirikiri (WG) 1872-1979 A coin 1 DE 96 Fair/Good cancel on 1d 2nd Sideface (1)	20

LOT			PRICE	LOT			PRICE
9415	U	Moawhango (WG) 1893-1939 A coin 19 AP 02 good cancel on 1d Universal (1)	40	9440	U	Kimbolton (PM) 1899-1992 A coin 14 JA 03 good cancel on 1d Universal. Not complete (1)	10
9416	U	Ohingaiti (WG) 1894-1988 A coin 11 OC 99 good cancel not complete on 6d 2nd Sideface (1)	10	9441	U	Kiritaki (PM) 1902-28 A coin 20 AU 09 Fair cancel with odd light letters (1)	40
9417	U	Ohotu (WG) 1925-41 J Class ? JA 35 complete cancel on 1d FM piece with light date (1)	30	9442	U	Konini (PM) 1897-1948 A coin 3 AU 20 overinked cancel on 1d Dominion Pair (2)	20
9418	U	Ohutu (WG) 1913-25 C Class 26 FE 23 Fine C Class 26 FE 23 tied on KGV 1 1/2d Orange-Brown piece complete. (1)	40	9443	U	Koputarua (PM) 1889-1909 A coin 30 AP 98 Good cancel on 1d 2nd Sideface Pair piece with the cancel cut around at left. Has a light month date (2)	30
9419	U	Rangikura (WG) 1927-37 J Class 10 NO 35 on 1935 1/2d Pictorial piece with the cancel cut around. Rated 8. Scarce (1)	75	9444	U	Kumeroa (PM) 1883-1928 Fine A coin 18 JA 10 tied on 1d Universal on piece. Nice cancel (1)	30
9420	U	Rapanui (WG) 1914-21 A coin 29 AU 16 light cancel on KGV 1/2d & 1d Dominion piece. Rated 8. Scarce (1)	50	9445	U	Makino (PM) 1880-1925 A coin 12 FE 95 complete cancel on 2d 2nd Sideface. The cancel cut around (1)	20
9421	U	Reynolds (WG) 1937-40 Blackball complete cancel on 1935 1/2d Pictorial piece with the cancel cut around. Scarce (1)	50	9446	U	Mangahao (PM) 1890-1919 A coin 19 MR 03 Fair/Good cancel on 1d Universal (1)	30
9422	U	Silverhope (WG) 1894-1926 A coin 25 AU 09 on 1d Universal with a Fair/Good cancel (1)	30	9447	U	Mangahao Hydro (PM) 1920-28 J Class 3 OC 22 complete cancel on KGV 2d with the cancel cut around (1)	40
9423	U	Taoroa (WG) 1906-27 A coin 15 FE 07 on 1d Universal piece with the cancel cut around (1)	20	9448	U	Mangarimu (PM) 1908-22 A coin 14 JA 15 light part cancel on 1d Dominion. Slight overinking (1)	40
9424	U	Turangaarere (WG) 1909-26 J Class 5 FE 17 Part cancel on 1d Dominion. A little overinked (1)	40	9449	U	Marotiri (PM) 1911-34 J Class 17 FE 32 light cancel on part Registration label (1)	20
9425	U	Utika (WG) 1896-96 A coin 16 FE 99 overinked cancel on 2d 2nd Sideface (1)	30	9450	U	Matatera (PM) 1909-23 J Class 17 JA 12 on Early Registration label. Slight overinking (1)	50
9426	U	Waiaruhe (WG) 1950-53 Fine J Class 21 AP 51 on KGV 1/2d Brown piece (1)	20	9451	U	Milson Air Force (PM) 1942-43 Complete J Class 21 DE 42 on 1935 2d Pictorial piece. The cancel is cut around. Rated 9. Scarce (1)	75
9427	U	Wanganui (WG) A small Collection mounted of cancels - A coin (6,different), B Coin (2,different), G Class (3,different), C Class (5,different), Postmen's Branch (2,different), Registered (2,different) - (20 items)	50	9452	U	Pahiatua Railway (PM) 197-1908 A coin 20 JE 05 Part overinked cancel on 1898 1/- Pictorial (1)	20
PALMERSTON NORTH				9453	U	Palmerston North (PM) Small Collection mounted incl A coin (4 different), F Class (2, different), B Class, G Class, H Class (2, different), J Class (2, different), C Class (11 Different), Blackball (2 different), Delivery, Late Fee (2,different), Loose Letters (2, different), Letter Carriers, Paid, Postmen, Parcels, Private Boxes, Registered (36 items)	100
9428	U	Campbelltown (PM) 1880-96 Part A coin ? JE 92 on 1d 2nd Sideface Pair. (CA)MPBELLTOWN. Rated 8 Scarce (2)	50	9454	U	Parawanui (PM) 1867-1925 A coin complete good 2 JE 00 cancel on 1900 1d Pictorial Pair (2)	40
9429	U	Carnarvon (PM) 1877-1936 J Class 26 SP 35 complete on 1935 1/2d Pictorial piece with the cancel cut around (1)	40	9455	U	Peep-O-Day (PM) 1897-1905 A coin 16 OC 9? Part cancel on 1898 1d Pictorial Vertical Pair. Missing the last letter 'Y'. Some light lettering (1)	25
9430	U	Feilding (PM) 1874- Small Collection mounted includes A coin (4 different), B Class, F Class, J Class (7 different) & C Class (6 different) (19 items)	50	9456	U	Piripiri (PM) 1923-39 Complete J Class 15 AP 36 on 1935 1/2d Pictorial piece. The cancel is cut around (1)	40
9431	U	Feilding Rural Mail PO No 1 (PM) 1915-18 J Class overinked part strike with double struck cancel ? OC 17 on 1d Dominion. Rated 9. Very Scarce (1)	100	9457	U	Pori (PM) 1896-1904 A coin 23 JE 00 light cancel on 2d 2nd Sideface slightly damaged on left. Scarce (1)	50
9432	U	Foxton (PM) 1871- A coin 31 MR 88 on 1d 2nd Sideface (1)	10	9458	U	Rakaunui (PM) 1896-1939 A coin 6 OC 99 Fair/Good cancel with odd light letters (2)	30
9433	U	Greatford (PM) 1878-1968 J29.5 Class Good cancel on 1d FM dated 24 MY 33 (1)	20	9459	U	Raumai (PM) 1896-1931 Fine A coin 8 AU 98 cancel on 1898 2d Pictorial (1)	40
9434	U	Halcombe (PM) 1876-1988 A coin 12 SP 93 Good cancel on 1d 2nd Sideface. Not quite complete (1)	10	9460	U	Ruahine (PM) 1896-1925 A coin 17 JA 23 2x Overinked cancels on 1d Dominion Pair (2)	20
9435	U	Hamua (PM) 1896-1944 Fine A coin 7 AP 97 on 2d 2nd Sideface. Nice cancel (1)	20	9461	U	Shannon (PM) 1887-1992 A coin 1? JA 95 good cancel on 1d 2nd Sideface Pair piece (2)	10
9436	U	Himatangi (PM) 1901-27 A coin 7 SP 23 light cancel on KGV 1 1/2d Orange-Brown (1)	30	9462	U	Taonui (PM) 1885-1914 Part A coin 19 JL 01 on 1d Universal. Has the full name (1)	40
9437	U	Hokowhitu (PM) 1950-57 J Class 16 MY 51 on 1950 2d Canterbury tied on piece. Minor ageing (1)	20	9463	U	Ti-Tree Point (PM) 1896-1955 A coin 19 JA 01 nearly complete cancel on 1d 1900 Pictorial (1)	20
9438	U	Kaitawa (PM) 1889-1918 A coin 31 AU 97 good cancel on 2d 2nd Sideface. Minor fperf ault to the stamp at top (1)	40	9464	U	Tiakitahuna (PM) 1907-28 H Class (English) MY 24 21 cancel Fair/Good cancel on 1920 1/2d Victory (1)	40
9439	U	Kauwhata (PM) 1911-50 J Class 24 SP 35 complete cancel on 1935 1/2d Pictorial with the cancel cut around (1)	20	9465	U	Toi Flat (PM) 1907-23 B coin ? JE 08 Part cancel on 1900 1/2d Pictorial. Missing the first letter 'T'. Rated 9. Very Scarce (1)	100
				9466	U	Utuwai (PM) 1897-1949 H Class (English) 1 AP 31 complete cancel on piece (1)	40

LOT			PRICE	LOT			PRICE
9467	U	Waiaruru (PM) 1921-26 J Class Fair/Good 8 OC 23 cancel on KGV 1/2d Green Pair. Rated 9. Very Scarce (2)	150	9492	C	Anderson Park Air Force (WN) 1945-46 J Class 1 AP 46 on Long Peace First Day Cover with 2d value. Minor staining. Rated 8. Scarce (1)	75
9468	U	Whakaronga (PM) 1901-25 J Class 2 DE 23 2x Part cancels on 2x 1d Dominion & 3x 1/2d KGV's on piece. Rated 9. Very Scarce (5)	125	9493	U	Glenside (WN) 1928-50 J Class 9 NO 35 good cancel on 1935 1/2d Pictorial piece with the cancel cut around (1)	20
9469	U	Whetukura (PM) 1897-1919 A coin 9 DE 18 Good slight overinked cancel on KGV 1 1/2d Orange-Brown (1)	40	9494	U	Hautere Cross (WN) 1892-1924 A coin complete 15 JE 21 cancel on KGV 2d piece with the cancel cut around (1)	40
9470	U	Woodville (PM) 1876-1992 Fine A coin 11 AU 91 complete cancel on 1d 2nd Sideface Pair on piece (2)	20	9495	U	Hutt (WN) 1851-1910 Fine A coin 2 MY 95 complete cancel on 1d 2nd Sideface Pair (2)	10
<u>MASTERTON</u>				9496	U	Judgeford (WN) 1895-1916 A coin 14 MR 98 slight overinked cancel on piece (1)	50
9471	U	Carterton (MS) 1861- A small collection of different cancels mounted - A coin (2,different), F Class, B Class, C Class (8, different), J Class (2, different) and PAID cancel in Red on 1898 2 1/2d Wakitipu. (15 items)	75	9497	U	Kaitoke Camp (WN) 1946-56 Complete J Class 9 FE 49 cancel on KGV 1/2d Green piece with the cancel cut around (1)	20
9472	U	Clareville (MS) 1881-1942 A coin 5 DE 00 2x good cancels on 1900 1d Pictorial (2)	30	9498	U	Korokoro (WN) 1906-13 B Coin 12 NO 08 mostly complete cancel on 1900 1/2d Pictorial Pair. Rated 8. Scarce (1)	50
9473	U	Eketahuna (MS) 1877- A coin 30 MY 90 good cancel on 2d 2nd Sideface piece complete (1)	25	9499	U	Makara (WN) 1868-1940 A coin 29 NO 35 complete cancel on 1935 1/2d Pictorial piece with the cancel cut around (1)	20
9474	U	Hastwells (MS) 1894-1918 A coin 14 FE 01 Fair/Good cancel on 1d Universal. A few letter light (1)	40	9500	C	Mangaroa Air Force (WN) 1943-49 Health Cover with fine J Class 24 OC 46 cancel (1)	40
9475	U	Hinakura (MS) 1904-72 Complete F Class (Squared) 11 DE 35 cancel on 1935 1d Pictorial on piece (1)	10	9501	U	Mangaroa Air Force (WN) 1943-49 J Class 15 MY 43 mostly complete cancel on 1935 2d Pictorial piece with the cancel cut around (1)	40
9476	U	Kuripuni (MS) 1879-1919 A coin slight overinked 30 SP 12 cancel on KEVII 2d (1)	20	9502	U	Muritai (WN) 1898-1907 A coin 19 JA 99 Fair/Good cancel on 1898 2d Pictorial (1)	20
9477	U	Martinborough (MS) 1882-1992 Complete Fine A coin 29 JY 91 on 1d 2nd Sideface pair piece (2)	10	9503	U	Ngauranga (WN) 1951-57 Complete J Class 7 JA 52 on KGV 1/2d Brown piece. The day date altered from 6 to 7 in manuscript (1)	20
9478	U	Masterton (MS) Small Collection of different cancels mounted - A coin (5,different), F Class (2, different), G Class (2,different), J Class (5,different), C Class (9,different) (23 items)	50	9504	U	Ohariu (WN) 1871-1920 A coin MR 2 0? good cancel on 1d Universal piece. Not complete (1)	40
9479	U	Newman (MS) 1888-1915 Part A coin 8 FE 98, name complete and a light cancel on 1d 2nd Sideface Pair (2)	30	9505	U	Otaki (WN) 1854- A coin 4 JL 96 complete good cancel on 1d 2nd Sideface Pair (2)	10
9480	U	Nireaha (MS) 1897-1962 A coin 15 JA 31 complete cancel on 1d FM (1)	20	9506	U	Otaki Railway (WN) 1898-1988 A coin 5 NO 00 good cancel on 1900 1d Pictorial Pair (2)	10
9481	U	Opaki (MS) 1886-1927 A coin 27 DE 06 overinked cancel on 1d Universal. Has a light month date (1)	40	9507	U	Paraparaumu (WN) 1888- A coin 14 FE 93 good cancel on 2d 2nd Sideface. Minor overinking (1)	20
9482	U	Pahautea (MS) 1921-27 Part J Class 25 ? 22 on KGV 2d. PAHAU(TEA) light dates. Rated 9. Very Scarce (1)	100	9508	U	Porirua Camp (WN) 1948-51 J Class 9 FE 49 complete on KGV 1/2d Green piece with the cancel cut around (1)	30
9483	U	Parkvale (MS) 1897-1924 A coin 14 OC 01 slight overinking cancel on 1d Universal (1)	30	9509	U	Rongotai (WN) 1937-41 J Class 10 FE 40 good cancel on 1940 6d Centennial piece with the cancel cut around (1)	30
9484	U	Rongokokako (MS) 1901-16 Part H Class NO 26 0? on 1d Universal. RONGOKOK(AKO) light in parts (1)	30	9510	U	Rukuhia Air Force (WN) 1942-43 Part cancel (RU) KUHIA (AIR FORCE) ? FE 42 on 1935 2d Pictorial. Rated 10. Very Scarce (1)	100
9485	U	Rongomai (MS) 1895-1914 A coin 31 MR 06 Fair/Good cancel on 1d Universal (1)	40	9511	U	Te Aro (WN) 1883-1905 A coin 29 DE 87 2x complete cancels on 1d 2nd Sideface Pair (2)	40
9486	U	Taueru (MS) 1868-1923 A coin 28 MY 08 Fair cancel on 1d Universal (1)	40	9512	U	Woburn (WN) 1950-53 J Class 16 NO 51 2x cancels on KGV 1d Green Piece with the cancel cut around. (1)	20
9487	U	Tauherenikau Military Camp (MS) 1915-16 Double Circle 10 JA 16 cancel on KEVII 1/2d & 1d Dominion. Complete cancel & Fine (2)	50	<u>NELSON</u>			
9488	U	Tawataia (MS) 1898-1918 Fine A coin 4 OC 99 2x cancels on 1898 1d & 2d Pair on piece. Fine cancels (3)	50	9513	U	Aporo (NN) 1912-16 J Class Part cancel on 1d Dominion & 1/2d Warstamp 12 JE 16. Light 'AP' letters. Very Scarce. Rated 10 (2)	200
9489	U	Tiraumea (MS) 1919-60 Complete H Class (English) 2 OC 31 cancel on KGV 2d with the cancel cut around (1)	20	9514	U	Cobb Rover (NN) 1938-45 J Class 3 OC 44 complete on KGV 1/2d Brown piece. Rated 7 (1)	40
9490	U	Whakataki (MS) 1880-1916 A coin 10 MY 00 a little overinked cancel on 1900 1d Pictorial (1)	20	9515	U	Puniwhakau (NU) 1905-30 H Class 19 AU 29 on Registration label. Slight overinking (1)	30
<u>WELLINGTON</u>							
9491	U	Adelaide Road (WN) 1894-1989 A coin 2 MR 01 fine cancel on 1900 6d Kiwi (1)	20				

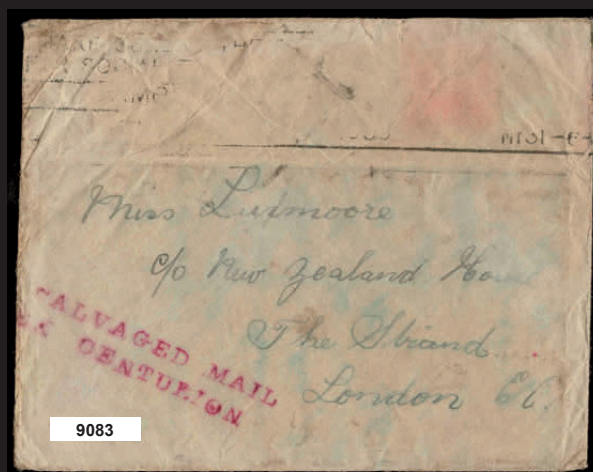
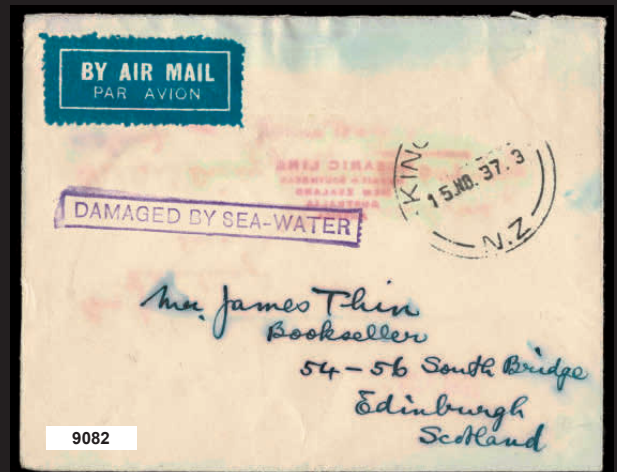
LOT			PRICE	LOT			PRICE
BLENHEIM							
9516	U	Blenheim(BM) A small collection mounted of Early 1867 cds, A coin (7,different), B coin (2,different), F Class, G Class, C Class (17,different) and Registered (2,different) - (31 items)	100	9543	U	Mokihinui (WP) 1885-99 A coin 13 SP 95 good cancel on 1d 2nd Sideface. The stamp has a blue registration horizontal line (1)	35
9517	U	Bulwer (BM) 1901-65 A coin 3 AP 02 Fair/Light cancel on 1d Universal. The day date inverted (1)	30	9544	U	Oparara (WP) 1913-49 J Class 15 DE 30 good cancel on 1d FM piece with the cancel cut around (1)	20
9518	U	Clarence Bridge (BM) 1898-1973 A coin 12 JA 04 nearly complete cancel on 1d Universal (1)	20	9545	U	Papahaoa (WP) 1919-59 J Class on KGV 1/2d piece with the cancel cut around (1)	20
9519	U	Croixelles (BM) 1898-1917 Part A coin 9 FE 01 cancel on 1900 1d Pictorial. (CR)OIXELLES. (1)	40	9546	U	Seddonville (WP) 1891-1988 A coin 24 JE 20 complete cancel on 1920 1 1/2d Victory. Fine cancel (1)	10
9520	U	Deep Creek (BM) 1864-1950 J Class 16 AP 34 complete cancel on 1d FM piece with the cancel cut around (1)	20	9547	U	St Helens (WP) 1944-59 J Class 24 JA 59 complete cancel on QE 1/2d Pair (1)	40
9521	U	Elmslie's Bay (BM) 1878-1904 Fine A coin 27 MR 99 cancel on 1898 1d Pictorial Pair (2)	20	9548	U	Tiroroa (WP) 1928-42 J Class 3 DE 37 good cancel on 1935 1d Pictorial piece (1)	30
9522	U	Flaxbourne (BM) 1905-11 H Class (English) light cancel 7 JA 11 on 1d Dominion piece (1)	40	9549	U	Waimangaroa (WP) 1876-1988 A coin 20 JE 13 good cancel on 1d Dominion piece (1)	20
9523	U	Grassmere (BM) 1905-22 Part F Class (Squared) 1 SP 13 cancel on 1d Dominion piece. Light in parts (1)	40	9550	U	Westport (WP) Small Collection with different cancels mounted incl A coin (3,different incl 1/- 2nd Sideface Strip of 3 with 3 cancels), B Class (4,different), F Class (Squared 3,different), J Class (6,different), C Class (5,different) (21 items)	100
9524	U	Hapuku (BM) 1902-47 A coin 3 AU 22 fine cancel on 1920 1d Victory (1)	20	GREYMOUTH			
9525	U	Kenepuru (BM) 1881-1903 A coin 22 MR 98 Fair/Good cancel on 2d 2nd Sideface (1)	30	9551	U	Ahaura (GM) 1867-1991 A coin 5 line part cancel on 1d 2nd Sideface dated AP 11 92 with the name nearly complete (1)	30
9526	U	Kenepuru Head (BM) 1907-37 J Class 4 JE 37 good cancel on 1935 1d Pictorial piece (1)	40	9552	*U	Bell Hill (GM) 1924-40 J Class 26 SP 33 Fair/Good cancel on 1d FM piece with the cancel cut around (1)	25
9527	U	Maori Bay (BM) 1891-1946 J Class 27 AU 35 good cancel on 1935 1d Pictorial piece with the cancel cut around (1)	20	9553	U	Big River (GM) 1933-43 A coin 1 SP 35 a little overinked on 1d FM piece with the cancel cut around (1)	20
9528	U	Picton (BM) Small Collection mounted - A coin (4,different), G Class, J Class (3 different) - (8 items)	30	9554	U	Bruce Bay (GM) 1885-1935 J Class 1 NO 34 on 1d FM piece with the cancel cut around. Light date (1)	20
9529	U	Portage (BM) 1903-56 J Class complete 28 SP 34 on 1d FM piece with the cancel cut around (1)	20	9555	U	Capleston (GM) 1936-45 Complete J Class 8 DE 37 on 1935 1/2d Pictorial piece with the cancel cut around. (1)	40
9530	U	Pukekoiki (BM) 1912-42 J Class light 22 DE 34 complete cancel with the name in full and the dates light. The cancel has been cut around (1)	40	9556	U	Dillmanstown (GM) 1886-1916 A coin 15 JA 04 Fair cancel on 1d Universal piece. Rated 8. Scarce (1)	75
9531	U	Te Awaiti (BM) 1909-66 A coin 22 JE 33 complete a little overinked on 1d FM piece with the cancel cut around (1)	20	9557	U	Evans Creek (GM) 1924-50 Fine J Class 30 MY 31 on KGV 2d piece (1)	20
9532	U	Te Rou (BM) 1908-58 G Class 22 MY 35 complete on 1d FM piece with the cancel cut around (1)	20	9558	U	Gillespie's Beach (GM) 1870-1912 A coin 12 AP 89 Fair strike on 2d 2nd Sideface piece with odd light letters. Early date (1)	50
9533	U	The Delta Military Camp (BM) 1943-43 J Class complete 7 AP 43 on piece on 1935 2d Pictorial Official piece with the cancel cut around. Rated 8. Scarce. (1)	75	9559	U	Goldsborough (GM) 1884-1953 A coin 15 FE 18 a little overinked cancel on KGV 1/2d & 1d Dominion piece (1)	30
9534	U	Tira-Ora (BM) 1897-47 A coin complete on 1935 1/2d Pictorial piece with the cancel cut around (1)	20	9560	U	Greymouth (GM) Small Collection of different cancels mounted incl A coin (4,different), B Class (3,different), G Class, J Class (3,different), C Class (9,different), Registered Letter (2,different) (22 items)	50
9535	U	Waitata Bay (BM) 1911-65 Fine J Class 4 SP 33 on 1d FM piece with the cancel cut around (1)	20	9561	U	Herepo (GM) 1914-28 B Class ?0 FE 25 Part cancel on 1d Dominion piece with the complete name. (1)	40
WESTPORT				9562	U	Hohonu (GM) 1907-56 J Class complete on 1935 1d Pictorial piece dated 1 JL 35 (1)	20
9536	U	Addison's (WP) 1874-1926 A coin ?1 OC 13 Fair/Good cancel on 1d Dominion. Not complete (1)	40	9563	U	Hokitika (GM) Small Collection of different cancels incl A coin (4,different), B Class, F Class, J Class (2,different), C Class (7,different) (15 items)	50
9537	U	Cape Foulwind (WP) 1887-1957 J Class 11 AP 34 fine cancel on 1d FM piece with the cancel cut around (1)	20	9564	U	Ikamatua (GM) 1908-1988 H Class (English) 4 FE 13 complete cancel on KGV 1d cutout (1)	10
9538	U	Carter's Beach (WP) 1948-57 J Class 18 DE 50 slight overinked cancel on KGV 2d piece with the cancel cut around (1)	30	9565	U	Inchbonnie (GM) 1902-56 J Class 11 JL 36 complete on 1935 1d Pictorial piece with the cancel cut around (1)	20
9539	U	Corbyvale (WP) 1939-48 J Class 8 AU 34 complete cancel on 1d FM piece with the cancel cut around (1)	40	9566	U	Kamaka (GM) 1907-58 B coin 19 MY 31 complete cancel on KGV 2d piece (1)	20
9540	U	Denniston (WP) 1883-1971 J Class 17 AU 31 fine cancel on KGV 2d piece (1)	10	9567	U	Koiterangi (GM) 1896-1947 A coin 13 FE 35 slight overinked cancel complete on KGV 1/2d piece with the cancel cut around (1)	20
9541	U	Granity Creek (WP) 1892-99 A coin 10 JA 98 not complete on 1d 2nd Sideface Pair (2)	40				
9542	U	Lyell (WP) 1870-1963 A coin 11 AU 97 cancel on 1d 2nd Sideface piece (1)	10				

LOT			PRICE	LOT			PRICE
9568	U	Kotuku (GM) 1912-58 J Class 2 SP 38 complete on KGV 1d Red piece (1)	20	9594	U	Ataahua (CH) 1897-1964 A coin 28 JL 08 slightly overinked cancel on 1d Universal (1)	20
9569	U	Mahitahi (GM) 1895-1976 A coin 1 SP 03 complete cancel on 1d Universal Pair piece. The dates a little light (2)	20	9595	U	Barry's Bay (CH) 1873-1952 J Class 1 FE 52 complete cancel slightly overinked on KGV 2d piece (1)	20
9570	U	Marsden (GM) 1870-1958 A coin 20 JA 00 good cancel on 1898 1d. Not complete (1)	20	9596	U	Belfast (CH) 1882-1992 Fine A coin 21 AU 01 on 1898 2 1/2d Wakatipu (1)	10
9571	U	Matainui (GM) 1911-34 J Class 30 MY 31 complete cancel on KGV 2d piece (1)	40	9597	U	Brookside (CH) 1870-1924 A coin 11 OC 21 fine cancel on 2d KGV piece. (1)	20
9572	U	Okarito (GM) 1874-1957 A coin 25 OC 01 slight overinked cancel complete on 1d Universal (1)	20	9598	U	Carew (CH) 1903-12 A coin 27 OC 0? Part cancel slightly overinked on 1d Universal (1)	40
9573	U	Okura (GM) 1886-1915 A coin DE 20 03 Fair/Good cancel on 1d Universal piece (1)	40	9599	U	Cass River (CH) 1866-98 Part A coin CASS RIVE(R) on 1d 2nd Sideface. No date. 50% strike (1)	40
9574	U	Orwell Creek (GM) 1877-1918 A coin 2x Part 3 FE 9? cancels on 1d 2nd Sideface Pair (2)	30	9600	U	Castle Hill (CH) 1894-1905 A coin 6 AP 98 2x Part cancels on 1d 2nd Sideface Pair piece (2)	40
9575	U	Paringa (GM) 1883-1912 A coin 1 A? 05 Fair cancel on 1d Universal Pair (2)	40	9601	U	Chatham Islands (CH) 1856-1927 A coin 19 AP 81 good cancel on piece (1)	50
9576	U	Rewanui (GM) 1915-61 J Class 3 DE 24 complete cancel on 1d Dominion piece (1)	20	9602	U	Chertsey (CH) 1877-1988 A coin 13 JE 89 good complete cancel on 1d 2nd Sideface Pair (2)	20
9577	U	Rimu (GM) 1882-1979 A coin 13 AP 85 good cancel on 2d 2nd Sideface (1)	20	9603	U	Cheviot (CH) 1875-1992 A coin 19 JE 93 cancel on 2d 2nd Sideface (1)	10
9578	U	Rotomanu (GM) 1913-56 J Class 5 JA 35 complete on 1d FM piece with the cancel cut around (1)	20	9604	U	Claverley (CH) 1891-1902 A coin 19 AU 0? Part cancel on 2d 2nd Sideface (1)	40
9579	U	Taipo (GM) 1868-1909 A coin 3 NO 9? on 1d 2nd Sideface. Year date not complete (1)	40	9605	U	Cooper's Creek (CH) 1902-44 H Class 15 OC 34 cancel on 1d FM piece with the cancel cut around (1)	20
9580	U	Tatara (GM) 1906-64 H Class (English) 10 NO 31 cancel complete on 2d KGV with the cancel cut around (1)	10	9606	U	Courtenay (CH) 1866-1925 A coin 15 AU 94 cancel on 1d 2nd Sideface (1)	20
9581	U	Ten Mile Creek (GM) 1899-1922 H Class (English) Part overinked cancel on 1d 2nd Sideface Pair dated ? OC ? Rated 8. Scarce (2)	50	9607	U	Cust (CH) 1874-1988 A coin 18 JE 94 complete cancel on 1d 2nd Sideface with the cancel cut around (1)	10
9582	U	Teremakau (GM) 1889-1908 A coin ?0 MY ? Part cancel on 1900 1d Pictorial with the name nearly complete. Rated 9. Very Scarce (1)	100	9608	U	Dromore (CH) 1889-1950 A coin 16 AP 31 complete cancel on KGV 2d piece (1)	20
9583	U	Upper Blackwater (GM) 1899-1908 Part A coin 1 JL 07 cancel on 1d Universal piece. Some letters light. Rated 8. Scarce (1)	50	9609	U	Ealing (CH) 1877-1952 A coin 13 FE 09 slight overinked cancel on 1d Universal piece (1)	20
9584	U	Waiho Gorge (GM) 1898-1938 J Class 12 NO 31 complete cancel on 1d FM piece with the cancel cut around (1)	50	9610	U	Flemington (CH) 1881-1924 A coin 16 NO 03 overinked cancel on 1d Universal piece (1)	30
9585	U	Wataroa (GM) 1884-1924 A coin 11 NO 11 complete cancel on 1d Dominion piece (1)	20	9611	U	German Bay (CH) 1872-1916 A coin 10 JA 98 Fair light cancel on 1d 2nd Sideface (1)	25
CHRISTCHURCH				9612	U	Governor's Bay (CH) 1884-1962 A coin 30 DE 02 complete on 1d Universal piece (1)	20
9586	U	Addington Military Camp (CH) 1940-40 Relief 5 AU 40 cancel on 1940 1d Centennial with the cancel cut around (1)	75	9613	U	Halkett Town (CH) 1870-1923 A coin 2 light ? MR 00 cancel on 1d 2nd Sideface pair. Light in parts (2)	25
9587	C	Addington Military Camp (CH) 1940-45 J Class 6 MY 42 receiving cancel on Cover from Dunedin. (1)	50	9614	U	Halswell (CH) 1879- A coin 21 JL 96 a little overinked cancel on 1d 2nd Sideface Pair (2)	10
9588	U	Allandale (CH) 1897-1947 J Class 21 JA 27 good cancel on 1d Dominion piece (1)	20	9615	U	Hampstead (CH) 1885-1917 A coin 13 MR 96 2x Fair/ Good cancels slight overinked on 1d 2nd Sideface Pair (2)	20
9589	U	Amberley (CH) 1873- A coin 3 DE 77 complete cancel on piece (1)	20	9616	U	Harewood Settlement (CH) 1946-59 J Class 5 MY 54 on 2d Red Meter piece (1)	20
9590	U	Ashburton (CH) Small Collection mounted with different cancels incl A coin (4,different incl 2d 2nd Sideface 1886 Block of 4 with 2x duplex cancels), F Class (2,different), H Class, G Class (2,different), Blackball, J Class, C Class (7,different) & Late Fee cancel (19 items)	100	9617	C	Harewood Sirport (CH) 1951-52 J Class 1 NO 51 complete on 1951 Health First Day Cover. Rated 8. Scarce (1)	75
9591	U	Ashburton Air Force (CH) 1942-44 J Class complete 8 DE 44 on KGV 3d Blue piece with the cancel cut around (1)	40	9618	U	Hawkins (CH) 1912-24 J Class 18 FE 19 complete cancel on KGV 1 1/2d Orange-Brown piece with the cancel cut around. Rated 8. Scarce (1)	75
9592	U	Ashburton Gorge (CH) 1882-1902 A coin 24 MR 00 Fair cancel on 1898 2d Pictorial. Slight overinking and odd light letters. (1)	50	9619	U	Heathcote Valley (CH) 1863-1963 A coin 14 AP 31 good cancel on KGV 2d piece (1)	20
9593	U	Ashton (CH) 1877-1924 A coin ? DE 08 Fair cancel on 1d Universal piece (1)	40	9620	U	Hinds (CH) 1875-1988 A coin 28 FE 91 3x Part to good cancels on 1d 2nd Sideface Strip of 3 (3)	25
				9621	U	Kaiapoi (CH) 1855- Small Collection mounted with different cancels incl A coin (2,different), B coin Rated 8, G Class, J Class (4,different) - (8 items)	75
				9622	U	Killinchy (CH) 1872-1924 a coin 3 SP 94 2x Part cancels on 1d 2nd Sideface pair (2)	20
				9623	U	Kimberley (CH) 1876-1924 A coin 9 SP 20 overinked cancel on KGV 2d piece (1)	25

LOT			PRICE	LOT			PRICE
9624	U	Kirwee (CH) 1877-1988 A coin 14 NO 92 complete cancel on 2d 2nd Sideface piece (1)	10	9654	U	Waikuku (CH) 1873-1990 A coin 4 FE 92 slight overinked cancel on 2d 2nd Sideface with the year date inverted (1)	25
9625	U	Kyle (CH) 1878-1923 J Class 1 MR 20 Part cancel on KGV 1 1/2d Orange-Brown. Rated 8. Scarce (1)	75	9655	U	Waitangi (CH) 1927- 6x Different J Class cancels from 1928 to 2003. All good cancels (6)	50
9626	U	Lakeside (CH) 1878-1924 A coin 8 AP 03 Fair/Good cancel on 1d Universal (1)	30	9656	U	Weedons (CH) 1889-1924 A coin 27 DE 19 good cancel on piece (1)	30
9627	U	Lismore (CH) 1883-1925 A coin 15 SP 21 good cancel on KGV 2d piece (1)	25	9657	U	Westerfield (CH) 1893-1934 A coin 23 SP 24 on 1d Map piece (1)	20
9628	U	Loburn (CH) 1879-1952 A coin 8 AP 35 complete fine cancel on KGV 1/2d Green piece with the cancel cut around (1)	20	9658	U	Wkakamatau (CH) 1914-21 J Class 23 MR 20 part cancel on KGV 1/2d Rated 8 Scarce (1)	100
9629	U	Lowcliffe (CH) 1894-1925 A coin 30 MR 04 fine cancel on 1d Universal piece with the cancel cut around (1)	20	9659	U	Woolston Railway (CH) 1883-1921 H Class 17 JL 12 Fair/Good cancel on 1d Dominion piece (1)	40
9630	U	Lyndhurst (CH) 1889-1947 J Class 20 AP 31 Fine cancel on KGV 2d piece (1)	20	TIMARU			
9631	U	Lyttelton (CH) Small Collection mounted with different cancels incl Early 1868 piece, A coin (4,different), B coin, H Class, G Class, F Class (2,different), J Class (3,different), C Class (6,different) (19 items)	50	9660	U	Adair (TU) 1891-1929 A coin 4 JL 00 Fair cancel on 1900 2d Pictorial. Light in parts (1)	50
9632	U	Marshland (CH) 1889-1945 A coin 3 SP 00 Fair/Light cancel on 1900 1d Pictorial Pair (2)	30	9661	U	Albury (TU) 1877-1988 A coin 12 JE 90 good cancel on 1d 2nd Sideface (1)	10
9633	U	Mina (CH) 1910-68 J Class Fine 18 AP 31 cancel on KGV 2d piece (1)	10	9662		Arno (TU) 1903-25 H Class (English) 12 NO 17 light cancel on 1d Dominion & KGV 1/2d piece. Not complete. Rated 9. Very Scarce (1)	100
9634	U	Mitcham (CH) 1905-47 A coin 20 JA 31 on 1d FM piece with slight overinking (1)	20	9663	U	Clive (TU) 1883-1988 A coin DE 11 91 good cancel on 2d 2nd Sideface (1)	20
9635	U	New Brighton (CH) 1888- A coin 16 OC 99 good cancel on 3d 2nd Sideface piece with slight overinking (1)	10	9664	U	Cricklewood (TU) 1897-1948 Fine J Class 23 OC 34 cancel on 1d FM piece (1)	40
9636	U	North New Brighton (CH) 1917-47 B coin 17 AP 24 on 1d Dominion piece and slight overinking (1)	20	9665	U	Fairlie (TU) 1892-1989 a coin 6 JL 95 good cancel on 1d 2nd Sideface (1)	10
9637	U	Norwood Air Force (CH) 1942-44 J Class 26 MY 44 good cancel on 1935 2d Pictorial piece. Rated 10. Scarce (1)	100	9666	U	Geraldine (TU) 1868- A coin 26 MR 85 good cancel on 2d 2nd Sideface (1)	20
9638	U	Poranui (CH) 1908-42 H Class (English) 15 MY 43 cancel on Early Registration label (1)	20	9667	U	Kimbell (TU) 1899-1929 A coin 2 NO 17 good cancel on 1d Dominion & KGV 1/2d piece (2)	20
9639	U	Puwari (CH) 1926-40 J Class 29 NO 35 good cancel on piece with the cancel cut around (1)	40	9668	U	Levels (TU) 1900-47 H Class (English) 27 JL 31 good cancel on KGV 2d piece (1)	20
9640	U	Rangiora (CH) 1858- A coin 8 DE 99 slight overinked cancel on 1d 2nd Sideface Pair (2)	10	9669	U	Makikihi (TU) 1876-1988 A coin 15 MY 97 good cancel on 1d 2nd Sideface Pair (2)	10
9641	U	Riverside (CH) 1893-1925 A coin 2? JL 94 Fair/Light cancel on 1d 2nd Sideface. Early date (1)	40	9670	U	Otaio (TU) 1890-1937 J Class 23 MR 36 good cancel on 1935 1d Pictorial piece with the cancel cut around (1)	30
9642	U	Seaview (CH) 1882-1925 A coin 5 FE 01 good cancel on 1900 1d Pictorial (1)	25	9671	U	Pareora East (TU) 1904-10 H Class (English) NO 16 04 part cancel on 1d Universal. (PARE)ORA EAST. Rated 9. Very Scarce (1)	100
9643	U	Sheffield (CH) 1875-1986 A coin 30 MR 92 good cancel on 2d 2nd Sideface piece (1)	20	9672	U	Peel Forest (TU) 1876-1988 A coin 2 AP 01 slight overinked cancel on 1900 1d Pictorial (1)	20
9644	U	Southbrook (CH) 1872-1966 A coin 24 AU 00 Fine cancel on 1d 2nd Sideface piece (1)	10	9673	U	Seadown (TU) 1893-1937 A coin 24 SP 35 good cancel on 1935 1/2d Pictorial piece with the cancel cut around (1)	20
9645	U	Spreydon (CH) 1905-29 F Class (Squared) 20 JL 26 Part cancel on 1d Dominion (1)	30	9674	U	Sherwood Downs (TU) 1912-17 Part J Class ? OC 16 light cancel on KGV 1 1/2d Black on piece. Some light letters. Rated 9. Very Scarce (1)	100
9646	U	Springston (CH) 1868-1924 A coin 7 MR 98 complete good cancel on 1d 2nd Sideface piece (1)	20	9675	U	Te Moana (TU) 1893-1918 A coin 1 FE 15 good cancel on KEVII 1/2d Green (1)	40
9647	U	Springston Railway (CH) 1901-65 H Class (English) 29 FE 24 cancel on 1d Dominion piece (1)	20	9676	U	Timaru (TU) Small Collection mounted with different cancels - A coin(8,different), B coin (3,different), F Class (2,different), J Class (4,different), C Class (10,different) & Postal Delivery branch cancel. (28 items)	75
9648	U	Stewart's Gully (CH) 1940-47 J Class 23 DE 41 good cancel on 1935 2d Pictorial piece with the cancel cut around (1)	30	9677	U	Wahimomona (TU) 1990-13 H Class (English) Part 1 FE ? cancel on 1900 1/2d Pictorial Pair. WAHIMOMO(NA) Rated 9. Very Scarce (2)	75
9649	U	Takamatua (CH) 1916-43 C Class 12 JE 37 25.5mm complete on 1935 1d Pictorial piece (1)	30	OAMARU			
9650	U	Taratuhi (CH) 1937-41 J Class 27 JA 39 fine cancel on KGV 1d Red piece with the cancel cut around (1)	40	9678	U	Ardgowan (OU) 1901-21 A coin OC 5 O? overinked part cancel on 1d Universal. Rated 9. Very Scarce (1)	75
9651	U	Taumutu (CH) 1887-1924 Part A coin 6 JL 01 on 1d Universal (1)	30	9679	U	Awamoko (OU) 1869-1936 A coin 5 JA 04 slight overinked cancel on 1d Universal (1)	25
9652	U	Tinwald (CH) 1878-1988 A coin 25 DE 00 good cancel on 1900 6d Pictorial. Christmas Day cancel (1)	25				
9653	U	Upper Waiau Ferry (CH) 1876-1907 Part A coin 26 MR 92 cancel a little overinked on 1d 2nd Sideface Pair (2)	30				

LOT			PRICE	LOT			PRICE
9680	U	Enfield (OU) 1878-1966 A coin 1 NO 34 good cancel on 1d FM piece. The month date altered in manuscript (1)	20	9706	U	Fruitlands (DN) 1916-29 J Class ? NO 20 overinked cancel on 1920 6d Victory. Some light letters (1)	40
9681	U	Hakateramea (OU) 1885-97 Part A coin ? JA 96 on 1d 2nd Sideface. Missing the first letter 'H' (1)	30	9707	U	Gibbston (DN) 1873-1924 A coin 18 FE 10 good cancel on 1d Dominion piece (1)	30
9682	U	Hillgrove (OU) 1884-1970 A coin 9 DE 96 good cancel on 2d 2nd Sideface (1)	10	9708	U	Glendermid (DN) 1878-93 A coin ? JA 89 overinked and smudged cancel on 1d 2nd Sideface. Rated 8. Scarce (1)	75
9683	U	Maheno (OU) 1871-1979 A coin 7 AP 94 a little overinked cancel on 2d 2nd Sideface (1)	20	9709	U	Glenoamaru (DN) 1896-1949 A coin 22 MY 96 a little overinked cancel not complete on 2d 2nd Sideface (1)	25
9684	U	Oamaru (OU) Small Collection mounted with different cancels - A coin (5,different), B coin (3,different), G Class, F Class, J Class (7,different), C Class (5,different) - (22 items)	50	9710	U	Hamilton South (DN) 1901-13 H Class (English) 10 MY 12 Slight overinked cancel on KEVII 1/2d Green pair (2)	30
9685	*U	Otematata Camp (OU) 1958-58 Fine J Class 7 MR 58 on QE 3d piece (1)	25	9711	U	Hamilton's (DN) 1864-98 Part Obliterator '053' on Perforated 2d Orange Full Face Queen. (1)	50
9686	U	Otiake (OU) 1882-1938 A coin 2 DE 27 fine cancel on 1d FM piece (1)	30	9712	U	Henley (DN) 1876-1980 A coin 11 MR 98 on 1d 2nd Sideface piece (1)	10
9687	U	Tokarahi (OU) 1897-1941 J Class 30 MY 36 Good cancel on 1935 1d Pictorial with the cancel cut around (1)	40	9713	U	Highcliffe (DN) 1907-59 J Class 14 FE 35 complete on KGV 1/2d piece with the cancel cut around (1)	10
9688	U	Waianakarua (OU) 1897-1951 J Class 11 JA 37 good cancel complete on 1935 1d Pictorial piece with the cancel cut around (1)	40	9714	U	Hindon (DN) 1863-1949 A coin 4 DE 35 complete cancel on 1935 1/2d Pictorial piece with the cancel cut around (1)	10
9689	U	Waiareka Junction (OU) A coin 30 SP 04 Fair/Good cancel on 1d Universal. The month date light (1)	40	9715	U	Hindon Railway (DN) 1903-69 H Class (English) 16 DE 33 complete cancel on 1d FM piece with the cancel cut around (1)	20
9690	U	Whitstone (OU) 1903-50 A coin 2 NO 34 complete slightly overinked cancel on 1d FM piece with the cancel cut around (1)	20	9716	U	Island Block (DN) 1893-1942 A coin 9 JA 30 slight overinked cancel on KGV 1/2d Pair on piece (2)	20
DUNEDIN				9717	U	Kakpuaka (DN) 1886-1946 A coin 24 OC 33 3x cancels on 1d FM Block of 4 with 2 good cancels (4)	30
9691	U	Ahuriri Flat (DN) 1896-1923 A coin 31 OC 10 Part/ Light cancel on 1d Dominion piece with the cancel cut around. Some letters very light (1)	40	9718	U	Kokonga (DN) 1895-1980 A coin 26 NO 31 good cancel on KGV 2d (1)	10
9692	U	Alexandra South (DN) 1881-1914 H Class (English) 11 AP 10 cancel on 1d Dominion piece (1)	30	9719	U	Kyeburn (DN) 1863-1967 A coin 11 JE 02 slight overinked cancel on 1d Universal (1)	20
9693	U	Bald Hill Flat (DN) 1876-1916 A coin 7 SP ? Fair/Good cancel on 2d 2nd Sideface. The year date unclear (1)	30	9720	U	Lauder (DN) 1905-65 A coin 30 JE 25 slight overinked cancel on 1d Map (1)	20
9694	U	Beck's (DN) 1878-1928 A coin 31 JA 21 a little overinked cancel on KGV 2d piece (1)	20	9721	C	Lee Stream (DN) 1895-1925 A coin 26 DE 13 receiving cancel on Postcard from Dunedin. Light 'E' in Stream. (1)	50
9695	C	Bluespur (DN) 1867-1944 Registered Cover with '35 1d Silver Jubilee, '35 2d Pictorial & 1d FM tied by A coin 15 MY 35 cancel plus cancel on registration label (1)	50	9722	U	Lee Stream (DN) 1895-1925 A coin DE 7 09 Missing 'M' last letter. Not complete (1)	40
9696	U	Cardrona (DN) 1863-1956 A coin 19 MY 31 good cancel on KGV 2d Ppiece (1)	10	9723	U	Lindis Crossing (DN) 1911-36 B coin 25 JL 35 complete on 1935 1/2d Pictorial piece with the cut around (1)	30
9697	U	Caversham (DN) 1884-1947 A coin 28 FE 88 good cancel on 1d 2nd Sideface (1)	30	9724	U	Makarora (DN) 1883-1926 A coin 6 MR 06 slight overinking (1)	10
9698	U	Chaslands (DN) 1894-1927 A coin 21 FE 20 on KGV 1 1/2d Orange Brown piece complete (1)	25	9725	U	Maori Hill (DN) 1912-23 B coin 3 SP 21 good cancel on 1920 1 1/2d Victory (1)	20
9699	U	Clarendon (DN) 1906-38 F Class (Squared) 17 SP 19 3x Part cancels on KGV 1/2d KGV Strip of 3 (3)	25	9726	U	Middlemarch (DN) 1879-1992 A coin 27 AU 92 good cancel on 2d 2nd Sideface piece (1)	10
9700	U	Clarksville (DN) 1896-1930 J Class 27 JE 13 slight overinked cancel on 1d Dominion piece (1)	25	9727	U	Mihiwaka (DN) 1914-52 C Class 8 MR 31 good cancel on piece (1)	30
9701	U	Coal Creek Flat (DN) 1870-1926 A coin 12 JA 23 slight overinked cancel on KGV 1/2d piece. Light day and month dates (1)	40	9728	U	Moray Place Paid (DN) C Class 13 MY 16 Fair cancel plus Red Boxed 1d Paid Meter handstamp piece. Scarce (1)	50
9702	U	Crookston (DN) 1878-1936 J Class 26 SP 35 complete on 1935 1/2d Pictorial piece with the cancel cut around (1)	20	9729	U	Mount Stuart (DN) 1915-41 J Class 11 SP 35 complete cancel a little overinked on 1935 1/2d Pictorial piece (1)	20
9703	U	Dunback (DN) 1879-1988 B coin 8 MY 22 good cancel on 1920 1d Victory (1)	20	9730	U	Naseby (DN) 1873-1988 A coin 16 DE 92 a little overinked cancel on 1d 2nd Sideface Pair (2)	10
9704	U	Dunrobin (DN) 1876-1937 A coin 4 MR 31 2x slight overinked cancels on 1d FM Pair piece (2)	25	9731	U	Ngapuna (DN) 1910-27 Part J Class 7 MY 13 cancel on KEVII 1/2d Blue cutout (1)	40
9705	U	Ettrick (DN) 1883-1988 A coin 2 FE 22 good cancel on 1920 1 1/2d Victory (1)	10	9732	U	North East Valley (DN) 1900-1988 A coin 13 MR 01 nice cancel on 1900 1d Pictorial (1)	20
				9733	U	Palmerston (DN) 1864-1989 Good A coin 10 AU 91 cancel on 1d 2nd Sideface Pair (2)	10

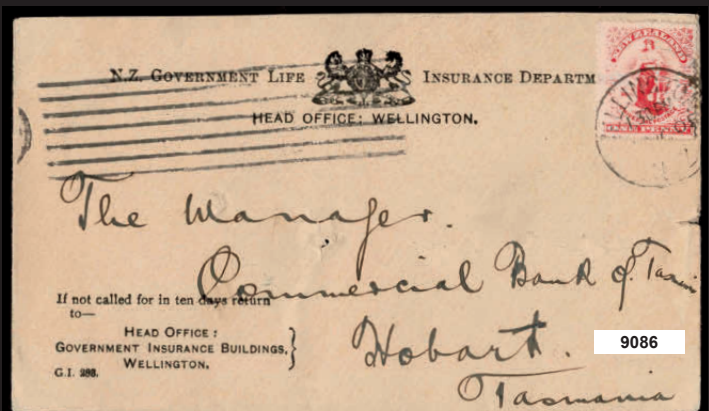
LOT			PRICE	LOT			PRICE
9734	U	Papatowai (DN) 1896-1931 A coin 22 JA 23 Fair/Good cancel on KGV 2d. Light in parts (1)	25	9764	U	Isla Bank (IN) 1874-1937 A coin 18 AU 31 good cancel on KGV 2d piece (1)	20
9735	U	Poolburn (DN) 1902-64 A coin 15 DE 31 good cancel on KGV 2d piece (1)	20	9765	U	Longridge Village (IN) 1890-1907 A coin 2 DE 03 light cancel on 1d Universal. Some letters light (1)	40
9736	U	Port Molyneux (DN) 1863-1938 J Class 12 OC 31 good cancel on KGV 2d with the cancel cut around (2)	20	9766	U	Macetown (IN) 1976-1916 Part A coin 16 OC 9? on 2d 2nd Sideface. MACETO(WN) (1)	40
9737	U	Pukerangi (DN) 1912-66 J Class 15 DE 31 good cancel on KGV 2d piece with the cancel cut around (1)	10	9767	U	Maori Point (IN) 1863-1920 A coin 7 MR 01 light cancel on 1900 1d Pictorial with some light letters. Rated 8. Scarce (1)	50
9738	U	Puketiro (DN) 1910-55 J Class 31 OC 34 slight overinked cancel on 1d FM with the cancel cut around (1)	20	9768	U	Menzies Ferry (IN) 108-49 G Class 2 NO 31 on KGV 2d good cancel with the cancel cut around (1)	20
9739	U	Rongahere (DN) 1922-30 A coin Fair overinked cancel on 2d KGV. Not complete (1)	50	9769	U	Mokotua (IN) 1895-1928 A coin 15 SP 23 slight overinked cancel on KGV 1 1/2d Orange-Brown piece with the cancel cut around (1)	40
9740	U	Rough Ridge (DN) 1873-1901 Part A coin 1 MY 9? Missing the letters 'GE' on 1d 2nd Sideface (1)	35	9770	U	Nokomai (IN) 1864-1925 A coin 25 JE 20 Fair cancel on KGV 1 1/2d Orange Brown piece with odd light letter (1)	30
9741	U	Rough Ridge (DN) 1902-08 H Class (English) 17 AP 02 Fair/Good cancel on KEVII 2d cutout (1)	40	9771	U	Otama (IN) 1883-1927 A coin 9 AP 26 good cancel on KGV 1/2d Green Pair (2)	10
9742	U	South Dunedin (DN) 1883- A coin 13 FE 88 2x cancels Fair/Good cancels on 1d 2nd Sideface pair (2)	20	9772	U	Paradise (IN) 1905-29 H Class (English) NO 25 0? Part cancel on 1d Universal piece. Light first letter 'P' and year date (1)	30
9743	U	Stuarts (DN) 1935-45 J Class 20 JE 35 complete cancel on 1d 1935 Pictorial piece (1)	30	9773	U	Poukino (IN) 1916-38 J Class 23 NO 32 complete cancel on 1d FM piece with the cancel cut around (1)	30
9744	U	Tarras (DN) 1889-1988 A coin 18 MY 92 slight overinked cancel on 2d 2nd Sideface piece (1)	10	9774	U	Putangahau (IN) 1916-37 J Class 11 JE 34 a little overinked cancel on 2d KGV piece. Some letters light (1)	50
9745	U	Waitahuna (DN) 1876-1988 A coin 11 FE 96 good cancel on 1d 2nd Sideface Pair (2)	10	9775	U	Quarry Hills (IN) 1891-1928 A coin 1 JA 01 Fair cancel on 1d Universal (1)	30
9746	U	Warepa (DN) 1879-1957 A coin 5 JE 95 on 2d 2nd Sideface (1)	20	9776	U	Round Hill (IN) 1891-1943 A coin 6 OC 21 on 2d KGV (1)	20
9747	U	Watati (DN) 1887-1992 A coin 31 DE 00 good cancel on 1d 1900 Pictorial Pair (2)	10	9777	U	South Hillend (IN) 1885-1931 A coin JA 5 09 Fair cancel on 1d Universal. The Month and date inverted (1)	25
9748	U	Wharetoa (DN) 1909-28 J Class ? ? 25 Part slight overinked cancel on 1d Dominion. (1)	40	9778	U	Spar Bush (IN) 1898-1926 J Class 18 MR 21 overinked part cancel on 1920 1/2d Victory. Rated 9. Very Scarce (1)	75
9749	U	Wylie's Crossing (DN) 1897-1931 A coin 8 AP 31 good cancel on piece complete (1)	25	9779	U	Te Oneroa (IN) 1897-1905 A coin DE 2 98 overinked cancel on 1898 2d Pictorial (1)	40
<u>INVERCARGILL</u>				9780	U	Te Tua (IN) 1907-37 A coin 24 ? 34 complete cancel on 1d FM piece with the cancel cut around. Month date light (1)	40
9750	U	Arrowtown (IN) 1887-1990 A coin 2x Good cancels 19 AP 92 cancels on 1d 2nd Sideface Pair (2)	10	9781	U	Te Waewae (IN) 1908-37 G Class 8 DE 33 Fair/Good cancel on 1d FM piece with the cancel cut around (1)	30
9751	U	Awarua Plains (IN) 1905-52 H Class (English) 1 FE 34 complete cancel on KGV 1/2d Green piece with the cancel cut around (1)	20	9782	U	Tihaka (IN) 1912-20 Part J Class 19 JL 21 on KGV 2d. Missing part of last letter A (1)	40
9752	U	Barkley Village (IN) 1891-1902 Part A coin 24 DE ? with the cancel reading 'BARKLEY VI' on 1d 2nd Sideface. (1)	30	9783	U	Trafalgar (IN) 1939-43 J Class complete on 16 AP 42 on 1935 2d Pictorial piece with the cancel cut around (1)	30
9753	U	Barkly (IN) 1907-23 Part H Class (English) 1 NO 2? on 2d KGV. Odd light letter (1)	40	9784	U	Tussock Creek (IN) 1923-30 H Class (English) 2 MY 29 good cancel on 1d FM Pair (2)	40
9754	U	Cascade Creek (IN) 1939-40 Part J Class 26 AP 39 on KGV 1/2d Green Pair. CASCADE C(REEK). Rated 8. Scarce (2)	50	9785	U	Waikaka Valley (IN) 1888-1928 A coin 18 DE 00 good cancel on 1900 2d Pictorial (1)	20
9755	U	Chatton (IN) 1878-1929 A coin 13 DE 11 slight overinked cancel (1)	20	9786	U	Waikawa Valley (IN) 1891-1923 A coin 15 JL 95 good cancel on 1d 2nd Sideface (1)	40
9756	U	Clifden (IN) 1893-1929 A coin 1 AP 22 good cancel on KGV 2d (1)	20	9787	U	Waipahi (IN) 1875-1986 A coin 31 MR 93 on 1d 2nd Sideface Pair (2)	10
9757	U	Edendale South (IN) 1926-30 Fine J Class 16 OC 26 on 1d Dominion piece. (1)	50	9788	U	Walter Peak (IN) 1914-23 Part C Class ? NO 18 on KGV 1 1/2d Orange Brown. A little overinked. Rated 10. Scarce (1)	100
9758	U	Freshford (IN) 1913-32 J Class 15 OC 31 slight overinked cancel on KGV 2d piece (1)	40	9789	U	Wendon (IN) 1891-1924 A coin 9 JL 20 good cancel on 1920 1 1/2d Victory (1)	20
9759	U	Gore (IN) Small Collection mounted with different cancels - A coin (4,different), F Class (2,different), H Class, J Class (3,different), C Class (6,different) - (16 items)	80				
9760	U	Gummies Bush (IN) 1872-1941 A coin 10 AP 34 Fair cancel on 1d FM piece with the cancel cut around (1)	30				
9761	U	Harrington's (IN) 1893-1927 A coin 2 OC 08 Fair cancel on 1898 3d with some light letters (1)	25				
9762	U	Hollyford (IN) 1935-41 J Class 22 OC 35 cancel complete on 1935 1d Pictorial piece with the cancel cut around (1)	25				
9763	U	Invercargill (IN) Small Collection mounted with different cancels - A coin (9,different), F Class (3,different), B Class (7,different), G Class, J Class (6,different), C Class (10,different), Paid (2,different), Postmen's Branch, Registration (2,different) - (41 items)	125				



Auckland City Stamps

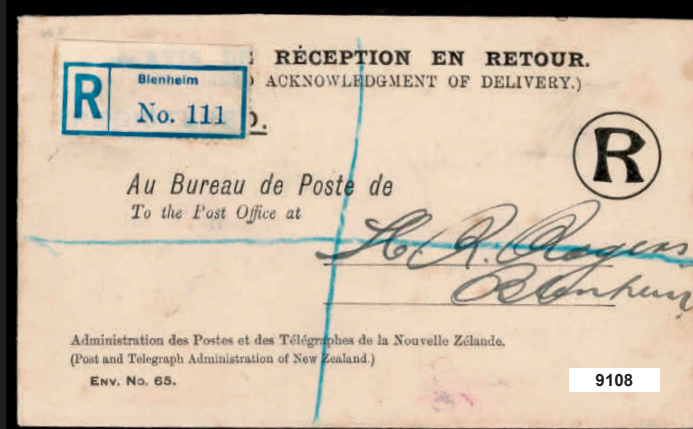
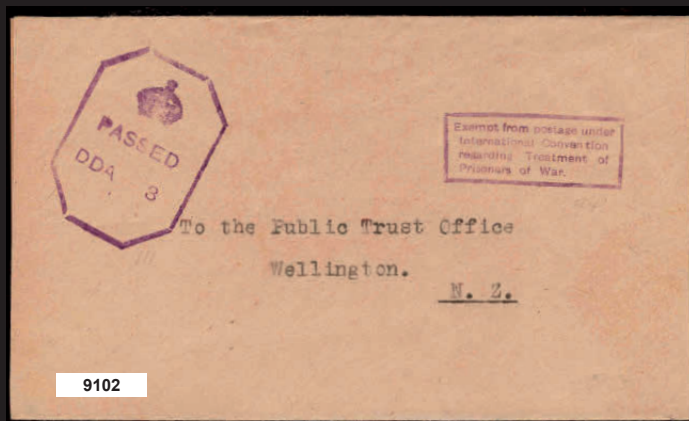
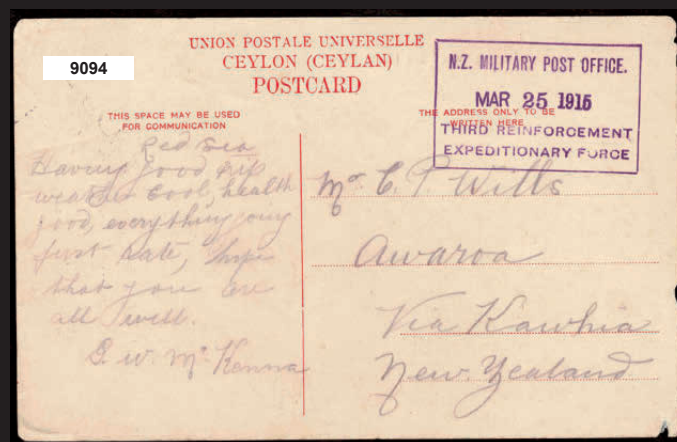
EST. 1974

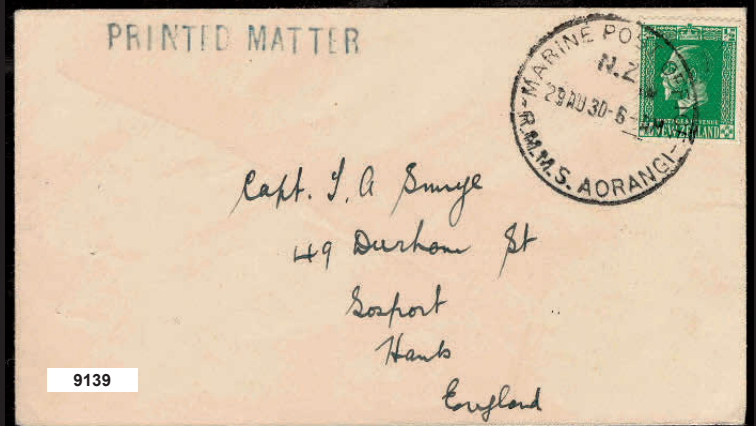
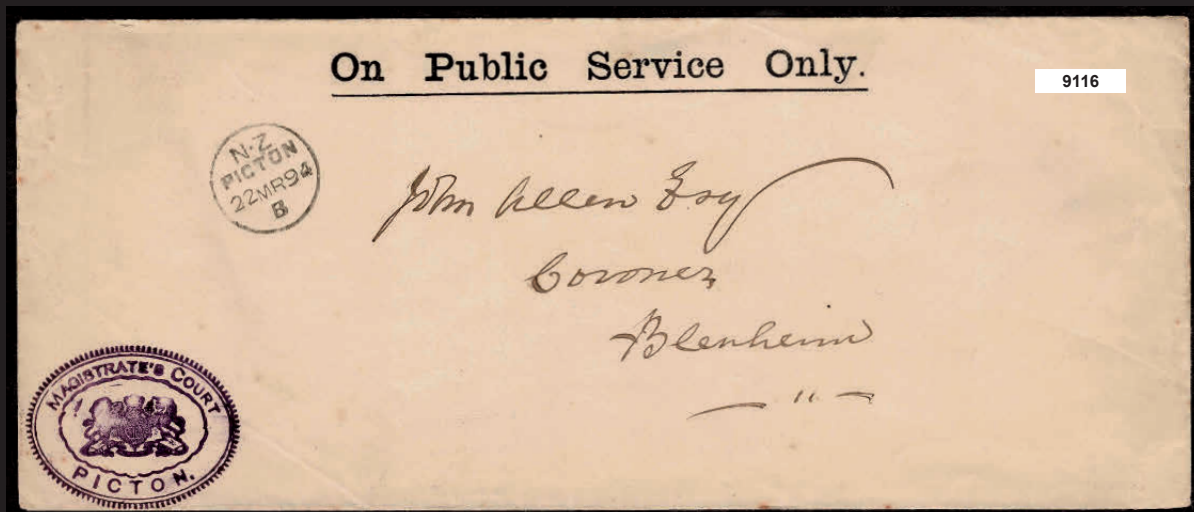
Licensed Auctioneers

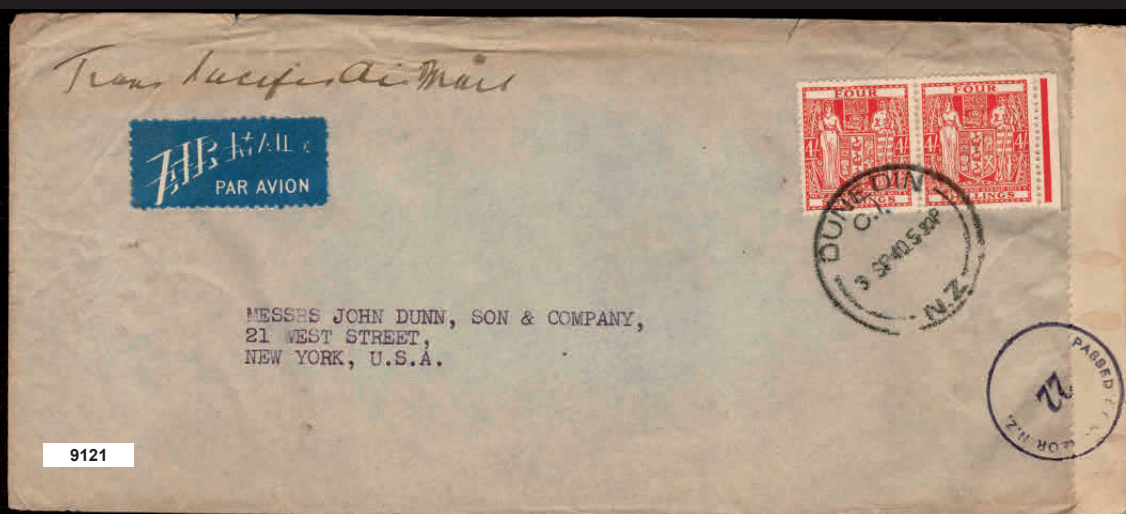
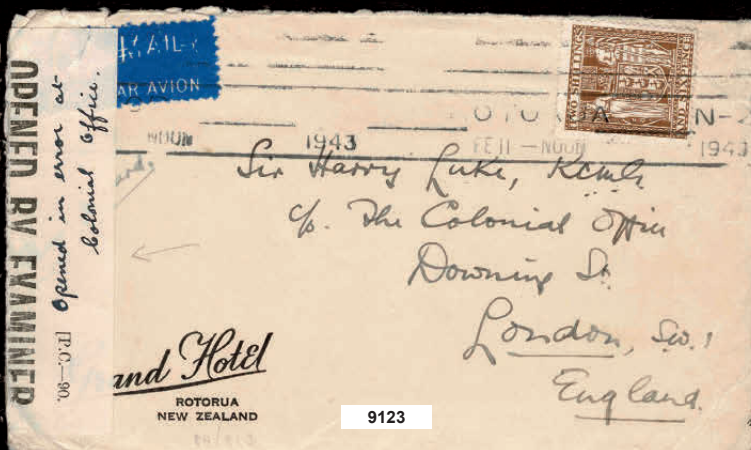
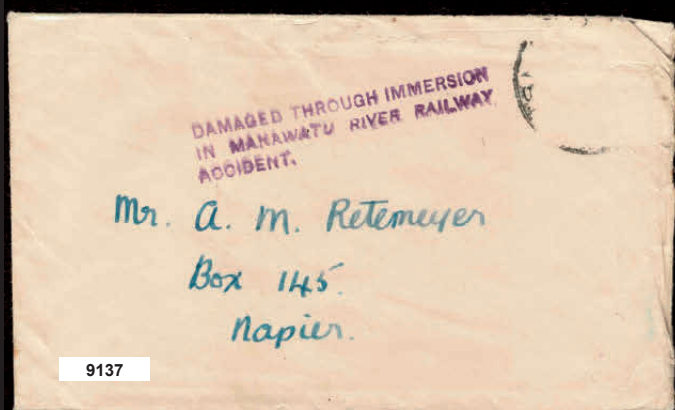


www.aucklandcitystamps.co.nz













9002



9042



9033



9030



9029

- Plate 18 -

Auckland City Stamps

EST. 1974

Licensed Auctioneers



www.aucklandcitystamps.co.nz