

PUBLIC AUCTION NUMBER 13

AUCKLAND, 12.30PM SATURDAY SEPTEMBER 2, 2017

Auckland City Stamps, 1 Ngaire Avenue, Newmarket.



381



384



393



649



509



515



526



EX 694



285

Auckland City Stamps

EST. 1974

Licensed Auctioneers





282



Ex 288



291



290



289



296



Ex 294



Ex 297



Ex 306



Ex 307



Ex 313



310



Ex 314



311



312



Ex 321



Ex 327



329



Ex 332



Ex 360



372



371



373



374



375



376



383



397



387



Ex 390



389



396



392



391



394



Ex 398



Ex 399



404



408



Ex 409



412



413



414



415



416



418



422



423



424



425



429



Ex 432



Ex 435



456



Ex 454



460



462



Ex 463



Ex 465



Ex 466



471



472



475



Ex 476



Ex 478



480



481



Ex 490



491



Ex 492



Ex 493



Ex 494



495



Ex 497



502



Ex 504



505



506



508



511



512



513



514



516



517



518



521



523



524



525



531



529



532



533



534



537



538



539



540



543



544



546



547



549



551



552



528



553



555



Ex 556



541



557



558



559



560



Ex 562



564



566



568



572



574



575



576



578



582



Ex 583



584



586



587



591



593



597



608



609



616



626



635



640



629



Ex 644



656



Ex 651



650



662



669



668



670



675



665



676



699



678



685



712



683



730



732



704



703



734



735



733



737



738



741



742

AUCKLAND CITY STAMPS PUBLIC STAMP AUCTION

SATURDAY SEPTEMBER 2, 2017 - COMMENCING 12.30PM
AUCKLAND CITY STAMPS, 1 NGAIRE AVENUE, NEWMARKET.

Welcome to Auckland City Stamps Public Auction 13 - the second of our two annual Public Auctions. This auction contains 919 diverse lots of worldwide stamps, collections and postal history from more than 60 vendors, with estimates of around \$500,000.00. The auction is distributed to thousands of clients worldwide via this printed catalogue as well as being available on line via our website which is promoted internationally and via our own secure electronic database of worldwide collectors.

The Auction starts off with 72 Box Lots and the highlights includes Lot 48 - Great Britain QE Booklet Collection (Est \$4000) and Lot 58 - New Zealand Box Lot (Est \$1250).

In the Collections Section the highlights include Lot 98 Germany Stockbook (Est \$2500), Lot 103 Germany 3rd Reich Collection Used (Est \$1500), Lot 120 New Guinea Collection (Est \$2500), Lot 126 a Large NZ Collection (Est \$9500), Lot 130 NZ 1898 Specialised Collection (Est \$3000), Lot 152 NZ Full Face Queen Cover Lot (Est \$1000), Lot 158 NZ KGV Collection (Est \$1250), Lot 182 NZ Postmark Lot (Est \$1000), Lot 211 Russia Collection (Est \$1000) and Lot 257 World Triumph Album (Est \$1250).

In World Stamps the highlights include - Lot 285 Australia Antarctic 1921 Loose Ship Letter/MacQuarrie Island Postcard (Est \$1500), Lot 296 Australia 1902/04 10/- Postage Due Mint (Est \$2000), Lot 330 Cook Islands Unadopted Design (Est \$1000), Lot 359 Gilbert & Ellice Is 1908 SS Aeon Wreck Cover (Est \$900), Lot 381 GB QV 10d Embossed Mint (Est \$1500), Lot 384 GB QV £5 Orange Used (Est \$4500), Lot 393 GB £1 Seahorse Unhinged (Est \$4500), Lot 397 GB £5 Telegraph Used (Est \$2000), Lot 414 KUT 1895 British East Africa 4 1/2a Brown-Purple SG 39b Mint (Est \$1000) and Lot 429 Nauru 10/- Seahorse Treble Overprint, 2x Albino (Est \$1500).

In New Zealand Stamps the highlights include Lot 509 FFQ 1/- Bisect Cover (Est \$10,000), Lot 515 FFQ SG 1 Used (Est \$3500), Lot 522 FFQ SG 8a Strip of 3 on Cover (Est \$2000), Lot 526 FFQ 2d Pelure Imperf SG 82 Mint (Est \$5500), Lot 545 FFQ 4d Yellow on Cover (Est \$1500), Lot 556 FFQ Perforated Mint Set (Est \$3000), Lot 586 1900 6d Red Kiwi Official Offset (Est \$2500), Lot 629 1935 5d Swordfish Coil Pair (Est \$2000), Lot 649 8d Telegraph Error (Est \$3000), Lot 655 1960 4d Chalky Plate Block (Est \$7500), Lot 666 1971 One Ton Cup Drawings/Essays (Est \$4000), Lot 670 1970 4c Moth Offset (Est \$2500), Lot 680 1977 Silver Jubilee Min Sheet Silver Omitted (Est \$2000), Lot 694 Antarctica 1910 1/2d & 1d Victoria Land in Blocks of 4 Unhinged (Est \$5500), Lot 720 1931 Red & Blue Boys FDC (Est \$3750), Lot 765 Arms £2.10 Red Block of 4 unhinged (Est \$2250) and Lot 776 QV £1 Pink Official Strip of 5 piece (Est \$2500).

In New Zealand Postal History the highlights include Lot 792 FFQ 1862 Goldfields Cover (Est \$1875), Lot 796 FFQ 1868 Cover with 12x 2d Blues On Cover (Est \$2500), Lot 818 Antarctica Covers (Est \$2500), Lot 827 1885 Exhibition Wellington Cover (Est \$1250), Lot 838 1911 POW Cards to Motuihi Island (Est \$1000) and Lot 840 NZ French Hospital Card (Est \$1350).

As with our Postal Auctions, scans are available for most items - please contact the office as soon as possible with your requests to ensure that you have as much as possible to consider your bids prior to the auction.

There are several options for those wishing to view items prior to the auction. Clients can visit our Newmarket Offices by appointment anytime until 12 Noon Thursday August 31, 2017. Alternatively all lots will be available at the office for viewing as follows:

Friday September 1 8.30am - 4.30pm

Saturday September 2 8.30am - 12.00pm

For those unable to attend, there is a bid form included with this catalogue - please complete this as you would for one of our Postal Auctions and we will bid on your behalf on the day of the auction. It is vital that all Postal Bid Forms reach us no later than **10am, Saturday, September 2, 2017** - preferably earlier. Phone bidding is available on the day - please contact the office to arrange.

Another option for those unable to attend - the services of an independent auction agent, Mark Benvie, will be available at Public Auction 13. Mark is Past President of the New Zealand Philatelic Federation and The Postal History Society of New Zealand. You can contact Mark directly to represent you in the room at the auction as follows:

Mark Benvie Auction Agent

Mobile +6421 656 777

Email markbenvie@icloud.com

We wish you every success in **Auckland City Stamps Public Auction 13** and hope to see you in Auckland at **1 Ngaire Avenue, Newmarket, Auckland** on Saturday September 2, 2017.

David Holmes

Nigel Shanks

IMPORTANT INFORMATION FOR THOSE CONSIDERING ATTENDING THE AUCTION:

- The Auction Starts at **12.30pm Sharp**
- Auckland City Stamps, **1 Ngaire Ave, Newmarket**
- **Opening Prices** for each lot will be available to bidders in the room at 12pm
- All lots will be available for **viewing** at the venue as follows:

Friday September 1 8.30am - 4.30pm

Saturday September 2 8.30am - 12.00pm

- Please call the office on **0800 78 87 78** with any questions you have prior to the auction



PO BOX 99988 NEWMARKET AUCKLAND 1149 NZ › PH +64 9 522 0311 › FAX +64 9 522 0313
BID@AUCKLANDCITYSTAMPS.CO.NZ › WWW.AUCKLANDCITYSTAMPS.CO.NZ

PUBLIC AUCTION - CONDITIONS OF SALE

1. Postal / Absentee Bidding

All Bids must be made in New Zealand Dollars. Bids can be made above or below our suggested estimate. Most Reserves are set at 80% of estimate. We do not under any circumstances accept bids under 80% of the estimate. Buy Bids are NOT accepted in our Public Auctions. Successful bidders will pay the lowest possible price for any lot. Generally this will be either the reserve or one step above the second highest bidder. By placing a bid, the bidder is entering into a legal and binding contract to purchase all the lots won in the sale.

WE ACCEPT POSTAL BIDS BY:

Mail: PO Box 99988, Newmarket, Auckland 1149, NZ

Telephone: +649 522 0311 Fax: +649 522 0313

Email: hello@aucklandcitystamps.co.nz

Deadline

Postal / Absentee bids must be received no later than 10am (New Zealand time) Saturday March 18, 2017. Any mail, fax or email bids received after this time will not be included in the auction.

Postage & Insurance Costs

Without exception, every postal bidder's invoice will be subject to a modest postage, packing and insurance charge. Lots mailed to successful purchasers are covered by our insurance.

Phone Bidding

We can accept a limited number of phone bidders on the day of the auction. You must register as a phone bidder at least five days prior to the date of the auction identifying the lots for which you wish to make phone bids. We will do our best to call you so that you may bid by phone but accept no responsibility whatsoever should we not be able to make contact.

Auction Agent

If you would like to use an Agent to bid on your behalf in this Auction please contact Mark Benvie on markbenvie@icloud.com or on +649 302 2425 or mobile +6421 656 777.

2. Bidding In The Room

All prospective bidders must register on the day of the auction and receive a unique bidder number. Subject to any reserve price, the highest bidder shall purchase the lot. In the event of a dispute the Auctioneer reserves the right to withdraw the lot or to reoffer it. The registered bidder will be deemed to be the purchaser unless the auctioneer has been given a copy of written authority to bid on behalf of another person. Agents bidding on behalf of persons are personally liable for the payment of lots they successfully bid on. Agents bidding on behalf of persons are personally liable for the safe delivery of successful lots to their clients.

Opening Prices

Opening prices for all lots will be available to bidders in the room from 12pm on the day of the auction. Opening prices are calculated at either the reserve if there are no postal bids or one step above the second highest bidder.

Refusal

The auctioneer reserves the right to refuse entry to any person or to refuse bids from any person.

3. General Conditions Of Sale

Bidding Increments

These apply to Public and Postal Bidders but are subject to change at the auctioneers discretion.

Under \$500.00	\$10.00 Increases
\$500.00-\$1000.00	\$20.00 Increases
\$1000.00-\$2000.00	\$50.00 Increases
\$2000.00-\$5000.00	\$100.00 Increases
\$5000.00+	\$250.00 Increases

Guarantee

Every item is guaranteed to be genuine and/or as described. All descriptions of condition are opinion and based on our 30+ years of experience as professional stamp dealers.

Extension

Prospective buyers who wish to obtain an expert opinion on a particular lot (excluding collections or mixed lots) must notify Auckland City Stamps at least 7 days prior to the commencement of the auction. Should an extension be granted Auckland City Stamps will generally submit the item to either The Royal Society of New Zealand or The Royal Philatelic Society, London. Upon receipt of a clear certificate the costs of certification (including postage and insurance) will be charged to the buyer.

Catalogue Listings

When describing lots we generally use the latest edition of either The Auckland City Stamps Colour Catalogue of New Zealand Stamps, Stanley Gibbons World & British Commonwealth Volumes or The Campbell Paterson Catalogue Of New Zealand Stamps.

Return Of Lots

If you believe that a lot has been incorrectly described you must return it within 48 hours of receipt and if we agree with you a replacement or credit will be arranged. In the event of a dispute the opinion of a mutually agreed authority will be sought and such opinion will be final.

The following lots are not returnable:

- Items illustrated in the catalogue are not returnable for visible faults.
- Items that have been immersed in water or subjected to a chemical process subsequent to sale.
- Collection, accumulation and kiloware lots.
- Lots that have been inspected by the purchaser prior to the sale.

Photocopies / Scans

These are available for most lots free of charge. Please contact our office prior to the sale closing date with your requests.

We are unable to provide scans or photocopies of collection, accumulation or kiloware lots.

Viewing Of Lots

Lots can be viewed by appointment only at our offices before the auction or at the auction venue as follows:

Friday September 1	8.30am - 4.30pm
Saturday September 2	8.30am - 12pm

Prices Realised

All bidders, whether successful or not, will be sent a prices realised sheet after the sale closes.

Prices realised will also be available immediately after the auction and on our website within 48 hours of the sale closing.

Payment

Can be made by cash, cheque, bank deposit, bank draft, T/T, Visa, MasterCard or Amex

Successful postal bidders must pay their accounts within 7 days of receipt of invoice.

Successful attending bidders must pay their invoice and collect their lots on the day of the auction.

Time Payment

Time Payment may be available to clients spending \$2,000.00 or more in this sale. Please contact us with your time payment request prior to sending in your bids or prior to registering as a bidder on the day of the auction.

Failure To Pay

In the event that payment is not made in accordance with the above two clauses the Auctioneer reserves all rights to recover any moneys due, with interest in accordance with any applicable New Zealand laws.

Buyers Premium

The buyers premium is 12.5% on the hammer price of all lots in this public auction.

GST

New Zealand residents will have 15% GST added to the buyers premium only.

Acceptance

By placing a bid or bids (either on the day or in absentia) in this sale, the bidder irrevocably accepts and agrees to each of these terms and conditions.

New Zealand Clients Call (Toll Free) 0800 78 87 78

Overseas Clients Call +649 522 0311

Email: hello@aucklandcitystamps.co.nz

Ground Floor, 1 Ngaire Avenue, Newmarket, Auckland
PO Box 99988, Newmarket, Auckland 1149, NZ

www.aucklandcitystamps.co.nz



ABBREVIATIONS

**	Unhinged Mint	U	Used	Picts	Pictorials	Pl.Blk	Plate Block	ACS	AucklandCityStampsCatalogue
Unh	Unhinged Mint	GU	Good Used	Cat	CatalogueValue	C	Cover	CP	Campbell Paterson Catalogue
*	Mint	FU	Fine Used	incl	Including	env	Envelope	SG	Stanley Gibbons Catalogue
O.g.	Original Gum	CTO	CancelledToOrder	st/bk	Stock Book	FDC	First Day Cover	H&G	Higgins & Gage
Lm	LightlyHingedMint	L	Literature	m/s	MiniatureSheet	reg	Registered		
Hinge	Heavier hinge	P	Proof	Blk	Block	P/c	Postcard		
		Defs	Definitives						

BOX LOTS

1	*/U	A BLUE SUITCASE with Accumulation of NZ, Australia, UK, Pacific islands in a Dozen Albums, Stockbooks, Folders and loose in Packets (1,000's)	200
2	*/**/U	A GOOD SIZE BOX with World in Stockbooks/Albums. Large Range (1,000's)	400
3	*/U	A HUGE CARTON filled with smaller boxes of stamps off mail, Small World Album, Modest NZ Album, some East Germany etc (1,000's)	100
4	*/**/U	A LARGE BOX with World Stamps & Covers. Good Pickings (1,000's)	400
5	*/U	A LARGE GREY SUITCASE containing large numbers of NZ FDC's, small old-time World Album, used spares of Australia,UK,NZ on pages. estate clearance,take it away (21kg)	100
6	U	APPLE BOX contains 10 Albums - Australia (2), Canada (1), Great Britain (2), Pacific Islands (1), New Zealand (4). Most stamps are used early to modern (1,000's)	300
7	*/U	ARCHIVE BOX of Canada with Collection in Album from Earlies to Modern Mint & Used plus Year Albums 1986-95 and 2004-06 (100's)	200
8	U	AUSTRALIA Box Lot 1,000's of bulk off paper, some partly sorted, plus a few earlies on stock pages with Roos up to 5/- etc (1,000's)	100
9	C	AUSTRALIA Large Box Lot of FDC's odd Pre-decimals and a large range of Decimal Covers. (100's)	200
10	*/**/U	AUSTRALIA Large Carton mainly Modern Used, PSE's & FDC's. Good Pickings. some duplication (1,000's)	100
11	*/U	BOX LOT Australia, NZ, World in Albums & Boxes (1,000's)	100
12	C	BOX LOT Covers 1980/90's Commercial Mail to NZ from the Pacifics & Far East Area (500+)	100
13	C	BOX LOT Covers in Medium size box mainly Modern with Far East & Pacific commercial to NZ, some Modern China etc. Mixed condition (600+)	125
14	C	BOX LOT Covers in Photocopy Box with mainly Modern Pacific FDC's, Australia etc (450+)	150
15	C	BOX LOT Covers with a Worldwide Range (100's)	150
16	*/U	BOX LOT Early Strand Album with useful pickings Worldwide (2500+ stamps) plus choc box of stamps in packets, etc (1,000's)	200
17	U	BOX LOT Estate clearance incl Album 1882-1938 NZ Specialised used, 5 Stockbooks of other basic NZ, Small Old World Album, Canada Stockbook etc (1,000's)	250
18	C	BOX LOT Good Size Carton World Covers Early to Modern. Mixed Condition. Suit Internet/Reseller (700+)	250
19	*/U	BOX LOT Huge messy jumble of everything, World Albums, Covers, USA 1928-48 range Cat £65, Southern Rhodesia 1924-50 Range Cat £115 (100's)	200
20	*/**/U	BOX LOT incl NZ Presentation Albums, NZ Range in 3 Albums from earlies incl Blocks, First Day Covers. Useful Pickings (100's)	150
21	*/**/U	BOX LOT incl NZ Year Albums 1984,1988,1991,1992,1993,1994, Australian Presentation Albums, NZ Health Min Sheets, NZ Postmarks in Packets, Australia Stockbook & AAT Earlies to Modern, Bag NZ FDC's, NZ Postcards with NZ Postmarks. Useful lot (1,000's)	200
22	*/U	BOX LOT including Small World Album, Box of NZ with part sheets 1923 onwards, other boxes NZ & World (1,000's)	100
23	*/**/U	BOX LOT Mixed range incl Papua & New Guinea 7 Seas Hingeless Albums with some sets & singles, odd NZ Unhinged & FDC's, Tonga Tin Can Mail 1940 Cover, Tuvalu Sets & Packs etc. Some Pickings (100's)	150
24	*/U	BOX LOT Nasty mess of NZ & Worldwide in Large Carton, hours of sorting (1,000's)	100
25	*/U	BOX LOT Old Estate Carton with several World Albums. Green Album incl Australia 1928 3d Kooka Exhibition M/S (SG Cat £110), range early NZ from FFQ to 1920's (ACS Cat \$2000), shoeboxes & envelopes of NZ in mixed condition, hours of work (1,000's)	300

26	U	BOX LOT Stamps in Boxes & Packets, novice World Album, New Zealand Album Used/Fine Used with 2d Orange FFQ onward (Cat \$1750), old catalogues etc (1,000's)	300
27	*/U	BOX LOT Unremarkable Old Accumulation with World Album, NZ Album, Part Sheets, other mess (100's)	100
28	*/U	BOX LOT with 9 Stockbooks of NZ, UK, Papua & New Guinea, Tokelau, Worldwide (100's)	250
29	*/**/U	BOX LOT with a Range Albums/Stockbooks incl odd New Zealand, Nauru Collection in Seven Seas Album, Some NZ FDC's, Odd Jersey. Useful Pickings (100's)	150
30	*/**/U	BOX LOT with New Zealand Collection in 4 Albums Cat \$3500 from 1862 Imperf 2d FFQ Used, Perf 1d Orange Used, 4d Yellow Used, 6d Blue Very Fine Used, 1882 Second Sideface 8d Unhinged, various 1898-1907 Pictorials onwards. Two file boxes FDC's still in envelopes from NZ Post Office etc. (100's)	500
31	*/U	BOX LOT with Old Springback Album of World (2500 stamps) plus a range of random odds & sods (Approx 3000)	100
32	U	BOX LOT with Old World Accumulation in 165 envelopes contained in file box (100's)	100
33	*/**/U	BOX LOT World Stamps & Covers. Good Pickings (1,000's)	200
34	*/**/U	BOX LOT World Stamps & Covers. Good Range (1,000's)	100
35	*/**/U	CANADA Box Lot with 2x Modern Hingeless Albums with sets Mint & used, some year collections & FDC's Lots of value (100's)	100
36	*/U	CARTON with 7x Albums or Stockbooks plus box with Used New Zealand, Greece, range of covers etc (1,000's)	350
37	C	COVERS Large Box Lot 1970's/80's Mainly Pacific area Commercial & FDC's, GB FDC's etc. Mixed condition (700+)	150
38	*/**/U	DEALER'S STOCK Box Lot SAMOA Stockbooks earlies from Palm Tree issues in 2 Stockbooks all priced and a duplicated Range Mint & Used. Also Stockbook Mint Sets (with some toning). Useful Early Pickings (1,000's)	300
39	*/**/U	DEALER'S STOCK Box Lot with NORFOLK ISLAND Stockbooks 1947-1990's Much duplicated range Mint & Used. Good Pickings (1,000's)	250
40	*/**/U	DEALER'S STOCK Box Lot with PITCAIRN ISLAND 1940-2000's Stockbooks Mint & Used Duplicated Range all Priced. Good Pickings (1,000's)	400
41	*/**/U	DEALER'S STOCK Box Lot with Stockbooks of Christmas & Cocos Islands, Nauru, Tokelau Islands, Cook Islands in 2 Stockbooks incl Aitutaki & Penrhyn Islands. Earlies to Modern. Much duplication and priced. Good Pickings (1,000's)	450
42	*/U	ESTATE CLEARANCE Small suitcase stuffed full with 15 Albums & Folders including NZ, Aust, UK, Pacifics, a little World. Best stamp noted 1931 2d Blue Boy thinned (many 100's)	150
43	**	GREAT BRITAIN 2x Boxes with 16x Yearbooks, Box of Presentation Packs plus folders of Machins. Also GB & Isle of Man Albums. High Face Value (100's)	500
44	**	GREAT BRITAIN Box Lot 1970-2010 with 5x Albums, 1x Stockbook & Box of Presentation Packs of Decimal Definitives & Commemoratives. Face Value £920+ (100's)	500
45	**	GREAT BRITAIN Box Lot Machins housed in 5 Stockbooks & 1x Folder - 2 Stockbooks with singles all identified and displayed; 2x Stockbooks of Plate Blocks & 1x Stockbook of Regionals and lastly 1x Folder of Packs. High Catalogue Value. Fine Lot (1,000's)	1500
46	U	GREAT BRITAIN Box Lot with 7 Albums/Stockbooks from Earlies to Modern (100's)	100
47	C	GREAT BRITAIN Large Box FDC's in 6x First Day Cover Albums. Huge Number and Catalogue Value (100's)	200
48	**	GREAT BRITAIN Large Collection of GB QE Booklets in 5 Filing Boxes and all in individual packets. Retail Cost \$12,000+ (100's)	4000
49	*/**/U	LARGE BOX LOT of folders QV to Modern Used with much duplication. Some in Stockbooks and One Album. Noted some World in folders. Hours of Fun (1,000's)	250

50	**/*	LARGE BOX Lot with United Nations Books & Folders. Comprehensive range. Some Thematics (100's)	200
51	**/*/U	LARGE CARTON World Mix with Great Britain & Commonwealth Mint in Stockbooks, foreign on pages, covers and some loose in packets. Some NZ Postmarks etc (1000's)	400
52	**/*/U	LARGE CARTON. Messy lot with ranges of GB & Australia, NZ KGVI better values on paper (1,000's)	200
53	**/C	MALAYSIA & SINGAPORE Large Box Lot of 23x single Pocket FDC Albums & 7 Folders of Stamps, FDC's & Presentation Packs from the late 1950's to 2000's. Condition varies with some light staining on earlies. Good Pickings (100's)	500
54	C	MILITARY Good Size Shoebox with Worldwide Range of Military Covers 1900's-1950's with FPO's, censors. Mixed Condition. Suit internet/reseller (650)	250
55	**/*/U	Mixed Lot includes 2x GB Stockbooks mainly Decimals but incl 1953 QE Set plus a World range in Packets Mint & Used (100's)	150
56	C	New Zealand Accumulation in Filing Box with Return To Sender markings on Cover incl from Overseas mostly large size used for mailing Auction Cats. Great variety of stamps (150+)	75
57	C	NEW ZEALAND Alternative Mail 2005-2007 Range of Commercial Covers with a wide range of alternative post stamps (1000+)	100
58	**/*/U	NEW ZEALAND Box Lot from Full Face Queens to Modern mainly on Stockcards incl Imperf & Perforated Full Face Queens Used, Odd Mint, 1/2d Newspaper Mint & Used, 1898 Pictorials, 1925 Dunedin Exhibition, QE period, Healths, Postal Fiscals, Postage Dues & Revenues. High Catalogue. Mixed Condition but good pickings (1,000's)	1250
59	**/*/U	NEW ZEALAND Box Lot Healths in Stock Sheets, NZ on Stockcards of Earlies, Old Postcards in Packets, Alternative Posts, Cinderella range NZ in Packets, KGVI on Pages, 1d Dominion Plates 12 & 13 reconstructed Sheets Used, Postmarks, Odd Books. Real Mixture. Some Pickings (100's)	500
60	**/*	NEW ZEALAND BOX LOT Mint Collection from 1898 Onwards in 3x Lighthouse Stockbooks. ACS Cat \$1500 (100's)	200
61	U	NEW ZEALAND Box Lot Used Collection 1873-1999 in 5 Large Lighthouse Stockbook, often with up to 3 sets of each Fine Used, big lot for internet seller perhaps. ACS Cat \$5000 (100's)	800
62	**/*/U	NEW ZEALAND Box Lot with a Range of Min Sheets incl Health, some FDC's, Postal History, Folder Mint & Used Earlies to Modern, Mint Blocks in a Folder, 1985 & 1986 Yearbooks plus Album Mixed lot. Good Pickings (100's)	400
63	U	New Zealand Box with On & Off Paper Early Range from low value 2nd Sidefaces, 1898 Pictorials to 9d, Large Range 1d Universals & 1d Dominions, KEVII Range to 1/-, KGV Range to 1/-, 1920 Victory to 6d. Housed in Plastic sleeves and in Packets. Also 3 pages NZ Adverts incl 1d Blue's. Mixed condition. Many large pieces. Great Lot with hours of fun. Some Postmarks on Pages with some good cancels. (1,000's)	750
64	C	NEW ZEALAND Carton 1880-1915 of Invoices, bills, letterheads (Dunedin firms) many with 1d 2nd Sidefaces, Universals etc as receipts. Mixed condition but an interesting lot (many 100's)	100
65	C	NEW ZEALAND Envelope Box with 1985 Registered Covers (mainly small size) from a wide range of Post Offices (450+)	100
66	C	New Zealand Filing Box with Private and NZ Post stamps on Covers 2010-2012 era with NZM, Kiwi, Fastway, Croxley etc (350+)	50
67	U	NEW ZEALAND KGVI Kiloware in Large Carton (2.5kg)	100
68	U	NEW ZEALAND POSTMARKS Banana Box with Album Pages with some remnants KGVI to 1970's Covers, pieces many in folders from many Post Offices. Some slogan material. Some cancels. Hours of Fun (100's)	150
69	*/U	RAILWAY 4 Messy Stockbooks of Railway Thematic Worldwide, mixed condition, noted range Belgium Railway Parcel stamps (100's)	75
70	**/*/U	SUITCASE NIGHTMARE World in several choc boxes, old remaindered Globe Album, New Zealand 1953-75 Unhinged in Hingeless Album (Cat \$1250), Albums FDC's etc (1,000's)	250

71	* / U	SWITZERLAND Box Lot of 9 Stockbooks Earlies to Modern. Ex Dealer's Stock with a mainly Used duplicated Range. Some Pickings (1,000's)	300
72	* / ** / U	WORLD THEMATICS Flora & Fauna incl 1982 Birds & Flowers Set on Cards, 2x Albums FDC's with a World-Wide range, Folder Dinosaur Sets unhinged. Real Mixture incl Aerogrammes all related to the theme (Several 100)	200

COLLECTIONS & ACCUMULATIONS

AUSTRALIA

73	U	1913-2001 Collection in Davo Printed Alum containing a Range of Roos & KGV. Has £1 & £2 Specimen Roos Mint No Gum. Also 1914 6d Kooka, 1930 Range of Commemoratives, 1937 £1 Robes, 1949/50 Arms, 1963/64 £1 Navigator. Also Decimals & AAT issues. Condition varies on the earlies (100's)	250
74	U	Australian States on Album Pages. Good Range of all States. Good lot to expand (100's)	500
75	**	BOOKLET Folder 1960's-2000 x 123 mostly different and odd CTO. Face Value A\$450+. Also 2x Stockbooks Mint Pre-Decimals & Decimals Mint and a 2nd Stockbook Decimals Used (100's)	300
76	* / U	KGV 4 1/2d Violet Specialised Collection on Album pages all annotated varieties with illustrations nearly all Used. Great lot for an exhibit and to add to. (100)	950
77	* / ** / U	Two Stockbooks - 1x Used with Useful Australian States Used incl Queensland 1d SG 1; Some Kangaroos & KGV incl OS's. Range of Commems onwards. Also 1x Stockbook with a range of Mint. Condition varies (100's)	500

AUSTRALIAN ANTARCTIC TERRITORY

78	* / ** / U	Stockbook 1957-2001 Mint & Used Range incl 1966 Decimals Set Unhinged. Also odd Covers and a range of Packs. Plus odd British Antarctic sets (215 stamps plus 19 FDC's/Packs)	75
----	------------	---	----

AUSTRIA

79	* / U	Collection 1850's-1930's on Printed Album Pages Mint & Used range incl 1935 Definitives Set Mint, 1931 Rotary Set Mint, 1910 80th Birthday Set Used, 1908 60th Anniv Emperor's Accession Set U, a good range early issues both Mint & Used. Great lot to expand. Cat £2700+ (Several 100)	750
80	* / U	Collection Pre 1940 on album Pages plus Luxembourg Good Pickings (100's)	500
81	U	Stockbook Earlies to Modern Good Range (100's)	250

BELGIUM

82	* / U	1850-1950 Stockbook 8 Page with Useful Range Mint & used incl Railway stamps, Occupation issues. Good Pickings (Several 100)	150
83	* / U	Collection Pre 1940 on Album Pages plus Netherlands Mint & Used. Good Range (100's)	300

BULGARIA

84	* / U	Collection Pre 1940 Collection On Album Pages plus Roumania range (100's)	150
----	-------	---	-----

CANADA

85	**	BOOKLET ALBUM 1940's-1995 incl SG SB42. Odd CTO. Clean Lot. Face Value C\$190 (72)	150
86	* / U	Revenues Collection on Hagner Pages incl Ranges of War Tax, Excise Tax, Postal Note, Customs Duty, Tobacco, Cigar, Cigarettes, Electricity & Gas Inspection, Electric plus range of Precancels & Postal Stationery cutouts. Worth Inspection (100's)	250

CHINA

87	U	Modern Stockbook China & Taiwan Duplicated Range Definitives & Commemoratives (100's)	50
88	* / U	Stockbook Earlies to Modern. Pickings (Several 100)	100

COCOS (KEELING) ISLAND

89	* / **	1976-2010 Collection in Warwick 55 Album Mostly Unhinged with a good Range Definitives & Commemoratives (100's)	200
----	--------	---	-----

CYPRUS

- 90 U 1934-1960's Collection On Album Pages incl 1928 Set to 18p, 1934 Pictorials Set, 1938 KGVI Set, 1949 Silver Wedding Pair, 1953 QE Definitives, 1960 Republic Definitives etc Good condition (124) 500

EGYPT

- 91 U 1922-1950's Collection on Album Pages with a good range sets & singles (260) 200

FIJI

- 92 */**/U Collection on Hagner Pages KGV to Modern Mint & Used with Definitives & Commemoratives. Useful Pickings (100's) 150

- 93 */U Stockbook QE Period Duplicated Range Mint & Used Sets & singles to 1980's. Some in blocks. Odd FDC's (100's) 150

FRANCE

- 94 */U 1850-2001 2x Davo Printed Albums. Mostly Used with a good range of Sets & Earlies. Good Pickings (2500+7M/S) 400

GERMANY

- 95 C 1860's-1930's Range of Covers & Postal Stationery incl some Early German State Covers & Printed Cards incl 1867 Prussia 3k Wrapper, 1872 1gr tied by Munster boxed cancel entire, Range of Inflation Period Cover incl some Large Frankings, 1939 Air Cover to China. Mixed condition (52) 500

- 96 U 1870's-1900 Stockbook of Earlies used with some good early 1870's issues (Several 100) 500

- 97 */U 1872-1940 Collection Mint & Used on album Pages Good Pickings & odd Saar. (100's) 500

- 98 U 1900-1940's Large Duplicated Specialised Stockbook. Value in the specialist early period all annotated. Great lot to work on and add to. Hugh Catalogue Value (1,000's) 2500

- 99 C Accumulation Covers or Postcards from Prestamp to WW2 with a range WW1 POW Covers and 1920/30's Meter Covers Good Range (97) 250

- 100 U (Berlin) 1948-1974 Collection in Lindner Hingeless Album. Not complete but has the 1949 Red Berlin Overprints Set Cat £1000 and has most of the early sets. Good condition (100's) 400

- 101 U German States Collection on Album Pages incl Baden, Bavaria, Hamburg, North German Confederation, Prussia, Saxony, Thurn & Taxis, Wurtemberg. Good Range (Several 100's) 500

- 102 */U Germany & States Large Stockbook incl Baden, Bavaria, Colonies, Danzig, Cinderellas, Mint & Used range. Good Pickings (100's) 1500

- 103 U Third Reich 1933-1945 Collection On Album Pages incl '33 Chicago Zeppelins Set, 1934 Opera Set, 1934 Airs etc. Good condition. High Catalogue (Several 100) 1500

GERMANY - WEST

- 104 U 1949-1974 Lighthouse Hingeless Album with a nearly complete collection. High Catalogue (100's) 400

- 105 */** 1949-2001 2x Lighthouse Hingeless Albums Mostly Unhinged including the Scarce 1949 & 1950 issues (No 1951/52 Posthorn issues) Not complete but all in good condition. High Catalogue (100's) 600

GIBRALTAR

- 106 */**/U 1898-1995 Collection in 5x Warwick 55 Albums plus Surplus Sets and singles in a 24 Page Stockbook incl 1898 Definitive Set Used, KEVII 1904/08 2/- Used, 1921/27 KGV Definitives Set to 4/- Used, 1960/62 Definitives Set Used, 1967/69 Ship Definitives Set Unhinged & Fine Used. Comprehensive range of Definitives & Commemoratives. Clean Lot (100's) 500

GREAT BRITAIN

- 107 */**/U 1840-1969 2x Linder Hingeless Albums Range of QV Used incl 1883 10/-, KEVII & KGV Used, 1937/39 KGVI Definitives unh incl 10/- Dark Blue, 1951 Festivals Set unh, QE Range of Definitives & Commemoratives incl diff specialised sets. Mostly fine. High Catalogue (100's) 750

108	**	2001-2008 Smilers Sheets in Presentation Album Retail NZ\$1500	500
109	U	POSTMARKS QV to QE Range in 8 Page Stockbook incl higher values. Noted Guernsey 1941 2d KGVI Bisect. Useful lot (Several 100)	100

GREECE

110	*U	1860's-1960's Good Collection on Album Pages with many better sets & singles. Good condition. (100's)	500
111	*U	Large Collection from 1861 in 2x 32 Page Lighthouse Stockbooks, 1x 8 Page & 1x 16 Page Stockbooks of Duplicates, 1x Stockbook Occupation issues. Also envelope of Covers & Postcards. Mostly Used from Imperfs with a range of different values, 1933 Zeppelin Set Mint. A good range of modern issues. Some useful Occupation issues. (1,000's)	900

IRELAND

112	U	1922-2002 Davo Album with a Useful range of Sets & singles. Odd Min Sheet (1200+6M/S)	300
113	*/**/U	1922-2004 3x Albums with a comprehensive range from 1922 Overprints incl SG 30/43 Set Cat £200 Used, 1922/23 KGV Set to 5/- SG 52/65 Used. Mixture Mint & Used Sets. From 1981 onwards Mint in hawid mounts. (100's)	750

JAPAN

114	*/**/U	1871-2005 Collection in 8 Printed Hingeless Albums plus 2 extra binders with a Range of Mint & Used Sets, singles and Min Sheets. Some Pickings. Great lot to expand. Odd toning (100's)	500
115	*U	1872-1950 8 Page Stockbook Mint & Used Range with useful range, some Revenues. Worth Inspection (Several 100's)	250

KENYA UGANDA & TANGANYIKA

116	*/**/U	1935-1973 Collection in Album incl 1933 KGV Definitives Used, 1938 KGVI Definitives Set Used, 1954/59 QE Definitives Set Used. Good condition. (260)	750
-----	--------	--	-----

MALAYSIA

117	*/**	Dealer's Stockbook 1960's-1990's Good Range Sets Priced to sell at \$1695 (100's)	350
-----	------	---	-----

MONACO

118	**	1967-1982 Collection Unhinged Sets & Min Sheets all in hawid mounts in KABE Album. Fine lot including many good thematic sets. Cat £2000+ (100's)	750
-----	----	---	-----

NETHERLANDS

119	*U	1852-2007 2x Davo Albums with some Earlies in mixed condition incl 1913 5g Yellow, Child Welfare Sets mostly Used. Many later sets Used. High Catalogue Value (1700+36M/S)	450
-----	----	--	-----

NEW GUINEA

120	*/**/U	1900-1940's Collection in Album incl German New Guinea 1897 Ovpts U, 1914 GRI Overprints Mint to 3d & 2 1/2d Used, Marshall Island GRI Ovpts to 8d Mint, Some NWPI, Huts OS Set, Birds Undated Range to £1, 1932 Birds Airmails Undated 10/- & £1 Used, 1/2d Bird Error Mint, 1935 £2 Bulolo Used, Queensland 2d & 2 1/2d with part 'BNG' cancels, Range of Lakatois, 6d Brown with TAX cancel, later Papua issues, odd WW2 Covers. Condition varies Cat £5000+ (100's)	2500
121	*U	Stockbook 16 Page Good Range incl 1d used & 1/2d Mint Printed Postcard, Range New Guinea & Marshall Islands Yachts Mint, NWPI KGV range mainly Mint, Range Huts, Birds Of Paradise Mint & Used Range to 2/-, Bulolo Airmails to 5/-, Papua Lakatois Range & Later values Mint & Used. Odd PNG incl Set '60 Postage Dues Used. Condition varies. Good Pickings (100's)	500

NEW SOUTH WALES

122	U	Revenues 1929/1966 Range of Stamp Duties stamps on Album page incl pre Decimals Range to £50 with a good range of values and colours (33) incl 30/- Blue, £5 Brown, £10 Green, £10 Dull Green single & pair, £50 Lake; Decimals values to \$20 (28) Nice range (61)	200
-----	---	---	-----

NEW ZEALAND

123	*U	1855-1960 Album with Full Face Queens Imperf & Perforated Range (37), 1st & 2nd Sidefaces, 1898 Pictorials, KGV, 1960 Pictorials. Mostly used. Mixed condition. High Catalogue (100's)	350
124	U	1855-1980's Collection incl Imperf Full Face Queens (8), Perforated (25), 1st Sideface Set to 5/-, 1906 6d Christchurch Exhibition, 1931 Red & Blue Boys. odd blemish but clean lot. High Catalogue (100's)	1500
125	U	1855-1990's 3x Albums includes Full Face Queens Imperf Set, Perforated Set, 1874 1st Sideface to 2/- (2/- fiscally used), 1898 Pictorials, KGV, 1926 2/- Admiral Official, 1931 Red & Blue Boys, some specialist printings from earlies. Comprehensive lot. High Catalogue value (100's)	1750
126	*/**/U	1855-1990's Comprehensive Collection housed in 13 Stockbooks from Imperf Full Face Queens incl Imperf 1d Orange SG 8 Mint (thin), Used values to 1/-, 2nd Sideface 3d Yellow Advert Pair unh, 1898 Pictorials 3d,4d & 6d unh, 5/- Mint, 1906 Christchurch Exhibition Set unh, 1920 Victory Set unh, 1958 2d Stars unh, 1967 1/2c Block of 4 Misplaced Design, Later Definitives & Commems in Plate Blocks (Face Value \$2500+), Healths, Officials, Arms incl 12/6 Plum Mint, Life Insurance 1891 1/2d unh, 1d,3d,6d Mint, Also 2x 1937 Health Illustrated FDC's Rated 8, 1939 Express FDC & 1937 Express Cover. Huge Value (1,000's)	9500
127	*/**/U	1855-2000's Comprehensive Collection in 5 Albums & 6 Stockbooks from Full Face Queens Imperf & Perforated incl 1d SG 33, 6d SG 42 & 43, 6d SG 13, 1/- SG 46, 2d SG 2, 1/- SG 17; Range Perforated FFQ's incl 2d Blue double perfs Used, Good Range Sidefaces, 1898 Pictorials, KGV Onwards. Mixed condition. Recent Decimals Face Value \$1500+ (1,000's)	2000
128	*/**/U	1862-1990's Collection in 5 Stockbooks Mint & Used incl 1862 Perforated Full Face Queens 1d Brown, 2d Blue, 3d Mauve & 4d Yellow Mint, 1st Sideface 2d Rose & 4d Maroon Mint, 2nd Sideface Mint, 1898 Pictorials Mint, KGV Recess & Surface Mint, 1935 Pictorials Mint. Good range. Some later duplication used. Good Pickings. Odd blemishes (1000's)	1500
129	*/**/U	1874-1960 Stockbook Useful Range of mainly Definitives in Hawid Mounts incl 2d First Sideface Pnearly12 CP C2d Used, a few Advert stamps, 1898 2 1/2d Wakatipu P14 CP E8d(1) unhinged, 4d Terraces CP E11a(2) unhinged, 6d Green Kiwi CP E14d(1) Mint, 1898 Officials 5/- Mt Cook Mint, 1d Universal Booklet Pane Unhinged, 1d Univ Slot Machine CP GS1a Used, 1913 3d Auckland Exhibition Mint, KGV Officials 8d Brown & 9d Olive Mint, 2/- Admiral Official Mint, 1935 Pictorials range, 1953 10/- Queen Unhinged, 1964 3d Road Safety double perfs unh, Arms 12/6 Plum Mint with toning. High Catalogue and good pickings (235)	1500
130	*/**/U	1898 Pictorials Specialised Collection Mint & Used on Album Pages Range 1/2d to 5/- with different printings on Stocksheets incl 5d London Sepia shade Used, 5/- Mt Cook London Print Mint & used, 6d Green Kiwi P11 Mint & Used, 5/- Mt Cook P11 No Wmk Mint, 1d Terraces Double Perfs Used, 5/- P11 Wmk P11 Upright Mint & P14 Sideways Mint & Used. Odd blemish. CP Cat \$20,000 (247)	3000
131	*/**	1900/1909 Specialised Range of 1/2d Mt Cook, 1d Universals & 1d Dominion all on Hagner Sheet or Stocksheets with some better printings, varieties and booklet items. All anotated with CP Numbers. STC CP Cat \$7250 (160)	1000
132	U	1906-1980's Collection on Hagner Pages some later issues duplicated. incl 1906 Christchurch Exhibition Set, 1913 Auckland Exhibition Set, 1920 Victory Set, 1925 Dunedin Exhibition Set. Good condition (100's)	1000
133	U	1926 1d Field Marshal Accumulation of mainly NZ Postmarks, boklet singles etc noted some Closed PO's (Several 100)	100
134	C	1935-1980's Range of First Day Covers & Commemorative Covers. Mixed Condition. Some Pickings (150+)	300
135	*/**/U	1953-59 QE Definitives Collection in Warwick 55 Album with Plate Blocks 1953 Range to 10/- Queens, Mint & Used singles and shades, Some Coils, Booklet Panes. Also 1955 Large Figures Plate Blocks to 8d, 2d Stars Error Unhinged, Officials Plate Blocks to 1/-. High Catalogue (1000's)	1000
136	C	1988/89 NZ Document Exchange Collection of Proofs, FDC's & Booklets. Nice lot with much information. A great lot to exhibit	200
137	**	1995/2015 Collection of 50x Limited Edition Min Sheets. Also 1998 Pictorials Set in Special Sheets of 25, Lord of the Rings Numbered Sheets, 2005 Stamp Anniversary Sheets. (55 other items) Nice Lot with a Very High Catalogue (105 Min Sheets/Items)	750

138	U	1d Dominion & Officials in Packed Chocolate Box good for a specialist(1,000's)	75
139	U	Accumulation 1957/2004 Sets Fine Used incl 1957 x20, 1972 x20, 1982 x50 incl Plate Blocks, 1994 x20, 1995 x8, 1996 x28, 1997 Wildlife x16, 1999 Skies x9, 2000 x9, 2001 x6, 2002 x5, 2003 x15, 2004 x10. STC \$2750+ (100's)	200
140	U	ADVERTISEMENT STAMPS - Hagner Page - All 1d's or 2d's (except for 1x 2 1/2d) Mostly Red/red-Brown/Mauve. Good Range of advertisements. Some faults (64)	150
141	U	BOOKLETS 1993-1999 with a Face Value \$1200 all CTO 12 different incl \$1 Round Kiwi & 1998 Health (68)	400
142	**	Cafe L'Affare x 32 set in Corner Blocks of 4, 2005 North Shore Exhibition x 5 sets in Blocks of 4, 2006 Kiwipex x 2 Sheets (20 Sets) + 5x sets Fine Used, 2007 Northland Stamp Show 4 Sheets + 5 sets x 2 values - 55 sets, 2007 Scout x 100 sets (2 Sheets of each value. Face Value \$250	90
143	**	CALS Hell Pizza (30xunh & 2x Used), 2005 North Shore Exhibition x10 sets in Blocks of 4 with gutter pair of 2 values, 2006 Kiwipex Sheet of 10 sets, 2007 Northland Stamp Show sheet 2v - 125 sets, 2007 Kiwi Stamp Circuit Dominion Centenary 1st Print x60, 2nd x100, 2007 Scout Centenary 2 Values in Sheets of 50, 2008 Tarapex - 42 sets. Face Value \$400+	150
144	*/**/U	CHRISTMAS 1960-1994 Collection in 2x Warwick Albums Mint, Used & Plate Blocks plus surplus Stockbook. Face Value \$900. Condition varies in the Stockbook (100's)	450
145	*/U	Cinderella & Revenues Range from Earlies to Modern incl 6d Red National Savings x 2, NZ Insurance Co 100 Years 1959, 3x Hay's Centennial Railway labels (faults), Come & See me Soon South Island, Travel labels & tickets, NZ Railway Newspaper range. Mixed condition. Some pickings (Several 100)	250
146	*/**	COILS QE to 1970 Range on Album Pages & in hawid mounts. Some sets, some incomplete. Also some album pages with 1d Universal varieties. Interesting lot. Worth inspection (Several 100)	400
147	U	Dealer's Stock 1960 to 2009 some hundreds in 2 Shoeboxes Good to Fine Used. Also a range of Postage Dues 1899-1939 and some Arms (hundreds)	100
148	**	DECIMALS Range with most values over 50c. Face Value \$245	100
149	C	DUNEDIN Post Office Collection on Hagner Pages from Earlies to Modern incl Advertising Covers, Slogan Covers, Postcards, Registered labels, Special cancels, a few early covers. Great lot to expand (100's)	250
150	**/C	FDC's 1941-1994 2x Albums with Definitives & Commemoratives plus Stockbook KGV to QE Definitives & Commemoratives. Useful Range (100's)	150
151	C	FIRST SIDEFACE POSTAL HISTORY COVER LOT incl 1d Lilac x 13 incl 3x 1d rate, 7 x Pairs, 1x Strip of 4, 1x Block of 4; 2d Rose 5x singles, 1x Pair & 1x Strip of 3; Part Front with 4d & 6d postmarked with 'Dunedin' Obliterator & Registered/Dunedin datestamp; 6d Blue Pair Also 6d 2nd Sideface on 1884 Mourning Cover and 2x Victorian 2d Covers to NZ. Range of cancels and markings. Condition varies (25)	500
152	C	FULL FACE POSTAL HISTORY Accumulation - Imperfs 3x 2d Blue Covers & 2x Fronts; 1x Cover to England with 2x 2d Blue & 6d Red-Brown; 6d Black-Brown SG 41 Cover to Melbourne, 6d Brown SG 42 front to England; Perforated 1d Red Pair Cover , 1d Orange SG 112 Pair Cover, 2d Blue single on Mourning Cover & Pair on Long Cover, 2d x2 & 6d Red-Brown Cover to Australia, 2x 2d Orange Covers. Also 1d Brown, 6d Blue & 2d Blue Unused on 'Southern Monthly Magazine envelope. Condition varies. Interesting lot (16)	1000
153	U	Full Face Queens Range on Stockcards - Imperf 1d Red/Orange (4), 2d (10), 3d, 6d (9) & 1/-; Perforated 1d Red/Orange (11), 1d Brown (9), 2d Blue (13), 2d Orange (14), 3d Lilac (12), 4d Yellow (3), 6d Brown (36), 6d Blue (8) & 1/- Green (3) - Mixed lot condition varies (134)	1000
154	*/**/U	GOVERNMENT LIFE INSURANCE 1891-1982 Duplicated Range on looseleaf sheets Mint & Used. Some Modern Covers & Mail Tags. Also History of Government Life Postage Stamps. Mixed condition. (100's)	150
155	*/**	HEALTHS 1929-1972 (No 1931 Red & Blue Boys) Range in Blocks of 4 in Black Stockbook - 1929,1930,1932,1933,1934 (2) etc. The blocks lightly hinged at top. Cat \$1500+ Condition mainly fine (85 Blocks)	300
156	U	HEALTHS 2x Shoeboxes Accumulation in envelopes 1929/2010 incl 1929 x8, 1930 x 2, 1933 x4, 1934 6x, then with most year Good to Fine Used (Some hundreds) STC \$1500 up to 1941	125

157	*/**/U	HEALTHS Collection On Album Pages incl '29 & '30 Nurses Mint & Used, 1931 Red & Blue Boys Mint, 1932 Hygeia Mint, 1933 Pathway Mint & Used, 1934 Crusader Mint & Used etc (150)	250
158	*/**/U	KING GEORGE V Recess & Surface Collection on Album Pages Mint & Used all anotated with CP numbers incl 2 Perf Pairs incl 2 1/2d Blue CP K3a Block of 4 Used, 4d Violet CP K5e(2) Block of 4 with 2x unhinged, 8d Brown Block of 4 with 2x unhinged. Range of Pictorial Papers incl 6d Red Vertical Pair Used with Wmk/No Wmk & Pair Wmk Used, Also 1/2d Parisian Booklet Pane Mint, Admirals Jones 2/- unhinged, 3/- Mint & Used, Cowan Pair Mint & Used. Clean lot STC CP Catalogues \$9200 (100's)	1250
159	U	LIFE INSURANCE Accumulation 1891-1981 incl 1891 3d Brown, 1905 No VR to 6d, 1947 incl Scarce 2 1/2d Cape Campbell x60 plus range to 1981. All Good to Fine Used. STC \$4000 (hundreds)	100
160	*/**	Lighthouse 1855-1984 2x Albums with some pages hingeless incl 1920 Victory Set Mint, 1931-34 Airmails Mint. Range of Definitive & Commemoratives. Also some Health Min Sheets. Good pickings (100's)	300
161	*	LIGHTHOUSE 3 Volume 1990-2009 Set of hingeless Albums. No stamps. High Cost value (3)	250
162	*	LIGHTHOUSE HINGELESS ALBUMS 1855-2007 (no stamps) 2nd Hand and in good condition (5 Albums)	750
163	C	MILITARY Postal History all NZ Related - 12x WW1 & 18x WW2 Covers plus Daroux Postcard from Trentham Camp 1915 (31)	100
164	C	MILITARY WW1 & WW2 Covers & Cards mostly New Zealand incl Large Boer War Cover to NZ Folded (32 Covers/Postcards)	250
165	C	MILITARY WW2 Cover Range to NZ - 5x Australian Covers, 3x Egyptian Covers, 1x St. John/Red Cross Printed Cover Posted with MPO/KW10, YMCA OAS Printed Cover with Egypt/46 Prepaid cancel, 2x Green Active Service Unused Covers, 1x Germany POW Wrapper & 1x Italian POW Postcard. Condition varies (15)	150
166	C	MILITARY WW2 Large Collection housed in 2 FDC Albums plus 7 Folders of Correspondence with Airlitters, Letters & Airgraphs. The Albums include RAF Cover from Iraq, Christmas Cards, Soldier's Paybooks, Airgraphs, Censored mail from Egypt & Italy to NZ. Great range. Mixed condition. Historical lot from the correspondence. Good lot to expand (100's)	1250
167	C	NZ Military 50x WW1 & WW2 Covers all NZ Related plus 1x Boer War Postcard from Orange River to NZ. Interesting lot (51)	100
168	**	NZ Stamp Exhibition Min Sheets 1986/2008 - 1986 Tarapex x2, 1986 Sydplex x10, 1989 Expo x6, 1995 Stampex x10, 1996 Capex x6, 1996 Taipei Wildlife x6, Moa x7, 1998 Italia x8, 2004 Baypex x10, 2005 National Show x10, 2008 Tarapex x10. STC \$1650 (85)	75
169	*/U	PENNY DOMINION Large Range mostly Used loose and on album pages noted flaws & re-entries incl N, Globe, Feather & Q flaws on different papers. Some Officials. Also Alan Wilson's Plating of Plate 12,13,34 & Electrotpe Booklet Plates Book & Fisher's RPS Handbook. Hours of Fun & Sorting (100's)	500
170	C	POSTAL HISTORY 1900-1940 A small lot of Covers incl 1898/00 Pictorial Covers x9 incl Uprated QV 3d Registered env with additonal 2d, 2x 2 1/2d Wakatipu Covers, Range of Postcards x8 incl Christchurch Exhibition Postcard with 1d Exhibition stamp, odd Postal Stationery Postcards Mint, KGV 3x Advertising Covers & Uprated 3d KGV Registered Cover with additional 1/2d Green to USA, Health & Commemorative Covers to 1940 Centennial. Good Pickings (35)	300
171	C	POSTAL HISTORY 1936/1968 Small Lot of Healths, Airs, Arms, KGV I & QE Covers incl '44 Hitler Patriotic Cover, '48 KGV I Cover to 3/- plus Arms 2/6, 5/- & 7/-. Interesting lot (17)	125
172	C	POSTAL HISTORY 2x Filing Boxes - both exhibits - One on 'Cancellation & Datestamp Errors' on 43 Album Pages & Exhibit on 'Post 2000' on 51 Album Pages with a display of cancels post 2000. interesting lots (178)	150
173	C	POSTAL HISTORY Box with mainly Commercial Mail QV to QE Period with some mails overseas. Noted some Postmarks (A few 100)	150
174	C	POSTAL HISTORY Covers & Postcards Earlies to Modern with range of postmarks. Condition varies (76)	125
175	C	POSTAL HISTORY Large Summit Shirt Box containing Covers, pieces and postmarks on stamp from 1900's onwards - some ex Auction lots. Some commercial mail (100's)	200

176	C	POSTAL HISTORY Shoebox QV to QE Small Covers mostly Commercial Mail with some Advertising Covers (Several 100)	125
177	C	POSTAL HISTORY Shoebox Registered Covers, some Commercial & Postal Stationery KGV to Modern (300+)	400
178	C	POSTAL STATIONERY Mint & Used Range Postcards x79 (Retail \$829), Lettercards x78 (Retail \$1250), Newspaper Wrappers x27 (Retail \$358) and Registered Covers x38 (Retail \$595) - Retail over \$3000. Good Condition. Good for reseller (222)	750
179	C	POSTAL STATIONERY QV to QE Range incl QV Reply Card complete, QE Education Department x10 All Mint (36)	50
180	U	POSTMARKS 2x Springback Albums with range of cancels mainly on stamp or piece incl Cullensville, Driving Creek, Exhibition Christchurch on 1898 2 1/2d, Hermitage, Irwell, Muritai, Malaghan's, Orari Bridge, Styx, Tui, Waiuta etc Part to Good Strikes. Suit Reseller/Internet (100's)	500
181	U	POSTMARKS 2x Stockbooks Range on stamp & piece. Part to good strikes. Many coin cancels (100's)	300
182	U	POSTMARKS A Collection on Stockcards & in clear bags incl Sutherlands 1906 on Postcard, 1901 Registered Cover to Gibraltar, Okonga, Kokako, Te Tua on Postcard, Pukepito on 1907 Postcard, Hamilton South on Postcard, Blackstone Hill, Horseshoe Bend, Aponga 1889 Manuscript cancel, Mara J piece Rated 10, Ihuraua Valley, etc.. Many other Closed PO's with Part to Good Strikes. Suit reseller/ internet (100's)	1000
183	U	POSTMARKS Accumulation Ex Auction Lots 1900-70 all in individual envelopes some rating up to 7's. Originally Estimated at \$1600 well worth inspection. Good for reseller/internet	100
184	C	POSTMARKS Album with range of Covers/Postcards with a good range of Postmarks. Noted Flaxbourne, Aotea, Fernside, Waiuta, Shirley 1940 Relief, Otematata Camp Opening Cover, 1910 Domain Fete, Bald Hill Flat, West Eyreton, Burke's, Ravensthorpe MC etc. Suit reseller/internet (132)	250
185	U	POSTMARKS Collection of Relief cancels 1950's-1986 plus 15 Covers/Cards. Nice lot (101)	200
186	U	POSTMARKS North Shore (Auckland) Collection cancels Earlies to Modern range with a good range of Post Offices incl a few relief cancels (Several 100)	150
187	C	POTAL HISTORY Shoebox with Mostly QE Commercial Mail with some covers to USA. Many cancels and markings (Several 100)	125
188	C	RAILWAY Post Office Collection Mounted on Album Pages together with related Photos & Postcards. Comprehensive lot noted Papamoa, Mareretu Tunnel, Esk Railway Works, Pahiatua Railway, Also Frankton Junction Postcard, Railway Station Dannevirke Postcard, 1/2d Newspaper stamp cancelled Studholme Junc, 1/2d Mt Cook on Part Newspaper 1909, Broken River, Midland Railway Postcard, Little River Railway Station Postcard, Otira Tunnel Graphic Card, Railway Station Gore Postcard, Trucking Logs Main Trunk Railway Postcard. Great lot to expand. Historical (100's)	1500
189	C	REGISTERED 'AR' Card Collection of different types in 2x Warwick Albums. Plus 4x 1914/21 AR Acknowledgement of Delivery Forms - 2 with stamps, folded and slight staining. Great lot to expand & exhibit (100+)	750
190	C	Registered Covers Collection on Album Pages plus Printed Registered Covers from 1910 to QE period. Fine lot to expand incl 1911 Registered Cover with 2d KEVII & 1d Dominion, 1909 3d KEVII Printed Cover from Half-Moon-Bay etc (87)	500
191	C	Registration Covers 39x Cachet QE Period Covers with handbook. Also range of pieces. interesting lot (Several 100)	200
192	U	REGISTRATION LABELS Collection in 1x 32 Page & 1x 8 Page Stockbooks plus an extra surplus plastic bag. Good range of labels set out in the stockbooks (100's)	150
193	U	REGISTRATION LABELS Collection in 3 Ring Binders mounted and sorted into different types/ Has some variation labels on hagner pages. Great lot to expand (1,000's)	600
194	U	REGISTRATION labels Large Shoebox fully sorted in envelopes and in different types. Huge range (1,000's)	250
195	U	REGISTRATION Receipts a large range in a Kodak Box, some in joined strips from many Post Offices. Also bundle of Postal Note butts (100's)	100

196	C	REVENUES 1873-1925 20x Complete Legal Documents with a good range of Revenues from QV Long Types to 3/- Admiral (20)	200
197	*U	Revenues Hagner Sheet with a Range of Social Security Stamps (95) with a range of years and values; odd Cinderellas mainly modern (22) but includes 1940 NZ Centennial label plus odd Perfins (5) - (122 stamps)	100
198	*/**/U	Scenic Stamps 1972-1994 Sets & Plate Blocks (Face Value \$650), Also 1980's Definitive Plate Blocks, some Framas, Social Security stamps, Range FDC's & Commemoratives. Miscellaneous NZ & Pacifics in a Box. (100's)	400
199	C	SLOGAN Postmarks on Cover 1945-1960 era all different incl varieties and towns with Blood Donors, Canterbury Centennial, Check your Chest, Fight Cancer, Industrial Jubilee, Long Live the Queen, NZ Lamb, protect Forests and Wanganui Homes Week slogans. (68)	50
200	*/**/U	Stockbook 1855-1970 Mint & Used Range incl Imperf 6d Red-Brown Used, Perforated FFQ's x 8 Used, 2nd Sidefaces Adverts 2 1/2d Sunlight Soap & 5d Kaitangata Coal Adverts Used, 1898 Pictorials London Prints used, KGV Recess & Officials Set Unhinged, also KGV Surface & Officials Unhinged. Also KGV I & Officials plus 1940 Centennial Set & Officials Unhinged. Good Pickings High Catalogue (100's)	950
201	U	TELECOM Cards Collection in Album incl \$50 1994 Year of Dog Brodie Card etc (100)	100
202	*U	Two Volume Collection from Full Face Queens on Album Pages with 22x FFQ's up to 1970's Mint & Used with some duplications (100's)	750

NORFOLK ISLAND

203	*/**/U	1947-1990's Large Stockbook Mint & Used Range incl 2d Ball Bay White Paper. High Catalogue (100's)	500
-----	--------	--	-----

NORTH BORNEO

204	*U	1888-1961 Collection on Hagner Pages mainly Mint + CTO range incl 1897 Pictorials, 1899 Surcharges to \$2 mainly Mint, 1909 Definitives to 24c Mint, 1909 Postage Dues to 12c Mint, 1918 Red Cross + 4 Cents Set to 24c, Odd Malaya-Borneo to 25c Mint, 1931 50th Anniversary Set to \$1 Mint, odd Japanese Occupation values. Also Sabah & Labuan range. Also Registered Cover 1897 12c & 18c Definitives tied to London, 2x 1936 Registered Covers to Ireland. Condition varies STC £2000+ plus the 3 Covers (100's)	750
-----	----	--	-----

PAPUA & NEW GUINEA

205	*/**	1966-2008 2 Warwick 55 Albums Range Sets Unhinged from 1976 incl 1994 Surcharges Set High Catalogue (100's)	500
206	**/C	1968-1995 FDC's Range in Box plus Album & Stockbook Mint & Used from 1990's. Plus Franklin's Guide to the PNG Stamps Book (100's)	200
207	**	1991-1998 Album range of Unhinged Sets Definitives & Commemoratives incl 1994 Surcharges. Clean lot (180+11M/S)	250

PITCAIRN ISLAND

208	C	1940-1988 First Day Cover Album incl 1965 ITU, 1965 ICY, 1966 Churchill, 1966 WHO, 1966 Unesco, 1970 Fish, 1975 \$1 QE Definitive etc. Also 1983,1985,1987 Airdrop Covers. Clean Lot (77)	150
-----	---	---	-----

PORTUGAL

209	*U	Collection Pre 1940 Mint & Used & Spain Good Earlies (100's)	450
210	*U	Large Stockbook of Portugal & Spain Early to Modern Range. Mainly Used. Condition varies. (1000+)	150

RUSSIA

211	*/**/U	Collection 1858-1984 in 2x Large KA-BE Albums Used/CTO or Mint. First Century alone 1858-1958 SG Cat £3500 simplified. A little specialised sometimes with both Perf & Imperf, some toning in places. A huge collection to work on (3000 stamps plus dozens of M/S)	1000
212	*U	Collection in 3 Albums & 2 Stockbooks Earlies to Modern. Mostly used incl a Printed Album. Good lot to expand (100's)	400

SINGAPORE

213	*/**/U	1960's-90's Dealer's Stockbook Mainly Mint/Mint Unhinged Sets Good Pickings Priced to sell at \$1425 (100's)	300
-----	--------	--	-----

SOUTHERN NIGERIA

214	U	1924-1964 Collection on Album Page incl 1931 Set plus odd SWA Good Pickings (148)	300
-----	---	---	-----

SWITZERLAND

215	*/U	1850-1939 Collection on Album Pages incl 1850 5r,10r & 2x 15r Used, 1854 Imperfs 5r,10r,15r,20r & 40g used, 1862 Definitives to 1f Mint or Used incl 3c Black, 1f Gold, 1882 Range Definitives Used, 1914 Mountains Used, 1923 Airs some values to 1f, Some Pro Juventute issues. Mostly used. Odd blemishes. High Catalogue Value (Several 100)	500
216	*/U	1854-1999 Schaubek Printed Album Mostly Used range with Useful Commemoratives incl Pro Juventute, Pro Patria. Clean lot. Good lot to expand (100's)	400
217	*/U	1854-2006 Davo Printed Album Mostly used with useful Sets incl Pro Juventute. Clean lot. (1800+14M/S)	375
218	*/U	1862-2006 Davo Printed Album with mainly Used incl Pro Juventute Issues from 1919 and 1923 Airs 35c & 40c . Noted some back of the book issues. High Cat in good condition (1700 & 10 M/S)	400

THAILAND

219	*/U	1920 Scout's Fund - the first, second and third sets all to the 15s (+5s) Blue Mint or Used on an album Page plus 2 forgeries. Mostly fine Cat £970 (17)	500
220	C	POSTAL HISTORY 1918/1940's Collection of Commercial Covers incl 1946 AV2 Cover to USA, 1945 AV2 Cover to Switzerland, 1940 Registered Cover to Czechoslovakia, 1928 Airmail Cover to France, 1918 1b,2b,3b Red Cross values on Cover, the stamps Cat £180 alone. Interesting lot (20)	750

TONGA

221	*/U	1886-1970's Collection in folder with a good Range on Album Pages, Hagner Pages and Stockcards plus a small Stockbook. Mixed condition but value in the earlies (100's)	500
222	*/U	1886/1975 Collection Mint & Used from earlies to the modern free form issues. The Catalogue value for the Pre 1935 stamps is over £1300. Condition varies on earlies but a good lot to expand on. (several 100's)	700

TURKEY

223	*/U	Collection on Album Pages Remnants lot a little picked over Mint & Used range and with Useful Pickings. Also 1936,1968,1969,1974,1975 Presentation Albums. Good Pickings (Several 100)	200
-----	-----	--	-----

UNITED STATES OF AMERICA

224	U	1918-48 Collection on pages, some toning. SG Cat £525 (275)	150
225	U	Minkis 2 Printed Albums with a good range from earlies to modern. (100's)	375
226	*/U	REVENUE Collection mounted in Album incl Proprietary stamps, Documentary stamps, Stock Transfer stamps, Telegraphs, Internal Revenues, Cigarette Tax, Beer & Wine Tax, Prepaid Sales Tax, Intangible Tax, Postal Note, Potato Tax, etc Great Lot to expand on (100's)	750

WORLD

227	*/U	ADRIATIC AREA - Collection of Greece, Bosnia, Montenegro, Serbia & Yugoslavia Pre 1940 Mint & Used on Album Pages (100's)	300
228	*/U	ASIA Large Stockbook incl China, Taiwan & Malaysian States Mint & Used (100's)	250
229	*	British Commonwealth Collection on Album Pages incl Ascension, Australia, Cayman Islands Earlies to Modern. Good Pickings and Good Condition (100's)	500
230	U	British Commonwealth Collection on Album Pages incl Ceylon 1935 onwards & Australia from Roos to Modern. Good Pickings (100's)	475

231	*	British Commonwealth Collection on Album Pages incl Cook Islands, Falkland Islands, Hong Kong, Jamaica & Leeward Islands. QE Period. Large Range. High Catalogue (100's)	750
232	*	CINDERELLAS Small Leather Old Folder containing religious Scene labels all mounted on pages (84)	100
233	*/U	EASTERN EUROPE Collection Pre 1940 of Czechoslovakia, Hungary & Poland Mint & Used. Good Range (100's)	250
234	*/**/U	Large 32 Page Stockbook with World-Wide Range Mint & Used Pre 1950. Good Pickings (100's)	200
235	C	MILITARY Postal History 61 WW1 & WW2 World Covers plus 3x Boer War Covers to England (64)	100
236	U	Old Exercise Book with range NZ QV Imperf Revenues, 1898 Pictorials Set to 5/- (5/- Fiscal), odd British Commonwealth Earlies, Queensland Revenues, Tasmania, Western Australia, Canada, NZ 1880 QV Revenues, odd Perf NZ FFG's etc. Also 2x British South Africa Company Hut Receipts both with 3/- Arms stamps tied. Good Pickings. Interesting lot (200+)	250
237	*/U	Old Victory Album with a good range incl Africa, Pacific Islands, Asia & European (100's)	500
238	*/**/U	PACIFIC ISLANDS - Tuvalu Folder, Vanuatu Stockbook & Tokelau Islands in a folder. Mostly Mint. Good Range (100's)	250
239	*/**/U	PACIFIC ISLANDS Large Folder with Stockcards Earlies to Modern from Cook Islands, Niue, Aitutaki & Penrhyn Islands. Good Range Mint & used. Some Covers. Noted Arms Ovpts plus early NZ Overprints. Good Pickings. High Catalogue (100's)	350
240	*/U	PACIFIC ISLANDS on Stockcards - Samoa, New Hebrides Mint & Used incl Earlies, Fiji Postage Dues incl Specimens, Odd Cook Islands. Condition varies. High Catalogue (Several 100)	500
241	U	PERFINS Collection in Folder on looseleaf Pages - Great Britain QV to QE Range plus odd Covers, European, Australia, Canada, USA & odd New Zealand. Plus odd USA Precancels (Several 100)	150
242	C	ROCKET MAIL Large Collection mounted on Album Pages of Gerhard Zucker Rocket Mail containing Covers, labels, photos and related information. Great lot to exhibit on 171 pages (100's)	6000
243	**	ROYALTY 2002-2007 Large Collection on Hagner Pages with many Sets and Miniature Sheets. High Catalogue (100's)	100
244	U	SCANDINAVIA Pre 1940 Collection on Album Pages - Denmark, Iceland, Norway & Sweden. Nice lot with some better values (100's)	900
245	*/**/U	SHIPS & BOATS Collection of Pacific Islands illustrating Ships & Water Craft Early to Modern, Mint/Unhinged/Fine Used/FDC. Earlies incl German New Guinea 1901 yachts range Mint to 80pf, Samoa 1914 GRI 3x low values Fine used (Cat £50), Range Solomon Islands early to modern, Pitcairn, PNG, Tonga etc. (a few 100)	400
246	*	SILVER JUBILEE 1935 Stockbook with a good range of sets for each country. Not complete, a few part sets. No Egypt British Forces. Some Used or part sets. Some extra sets. Mostly good condition. Cat £1200+ (490)	500
247	*/**/U	Stockbook 16 Page Black with Worldwide Range Pre 1950 Mint & Used incl Denmark, Finland, Greece, Iran, Italy, Luxembourg, Portugal & Spain. Good Range & Pickings (100's)	250
248	*/**/U	Stockbook 8 Page with a Range of Perfins, World range earlies to Modern incl Australia 1971 Christmas Block of 25 unh. some Pickings (100's)	100
249	*/U	Stockbook Early Range Worldwide Mint & Used. Good pickings (100's)	350
250	**/C	Thematic - Volleyball Collection Covers & Cards (with special cancels), Miniature Stamps & Stamps. Ex Exhibit (225+)	50
251	C	Thematics -Chess Collection of Covers includes special chess cancels from many countries (49)	50
252	*/U	THEMATICS CHRISTMAS Collection Mint & Used World Range on Album Pages (100's)	150
253	*/**/U	THEMATICS Collection on KINGFISHERS - Range of Stamps, Covers & Miniature Sheets. Also includes some reference books & lists. Good lot to expand (100's)	150
254	**	THEMATICS on Flora & Fauna 8 Page Stockbook containing a range of Progressive Prints, Proofs & Errors. Interesting Lot with many sets. Priced to sell at £7360 (193 items)	500

255	*U	Three Old World Albums with a good Range Mint & Used. Some Pickings (100's)	300
256	*U	Triumph (GF Rapkin) 3rd Edition Large Printed Album with a good range of Mint & Used stamps (5300+)	250
257	*U	Triumph Stamp Album by GF Rapkins 1930's with a good range World Mint & Used includes Australia Roos 5/- (2), 10/- & £1 Grey Used, Also other Roos, KGV & Commems; Canada, China, France, Germany, GB QV to 10/-, Netherlands, Hong Kong, NZ from FFQ's incl Officials, Healths incl '31 Red & Blue Boys, Some Fiscals, USA. Mostly Used. Good Pickings (100's)	1250
258	*U	Two Old World Albums plus a little box with a good range Mint & Used. useful Pickings (100's)	250
259	*U	WORLD Old dilapidated album with a good range Mint & Used. Useful earlies (100's)	200

POSTCARDS & POSTCARD COLLECTIONS

260	C	Actresses & Portraits incl Baden Powell etc (38)	50
261	C	Album with 5x WW1 Silk Cards & 14x 1906 NZ Christchurch Exhibition Cards. Nice lot (19)	100
262	C	EGYPT & GREAT BRITAIN Large Postcard Box Mainly Older Cards but a few Modern ones noted. Clean lot (750+)	375
263	C	Folder with 12x NZ Postcards & 22x World mostly Used. Noted Postage Due & Packet Boat markings. Good range (34)	100
264	C	GERMAN Old Photo Album with a range of Photos and Portraits. Some in Military Uniforms (58)	100
265	C	GREAT BRITAIN & Channel Islands Mainly Older Cards (135)	200
266	C	GREAT BRITAIN Early Range of Scenes including some Real Photographs. Some Tuck's Cards (275)	400
267	C	Greetings, Best Wishes & Christmas Cards. All Older (150)	200
268	C	NZ Airforce Photos Collection in a folder including photos of Aircraft, Parades, Royal Visits, Air Displays. Historical lot (40)	100
269	C	NZ EXHIBITION Postcards - 17x Christchurch Exhibition, 2x Dunedin Exhibition, 2x Auckland Exhibition plus 3x Wellington Waterchute Cards. Also Alexander de Kort's 'The Great Exhibition Christchurch' Book (24 Postcards & 1x Book)	250
270	C	NZ Shipping Postcards - SS Maori (Mint Card), RMS Athenic London - New Zealand Service with GB 1d tied by boxed 'Packet Boat' blue cachet, HMS Eurylas & Challenger at Lyttelton Posted at Christchurch 1907. Light ageing to 2 Cards (3)	50
271	C	OLD ALBUM with Scotland Postcards containing over 200 Cards Pre 1920, mixed condition, some used to NZ. Some street scenes, trams and steamers etc (200+)	150
272	C	USA California Collection of mainly early Postcards. Some nice cards (270)	600
273	C	USA Collection of Florida, Idaho, Iowa, Kansas, Kentucky, Maine, Maryland, Massachusetts, Michigan. Mostly Older Postcards (140+)	300
274	C	USA Collection of Postcards from Minnesota, Missouri, Nevada, New Jersey, New Mexico, Niagara Falls, Ohio, & Oregon. Mainly Older Cards (160)	350
275	C	USA Collection Postcards from Alaska, Arizona, Chicago & Colorado. Mainly older cards (140+)	300
276	C	WORLD Carton All World Range with 250x Early & 150x Modern Postcards with early GB, Europe, Egypt - some used to Tasmania. Mixed condition (400+)	150
277	C	WORLD Large Box Worldwide Range Postcards Range Earlies to Modern. Suit reseller 12.5kgs (3000+)	450
278	C	WORLD Large Carton Worldwide Range Postcards Earlies to Modern. Suit reseller 12.8kgs (3000+)	450
279	C	WORLD Large Carton Worldwide Range Postcards with Range of Earlies to Modern. Suit reseller 12.2kgs (3000+)	450
280	C	WORLD Range mainly Older Cards incl France & USA (100+)	150
281	C	WORLD Shoebox with Worldwide Range Mint & Used (640)	250

WORLD STAMPS & COVERS

AUSTRALIA

282	U	1913/14 Roo £1 Brown & Blue SG 15 Very Good Used. Very Scarce. Cat £2500 (1) PHOTO-PLATE 1	1700
283	C	1915 (11DE) Censored Cover addressed to 'Bureau International, Swiss bearing 3x KGV 1d Red's - one with an 'RA' flaw Posted at Brisbane. Backstamped Lausanne. Ex Osdene Collection (1)	150
284	C	1915/16 3x Stampless Postcards - Printed Field Service Postcard cancelled 'Australian Imp Forces/Base Post Office' 2 AU 15 to Victoria, 1916 (3JA) Egyptian Postcard cancelled 'Australian Base/Details PO' to NSW with oval 'B Details/On Active Service/Zeitoun' & Censor AIF Passed by Censor cachet. Also uncanceled Printed Adelaide YMCA Army Dept Printed Postcard to WA. Condition varies (3)	100
285	C	1921 (DE11) Australian Picture Postcard with NZ 1d Dominion tied by 'Loose Ship's Letter/Posted at MacQuarrie Island/SY Aurora' plus Hobart cds to NZ. Rare Early Antarctic Card (1) PHOTO-FRONT COVER	1500
286	**	1926/30 KGV 1 1/2d Scarlet P13 1/2 x 14 SG 96 in a Top Marginal Gutter Block of 4 with a partial Imprint in error. Has a minor gum crease in the selvage. Nice item (4) PHOTO-PLATE 11	200
287	*/**	1931/36 KGV 1/4 Turquoise SG 131 in a John Ash Imprint Block of 4 lightly hinged at top and on the bottom selvages. Minor perf tone in the selvage. Scarce (4) PHOTO-PLATE 9	500
288	U	1931/36 Roos C of A Wmk 10/-, £1 Grey & £2 SG 136/38 All Very Good to Fine Used. The £2 value has nibbled perfs at top. Retail A\$1225 (3) PHOTO-PLATE 1	650
289	U	1932 5/- Sydney Harbour Bridge SG 143 Fine Used with blunt perf on base. Retail A\$295 (1) PHOTO-PLATE 1	150
290	*	1932 5/- Sydney Harbour Bridge SG 143 Good Mint Retail A\$475 (1) PHOTO-PLATE 1	375
291	**	1932 5/- Sydney Harbour Bridge SG 143 Unhinged (1) PHOTO-PLATE 1	750
292	*	1937/49 Robes Thin Paper High Values SG 176a/178a - the 5/- Mint No Gum, the others good mint Retail A\$140 (3)	100
293	C	1940's KGV I Myer Emporium Ltd 5/10 Parcel label cancelled at Melbourne to England. Very Scarce (1) PHOTO-PLATE 15	450
294	P	BCOF 1946 'The Overprint Only' Proof stamp size all on plain wove paper in black, gold and red on thin serriffed overprints, plus a thick serriffed overprint in black. Nice lot (4) PHOTO-PLATE 1	400
295	*/**	BCOF 1946 Set SG J1/7 Complete Good Mint except for the 2/- which is unhinged. Retail A\$200 (7)	150
296	*	Postage Dues 1902/04 10/- Dull Green SG D43 Good Mint. Very Scarce Cat £2000 (1) PHOTO-PLATE 1	2000

AUSTRIA

297	*	1931 Rotary Set SG 666/71 Good Mint. Scarce Cat £300 (6) PHOTO-PLATE 1	200
-----	---	--	-----

BADEN

298	C	1853 Wrapper with 9kr Pink/Black Imperf tied. Has boxed to MANNHEIM 120kt addressed to Coln with a receiving backstamp. Cat 120 Euros (1)	75
-----	---	---	----

BANGLADESH

299	C	1983 50p Bird Printed envelope 2x - One Albino Fine. Bird Thematic Item (2)	50
-----	---	---	----

BAVARIA

300	C	1899 5pf Printed Private Order Postcard showing coloured Duck Shooting illustration Posted at 'Tutzino'. Fine Bird Thematic Related Item (1)	50
-----	---	--	----

BELGIUM

301	C	1927 (24MY) Newspaper Wrapper Advertising Racing Pigeons with 35c on 40c Definitive tied. Bird Thematic Item. Fine (1)	50
-----	---	--	----

BOLIVIA

302	C	1861 (OC3) Prestamp Entire addressed locally to 'Eochabambao' with the 'Condor Feather Cancellation' Fine Bird Thematic Cover (1)	200
-----	---	---	-----

BRAZIL

303	C	1844 (NO25) Prestamp Entire endorsed "Per Crane" Posted at RioJaneiro to London with London red arrival 9/01/1845 on the back. Has 'Nathan Bros/Rio De Janeiro' black cachet at top right. The entire rated 2/4 to be collected on delivery. Bird Thematic Related Item (1)	150
304	C	1930 (24MY) Cover with 500r Definitive & 2x 5,000r Zeppelins Posted at Rio De Janeiro by Condor Airlines to Bodensee, Germany. Backstamped Freidrichshafen 6 JU 1930. Bird Thematic Related Item. Fine (1)	100
305	C	1938 (16JA) 1937 Internal Formular Lettercard (Has Eagle Illustration in violet) with 400r Eagle & Shield plus 500r Brown Definitive tied to Amsterdam, Holland. Fine Bird Thematic Related Item (1)	50

BRITISH VIRGIN ISLANDS

306	*	1887/89 Definitives Overprinted 'Specimen' SG 34s/40s - the 4d & 6d values Mint No Gum. The 1/- Mint with a slight thin. Cat £300 (4) PHOTO-PLATE 1	150
307	*	1922/28 KGV Specimen Set SG 86s/101s Good Mint all Overprinted 'Specimen' except for the 1d Scarlet & 1 1/2d Venetian Brown which are perfed 'Specimen' Cat £350 (16) PHOTO-PLATE 1	250

BULGARIA

308	C	1932 (9AP) Registered Airmail Set tied by PYCE/ROUSS cds to Paris Fine (1) PHOTO-PLATE 15	150
-----	---	---	-----

BURMA

309	C	(Japanese Occupation) 1a KGVI Printed envelope with Burma Peacock Overprint Posted at Madbin 2/05/42 to Myanaung 9/05/42 arrival date. Bird Thematic Item (1)	50
-----	---	---	----

CANADA

310	*	1897 Jubilee \$1 Lake SG 136 Good Mint Centred to top Cat £550 (1) PHOTO-PLATE 1	500
311	U	1897 Jubilee \$1 Lake SG 136 Used with a heavy cancel. Cat £550 (1) PHOTO-PLATE 1	300
312	U	1897 Jubilee \$2 Deep Violet SG 137 with heavier cancel. Cat £425 (1) PHOTO-PLATE 1	250
313	P	1897/8 QV 1/2c to 10c Imperf Plate Proofs in singles on thick card in issued colours. Minor ageing. Scarce lot (8) PHOTO-PLATE 1	500

CEYLON

314	*	1899/00 QV Definitives Set Overprinted 'Specimen' SG 256s/64s. Some values with part gum. Cat £225 (9) PHOTO-PLATE 1	200
-----	---	--	-----

CHINA

315	U	1945 Military Field Post SG M745 No Value (Entrenched Soldiers) Block of 6 Fine Used. Cat £150 (6) PHOTO-PLATE 9	150
316	C	1949 Local Cover bearing East China \$10 Train & Postal Runner SG EC337 & 5x '49 \$18 Blue Victory in Huaihai Campaign tied by 'ONIHOM' to Shanghai (with receiving cancel). Some staining (1)	50
317	C	1950 Peace Campaign Set tied on First Day Cover (1) PHOTO-PLATE 15	100
318	*	1963 Butterflies Part Set - 4f (No's 1,2,3 & 5) plus 20f (both), 22f, 30f & 50f values SG 2069/71, 2073, 2084/88. Mint hinged Cat £197 (9)	125
319	*	1971 8f Albanian Worker's Party Speech SG 2470, 1973 Children's Day (N19) SG 2507a, 1973 Chinese Exports Fair (N21) SG 2520, 1975 Fourth National People's Congress (J5) SG 2597/99. Mint Hinged. Cat £128 (10)	75
320	*	1971 Afro-Asian Friendship Table Tennis Tournament Set (N5) SG 2466/69 Mint No Gum hinged with a faint perf tone on 1 stamp. Cat £170 (4)	100

321	**	1971 Paris Commune Centenary (N3) SG 2442/45 Mint No Gum as issued. Minor perf staining. Cat £540 (4) PHOTO-PLATE 1	300
322	*	1972 Red Flag Canal (N12) SG 2494/97 Mint Hinged with slight perf staining. Cat £200 (4)	100
323	*	1973 Modern Revolutionary Ballet (N13) SG 2516/19 Mint Hinged. Cat £180 (4)	100
324	**	1974 25th Anniv Chinese People's Republic (J2) SG 2584, 1975 National Conference on learning from Tachai Set (J7) SG 2624/26, 1976 95th Birth Anniversary Lu Hsun Set (J11) SG 2672/74, 1977 Taching-type Industrial Conference (J15) SG 2715/18, 1980 Winter Olympic Games Set (J54) SG 2964/67 All Unhinged Cat £150 (15)	125
325	**	1975 Completion Fourth Five-Year Plan Set (J8) SG 2637/52 Unhinged Cat £240 (16)	250
<u>COCOS (KEELING) ISLAND</u>			
326	C	1945 (29OC) Stampless 'On Active Service' Airmail Cover to England cancelled with light 'RAFPOST 301' cds. Has 3 page letter enclosed. Minor soiling & corner creasing (1)	250
<u>COOK ISLANDS</u>			
327	P	1893/00 Makea Imperf Plate Proofs in Black - 1d, 1 1/2d, 2 1/2d, 5d & 10d on thin unwatermarked paper. Minor staining on 2 values (5) PHOTO-PLATE 1	500
328	*	1919 KGV Set of 2 Perf Pairs SG 48b/55b Nice Mint Cat £208 (7 Pairs)	250
329	**	1932 2 1/2d Pictorial single with 'Inverted Centre' variety Unhinged but with a tone spot. Very Scarce (1) PHOTO-PLATE 1	500
330	P	Unadopted Cook Island Design with Palm Tree by HL Richardson depicting a 2 1/2d Stamp with a Palm Tree & Native ornaments with a Crown at the top. The 3 Items are - Large Pencil Drawing plus small black print on drawing paper. Also Larger Photographic Proof. Fine & Interesting trio of Items (3) PHOTO-PLATE 18	1000
<u>CUBA</u>			
331	C	1869 (18DE) Entire Posted at Havana endorsed 'Per Eagle' with 'NY Steamship DEC 23/10' handstamp to New York. The Postage 10c was collected off the addressee. This marking was used on contract mail arriving at the port of New York from 1866-1874. Interesting letter (1) PHOTO-PLATE 15	150
<u>FIJI</u>			
332	*	1906/12 KEVII Definitives Set Overprinted 'Specimen' SG 119s/124s Mint with odd blunt perf. Cat £375 (6) PHOTO-PLATE 1	300
333	C	1907 (18NO) Cover to NZ with KEVII 1d Red tied by 'RAKIRAKI' Straight-Line cancel plus Suva cds. Backstamped Suva, Auckland & Christchurch machine cancels (1) PHOTO-PLATE 15	500
334	C	1918 (2JA) Stampless 'On Active Service' Cover cancelled 'Field Post Office/35' cds Censored addressed to 'Francis Reay, Suva, Fiji Islands'. Backstamped 'GPO SUVA/FIJI' 19 MR 1918. Fine Inwards WW1 Cover (1)	250
335	C	1921 (20AP) Registered Iremonger Cover with KGV 5/- tied by 'PO NADI' cancel to England. Has Suva Registered handstamp. Backstamped Suva Registered & Registered Liverpool cancel. The Cover has light ageing (1) PHOTO-PLATE 15	400
336	C	1922 (13JN) Iremonger Registered Cover with 1/- KGV tied by 2 strikes of PO LEBASA cds. Backstamped Suva Registered & Registered London cancels (1)	300
337	C	1922 (13SP) Iremonger Registered Cover to England with KGV 3d tied by 'PO Vunidawa' cds. Backstamped Suva Registered & Registered Liverpool cancels. (1)	300
338	C	1922 (6JN) Registered Iremonger Cover with 1/- KGV tied by 'PO Nausori' cds to England. Backstamped Suva Registered & Registered London cancels (1)	300
339	C	1922 (9JN) Iremonger Registered Cover with KGV 3d & 4d values tied by 'PO/BA' cds to England. Backstamped Suva Registered & Registered London cancels (1)	300
340	C	1922 (SP 12) Iremonger Registered Cover with KGV 1/4d, 1/2d, 1d, 2d & 2 1/2d values tied by 'PO Navua' cancels. Backstamped Suva Registered & Registered Liverpool cancels (1)	300

341	C	1923 (2AU) Iremonger Registered Cover to England with KGV 1/- tied by 'PO Vunisea' cancel. Backstamped Suva Registered & Registered London cancels. Scarce (1)	300
342	C	1929 (4SP) Iremonger Registered Cover to England with KGV 1d & 4d Definitives tied by fine 'DAVUTU' Straight line cancel. Backstamped Suva Registered cds. Very Scarce (1) PHOTO-PLATE 15	500
343	C	1931 (12SE) Iremonger Registered Cover to England with KGV 5d tied by large 'PO Vunidawa' cancel. Backstamped Suva Registered cds. Very Scarce (1) PHOTO-PLATE 15	400
344	C	1931 (27SP) Registered Iremonger Cover with KGV 6d with 'NATASA' Straight line cancel to England. Registered at Savu Savu East. Backstamped Suva Registered. Fine item (1) PHOTO-PLATE 15	500
345	C	1931 (4DE) Iremonger Registered Cover to England with KGV 2/6 Definitive tied by 'MAKOGAI' cancel. Backstamped Suva Registered Fine & Scarce (1) PHOTO-PLATE 15	400
346	C	1938 (28SP) Iremonger Registered Cover to England with KGV 6d tied by 'DAWASAMU/FIJI/TAILEVU' cds. Has early type registration label also cancelled. Backstamped Suva Registered. Very Scarce (1) PHOTO-PLATE 15	500
347	**	1938/55 KGV1 Definitives Set (No 10/-) SG 249/66b - All Unhinged except for 2d Die 2 & 5d Blue Sugar Cane & 5/- values. Cat £235 (21)	250
348	C	1942 (2AP) Registered On Active Service Censored Cover to NZ bearing KGV1 2d + 3d Definitives tied by violet 'MARTINTAR/PA/FIJI' cancel (Temporary Postal Agency for building of the airport at Nadi). Censor No 30 cachet. Backstamped Suva Registered cds. Fine Item (1) PHOTO-PLATE 15	250

FINLAND

349	C	1809 (NO) Entire Crown Post bearing Two Feathers on the back indicating very urgent delivery. These were the forerunners of the Express Letter Service. Fine & Rare (1) PHOTO-PLATE 15	500
-----	---	--	-----

FRENCH ANTARCTIC TERRITORY

350	**	1963 International Year of the Quiet Sun 100f Radio Towers & Adelie Penguins SG 37 Unhinged Cat £90 (1)	75
351	**	1966/69 20f Albatross SG 31 Fine Unhinged Cat £325 (1)	250
352	C	1969 (22DE) Cover with 50f Port-aux-Francais SG 46 (with Emperor Penguin) tied by 'Archipel-Des-Crozet' cds to Australia. Bird Thematic Item. The stamp Cat £110 alone (1)	75

GERMANY

353	C	1874 (19NO) Registered Parcel Card bearing 9k Brown i 30 tied by CONSTANZ cds. Backstamped 'WEILERINBADEN' 22 NO 74 cds. Cat 1000 Euros on Cover (1) PHOTO-PLATE 15	250
354	C	1900 Munich Private Stadtpost Courier Stamp tied on Printed Postcard (Fox with Gamebird in its mouth) Bird Thematic Related Item (1)	75
355	C	1925 (31AU) 15pf Official Glider Printed Card from Wasserkuppe to Gersfeld. Has 'Eagle Printed' Illustration at left in Blue and also on the special cancel. Bird Thematic item (1) PHOTO-PLATE 15	50
356	C	1929/35 3x Registered Covers to NZ - 1929 Set tied and Posted at Berlin plus 2x 1935 Covers with various adhesives Posted at Thiessow (Rugen). Odd blemish. Nice frankings (3)	200
357	C	1932 (1SP) Printed Postcard used for the Graf Zeppelin 5th South American Flight Germany to Brazil with 1m Zeppelin & 40pf President values tied. The condor cachet applied on board. Bird Thematic item (1) PHOTO-PLATE 15	100

GIBRALTAR

358	*/**	1935 2d Silver Jubilee in a Corner Vertical pair with the top stamp SG 114a Extra Flagstaff variety Mint. Cat £75 (2)	75
-----	------	---	----

GILBERT & ELLICE ISLANDS

359	C	1908 (JU22) Wreck Cover 'Damaged in Wreck/Of SS Aeon' cachet in red addressed to New Zealand from the US. On the front with Los Angeles & Invercargill 13 OC 08 cancels. On the back with a 'New Zealand Officially Sealed' label plus Invercargill roller cancel. Fine & Interesting Wreck mail (1) PHOTO-PLATE 16	900
-----	---	---	-----

360	*	1911 KEVII Fiji Overprints Set Overprinted 'Specimen' SG 1s/7s Mint. 5 of the 7 values with slight perf staining. Cat £300 (7) PHOTO-PLATE 1	200
361	C	1918 (AP1) Cover with Christmas Island 5c Coconut Plantations Ltd Local tied to a local address (1)	200
362	C	1918 (OC17) Long Registered 'On His Britannia His Majesty Service' with KGV 1/2d to 1/- values tied by Ocean Island cds. Backstamped Registered/Sydney, New York Reg & Bayonne NJ Registered. Fine condition (1)	200
363	C	1928 (MR3) Cover with NZ 1d Field Marshal tied by Fanning Island English black type cds to NZ. Also a similar cancel 2 OC 35 with a violet cds to England not complete. The 2nd cover with light staining. Interesting Pair Covers (2) PHOTO-PLATE 16	250
364	C	1930's Cover with KGV 1/2d, 1d, 1 1/2d values tied by 'PO Tabiteira' black handstamp addressed to Ocean Island. No backstamp. Scarce (1) PHOTO-PLATE 16	400
365	C	1930's Cover with KGV 1/2d, 1d, 1 1/2d values tied by large 'PO Nonouiti' violet handstamp addressed to Ocean Island. No backstamp. Scarce (1) PHOTO-PLATE 16	300
366	C	1930's Iremonger Registered Cover with KGV 5d & 6d values tied by violet 'Marakai' handstamp. Registered at Tarawa. Backstamped Registered London cancel. Scarce (1) PHOTO-PLATE 16	400
367	C	1935 (MY25) Cover to USA with 10c Coconut Plantations Ltd Local tied by fine cds. Has US stamp stuck on at left. No backstamps Has minor perf staining. Scarce (1) PHOTO-PLATE 16	250
368	C	1938 Cover with KGV 1/2d Pair tied by 'Nikunau Island' black handstamp to Ocean island. Backstamped Ocean Island. Scarce (1) PHOTO-PLATE 16	300
369	C	1939 (9JA) Registered Roger Wells Cover with 'PO Tamana' large rubberstamped handstamp. Has KGV 4d & 1/2d values tied by Tarawa cancels. Backstamped GPO Sydney & Registered Birmingham cancels. Scarce (1) PHOTO-PLATE 16	300
<u>GREAT BRITAIN</u>			
370	C	1840 (JY11) Part Entire bearing 1d Black Plate 4 Letters FD with 3 Margins tied by Red Maltese Cross cancel addressed to Piccadilly. (1) PHOTO-PLATE 16	300
371	U	1840 QV 1d Black SG 2 Plate 5 Letters GI with 4 Good Margins cancelled by Black Maltese Cross cancel. Cat £400 (1) PHOTO-PLATE 1	250
372	U	1840 QV 1d Black SG 2 Plate 5 with 4 Close Margins Fine Used cancelled by Red Maltese Cross cancel. Cat £400 (1) PHOTO-PLATE 1	250
373	U	1840 QV 1d Black SG 2 Plate 6 Letter QD Fine Used with 4 Close Margins cancelled by Red Maltese Cross cancel. Cat £400 (1) PHOTO-PLATE 1	250
374	U	1840 QV 1d Black SG 2 Plate 7 Fine Used with 4 Close to Good Margins. Letter PH cancelled by Red Maltese Cross cancel. Cat £400 (1) PHOTO-PLATE 1	275
375	U	1840 QV 1d Grey-Black Plate 1a Fine Used (Letters GE) cancelled by Red Maltese Cross cancel. Cat £500 (1) PHOTO-PLATE 1	300
376	U	1840 QV 2d Deep Full Blue SG 4 Letters QL Fine Used with 4 Margins cancelled by Black Maltese Cross cancel Cat £1150 (1) PHOTO-PLATE 1	500
377	C	1841 (21JA) Entire with 1d Black Plate 2 tied by Red Maltese Cross cancel with 3 Margins. Letters BG addressed to Nottingham (1)	400
378	C	1841 (FE18) 1d Mulready Letter Sheet SG ME1 cancelled with Black Maltese Cross addressed to Howden. Backstamped Selby. Has a light horizontal crease on the front otherwise good. Cat £525 (1) PHOTO-PLATE 15	250
379	C	1841 (MY 7) Entire with QV 1d Black Plate 4 Letter SL with 3 Margins tied to Dundee (1)	400
380	U	1841 QV 2d Blue Imperfs SG 13/15 - 5x 4 Margins examples Mostly Fine Used with different shades. Cat £500 (5)	250
381	*	1847/54 QV 10d Brown Embossed SG 57 with 3 Margins Mint No Gum. Very Scarce Cat £11,500 as Mint (1) PHOTO-FRONT COVER	1500

382	C	1859/1866 4x Early Cover with QV values: - 1859 Entire ex Baltimore USA to England & redirected from London to Paris with 2d Blue SG 45 & 6d SG 69 added, 1861 Entire to Holland bearing 4d SG 66 x2 plus 1d Red-Brown Posted at London, 1861 Cover to USA with 1/- Green SG 72 Posted at London to Philadelphia, and 1866 Entire to Palermo bearing 6d Lilac SG 85 Posted at Liverpool. Nice Lot of Cover SG Cat £1240+ (4)	500
383	*	1867/83 QV 5/- Rose Anchor Wmk Plate 4 SG 134 Mint with minor blunt perfs at bottom left. Scarce. Cat £35,000 (1) PHOTO-PLATE 1	3500
384	U	1867/93 QV £5 Orange SG 137 Fine Used with 'Glagow 1894' cds. Cat £4750 (1) PHOTO-FRONT COVER	4500
385	C	1873 (4NO) Shipping Weighbill for 170 tons of Pig Iron via the vessel 'Courtland' ex Leith to Hamburg, Germany. Embossed with 6d Stamp Duty. Interesting (1)	100
386	P	1880's Charles Whiting Large Green/Red Essay (285x212mm) with light ageing. Very Scarce (1)	750
387	*	1881 QV 1d Lilac Imprimator Imperf single. Good Mint (1) PHOTO-PLATE 1	200
388	C	1882 (6AU) Registered Perfin Cover with 2x QV 1 1/2d SG 167 Perfined 'HB & H' tied by Registered Cornhill BO cancels to Annan (with backstamp). Minor staining & soiling. Cat £160 on Cover (1)	75
389	*	1887 QV 1/2d Orange Imprimator single Imperf Fine Mint (1) PHOTO-PLATE 1	250
390	*/**	1887/92 Jubilee Set SG 197/214 Unhinged except for the 4d & 5d values. Good Appearance. Nice lot Cat £650+ (14) PHOTO-PLATE 1	700
391	U	1887/92 QV £1 Green SG 212 Fine Used postmarked with part Registered cds. Cat £800 (1) PHOTO-PLATE 1	500
392	U	1887/92 QV £1 Green SG 212 Very Good Used Cat £800 (1) PHOTO-PLATE 1	375
393	**	1913 £1 Blue-Green Seahorse SG 404 Fine Unhinged. Very Scarce Cat £4800 (1) PHOTO-FRONT COVER	4500
394	U	1913 £1 Blue-Green Seahorse SG 404 Fine Used. Very Scarce Cat £1600 (1) PHOTO-PLATE 1	1250
395	**	1929 £1 PUC SG 438 Fine Top Marginal Unhinged. Cat £750 (1) PHOTO-PLATE 9	1000
396	U	Government Parcels 1887/89 QV 1/- Green SG 068c (Dot to left of the 'T' variety) postmarked with 'W.D.O.' Bullseye cancel. Well Centred. Cat £500 (1) PHOTO-PLATE 1	150
397	U	Telegraph 1876 QV £5 Orange SG T18 Nice Used. Very Scarce Cat £3200 (1) PHOTO-PLATE 1	2000
<u>GREENLAND</u>			
398	**	1945 Pictorials Set SG 8/16 Unhinged Cat £340 (9) PHOTO-PLATE 2	250
<u>GRENADA</u>			
399	*	1906/08 Badge/Ship Definitives Set Overprinted 'Specimen' SG 82s/85s,87s/88s Mint with odd blunt/short perf. Cat £250 (10) PHOTO-PLATE 2	200
<u>GUYANA</u>			
400	P	1947 50f Eagles in a Black Deluxe Die Proof (157x120mm) signed. Fine Item (1)	300
<u>HONG KONG</u>			
401	**	1973 Definitives Set Complete 10c to \$20 in Top Marginal Corner Sheet Number Blocks of 4 Fine Unhinged Cat £300 (72)	250
<u>HUNGARY</u>			
402	C	1896 (29DE) Uprated 2k Printed Postcard (showing a chicken battery shed and slaughter room) with 3k Definitive tied by 'Verseoz' cancels to Olten. Bird Thematic Item (1)	50
<u>ICELAND</u>			
403	C	1930 (26JU) First Flight Cover Pingvellir to Reykjavik with '30 10a Falcon & Parliamentary Millenary Celebration 15a & 20a values SG 173/175. 300 Covers Carried Fine Item (1) PHOTO-PLATE 16	250

404	P	1930 10a Falcon in an undenominated Plate Proof in Ultramarine on thick paper. Bird Thematic item. Scarce (2) PHOTO-PLATE 2	150
405	C	1931 (2JU) Cover with 10a Falcon Official stamp SG 0189 tied by 'FRA ISLAND' handstamp plus 'Kobfnhakn' cancel to Scotland. No backstamp. The stamp Cat £120 alone. Bird Thematic item (1) PHOTO-PLATE 16	200
<u>IRAN</u>			
406	C	1956 (19SP) Uprated 2.50r Aerogramme with 3r & 50d Adhesives Posted at Tehran on Inaugural First Flight from Tehran to Hamburg. Has an Eagle illustration. Bird Thematic Item (1)	50
<u>ITALY</u>			
407	C	1857 (18OC) Stampless Wrapper bearing the black cachet of the great 'Golden Eagle' on a letter of a Italian Military Division to Correggio. Not liable to postal charge. The cachet is repeated on the reverse. Bird Thematic Item (1)	150
408	*	1863/65 15c Pale Blue SG 12a Mint with a heavier hinge. Scarce Cat £3000 (1) PHOTO-PLATE 2	500
409	*	1901 Laureated Design Definitives Set to 50c SG 62/70 Mint with some gum ageing Cat £2190 (9) PHOTO-PLATE 2	400
<u>JAPAN</u>			
410	C	1903 (MY) Military Mail Postcard written in Japanese. Has an illustration of 2 Birds on a boat with a man using oars. Bird Thematic Item (1)	50
411	C	1949 (1MR) 38y Geese Airletter Type A White Pattern on Grey Posted on First Day to India. Bird Thematic Item (1)	50
<u>KENYA UGANDA & TANGANYIKA</u>			
412	U	British East Africa 1891 1/2 Anna on 2a SG 20 'Mombasa Provisional' Fine Used with a blue horizontal registration line on the front. Very Scarce. Cat £1100 (1) PHOTO-PLATE 2	900
413	*	British East Africa 1895 2r Brick-Red SG 44 Good Mint. Has a dealer's mark on the back. Cat £500 (1) PHOTO-PLATE 2	500
414	*	British East Africa 1895 4 1/2a Brown-Purple SG 39b Good Mint. Very Scarce Cat £1200 (1) PHOTO-PLATE 2	1000
415	*	British East Africa 1895 4r Ultramarine SG 46 Good Mint. Has a dealer's mark on the back. Cat £200 (1) PHOTO-PLATE 2	200
416	*	British East Africa 1895 7 1/2a Black SG 41a Double Overprint with minor gum ageing. Very Scarce Cat £850 (1) PHOTO-PLATE 2	500
417	U	East Africa & Uganda 1912/21 KGV 500r Green & Red/Green SG 63 tied fiscally on small piece. Scarce Cat £850 (1) PHOTO-PLATE 9	600
418	*	KUT 1938/54 £1 P11 3/4 x 13 SG 150 Good Mint Cat £500 (1) PHOTO-PLATE 2	400
<u>KOREA</u>			
419	P	1966 3w Bird Original Pencil & Watercolour Artwork from an unaccepted design on thin art paper with ink notation. Minor peripheral stains from the production process. Bird Thematic Item (1) PHOTO-PLATE 16	200
<u>LATVIA</u>			
420	C	1929 (9AP) Registered Cover to London with '28 Airs 10s,15s & 25s in Pairs Posted at Riga (1)	50
<u>LIECHTENSTEIN</u>			
421	C	1931 (10JU) Zeppelin Airmail Cover with 2f Zeppelin tied by VADUZ Zeppelin red cds to Heiden with Lausanne transit cds. Prost 127Cb. Fine & Very Scarce (1)	500
<u>MALAYA (STRAITS SETTLEMENTS)</u>			
422	*	1892/99 QV \$5 Orange & Carmine SG 105 Good Mint Cat £450 (1) PHOTO-PLATE 2	450

423	U	1892/99 QV \$5 Orange & Carmine SG 105 Very Good to Fine used. Cat £325 (1) PHOTO-PLATE 2	300
-----	---	---	-----

MAURITIUS

424	U	1862 QV 1/- Deep Green Intermediate P14-16 SG 55 Nice used Cat £325 (1) PHOTO-PLATE 2	250
-----	---	---	-----

425	**	1969/73 50c Violet Spider Shell SG 393a Red Omitted Unhinged Cat £190 (1) PHOTO-PLATE 2	200
-----	----	---	-----

MEXICO

426	C	1886 1c (60grms) & 2c (120grms) Newspaper Wrappers - one to Paris and the other to London. Both with a Bird emblem at top. Bird Thematic items. (2)	50
-----	---	---	----

427	C	1889 5c Printed Postcard with 'Misplaced Inverted Value' Mint Bird Thematic item (1)	50
-----	---	--	----

NATAL

428	P	1874/99 QV Plate Proofs in Blocks of 4 - 1d Rose, 3d Blue & 6d Violet all Overprinted 'Cancelled' Minor staining. Very Scarce (12) PHOTO-PLATE 9	500
-----	---	--	-----

NAURU

429	*	1916/23 KGV 10/- Seahorse SG 23c with Treble overprint, 2x Albino. Fine & Very Scarce. Cat £1700 (1) PHOTO-PLATE 2	1500
-----	---	--	------

430	C	1918 (JE15) Registered KGV Censored Cover to Copenhagen, Denmark bearing KGV 4d,5d,6d Definitives tied by PO Pleasant Island cancels. Has red 'Passed By Censor' 1 AU 18 cancel. Has White Censor Tape at left. Has Copenhagen part receiving cds. Fine item (1)	300
-----	---	--	-----

431	**	1924/48 Ship Definitives Set SG 26B/39B Unhinged. Has faint gum toning on several values incl the 5/- & 10/- values. Cat £200 (4)	200
-----	----	---	-----

432	U	1937/48 Ship Definitives Set SG 26B/39B Fine Used. Cat £225 (14) PHOTO-PLATE 2	250
-----	---	--	-----

433	P	1978 Definitives 30c,32c,40c,50c All Bird Stamps in Imperf Proof singles mounted on Harrison & Sons Ltd Presentation Cards. Fine Items (4) PHOTO-PLATE 17	750
-----	---	---	-----

NETHERLANDS

434	C	1934 (18 DE) 'UIVER' Crash Cover per Special Christmas Flight. The plane was struck by lightning and crashed in the desert. Has Bird Flight cachet in red. Bird Thematic Item (1) PHOTO-PLATE 16	200
-----	---	--	-----

435	*	1951 Seagull Airs Pair Good Mint Cat 700 Euros (2) PHOTO-PLATE 2	500
-----	---	--	-----

436	C	(New Guinea) 1962 United Nations Temporary Executive Authority International Money Order bearing 15c Bird & 55c UNITEA Overprints tied to Holland (1) PHOTO-PLATE 16	50
-----	---	--	----

NETHERLANDS INDIES

437	C	1933 (18DE) Special Printed Christmas Airmail Flight by Zilvermeeuw (Silver Gull) red cancel, but engines were defected and so Pelikaan (Pelican) took its place and the cancel applied at Bandoeng 26/12/33. Bird Thematic item (1)	150
-----	---	--	-----

NEW CALEDONIA

438	C	1943 (15AP) Registered Censored Cover to NZ with 10c,40c,80c,4f & 10f Kagu (Bird) Definitives Posted at Noumea. The cover has a 'Military Suspension' cachet and reforwarded in 1945. No backstamps. Interesting Cover held for 2 Years due to 'Service Suspended. Minor ageing. (1)	200
-----	---	--	-----

439	P	Postage Dues 1948 Set of 10 SG D328/37 Large Die Proofs 160mmx110mm. Fine & Scarce (10)	500
-----	---	---	-----

NEW GUINEA

440	C	1915 (JU16) Registered Cover to NZ. Has untied KGV 1d Red NWPU plus GRI 3d Registration Rabaul SG 33 label tied by fine oval 'Rabaul/New Britain' violet cancel. Passed by Censor cachet. Backstamped Wellington Registered (1) PHOTO-PLATE 16	500
-----	---	--	-----

441	*/**	1915/16 & 1916/22 KGV 1/2d Green 2x Blocks of 30 SG 65 & 102 lightly hinged at top. One block with minor perf staining. Noted many varieties on 1 Block (60)	100
-----	------	--	-----

442	C	1937 (6NO) OHMS Registered Cover to England bearing 5d Birds of Paradise OS Posted at Rabaul. Fine (1)	100
-----	---	--	-----



740



744



745



746



748



747



774



754



749



753



756



752



757



755



759



758



767



768



760



764



763



762



783



Ex 787



Ex 784



785



786



788



782



565



779



573



588



780



569



570



581



590



603



630



867



893



887



886



888



890



898



878



875



Ex 894



872



882



877



897



889



883



892



899



896



885



869



884



873



874



879



535



563



519



Ex 567



743



Ex 761



287



315



395



417



445



Ex 444



Ex 428



Ex 610



614



636



627



637



643



642



641



652



646



654



655



659



671



674



673



672



682



286



577



647



585



645



584



658



663



702



707



706



721



722



773



765



771



Ex 778



677



680



705



709

443	C	1938 (15MR) Registered Flight Cover Rabaul-Sydney by W R Carpenter Airlines (Eustis P127) bearing Birds of Paradise 1d,4d(2) & 1/- values tied by Rabaul cds. Addressed to London. Fine & Scarce (1) PHOTO-PLATE 16	250
-----	---	---	-----

NEW SOUTH WALES

444	*	1897 Diamond Jubilee & Hospital Charity Pair SG 280/81 - the 1/- Mint with light gum age & 2/6 Mint No Gum. Cat £300 (2) PHOTO-PLATE 9	150
-----	---	--	-----

NEWFOUNDLAND

445	P	1928 14c Cabol Tower, St John's SG 174 Die proof in light blue (31x46mm). Fine & Very Scarce (1) PHOTO-PLATE 9	500
-----	---	--	-----

NIUE

446	C	1902 (9AP) Early Cover with 1/2d Mt Cook Overprint tied by Niue/New Zealand violet cds addressed to Wellington and redirected to the BNZ Ashburton. Backstamped Auckland & Ashburton. Fine Early Niue Cover (1) PHOTO-PLATE 16	500
-----	---	--	-----

447	C	1939 (25OC) Stampless Cover with 'Official/Niue Paid' handstamp cancelled at Niue to NZ with 'Sunday Island Mail/No Stamps Available/Per Yacht Ngataki' endorsed to Niue. A little stained and soiled. Rare (1) PHOTO-PLATE 16	750
-----	---	--	-----

NORFOLK ISLAND

448	P	1978 Christmas Imperf Proof singles stuck on Harrison & Sons Ltd Printed Cards. Fine Christmas Thematic Items. Very Scarce (1)	500
-----	---	--	-----

NORWAY

449	C	1951 (10FE) Registered 'Dronning Maud Land' with Penguin cancel Polar Cover to New Zealand with special red cachet. Bird Thematic Cover (1)	100
-----	---	---	-----

OCEANIC SETTLEMENTS

450	C	1885 (11JU) Cover to Bordeaux, France with French 25c Definitive tied by Papeete cds. Endorsed Via San Francisco & New York. Has part backstamp. Minor ageing. Fine Early period Cover (1) PHOTO-PLATE 17	600
-----	---	---	-----

451	C	1895 (7JN) Cover with 1893 3x 15c Tahiti Overprints SG 12 plus Oceanic Settlement 2c Gutter Pair tied by PAPEETE cds to East Melbourne, Victoria and addressed to MR JF Hambly. Backstamped Auckland. Some staining. Early Period Cover & Very Scarce (1) PHOTO-PLATE 17	500
-----	---	--	-----

452	C	1907 (18JY) Picture Postcard (Vahere/Moorea) to Australia bearing Tahiti 10c/15c Surcharge SG 57 & 10c Oceanic Settlements Definitive tied. Minor perf staining. Very Scarce (1) PHOTO-PLATE 17	500
-----	---	---	-----

453	C	1915 (5JA) Stampless WW1 Local Cover with fine boxed 'Troupes Mobilisees/De/Tahiti' handstamp in blue plus Papeete cds. Fine & Rare (1) PHOTO-PLATE 17	500
-----	---	--	-----

PAPUA

454	U	1916/31 Bi-Colour Lakatois Definitives Set to 2/6 SG 93/103 Fine Used Cat £100 (11) PHOTO-PLATE 2	100
-----	---	---	-----

PAPUA & NEW GUINEA

455	U	Revenue Departure Tax Stamps 1994 Used & on Passenger Ticket plus 1995 Mint (3)	50
-----	---	---	----

PENRRHYN ISLAND

456	U	1903 6d Red Kiwi SG 15 with 'Imperf at Top' variety. Fine Used (1) PHOTO-PLATE 2	100
-----	---	--	-----

POLAND

457	C	(German Occupation) 1940 Registered Cover bearing 40g on 20pf & 2z on 100pf Overprints tied by 'Stochnest (Polen)' boxed violet handstamps to Mulheim - Ruhr. Backstamped Mulheim 20/01/40. Stochnest = 'Stork Nest' (the original name before Occupation was Osieczna). Fine condition. Bird Thematic Item (1)	50
-----	---	---	----

SAMOA

458	C	1899 (SP8) Early UPU Picture Postcard bearing 1d Brown Palms tied by Apia cds to Cottbus, Germany. Has fine 'NZ Marine PO/RMS Mariposa' cancel. Has Cottbus 6/10/99 receiving cds. Fine & Very Scarce Marine Card (1) PHOTO-PLATE 17	600
459	C	1914 (29AU) Locally Addressed Cover bearing 2x 1/2d on 3pf & 2x 2 1/2d on 20pf GRI's SG 101 & 104 tied with First Day cancels. Scarce (1)	450
460	*	1914/24 QV £2 Purple Long Type Fine Mint. Unpriced in SG. Very Scarce (1) PHOTO-PLATE 2	500
461	C	1918 (14JAP) Picture Postcard Real Photo Stampless with boxed green 'Passed By Censor/3/Samoa' handstamp addressed to Mr Hanssen, Prisoner Of War, Motuihi Island, New Zealand. Has violet 'Passed By The/Military Camp/N.Z.' cachet plus Wellington machine cancel. The postcard has odd pinholes. Nice WW1 POW Mail Item with German Certificate (1)	500

SARAWAK

462	U	1869 3c Brooke SG 1 Very Fine Used. Cat £225 (1) PHOTO-PLATE 2	150
-----	---	--	-----

SOMALILAND

463	*	OFFICIAL 1904/05 KEVII Set Overprinted 'Specimen' Good Mint Cat £150 (5) PHOTO-PLATE 2	150
-----	---	--	-----

SOUTH AFRICA

464	C	1900 (29JN) 'PRETORIA FRIEND' Boer War Newspaper Posted at Pretoria to New Zealand. has Brunswick (NZ) 14 AU 00 receiving cds. Fine & Rare Boer War Military Period Item (1)	450
-----	---	--	-----

SOUTHERN RHODESIA

465	*	1931/37 KGV Definitives Set incl Perf varieties SG 15/27 (Missing SG 16c,19a & 19b,23b) Good Mint Cat £488 (27) PHOTO-PLATE 2	300
-----	---	---	-----

ST KITTS-NEVIS

466	*	1903 Definitives Set (No 2 1/2d) SG 1s,3s,5s/10s Good Mint Cat £160 (9) PHOTO-PLATE 2	150
-----	---	---	-----

ST LUCIA

467	*	1935 2 1/2d Silver Jubilee SG 111g 'Dot to left of chapel' variety Good Mint Cat £180 (1)	180
-----	---	---	-----

ST PIERRE ET MIQUELON

468	C	1926 (7JY) Registered Government Printed 30f envelope uprated with 35f & 40f Bird Definitives Posted to Saintes. No backstamps Bird Thematic Item (1)	50
-----	---	---	----

ST VINCENT

469	P	1977 Jennifer Toombs Sketch for the border of a Christmas Stamp on Card. Signed (1)	100
-----	---	---	-----

SWAZILAND

470	*	1935 2d Silver Jubilee SG 22a Extra Flagstaff variety Good Mint Cat £140 (1)	140
471	*	1935 6d Silver Jubilee SG 24a Extra Flagstaff variety Good Mint Cat £140 (1) PHOTO-PLATE 2	140

SWITZERLAND

472	U	1854/62 2r Grey Imperf SG 46 Fine Used with 4 even margins. Cat £650 (1) PHOTO-PLATE 2	400
473	U	1945 War Relief Fund 3f & 7f Imperf (ex Min Sheet SG MS446a) Fine Used on piece plus 1945 Centenary of Basel Cantonal Stamp Issue Min Sheet SG MS446b Fine Used on piece. Cat £475 (2)	250
474	C	Military Fieldpost Printed Letter from Pigeon Post Company No 7 cancel. Also with stamp imprint showing a pigeon. Bird Thematic Item (1)	50

TANGANYIKA

475	*	1917/21 KGV 'GEA' 50r Definitive SG 62 Mint with a minor surface scuff on the left edge of the design. Very Scarce Cat £750 (1) PHOTO-PLATE 2	400
-----	---	---	-----

476	*	1917/21 KGV 'GEA' Definitive Overprints Set to 20r SG 45/61 Mint with odd blemish. Cat £550 (16) PHOTO-PLATE 2	400
477	*	1917/21 KGV 'GEA' Definitive Overprints Set to 10r SG 45/60 Good Mint Cat £250 (15)	250
478	*	Nyasaland Force 1916 KGV 'NF' Specimens SG N1s/5s Good Mint Cat £250 (5) PHOTO-PLATE 2	250
<u>THAILAND</u>			
479	U	1928 King Prajadhipok Definitives Set on album Page SG 252/66 Nice Used Cat £200 (15)	150
<u>TOGO</u>			
480	*	1915 KGV 1d SG H35(h) with an Inverted Surcharge Error. Good Mint with a normal Cat £170 (2) PHOTO-PLATE 2	150
481	*	1916/20 KGV 20r Purple & Black/Red SG H58s Overprinted 'Specimen' Good Mint Cat £275 (1) PHOTO-PLATE 2	200
<u>TOKELAU ISLAND</u>			
482	C	1920's Cover with Samoan 8d, 1/2d, 9d & 5d Huts tied by large 'Gilbert & Ellice Islands/Protectorate/Postal Department' violet handstamp addressed to Capt FJ Williams, Apia. Used at Nukunono. Cover trimmed at right with odd blemishes. Very Scarce Forerunner Mail (1) PHOTO-PLATE 17	500
483	C	1931 (4NO) Cover with 'Swain's Island' violet cachet signed by 'AE Jennings' with a US 2c Commem tied to USA. Has Apia cds at left. No backstamp. Scarce (1) PHOTO-PLATE 17	300
484	C	1945 3x Forerunner Cover - Fakaofu, Nukunono & Atafu with Samoa 1d values to NZ. Also 1965 Cover to England with 1d & 2d Pictorials & 1/-/1/2d Overprint Posted at Fakaofu with Postage Due cachet with manuscript '72' added (4)	50
485	P	1985 48c Native Tree (Fala) SG 121 in a Proof Corner Plate Block of 4. Designed by RM Conly, Waikanae, NZ. Nice Thematic item (4)	250
486	P	1985 60c Native Trees (Kanava) SG 122 in a Proof Corner Plate Imperf Block of 4. Designed by RM Conly, Waikanae, NZ. Fine Thematic item (4)	250
<u>TONGA</u>			
487	C	1894 (11FE) Commercial Cover to NZ with 2 1/2d on 8d Surcharge SG 23 tied by NEIFU cds. Backstamped Nukualofa, Auckland & Melbourne cancels. Minor staining. Scarce single franking (1) PHOTO-PLATE 17	500
488	C	1903 & 1912 Stampless OHMS Long Covers - both covers have the 'Tongan Government Frank', one from Vavau and the other from Nukualofa. The 1903 sent locally to Nukualofa, the 1912 to New South Wales, Australia. Nice Pair (2)	300
489	C	1911 (25OC) OHMS Commercial Stampless Cover to Auckland. Has Vavau Govt Frank Posted at Vavau. Also 'HM Customs, Neiafu, Vavau' oval cachet at bottom left. Light staining. Very Scarce (1) PHOTO-PLATE 17	300
<u>TURKS & CAICOS ISLANDS</u>			
490	*	1922/26 KGV Definitives Set (No 1/4d) Overprinted 'Specimen' Good Mint Cat £250 (13) PHOTO-PLATE 2	200
<u>UNITED STATES OF AMERICA</u>			
491	*	1893 Columbus \$2 Brown Red Scott #242 Fine Used Cat US\$600 (1) PHOTO-PLATE 2	600
492	*/**	1893 Columbus Part Set to 30c Scott #230/239 - the 1c 2x shades, 2c are unhinged, the 5c Mint No Gum, the 15c Mint Part Gum with a slight thin. Cat US\$925 (11) PHOTO-PLATE 2	450
493	U	1893 Columbus Set to \$1 Scott 230/241 Very Good to Fine Used. Minor blemish on the 8c value Cat US\$1050+ (12) PHOTO-PLATE 2	750
494	*	1894 \$1 Perry No Wmk Scott 261 Nice Mint with Imperf Margin at Top, 1894 \$2 Madison Scott 262 Mint Centred to top, \$5 Marshall Scott 263 Mint with Imperf Left Margin, 1894 Presidents No Wmk Part Set to 50c incl extra shades 1c, 2c(2) & 5c values Mint except for the 1c, 5c, 6c, 8c values which are Mint No Gum, and 1898 \$2 Trans-Mississippi Scott 93 Good Mint. Good Lot Cat US\$12,350 (18) PHOTO-PLATE 3	2500

495	**	1933 50c Zeppelin Scott #C18 Fine Unhinged Cat US\$90 (1) PHOTO-PLATE 3	90
496	C	1949 4x Inwards Covers from Spain (2), Portugal & Italy all addressed to 'Rosalind Russell' American Actress. One Spanish Cover has a 'Missent To Los Angeles, Calif.' (4)	50
497	*/**	Revenue Hunting Bird Stamps - 1935 \$1 Rose Lake Scott #RW2 with part gum, 1944 \$1 Red Orange Scott #RW11 unhinged, 1953 \$2 Deep Rose Brown Scott #RW20 with slight gum and 1956 \$2 Black #RW23 unhinged Cat US\$585 (4) PHOTO-PLATE 3	300

URUGUAY

498	C	1930 (21MY) Graf Zeppelin LZ127 Flight from Montevideo to Friedrichshafen, Germany. Has Europe/Pan American Round Flight violet cachet. Has Bird stamps tied. Bird Thematic Cover (1) PHOTO-PLATE 17	100
499	C	1935 (30NO) Registered Graf Zeppelin LZ127 15th South American return flight to Friedrichshafen. Has Condor Agency cachet applied at Montevideo for this flight only. (1)	100

WALLIS & FUTUNA

500	C	1922 (4FE) Censored Cover to New South Wales bearing 1920 15c (4), 30c & 45c Overprints tied by 'Protectorate Francais/Futuna cancels. Backstamped 'Nouvelles Hebrides/Port Vila' Very Scarce (1) PHOTO-PLATE 17	500
501	P	1945 Free French Administration Surcharges SG 141/48 Set of 8 Large Die Proofs (160x120mm) Fine & Very Scarce (8)	500

WESTERN AUSTRALIA

502	*	1854/55 4d Pale Blue Swan SG 2 with 4 Good Margins. Mint No Gum Cat £375 (1) PHOTO-PLATE 3	250
-----	---	--	-----

YUGOSLAVIA

503	C	1934 (29JU) Registered Cover with 20th Anniversary of Sokol (Falcon) Games with Set plus extra 75p+25p Green tied by a special red cancel Bird Thematic Item (1)	50
-----	---	--	----

ZANZIBAR

504	*	1908/09 Definitives Set Overprinted 'Specimen' SG 225s/238s Good Mint Cat £325 (14) PHOTO-PLATE 3	250
-----	---	---	-----

NEW ZEALAND STAMPS

1855-62 IMPERF FULL FACE QUEENS

505	U	1/- Blue-Green SG 17/CP A6c(2) Fine Used with 4 Good to Large Margins. Minor ageing and a hinge thin. SG Cat £1800/CP Cat \$4000 (1) PHOTO-PLATE 3	1000
506	U	1/- Deep Green NZ Watermark Roulette 7 SG 104/CP A6h(z) Good to Very Good Used with roulettes on 3 sides. Postmarked with Obliterator '16' cancel. Signed on the back by Dr Fercehnbauer. SG Cat £1100/CP Cat \$2750 (1)	1000
507	U	1/- Deep Green SG 46 with 4 Margins Good to Very Good Used. Has a slight thin. CP Cat \$1000 (1)	100
508	U	1/- Dull Emerald-Green SG 16/CP A6c(1) Very Good Used with 3 Good Margins postmarked with Perkins Bacon Obliterator '1'. Good colour and no faults. SG Cat £1800/CP Cat \$4000 (1) PHOTO-PLATE 3	2000
509	C	1/- Green on blued paper Bisect on Cover SG 6a/CP A6b(y) tied by Perkins Bacon Obliterator '18' cancel addressed to 'James Crawford Esq.W.S., Duke Street, Edinburgh. Backstamped Otago DE 23 1858 unfarmed cds & Edinburgh cancels. The wrapper is folded vertically and has three burn marks on its face. it is stated that the item was damaged in the Blitz during WW2 being under water for several weeks in Chancery Lane. Odenweller R-19 Bisect Cover. Has RPS NZ 1996 Certificate. SG Cat £26,000/CP \$65,000. Rare Item (1) PHOTO-FRONT COVER	10000
510	*	1/- Green SG 45 Mint No Gum with close or cut into margins. CP Cat \$1750 (1)	200
511	U	1/- Yellow Green NZ Watermark Roulette 7 SG 104/CP A6h(z) Very Good Used with slight thinning at top. Has roulettes on 3 sides. Very Scarce. SG Cat £1100/CP Cat £2750. Has Odenweller 1987 Certificate (1) PHOTO-PLATE 3	750

512	U	1/- Yellow-Green Roulette 7 SG 57/CP A6d(y) Very Good to Fine used with a thin at top left. Odenweller 1987 Certificate. SG Cat £900/CP Cat \$2250 (1) PHOTO-PLATE 3	450
513	U	1d Carmine Vermilion NZ Watermark Roulette 7 SG 101/CP A1j(x) Very Good used with slight thins at top. Very Scarce. SG Cat £3000/CP Cat \$7500 (1) PHOTO-PLATE 3	1500
514	U	1d Carmine-Vermilion SG 101/CP A1j(y) Nice used with roulettes on 1 side. Brandon 1992 Certificate. Very Scarce. SG Cat £3000/CP Cat \$7500 (1) PHOTO-PLATE 3	3000
515	U	1d Deep Carmine Red SG 1/CP A1a Fine Used with 2 close or cut into margins on the other. Fine Colour. Has RPS NZ 2017 Certificate. SG Cat £17,000/CP Cat \$40,000 (1) PHOTO-FRONT COVER	3500
516	U	2d Blue NZ Watermark Roulette 7 Pair SG 102/CP A2j(z) cancelled with Obliterator '1' cancels. RPS London 1984 Certificate. Fine & Rare multiple. CP Cat \$4500 (2) PHOTO-PLATE 3	2000
517	U	2d Blue Roulette 7 SG 49/CP A2d(y) Very Good to Fine Used. Has roulettes on 2 sides. SG Cat £475/CP Cat \$1250 (1) PHOTO-PLATE 3	400
518	U	2d Blue SG 10 in a Horizontal Strip of 3 with a probable use of metal straight-edge to divide the sheet horizontally thus producing parallel sloping edges horizontally. Has BPA 1999 Certificate. Interesting item (3) PHOTO-PLATE 3	500
519	U	2d Blue SG 10/CP A2c(3) Fine Used with 4 Close even Margins. SG Cat £180/CP Cat \$350 (1) PHOTO-PLATE 8	200
520	*	2d Blue SG 36 Mint No Gum with 3 Margins. Minor surface blemishes. CP Cat \$1750 (1)	200
521	U	2d Blue SG 5/CP A2b tied on piece by Perkins Bacon Obliterator '11' (Ahuriri) with an unframed 'Wellington JA 18 18 1858' cds at left. The stamp has 4 close to good margins. Minor ageing to the piece. Nice dated useage (1) PHOTO-PLATE 3	500
522	C	2d Deep Ultramarine SG 8a/CP A2c(1) - a Cover with a Strip of 3 cancelled by obliterator '12' to England. Has red 'Ship Letter' handstamp and London Paid DE 1 58 red cds on the front. Backstamped Petre JY 24 1858, Wellington JY 31 1858 & Lynn DE 1 58 cancels. Ex Inoue. Has RPSNZ 1996 & Odenweller 2006 Certificates. SG Cat £3000/CP Cat \$7500 for the stamps alone. The stamps have 2 to 3 Margins. Fine & Scarce item (1) PHOTO-PLATE 17	2000
523	*	2d Greenish Blue SG 38/CP A2d(11) with 4 Close to Very Large Margins. Mint No Gum. Has a minor surface mark between the eyes. Odenweller 2016 Certificate. SG Cat £700/CP Cat \$1750 (1) PHOTO-PLATE 3	950
524	U	2d Pale Blue SG 9 in a Horizontal Strip of 4 Nice Used with the 3 stamps on the right with 4 Margins. Some blemishes and slight thins. Scarce Multiple (4) PHOTO-PLATE 3	600
525	U	2d Pale Blue SG 9 with a Dryprint postmarked with Perkins Bacon '18' Obliterator. 3 Margins. Nice Used (1) PHOTO-PLATE 3	200
526	*	2d Ultramarine Pelure paper SG 82/CP A2f(1) with 4 margins. Mint No Gum. Nice Colour. Very Scarce with RPS London 1959 Certificate. SG Cat £5500/CP Cat \$20,000 (1) PHOTO-FRONT COVER	5500
527	U	2d Ultramarine SG 37 with just 4 Margins Good Used with 'Dunedin' Obliterator cancel. CP Cat \$2800 (1)	300
528	U	3d Lilac SG 117a/CP A3d(T) Fine Used with with 2 Very Large Margins CP Cat \$1250 (1) PHOTO-PLATE 4	500
529	U	3d Mauve SG 118a/CP A3d(x) Imperforate Pair with 2/3 Margins. Has a small scissor cut at top in the middle margin. SG Cat £1900/CP Cat \$5000 (2) PHOTO-PLATE 3	1500
530	U	6d Black-Brown SG 41 Fine Used with 4 Good Margins - very close at bottom right. CP Cat \$450 (1)	50
531	*	6d Deep Brown Richardson SG 13/CP A5a(3) Mint with gum (possibly regummed). Has 3 Close Margins. Great colour. Odenweller 2014 Certificate. SG Cat £2750/CP Cat \$6000 (1) PHOTO-PLATE 3	2000
532	U	6d Red-Brown NZ Watermark SG 99/CP A5f with 4 margins. Very Good Used. Very Scarce postmarked with Perkins Bacon '1' cancel. SG Cat £700/CP Cat \$2000 (1) PHOTO-PLATE 3	750
533	U	6d Red-Brown Roulette 7 SG 103/CP A5f(y) Fine Used with RPS London 1953 Certificate. The cancel off the face of the queen. SG Cat £3000/CP Cat \$7500 (1) PHOTO-PLATE 3	3000

534	U	6d Yellow Brown No Watermark SG 13/CP A5a(4) Fine Used with 4 Close Margins. Light cancel. SG Cat £300/CP Cat \$750 (1) PHOTO-PLATE 3	375
535	U	6d Yellow-Brown SG 13 Fine 4 Margins with a very light cancel. CP Cat \$750 (1) PHOTO-PLATE 8	400
536	U	SET (1d Red,1d Orange,2d Blue,3d Lilac,6d Yellow Brown, 6d Black-Brown, 6d Red-Brown & 1/- Green) Imperfs. Some minor defects/blemishes Good Appearance (8)	100
<u>1862-73 FULL FACE QUEEN - CANCELS</u>			
537	U	1d Carmine-Vermilion SG 110 cancelled with part 'New Plymouth' seal signed with 'R Parris 9/1/67' manuscript cancel Fine & Unusual (1) PHOTO-PLATE 3	500
538	U	2d Orange Perf FFQ cancelled 'WW' (Windwhistle House) with Obliterator cancel. Scarce (1) PHOTO-PLATE 3	250
539	U	3d Perf FFQ SG 117 with manuscript 'K' (Kowhai) cancel. Fine item (1) PHOTO-PLATE 3	300
540	U	6d Red Brown Perf FFQ with 'ALF' (Alford Forest) Manuscript with an obliterator cancel (1) PHOTO-PLATE 3	250
541	U	Imperf 1d Carmine-Vermilion SG 97 with part 'Province-Of-Auckland/2' cds. Nice used with 3 Close Margins (1) PHOTO-PLATE 4	300
542	U	Stockcard with a range cancels - incl 1d Brown Perf 'W' (Waimea), 4d Yellow perf with M1 (Blenheim), 6d Black-Brown Imperf SG 41 with 4/Onehunga/A cancel, Oblit '21' on Perf 2d Blue, 3d Lilac & 6d Red-Brown. (6)	100
<u>1862-73 PERF FULL FACE QUEENS</u>			
543	U	1/- Deep Green SG 123/CP A6m(7) Good Used with overinked '0' (Otago) Obliterator cancel. Has minor blunt perfs at bottom left. SG Cat £350/CP Cat \$1250 (1) PHOTO-PLATE 3	300
544	U	1/- Deep Yellow-Green P13 SG 80/CP A6e(5) Nice Used SG Cat £375/CP Cat \$1000 (1) PHOTO-PLATE 3	300
545	C	1873 (DE1) Cover endorsed 'Per Claud Hamilton' bearing a single franking of the 4d Yellow Perf FFQ tied by Christchurch duplex cancel to Wellington. Backstamped Wellington DE 4 73. Cover has light staining. Scarce single franking (1) PHOTO-PLATE 17	1500
546	U	1d Brown SG 132 Provisional Imperf single Very Good Used with 3 Margins (1) PHOTO-PLATE 3	500
547	*	1d Orange SG 112/CP A1m(5) Mint with gum with a light horizontal gum crease. Centred right. SG Cat £600/CP Cat \$1500 (1) PHOTO-PLATE 3	500
548	U	2d Blue Plate 1 SG 113 a fine example of a 'kiss' print Fine Used (1)	100
549	U	2d Deep Blue CP A2n(x) Imperf single with large margins cancelled by Obliterator '20' cancel, thinned at bottom centre and 2 smaller thin spots. Odenweller 2011 Certificate CP Cat \$8000 for a pair (1) PHOTO-PLATE 3	500
550	U	2d Dull Deep Blue P13 SG 96a with a slight thin. CP Cat \$1500 (1)	75
551	U	2d Dull Deep Blue SG 96a/CP A2h(z) Fine Used with a slight thin at top. Has RPS London 1962 Certificate. SG cat £475/CP Cat \$1500 (1) PHOTO-PLATE 3	400
552	U	2d Orange NZ Watermark SG 141/CP A2v Good Used. CP Cat \$1000 (1) PHOTO-PLATE 3	300
553	U	3d Lilac SG 117 with striking 'Paper Fold' variety postmarked with part Hokitika DE 13 71 cancel. Has top left and bottom right corners missing. Interesting variety (1) PHOTO-PLATE 4	150
554	U	6d Brown P13 SG 76 Very Good Used CP Cat \$425 (1)	100
555	U	6d Pale Blue SG 136 Provisional Imperf single Very Good Used with a minor thin. Odenweller 2017 Certificate (1) PHOTO-PLATE 4	500
556	*	Simplified Set 1d to 1/- Mint on Stockcard Mint of Mint No Gum with additional 3d Mauve. The 4d Rose has slight oxidisation. Cat \$13,000 (12) PHOTO-PLATE 4	3000

1874 FIRST SIDEFACES

557	*	1/- Green P10x12 1/2 SG 164/CP C6b Mint with most original gum. Centred left. CP Cat \$1500 (1) PHOTO-PLATE 4	500
558	U	1/- Green P10x12 1/2 SG 164/CP C6b Very Good Used cancelled by Obliterator '8' (Meanee) cancel. CP Cat \$400 (1) PHOTO-PLATE 4	200
559	**	1/2d Newspaper P10 SG 143/CP B1a Fine Unhinged showing two watermark lines. Well-Centred. CP Cat \$650 (1) PHOTO-PLATE 4	500
560	*	1/2d Newspaper P12 1/2 SG 144/CP B1b Nice Mint CP Cat \$300 (1) PHOTO-PLATE 4	200
561	*/**	1/2d Newspaper SG 149/CP B2a in a large Block of 56 - 4x lightly hinged, the rest Unhinged. Fine Block. CP Cat \$6580 (56)	1000
562	U	1d Deep Lilac & 2d Rose Watermark 'Large Star' SG 178/79 - CP C1d/C2c Fine Used. Scarce CP Cat \$1100 (2) PHOTO-PLATE 4	500
563	*	2/- Rose & 5/- Grey Mint - the 2/- has minor surface rubbing, otherwise Good Mint. ACS Cat \$2200 (2) PHOTO-PLATE 8	1000
564	*	2d Rose SG 179/CP C2c Large Star Wmk Mint with gum. A little ageing. CP Cat \$2000 (1) PHOTO-PLATE 4	1000
565	U	6d Blue P12x11 1/2 SG 183/CP C5c in a Block of 4 Good used with 'Christchurch' 1878 & Obliterator 'C' cancels (4) PHOTO-PLATE 7	100

1882 SECOND SIDEFACES

566	*	1/2d Black P10 OPSO SG 03/CP DP1b Mint with part gum. Centred to top (1) PHOTO-PLATE 4	500
567	*	1/2d to 1/- Simplified Set Good Mint ACS Cat \$800 (10) PHOTO-PLATE 8	400
568	*	1d Rose P10 OPSO SG 06/CP DP2j Mint with gum. Minor gum creasing (1) PHOTO-PLATE 4	500
569	P	2 1/2d Red Imperf Plate Proof Block of 4 on watermarked paper. Fine (4) PHOTO-PLATE 7	200
570	*	2d Lilac OPSO SG 09 in a Block of 4 lightly hinged at top with a light horizontal crease on the bottom stamp. Fine Multiple with certificate (4) PHOTO-PLATE 7	1500

1893 ADVERTISEMENT STAMPS

571	U	1d 1st Setting x1, 1d 2nd/3rd Setting x 14 & 2d Strip of 3 2nd/3rd Setting All on Stockcards (16 items)	50
572	U	1d Rose P12x11 1/2 CP DA2e (6) 3rd Setting in Red PAIR (No Chapped Hands with Sunlight Soap/Lace of all kinds washed by Sunlight Soap) Adverts. Fine Advert Item (2) PHOTO-PLATE 4	200
573	U	1d Rose P12x11 1/2 CP DA2e(6) Vertical Pair 3rd Setting in Brown Red (For Bronchitis Take Bonnington's Irish Moss/Ladies Use Sunlight Soap For Washing the Hair) The Advert showing 'doubling' Interesting Advert Variety Pair (2) PHOTO-PLATE 7	350
574	U	2 1/2d Blue P10 OPSO CP DP4e with 'Dodgshun's' 3rd Setting Advert in mauve. Very Good used. Very Scarce. CP Cat \$2500 (1) PHOTO-PLATE 4	1250
575	U	2 1/2d Ultramarine P10 OPSO in violet with Advert 2nd Setting in Green (If You Use/Sunlight Soap/You're Right) SG 012ba/CP DP4e Used with part 1894 Wellington cds. Has RPS NZ 2017 Certificate. CP Cat \$2500+ (1) PHOTO-PLATE 4	1250
576	U	5d Grey Mixed Perfs P10 and 12 1/2 with 3rd Setting (For Hosiery & Gloves/Go or send to/W.Strange & Co., ChCh.) Advert in Red-Brown CP DA7d(z) Unpriced in CP. (1) PHOTO-PLATE 4	750

1898 PICTORIAL OFFICIALS

577	**	1/- Kea/Kaka SG 065 Top Marginal Block of 6 Unhinged. Has light gum creasing on the back. Good Appearance. ACS Cat \$4800 (6) PHOTO-PLATE 11	1500
578	U	5/- Mt Cook Upright Watermark SG 067a/CP E021f Very Good Used postmarked 'Dunedin 10 AP 12' cds CP Cat \$2500 (1) PHOTO-PLATE 4	1000

1898 PICTORIALS

579	U	2 1/2d Wakitipu SG 249 x 30 Very Fine Used/CTO STC \$2250 (30)	250
580	U	2/- Milford Sound - 1x No Watermark & 16x P14 Watermarked Very Good to Fine Used. STC \$1100 (17)	100
581	**	6d Deep Green P11 SG 264/CP E14b(1) in a Marginal Block of 6 Unhinged. Centred to top. CP Cat \$4500 (6) PHOTO-PLATE 7	2000
582	P	6d Green Kiwi Imperf Plate Proof Pair on Unwatermarked Paper in issued colour. Fine Bird Thematic item (2) PHOTO-PLATE 4	125
583	**	9d Terraces P14 SG 326 Unhinged, 1/- Kea/Kaka P11 No Wmk SG 268 Unhinged, 5/- Mt Cook P14 Upright Wmk SG 329a Unhinged; 1900 4d P14x13, 13 1/2 SG 379 Unhinged, 6d Red Kiwi P11 No Wmk Unhinged; 1907 6d Red kiwi P14 Unhinged. CP Cat \$4000 (6) PHOTO-PLATE 4	1250

1900 PICTORIAL OFFICIALS

584	U	1/2d Mt Cook OPSO SG 025a/CP FP4b dated 1905 Very Good Used. Has a minor corner crease. Very Scarce. CP Cat \$2000 (1) PHOTO-PLATE 4	1000
585	**	1/2d Mt Cook OPSO SG FP3b in a Top Marginal Block of 6 Unhinged with much perf staining (6) PHOTO-PLATE 11	300
586	U	6d Red Kiwi CP E014g(x) Nice used with 'OFFICIAL' Offset Overprint on reverse. Has RPSNZ 2012 Certificate. Very Scarce. CP Cat \$5000 (1) PHOTO-PLATE 4	2500

1900 PICTORIALS

587	*	1 1/2d Boer War SG 275/CP E4a(1) Khaki shade Mint No Gum with RPS NZ Certificate 1980. Very Scarce. CP Cat \$6000 for Mint (1) PHOTO-PLATE 4	1500
588	*/**	1/2d Green Mt Cook CP F5d(z) in a Block of 4 showing the two different comb heads. The upper stamps have double perforations and some perf separation and reinforcement vertically. Fine Variety Block. CP Cat \$3000+ (4) PHOTO-PLATE 7	1500
589	*/**	1/2d Green Mt Cook SG F5d(z) in a Mint Vertical Block of 6 showing the two different comb heads, the central stamps doubly perforated. The top 2 stamps hinged, the others unhinged. The central stamps show some perf separation vertically. Has RPS NZ 2017 Certificate. Fine Variety Block. CP Cat \$5500+ (6) PHOTO-PLATE 11	2500
590	*	6d Red Kiwi P11 SG 265cb/CP E14e(v) Imperf between Vertical pair. Good Mint. odd bluntish perf. SG Cat £1600/CP Cat \$3200 (2) PHOTO-PLATE 7	1600
591	U	6d Red Kiwi Watermark Upright Abnormal Watermark SG 312ab/CP E14f Fine Used. Centred to top. Very Scarce. SG Cat £2000/CP Cat \$5500 (1) PHOTO-PLATE 4	2500

1901 1D UNIVERSAL

592	**	Booklet 1907 Official 10/- CP W02a Complete with 20x Panes. Minor staining to the cover otherwise fine. Very Scarce CP Cat \$2000 (1)	1000
593	*	Official CP GP5a 'OPSO' with violet overprint Nice Mint (1) PHOTO-PLATE 4	500
594	C	Plain FDC tied by Waihao Downs cds. Unaddressed. ACS Cat \$300 (1)	200
595	C	Printed 'First Day Of Issue' Cover on Lyttelton Times Co envelope Posted at Christchurch. Nice Cover (1) PHOTO-PLATE 17	300
596	**	Redrawn SG 386 in a Block of 9 Unhinged with light perf staining. ACS Cat \$1800 (9)	90
597	*	Waterlow P14 SG 352ba/CP G9a (Y) Imperf Vertically Nice Mint CP Cat \$750 (2) PHOTO-PLATE 4	400

1906 CHRISTCHURCH EXHIBITION

598	*	1/2d to 6d Set Good Mint ACS Cat \$700 (4)	150
599	U	6d Annexation SG 373 Fine Used ACS Cat \$600 (1)	300

1907 PICTORIALS

600	*	3d to 1/- Set plus 1d Universal Redrawn Good Mint. Mixed Centreing. ACS Cat \$700 (4)	350
-----	---	---	-----

1909 1D DOMINION

601	*/**	Cowan Imperf Block of 4 SG 410a/CP J6a(y) lightly hinged on the top pair. CP Cat \$600 (4)	250
602	*/**	Cowan Imperf Marginal Block of 4 SG 410a/CP J6a(y). The block is lightly hinged at top CP Cat \$600 (4)	200

1909 KING EDWARD VII

603	**	3d Brown 2 Perf Pair SG 401a/CP H3e Marginal Fine Unhinged CP Cat \$1750 (1 Pair) PHOTO-PLATE 7	1250
604	**	8d Indigo-Blue Two Perf Pair SG 404a/CP H7d(1) in a Block of 4 Unhinged CP Cat \$1000 (2 Pairs)	100

1913 AUCKLAND EXHIBITION

605	**	1/2d Green SG 412 in a Top Marginal Block of 8 Unhinged. ACS Cat \$640 (8)	300
-----	----	--	-----

1915 KGV RECESS

606	**	2 1/2d Deep Blue 2 Perf Pair SG 419b/CP K3c(1) in a Marginal Block of 4 Unhinged. CP Cat \$950 (2 Pairs)	100
607	**	2d Yellow 2 Perf Pair SG 418b/CP K2f in a Block of 4 Unhinged. CP Cat \$500 (2 Pairs)	100

1915 KGV RECESS OFFICIALS

608	U	3d Brown SG 0100d/CP K04a(z) with 'Double Print' Fine used. Rare with RPSNZ 2016 Certificate CP Cat \$3000 (1) PHOTO-PLATE 4	1250
-----	---	--	------

1915 KGV SURFACE OFFICIALS

609	*	1 1/2d Orange-brown DLR SG 091 with 'Specimen' diagonal overprint. Good Mint. Scarce (1) PHOTO-PLATE 4	125
-----	---	--	-----

1920 VICTORY

610	P	1/2d to 1/- Set in Imperf Plate Proof Blocks of 4. Lightly hinged at top. Minor gum staining (24) PHOTO-PLATE 9	600
611	P	3d Lion SG 456 in a Marginal Plate Proof Block of 12 in issued colour. Fine Unhinged (12)	500

1925 DUNEDIN EXHIBITION

612	**	1d Carmine Exhibition SG 464 in a Complete Sheet of 60 Unhinged with light gum toning. The sheet include varieties CP S17b (y) & (x). Good for a Specialist Collector (60)	300
613	U	4d Mauve SG 465 postmarked 'Dunedin Exhibition 1 MY 26' Nice Used ACS Cat \$150 (1)	75

1926 ADMIRALS

614	*/**	3/- Admiral Cowan SG 470 in a Block of 4 lightly hinged at top. Fine condition. ACS Cat \$1700 (4) PHOTO-PLATE 9	850
-----	------	--	-----

1931-4 AIRMAILS

615	C	7d Trans-Tasman SG 554 Faith in Australia Printed FDC signed by Pilots Ulm, Allan & Boulton. Fine & Scarce (1) PHOTO-PLATE 17	500
616	P	Unadopted Essay Imperf 5d with Plane/Lake/Mountains in Carmine on thick card Fine item (1) PHOTO-PLATE 4	200

1935 PICTORIAL OFFICIALS

617	**	1/2d to 2/- Simplified Set Fine Unhinged ACS Cat \$1000 (13)	450
618	**	2/- Captain Cook SG 0132c/CP L013f(z) 'COQK' flaw in a Top Marginal Block of 4 Unhinged. CP Cat \$800 (4)	400
619	**	2d Whare SG 0123c/CP L04c in a Bottom Marginal Block of 8 Unhinged. CP Cat \$800 (8)	400
620	**	4d Mitre Peak SG 0126c/CP L07e in a Partial Plate 2A Bottom Marginal Block of 12 Unhinged. Faint gum staining on the base. CP Cat \$440 (12)	200

621	**	9d Black Overprint SG 0130 in a Block of 4 Unhinged ACS Cat \$480 (4)	200
622	**	9d Green Official SG 0129/CP L011c in a Block of 9 Unhinged - 4x nice examples, 5x with minor perf staining. ACS Cat \$4050 (9)	1000

1935 PICTORIALS

623	C	1/- Tui on Printed FDC (Skiing/Mt Ruapehu illustration) endorsed 'Express Delivery' Posted at Wellington to Dunedin. Has Orange 'Express' label together with blue lines. Interesting item (1) PHOTO-PLATE 14	250
624	**	2/- Captain Cook P12 1/2 SG 589d/CP L13e(2) in a Marginal Block of 4 Unhinged. Has a light gum tone on 1 stamp. CP Cat \$600 (4)	250
625	*/**	2/- Captain Cook P13-14x13 1/2 SG 569/CP L13a in a Plate 1 Block of 4 - lightly hinged at top. CP Cat \$1600 (4)	650
626	**	2d Whare CP L4f(x) Coil Pair No 7 with an extra stamp at left Unhinged. Very Scarce. CP Cat \$3000 (3) PHOTO-PLATE 4	1500
627	*/**	3/- Mt Egmont CP L14d(z) Watermark Inverted with Plate 1 Block of 4 (no left side selvage) Lightly hinged at top. Has light red indellible ink marks on the top 2 stamps. STC \$1440 as singles. Plate Block \$2500? (4) PHOTO-PLATE 9	400
628	*/**	3/- Mt Egmont P14-13x13 1/2 SG 569/CP L13a in a Plate 1 Block of 4 lightly hinged at top. CP Cat \$2000 (1)	750
629	**	5d Swordfish CP L8f(z) Coil Pair No 13 Unhinged with the usual perf trimming. Very Scarce. CP Cat \$4000 (2) PHOTO-PLATE 4	2000
630	**	9d Red/Black single watermark SG 630/CP L11d in a Corner Sheet No 'WT/U 479693' Fine Unhinged. Nice positional item CP Cat \$300+ (1) PHOTO-PLATE 7	250
631	**	Booklets 1936 2/- Parisian Advert Booklet Complete SG SB16/CP W5b Fine with a minor staple impression on the front cover. SG Cat £250/CP Cat \$500. Scarce (1)	350

1935 SILVER JUBILEE

632	**	1/2d to 6d Set in Corner Blocks of 12 Unhinged. 1x 6d with a light gum age. ACS Cat \$624 (36)	250
633	C	2x Sets on Plain FDC's Posted at Dunedin North. Fine. ACS Cat \$800 (2)	100

1936 CHAMBER OF COMMERCE

634	C	Illustrated FDC's with full sets - Jones C36.2A,C36.2L,C36.2V Fine ACS Cat \$225 (3)	75
-----	---	--	----

1938 KGV

635	U	2d on 1 1/2d Provisional SG 629a/CP M5a(z) Reinserted '2' variety Fine Used single. CP Cat \$750 (1) PHOTO-PLATE 4	500
636	**	2d/1 1/2d Provisional SG 629a/CP M5a(z) Re-inserted '2' in a Block of 4 - one of the normal stamps have a light tone. CP Cat \$1250 (4) PHOTO-PLATE 9	450
637	P	3d Blue Plate Proof Block of 4 Unhinged. Fine (4) PHOTO-PLATE 9	250
638	**	Booklet 1938 KGV 2/3 Complete SG SB19/CP W6c Fine SG Cat £400/CP Cat \$625 (1)	400

1940 CENTENNIAL

639	C	1944 10d King Edward VIII FDC's - 1x Jones C44.1A, 1 on V For Victory Cover, 1x Plain FDC with 'First Day Cover' violet cachet. ACS Cat \$225 (3)	75
-----	---	---	----

1946 PEACE

640	**	5d Navy 'Blurred Centre' variety CP S45a (y) Unhinged CP Cat \$400 (1) PHOTO-PLATE 4	250
-----	----	--	-----

1953-9 QUEEN ELIZABETH

641	**	1953 3d Coronation CP S60a(z) Bottom Marginal Strip of 5 with 'Joined Paper' variety Unhinged. Very Scarce (5) PHOTO-PLATE 10	400
-----	----	---	-----

642	P	1955 1d Orange Large Figures Imperf Bottom Corner Marginal Proof Block of 4 Unhinged. Fine Item (4) PHOTO-PLATE 10	300
643	*/**	1958 2d Stars Error SG 763b in a Block of 4 hinged on the top 2 stamps. ACS Cat \$1000 (4) PHOTO-PLATE 9	500
644	*/U	1958 2d Stars Forgeries - Single Used, Pair Used and a 5d Overprint Forgery Unhinged. Interesting Lot (4) PHOTO-PLATE 4	250
645	*/**	1959 8d Salt Industry CP S83a(z) in a Vertical Strip of 3 with 'Double Paper' variety on the first stamp. CP Cat \$450 (3) PHOTO-PLATE 11	300
<u>1960-6 PICTORIALS</u>			
646	**	1/9 Multi in a Marginal Block of 4 with a Striking Green Doctor Blade Vertical flaw on the 2 left-hand stamps Unhinged. Fine (4) PHOTO-PLATE 10	250
647	**	1960 5d Daisy CP 07a(z) Corner Value Block (2x3) with the top two stamps 'Yellow colour omitted' variety unhinged. The opposite of the variety block 07a(Za) - the top right corner block of the sheet. The bottom 4 stamps all with the 'Misplaced Yellow' varieties. Fine Positional Variety Block. (6) PHOTO-PLATE 11	2500
648	**	1962 3d Telegraph CP S88a(z) Brown Colour Partially Omitted on the bottom stamp in a Vertical Strip of 5 Unhinged (5)	150
649	**	1962 8d Telegraph SG 811b/CP S89a(z) Grey-Black Colour Omitted Fine & Rare CP Cat \$3500 (1) PHOTO-FRONT COVER	3000
650	**	1963 3d Railway Centenary CP S90a(y) Imperf Pair unhinged. CP Cat \$3000 (2) PHOTO-PLATE 5	1500
651	*	1965 2/- Parliamentary Conference SG 837a/CP S102a(z) Red Colour Omitted Fine Mint with a normal for comparison. Very Scarce. CP Cat \$4000 (2) PHOTO-PLATE 4	2000
652	U	2/- Taniwha Vertical Pair with 'Misplaced Design' Error showing part of the Plate Imprint on the white selvage at left tied with 8d value on part piece. Interesting item (3) PHOTO-PLATE 10	150
653	**	3d Kowhai CP 05a(y) Brown Colour Omitted - a Vertical Strip of 6 with Partial Missing Brown on the 2nd stamp, Missing totally on the 3rd, 4th & 5th stamps unhinged. Fine Positional Strip (6)	750
654	**	4d Puarangi SG 786a/CP 06a(y) Buff Colour Omitted - Vertical Pair with the first stamp normal and the bottom stamp with the buff colour omitted. Fine item. CP Cat \$1600+ (2) PHOTO-PLATE 10	1250
655	**	4d Puarangi SG 786d/CP 06b Chalky Paper in a Plate Block 2333 of 8 Unhinged but with minor perf staining on 3 values. Rare Plate Block. CP Cat \$25,000 (8) PHOTO-PLATE 10	7500
656	**	4d Puarangi SG 786d/CP 06b Chalky Paper Unhinged CP Cat \$2000 (1) PHOTO-PLATE 4	1250
657	**	9d Flag CP 011a in Top Marginal Block of 6 with Partial Double Perforations on the top 3 stamps. The block lightly hinged on the selvage (6)	250
<u>1967-9 PICTORIALS</u>			
658	**	1967 2 1/2c Kowhai CP OD4a(x) Top Left Corner Marginal Block of 4 with Double Perforations Error Horizontally & Vertically. Fine item CP Cat \$400 (4) PHOTO-PLATE 11	250
659	*	1967 3c Puarangi Imperforate Top Marginal Pair lightly hinged at top (2) PHOTO-PLATE 10	250
660	C	1967 Decimals Set to \$2 Illustrated FDC's 2x Cream D67.1B & D67.1D(b) plus Plain Registered FDC with Director-General reg label. ACS Cat \$300 (4)	75
661	**	1968 \$2 Multi Plate Imprint Block of 10 Fine Unhinged CP Cat \$1000 (10)	400
662	**	1969 3c Law Society CP S115a(z) Double Print Marginal single Fine variety CP Cat \$700 (1) PHOTO-PLATE 5	500
<u>1970 DEFINITIVES</u>			
663	**	10c Royal SG 1017c/CP P12b(y) Bottom Marginal Vertical Strip of 3 - the bottom stamp Missing Deep Blue Colour Omitted. Fine Positional Strip Unhinged (3) PHOTO-PLATE 11	600

664	**	15c Maori Hook (No Wmk) Bottom Corner Marginal Colour Tab Block of 12 Unhinged with the left-hand stamps with a Vertical Striking Brown Doctor Blade flaw unh (12)	250
665	**	18c Maori Club (No Wmk) SG 1019a/CP P14b(x) Black Colour Omitted Unhinged CP Cat \$1200 (1) PHOTO-PLATE 5	800
666	P	1971 One Ton Cup James Berry 1x Pencil Drawing & 4 Coloured Drawings on thick card (208x150mm) - the pencil drawing is similar to the 5c issued stamp. The coloured drawings are all unaccepted designs. Interesting designs by James Berry (5)	4000
667	**	1c Butterfly (No Wmk) CP P2c(T) with a Marginal Block of 15 with Black Colour Shift Unhinged CP Cat \$3750 (15)	1000
668	**	1c Butterfly (No Wmk) CP P2c(z) Black colour offset on the back Unhinged CP Cat \$425 (1) PHOTO-PLATE 5	250
669	**	1c Butterfly No Watermark CP P2c(y) Blue Colour Omitted Unhinged CP Cat \$350 (1) PHOTO-PLATE 5	175
670	**	4c Moth CP P6a(y) Complete (5 Colours) Offset Strip of 3 with full offset on the 1st stamp and partially on the 2nd stamp. Fine Variety Unhinged. CP Cat \$3000 for a complete offset (3) PHOTO-PLATE 5	2500
671	**	4c/2 1/2c Moth London Letterpress CP P30b(v) Corner Block of 4 with 'Surcharge Offset' complete on 2 stamps and partial on another unh CP Cat \$750+ (4) PHOTO-PLATE 10	375
672	**	4c/2 1/2c Moth London Letterpress CP P30b(w) Surcharge double in Bottom Marginal Block of 4 Unhinged CP Cat \$2400 (4) PHOTO-PLATE 10	1200
673	**	5c Fish (No Wmk) in Bottom Corner Block of 6 - the first two left stamps show a Red Colour Smudge towards the base of the stamp. (6) PHOTO-PLATE 10	200
674	**	6c Seahorse CP P8a(z) in Top Marginal Vertical Pair with the top stamp with a Olive Colour Offset unh (2) PHOTO-PLATE 10	300
675	**	8c John Dory SG SG 1015a/CP P11b(x) Blue-Green Colour Omitted unh CP Cat \$900 (1) PHOTO-PLATE 5	500
<u>1972-5 COMMEMORATIVES</u>			
676	**	1972 23c Lake Scene CP SS8a(2) 'Olive Frame' variety Unhinged together with a normal stamp. CP Cat \$1000 (2) PHOTO-PLATE 5	500
677	**	1973 4c Steam Locomotive CP S170a(z) Plate Imprint Block of 8 with Black Colour Doubled Unhinged CP Cat \$800+ (8) PHOTO-PLATE 12	500
<u>1975-9 PICTORIALS</u>			
678	**	1975 8c Rose CP PA8b(y) Imperf Marginal Pair Unhinged CP Cat \$500 (2) PHOTO-PLATE 5	300
679	**	1977 Silver Jubilee Min Sheet CP SM220-4(x) with the red Colour Omitted Unhinged CP Cat \$1000 (1)	500
680	**	1977 Silver Jubilee Min Sheet SG MS 1137b/CP SM220-4 Silver Colour Omitted Fine Unhinged. Very Scarce CP Cat \$3000 (1) PHOTO-PLATE 13	2000
681	**	1979 \$1 Scallop Shell CP PA19a(y) in a Top Marginal Block of 6 with the middle pair with 'Partial Imperforate' on the top and sides variety unh. CP Cat \$850 (6)	500
682	**	1979 10c Queen P14 1/4 x 14 1/2 CP PA10b (T) Orange Colour Omitted in a Block of 4 Unhinged CP Cat \$2700 (4) PHOTO-PLATE 10	1000
<u>1980-89</u>			
683	**	1980 14c Queen SG 1210ab/CP SP260-262(z) Strip of 3 with Black Colour Omitted. Fine Unhinged CP Cat \$1000 (3) PHOTO-PLATE 5	750
684	P	1980 25c Large Harbour 2x Different Fournier Colour Proofs on thin paper. One Proof in Black & Yellow and the other in Gold & Crimson. Fine & Interesting pieces (2)	500
685	**	1980 25c Te Hau Maori Portrait CP PA26a (z) with Yellow colour offset on the back and the black colour face outline. Marginal Strip of 3 Unhinged. CP Cat \$1125 (3) PHOTO-PLATE 5	450
686	**	1982 24c Map Plate 117 Block of 6 Fine Unhinged CP Cat \$800 (6)	500

1990-99

687	C	1990 (10SP) 13th World Orchid Conference Cover signed by Dennis Bonham (Chairman), Andy Easton (Chief Judge) and Lindy Fisher (Designer of the Stamps). (1)	250
688	**	1990 Orchid Min Sheet SG MS1547 with Misplaced Perforations and guillotining resulting in a 3mm shift with a normal sheet for comparison. Fine Thematic Item (2)	300
689	**	1991 40c Chatham Islands Discovery Bicentenary CP S421a(z) in a Marginal Block of 8 with 'Double Perforations' Error Unhinged. CP Cat \$900 (8)	400
690	**	1994 Philakorea \$2.60 Bird Min Sheet SG MS1830. A much darker printing sheet with a normal sheet for compariosn. Striking (2)	100
691	**	1998 \$1.80 Peter McIntyre Painting SG 2177 in a Marginal Block of 4 with 'doubling of the black and silver writing' Unlisted (4)	100

2000 ONWARDS

692	**	2004 NZM \$4.50 KiwiCall prepaid Phonecards Booklet (NZM 11/04 0486) Complete with Grossly Misplaced printing and Die Cut Faults. Nice Variety Booklet (1)	250
693	**/C	2007 Huttpep Sheet of each value unhinged. signed in the selvages by the designer, committee and judges plus Pair FDC (102)	50

ANTARCTICA

694	**	1910 Victoria land 1/2d Green & 1d Red SG A2/3 in Blocks of 4 Unhinged. ACS Cat \$10,600. Has Odenweller Certificate for the 1/2d Block Very Scarce (8) PHOTO-FRONT COVER	5500
-----	----	---	------

CHRISTMAS

695	**	1960 2d Nativity CP SC1a(3) Pale Brown & Red shade affecting 4 middle stamps in a Top Marginal Block of 8 Unhinged. Fine Block (8)	250
696	**	1960 2d Nativity CP SC1a(x) Top Marginal Value Block of 4 with Partial Double Perforations vertically on the top 2 stamps. Also an extra comb strike in the top selvedge on the right unhinged. CP Cat \$400+ (4)	300
697	**	1960 2d Nativity SG 805a/CP SC1a(z) Top Marginal Corner horizontal Strip of 3 - Mssing Red on the first stamp and nearly complete on the 2nd stamp. The third stamp normal. Fine positional strip Fine Unhinged. CP Cat \$900 for an error stamp (3)	1500
698	**	1960 2d Navitivity SG 805a/CP SC1a(z) Red Colour Omitted Unhinged. Fine item. CP Cat \$900 (1)	750
699	**	1961 2 1/2d Adoration single with a colour shift affecting the middle of the stamp unhinged (1) PHOTO-PLATE 5	100
700	**	1963 2 1/2d Holy Family CP SC4a (y) Yellow Colour largely Omitted affecting the middle stamps of a Bottom Marginal Block of 6 Fine Unhinged. Fine Positional Block (6)	1000
701	**	1963 2 1/2d Holy Family in a Plate Imprint Block of 6 showing largely Missing Orange Colour on the first 2 stamps of the block Unhinged. Unpriced in CP (6)	600
702	*/**	1963 2 1/2d Holy Family Marginal Part Plate Block of 4 with 'Orange Colour Shift downwards. Lightly hinged on the top 2 stamps (4) PHOTO-PLATE 11	250
703	*	1963 2 1/2d Holy Family SG 817a/CP SC4a(z) Imperf Pair Fine Mint CP Cat \$800 (2) PHOTO-PLATE 5	500
704	**	1964 First Christian Service Pair right hand marginal with Partial Missing Yellow on the 2nd stamp Unhinged (2) PHOTO-PLATE 5	300
705	**	1965 3d The Two Trinities CP SC6a(w) in a Right-Hand Bottom Colour Tablet Vertical Block of 8 with Double Perforations on the right hand stamps both Vertically & Horizontally Unhinged. Faint tone on 1 stamp. Fine Item (8) PHOTO-PLATE 13	750
706	**	1965 3d The Two Trinities CP SC6a(z) Yellow Colour Omitted affecting the first 2 stamps in a Block of 4 Unhinged. Fine & Scarce CP Cat \$2000+ (4) PHOTO-PLATE 12	1500
707	**	1965 3d The Two Trinities in a Vertical Pair with Missing Pink Colour Unhinged. Unpriced in CP (2) PHOTO-PLATE 12	1500

708	**	1966 3d Virgin with Child CP SC7a(z) Double Perforations affecting the bottom row of a Right-Hand Plate Block of 12 Unhinged. Faint toning on the right selvage. CP Cat \$2250 (12)	1000
709	**	1968 2 1/2c Adoration in Plate Imprint 1B Bottom Sheet Block of 10 showing Partial Double Perforation on the last 2 stamps Fine Unhinged CP Cat \$600 (10) PHOTO-PLATE 13	400
710	**	1970 3c Window Plate 1B Corner Block of 6 with Olive Colour Shift to the right Fine Unhinged. (6)	500
711	**	1970 3c Window SG 944a/CP SC11b(z) in a Top Value Corner Missing with "Missing Olive Colour Omitted" Fine Unhinged CP Cat \$1000 (2)	750

CINDERELLAS

712	*	1914 1/2d Auckland Provincial Fund Type 1 Heslop J17 with 'Double Print' with a thin (1) PHOTO-PLATE 5	100
713	*	1914/18 ANZAC WW1 label No 24 'Self Last' Coloured label with Monument & Flags. Mint No Gum. Unlisted (1)	200
714	C	1921 (14FE) Registered Cover bearing KEVII 5d tied by Stafford cds to Hokitika. On the back has 'Chamberlain's Cough Remedy ... CJE Linnemann, Storekeeper, Stafford' Black/White Cinderella tied by blue registration lines. Fine item (1) PHOTO-PLATE 18	300
715	*	1927 NZ Railway Level Crossing Safety label - 'STOP - Safety First' Cinderella label with part gum and perf staining. Unlisted in Heslop. (also information photocopies page from January 1927 NZ Railway magazine re the Safety campaign) (1)	600
716	**	1940's 'Sunny Napier' Patriotic Fund Set of 4 labels in a Complete Sheet of 6 Strips. Fine & Rare (24)	2000
717	C	1945 (28JA) Printed 'Q.E.D.' Forwarding Company/Customs and Shipping Agents/Christchurch' green cover bearing 'Churchill' Blue/Red/White Triangular label. Unlisted in Heslop. The label is tied with 1d Green KGV stamp tied by Christchurch machine cancel. Minor soiling. WW2 Patriotic Cover (1) PHOTO-PLATE 18	500

EXPRESS DELIVERY

718	**	1939 6d Car SG E6 in a Complete Sheet of 60 Unhinged. Sheet No 2565028. ACS Cat \$600 (60)	150
-----	----	--	-----

HEALTH

719	**	1930 Nurse SG 545 in Top Marginal Corner Block of 4 Fine Unhinged ACS Cat \$480 (4)	250
720	C	1931 Red & Blue Boys SG 546/47 First Day Cover Posted at Christchurch. Minor staining. Rare FDC. ACS Cat \$5000 (1) PHOTO-PLATE 18	3750
721	*/**	1931 Red & Blue Boys SG 546/47 in Blocks of 4 - the top 2 stamps lightly hinged on the top. The bottom stamps unhinged. ACS Cat \$2980 (8) PHOTO-PLATE 12	1500
722	**	1931 Red & Blue Boys SG 546/47 in Blocks of 4 Unhinged. The 1d Block has one stamp with a light perf tone. ACS Cat \$4200 (8) PHOTO-PLATE 12	2000
723	**	1932 Hygeia SG 552 in a Block of 4 Fine Unhinged ACS Cat \$480 (4)	250
724	C	1935/39 Illustrated FDC's - 1935 (Jones H35.1AA, 1936 (Jones H36.1C (2), H36.1BA (2), H36.1FA; 1937 (Jones H37.1A(v), H37.1BB, H37.1C), 1938 (Jones H38.1EA(1), H38.1K(b), H38.1M), 1939 (Jones H39.1CA(v), H39.1DA & 1x Plain FDC (14)	200
725	C	1935/43 Illustrated FDC's - 1935 (Jones H35.1AA), 1936 (Jones H36.1C), 1937 (Jones H37.1C), 1938 (Jones H38.1K(2), H38.1M), 1939 (Jones H39.1DA plus Plain FDC with 'First Day/Of Issue' black cachet), 1940 Plain FDC, 1941 (Jones H41.1A Pair on 1x Cover & 2x single FDC's), 1943 (Jones H43.1A 2x Set of single FDC's) STC \$500 (15)	75
726	C	1937 Illustrated FDC Jones H37.1AG Rate 10 with light staining (1)	200
727	C	1959 Health Min Sheet Pair on Printed Jason Covers Posted at Te Aro. Minor ageing (2)	50
728	C	1959 Health Min Sheet Pair on Registered Jason Printed Covers cancelled at Otaki Health Camp & 1961 Health Min Sheet Pair tied on Plain Health FDC's. Fine lot (4)	125
729	**	1964 2 1/2d Tarapunga (Bird) CP T36a(x) in a Strip of 4 with a Red Colour Shift downwards Unhinged (4)	150

730	**	1964 2 1/2d Tarapunga CP T36a(x) with Major Red Colour Shift Fine Unhinged (1) PHOTO-PLATE 5	100
731	**	1984 Horses Pair CP T56 a/b (w) orange Colour Doubled Unhinged in a Block of 4 (ie 2 Pairs) CP Cat \$250 (2 Pairs)	150
732	**	1996 40c Teddy Bear Self Adhesive SG 2003a Fine CP Cat \$4500 (1) PHOTO-PLATE 5	1500

LIFE INSURANCE

733	*	1891/98 1/- Rose SG L6/CP X6a Mint with a heavier hinge. Has faint perf staining otherwise with good colour and appearance. CP Cat \$2000 (1) PHOTO-PLATE 5	750
734	*	1891/98 3d Deep Brown SG L4/CP X4a Mint with most original gum and a minor gum crease. Very Scarce. CP Cat \$1500 (1) PHOTO-PLATE 5	750
735	*	1891/98 6d Deep Green SG L5/CP X5a Mint hinged twice. Centred left. CP Cat \$1250 (1) PHOTO-PLATE 5	500
736	U	1905 No VR Set Simplified Very Good Used ACS Cat \$500 (11)	250
737	U	1905/06 2d Chestnut No VR SG L21/CP X10a Fine Used CP Cat \$425 (1) PHOTO-PLATE 5	250
738	U	1905/06 2d Chestnut No VR SG L21/CP X10a Pair Fine Used CP Cat \$850 (2) PHOTO-PLATE 5	500
739	P	1947 Bradbury Wilkinson Imperf Plate Proofs - 3d x3 Blocks (2 different papers), 4d, 6d & 1/- All in Blocks of 4 Fine Unhinged (6 Blocks)	600
740	U	1967 10c/1/- Cape Brett SG L55aw/CP X26c(z) Watermark Sideways Inverted Nice Used SG cat £475/ CP Cat \$1000 (1) PHOTO-PLATE 6	500
741	**	1967 2c/2 1/2d Cape Cambell CP X23a(y) Double Surcharge variety unhinged (1) PHOTO-PLATE 5	500
742	U	1967 3c/4d Stephens Island SG L53w/CP X24a(z) Watermark Sideways Inverted Very Good Used. Has a short corner at top right. CP \$1750 (1) PHOTO-PLATE 5	175

PERFINS

743	U	'DB & Co' (D. Benjamin & Co Dunedin) Large Letters Type on 1/2d 2nd Sideface. Scarce (1) PHOTO-PLATE 8	50
-----	---	--	----

POSTAGE DUES

744	U	1899 6d Green/Red SG D7 with a light 'Double Red' 6d Value Overprint. Very Good Used. Unprice. Nice Postage Due variety (1) PHOTO-PLATE 6	500
-----	---	---	-----

POSTAL FISCALS

745	P	1880 QV 3/- Purple Plate Proof pair on thick Card. Scarce (2) PHOTO-PLATE 6	300
746	U	1882 QV £3 Green Fine Used with Postal Type cds ACS Cat \$300 (1) PHOTO-PLATE 6	200
747	U	1882 QV 9/- Orange NZ Watermark SG F18 Fine Used with Postal Type cds. Minor blunt perfs ACS Cat \$300 (1) PHOTO-PLATE 6	150
748	U	1886 QV £3 Green P12 1/2 Very Good Used with 'Christchurch 23 JE 91' Postal Type cds. ACS Cat \$300 (1) PHOTO-PLATE 6	150
749	*	1895 QV 7/6 Grey P11 SG F63/CP Z9c Mint with slight gum disturbance. Has minor short perf at bottom right. CP Cat \$2500 (1) PHOTO-PLATE 6	1250
750	*	1903 QV 8/- Deep Blue SG F74 Mint Hinged. Scarce ACS Cat \$800 (1)	200
751	*	1906 QV £1 Pink SG F89 Good Mint. Has a plate flaw between the top letters 'N & E'. ACS Cat \$900 (1)	300
752	U	1913 QV £3 Green plus 1898 2/- Milford & 5/- Mt Cook & KEVII 1/- Orange all tied on piece by Dunedin cancels. Nice item (4) PHOTO-PLATE 6	500
753	*	1913/21 QV £2 Purple P14 1/2 x 14 Fine Mint & Very Scarce (1) PHOTO-PLATE 6	1000
754	*	1913/21 QV 7/- Pale Blue P14 1/2 x 14 SG F117/CP Z8j Good Mint CP Cat \$550 (1) PHOTO-PLATE 6	350

755	U	1915 QV £1 Pink P14 plus 1898 2/- Milford & KEVII 6d Red tied on piece by Dunedin cancels. (3) PHOTO-PLATE 6	250
756	U	1915 QV £2 Purple P14 plus 1898 5/- Mt Cook & KEVII 8d Blue all tied on piece by Dunedin cancels. Nice piece (3) PHOTO-PLATE 6	500
757	U	1915 QV £5 Blue P14 1/2 x 14 plus KEVII 6d & 1/- values tied by Dunedin 1915 cancels on piece (3) PHOTO-PLATE 6	250
758	U	1931/40 Arms £2.10s Red SG F163 Nice Used. ACS Cat \$1100 (1) PHOTO-PLATE 6	550
759	U	1931/40 Arms 12/6 Plum SG F156 Nice Used ACS Cat \$450 (1) PHOTO-PLATE 6	250
760	U	1931/58 Arms £10 Blue SG F168a Fine Used on piece tied by Auckland 23 DE 42 cds. Has RPS London Certificate. Rare stamp and not often seen (1) PHOTO-PLATE 6	1000
761	U	1931/58 Arms 12/6 Plum, 30/- Brown, £2 Purple, £3 Green & £4 Blue. Nice Used. ACS Cat \$1455 (5) PHOTO-PLATE 8	750
762	*	1931/58 Arms Forgery £5.10s Red Mint. Interesting item (1) PHOTO-PLATE 6	50
763	*	1939 Arms £9 on £9 Red Good Mint & Scarce (1) PHOTO-PLATE 6	500
764	U	1939 Arms 35/- on 35/- Orange-Yellow SG F156 Fine Used. ACS Cat \$750 (1) PHOTO-PLATE 6	375
765	*/**	1940/58 Arms £2.10s Red SG F207 in a Marginal Block of 4 - one stamp lightly hinged, the rest unhinged. Nice Block. CP Cat \$4500 (4) PHOTO-PLATE 12	2250
766	*/**	1940/58 Arms £4 Blue SG F207/CP Z50b in a Block of 4 - the top stamps lightly hinged at top, the bottom stamp unhinged. Fine Block. ACS Cat \$1700 (4)	850
767	**	1940/58 Arms £4 Blue SG F210/CP Z50b Unhinged ACS Cat \$550 (1) PHOTO-PLATE 6	300
768	U	1940/58 Arms £5 Indigo Blue SG F211w Fine Used ACS Cat \$250 (1) PHOTO-PLATE 6	150
769	**	1940/58 Arms 1/3 Yellow & Black 20x in Blocks incl 2x Sheet Number Blocks unh (20)	50
770	**	1940/58 Arms 22/- on 22/- Red Overprint SG F216/CP Z56b in a Block of 4 - 2x stamps lightly hinged, the others unhinged. ACS Cat \$2600 (4)	1250
771	*/**	1940/58 Arms 30/- Brown SG F205a/CP Z44d in a Marginal Block of 4 - one stamp lightly hinged, the other stamps unhinged. ACS Cat \$3600 (4) PHOTO-PLATE 12	1800
772	U	1940/58 Arms 30/- Brown SG F205w Watermark Inverted Very Good Used ACS Cat \$300 (1)	100
773	*/**	1940/58 Arms 7/6 Grey SG F198/CP Z36c in a Marginal Block of 4 - one stamp lightly hinged, the other unhinged. ACS Cat \$900 (4) PHOTO-PLATE 12	450
774	U	1996 QV £10 Blue P12 1/2 Fine Used postmarked 'Wellington 23 DE 87' coin cds. Centred to bottom. ACS Cat \$400 (1) PHOTO-PLATE 6	250
775	U	Official 1908 QV £1 Pink SG 072a Fine Used . ACs Cat \$1000 (1)	550
776	U	Officials 1908/09 QV £1 Pink SG 072a/CP Z015f - in a Strip of 5 tied by Wellington machine cancel on piece. Fine Multiple. CP Cat \$7500 (5)	2500

REVENUES

777	C	1868 Original Legal Probate Document (Will) bearing QV Imperf £3 tied by 'Otago 7 SP 68' cds plus 1890 updated with death certificates added. Interesting document (1)	150
778	*/**	Cash Discount Stamps 1930's 4d Ideal Gifts/Ideal Stamps in Vertical Strip of 3 & Vertical Block of 6 Mint with light staining (9) PHOTO-PLATE 12	200
779	C	Railway Charges 1920's Mail Tag from 'International Harvester Co of NZ' Palmerston North bearing 1/- Brown Railway Charge with 'Palmerston Nth' Station Overprint tied with Parcel cancel to Utiku (1) PHOTO-PLATE 7	200
780	C	Railway Charges 1929 (4FE) Mail Tag bearing 2/6 Grey & 6d Green Railway Charges both with 'Taumarunui' Station Overprints Upwards tied by 'New Zealand Railways/Taumarunui' Parcel Type cancel addressed to Auckland. Fine item (1) PHOTO-PLATE 7	200

781	U	Railway Newspaper 1896 1/2d Black P11 in a Marginal Block of 24 Unhinged. Very Scarce Multiple (24)	375
782	U	Railway Newspaper 1901 1/2d Black P14 Block of r with 'Balclutha' Station Overprint. The block has slight creasing. Cat \$600+ (4) PHOTO-PLATE 7	400
783	*	Railway Newspaper 1901 1/2d Grey-Black Kiwi RN1Eda Mint No Gum with 'WANGANUI' Station typed overprint (1) PHOTO-PLATE 6	125
784	U	Stamp Duty 1880 QV £600 Brown, £700 Maroon, £900 Yellow (torn and repatched) & £1000 Rose (with tear) Scarce All punched Cat \$1925 (4) PHOTO-PLATE 7	600
785	U	Stamp Duty 1880 QV £900 Orange-Yellow Kiwi #505 Perfined Scarce Cat \$800 (1) PHOTO-PLATE 7	600
786	U	Stamp Duty 1884 QV Gold High Value £1350 Kiwi R442 close margins unpunched Cat \$800 (1) PHOTO-PLATE 7	400
787	U	Stamp Duty 1931/58 Arms £2.10 Red, £3.10 Rose & £4.10 Grey (on piece) All Unpunched. Kiwi Cat \$290 (3) PHOTO-PLATE 6	150
788	U	Stamp Duty 1935 Arms £11,800 Kiwi R554A Punched Cat \$700 (1) PHOTO-PLATE 7	375

NEW ZEALAND POSTAL HISTORY

PRESTAMP ENTIRE/COVERS

789	C	1843 (DE25) Part Entire addressed to 'Thomas J Thompson, Port Nelson, NZ bearing 'New Plymouth' Crown-In-Oval handstamp. Rated '4' in black. The entire has been stuck down on card. Interesting (1)	500
790	C	1852 (22MR) Inwards Prestamp Cover Posted at London to New Plymouth with light 'New Plymouth Crown-In-Oval' black SE 16 1852 cancel. Rated '8' in red and '2' in black manuscript markings. Has Auckland transit cds. Also Ship-Letter/London cancel in red. Minor tear and ageing. (1)	250
791	C	1857 (JU15) Powell Correspondence Entire Sent from Wellington to Wanganui. rated '2' in Black with 'PETRE JU17 1857' arrival unframed cds. Usual filing crease (1)	150

FULL FACE QUEEN COVERS

792	C	1862 (19MR) Cover with 'Goldfield/B/Otago' (Weatherstone) datestamp on the back. On the front has 2d Blue Imperf FFQ SG 9 tied by a light Obliterator '18' cancel addressed to Dunedin. On the front also has the Dunedin 5 line MR 21 62 early cds and a large Manuscript '2' to pay the postage due. The Goldfield/B datestamp is the earliest known Goldfields cancel. ex Dumas. Very Rare (1) PHOTO-PLATE 18	1875
793	C	1863 (JY8) Mourning Cover bearing Imperf 2d Blue SG 36 Posted at Auckland addressed to Mr Robert Glapou, Mauku. Backstamped Auckland (1) PHOTO-PLATE 18	250
794	C	1866 (JN13) Cover to England bearing 6d Red-Brown Perf FFQ cancelled by 'Lyell' Manuscript cancel and tied by a light obliterator cancel. Has London Paid AU 25 66 cds on the front. Backstamped 'Christchurch' cds. Light soiling. Westport Postal District Item (1) PHOTO-PLATE 18	750
795	C	1868 (FE14) Cover bearing 2d Blue Perf FFQ SG 114 cancelled with 'Te Muka' (T) Manuscript cancel tied by light obliterator. The cover is addressed to 'To the Right Hon/Postmaster Gen/Christchurch' Backstamped Christchurch. Timaru Postal District item. Very Scarce (1) PHOTO-PLATE 18	600
796	C	1868 (NO3) Cover addressed to H.P. Hatton England (the cover is not complete and opened out) On the back it has 12x 2d Blue Perforated FFQ's tied by Auckland duplex cancels (2x Rows of 6). Has London Paid 29 DE 68 cds. Fine & Rare Multiple Franking (2/-) Rare Item (1) PHOTO-PLATE 18	2500
797	C	1870 (NO30) Cover to Edinburgh endorsed 'Via S.Francisoco' bearing 6d Red-Brown Perf FFQ Vertical Pair cancelled with Manuscript 'Alf' (Alford Forest) and tied by Obliterator 'C' (Christchurch) cancels. Backstamped Christchurch & Edinburgh. Has rough edges and opened out. Walker Correspondence. (1) PHOTO-PLATE 18	750

FIRST SIDEFACE COVERS

798	C	1874 (OC12) Wrapper with 2d Rose Pair Posted at Wellington to Porangahau. Has 'W9' (Castlepoint) Letter Number OC 14 74 cds on the back. Fine & Scarce (1)	400
-----	---	--	-----

799	C	1877 (AU27) Cover to England bearing 2d Rose Strip of 3 tied by 2 strikes 'A over 86' Obliterator cancels. Backstamped Pukekohe, Auckland & Wells cancels. Very Scarce (1) PHOTO-PLATE 18	375
800	C	1880 (DE) Cover to England endorsed 'Via San Francisco' with 6d Blue pair (Double Rate) Posted at Invercargill. Has red 'Paid Liverpool US Packet cds on the front. Backstamped Bradford/Yorks, Also Cover to England with 6d Blue tied by Auckland duplex cancel with Nottingham backstamp. Nice single & double rate covers (2)	200
801	C	1892/99 1/2d Newspaper - 3x Newspaper Wrappers One to Germany with an additional 1d 1898, Two with additional 1/2d 2nd Sidefaces one to England and the other to Sydney. Also Cover with 5x 1/2d Newspaper values Posted at Kaiapoi to England and the other an Advertising Cover (Henry Hughes/ Consulting Engineer & Patent Agent, Wellington) with 1/2d Newspaper Posted at Wellington to London. Nice lot (5) PHOTO-PLATE 14	250

SECOND SIDEFACE COVERS

802	C	1884 (28MR) Cover bearing 6d Brown tied by Bullseye Obliterator 'A over 93' (Waikoukou) cancel to England. Backstamped Auckland, Nottingham & Bulwell cancels. Slight ageing and a minor tear. Rare marking (1)	500
803	C	1886 (16JY) Cover bearing 6d Brown tied by a light 'Albany St' duplex cancel to British Colombia with a 'Deficient Postage/Fine' (Manuscript 1/-) Postage Due cachet. Backstamped Victoria B.C. & Kamloops/ Brit Col cancels. Minor ageing and soiling (1) PHOTO-PLATE 18	250
804	C	1889 (13AP) Part Parcel label bearing 7x 2d Lilac's Posted at Christchurch with part 'REGISTERED' red cachet & registration blue lines. On the reverse with a fine 'REGISTERED AP15 1889/DUNEDIN' red handstamp (1)	100
805	C	1893 (29MR) Long 'On Bankruptcy/Business Only'/Official Assignee's Office (Christchurch) envelope bearing 2 1/2d Blue Sideface tied by Christchurch Squared cds to Somerset, England. Backstamped Taunton MY 15 93. Has a light crease and roughly opened at top. Interesting Official Mail Cover (1)	100
806	C	1894 (20 JA) 2 1/2d Advertisement (Beecham Pills) tied by Auckland Squared cds to Nord, France. Backstamped Nord & Lille-Gare/Nord French cancels. Nice item (1)	125
807	C	1897 (14JE) Handdrawn Addressed Cover with drawing including the address. Has 2 1/2d Blue 2nd Sideface Posted at Auckland to Masterton. Backstamped Masterton & RPO WN-NA cancels. Minor staining. Interesting Cover (1) PHOTO-PLATE 18	250

1898 PICTORIAL COVERS

808	C	1901 (1JA) Cover endorsed 'Card Only' with 1/2d Green Mt Cook tied by Christchurch cds. Has 'First Day of Century' in blue & 'First of Universal Post' red cachet. Light staining (1) PHOTO-PLATE 17	200
809	C	1908 (21SP) Registered Local Cover with 3d Huias 1907 Reduced tied by Stafford cds to Hokitika. Backstamped Holitika. Has early type registration label. Minor perf staining. Nice single franking on cover (1)	200
810	C	1915 (22MR) Cover to Switzerland bearing 1898 2 1/2d Wakatipu Posted at Pukekohe. Has NZ Post Office 'Officially Sealed' label on the right. Also has red 'Opened By The/Military Censor/NZ' cachet. Backstamped with Swiss part 3 MY 15 cds. Interesting item (1)	300

1D UNIVERSAL COVERS

811	C	1901 (1d JA) QV 1d Brown Printed Postcard uprated with 1d Universal tied by 'CH'CH JUBILEE EXH' tied on First Day cancel. 2 strikes. The Exhibition PO open 1900-01. Fine & Scarce (1) PHOTO-PLATE 18	400
812	C	1902 NZ Govt Department Tourist & Health Postcard with 1d Univ Posted at Pukehou to Delhi, India plus Kaikora North cds; 1904 Pink Terrace Picture Postcard with 1d Univ Posted at Wellington to France; 1906 Lake Manapouri Picture Postcard with 1d Univ Posted at Petone to Crete; 1906 Picture Postcard Mt Egmont with 1d Univ Posted at New Plymouth to Fiji and 1910 Picture Postcard Skippers Bridge with 1d Dom Posted at Timaru to South Africa (5)	300

KGV COVERS

813	C	1935 (10AP) Cover to France with 1d Field Marshal Posted at Linwood. Has 'T/30 Centimes' Postage Due handstamp with 30c, 50c & 1f French Postage Dues stamps tied by 'Rueil-Malmaison' arrival cds. Fine & Attractive Cover (1)	100
-----	---	---	-----

1935 PICTORIAL COVERS

- 814 C Range of Airmail Covers to England incl Flight Covers with a good range of frankings mostly with 1935 Pictorial Stamps or 1940 Centennial stamps. The Rates - 6/3, 1/6, 5/9, 3/6. Have censors 39,3,95,82. Mixed condition (7) 350

KING VI COVERS

- 815 C 1937 (29SP) Cover addressed to 'Raffles Museum, Singapore' endorsed 'By sea to Australia' bearing '37 2x Coronation Pairs Posted at Wellington East. No backstamps (10) 75
- 816 C 1940's NZ Parcel Post - Customs Declaration Printed Form to England (Gift of Food) bearing KGVI 3d Pair & 2x 2/- singles tied by Auckland machine cancel. Form PP23 - 13119-46. Nice item 910 50
- 817 C 1944 (15JE) Censored Cover to England with '40 Centennial 1/2d & 10d/1 1/2d King Edward VIII in Blocks of 4 Posted at Invercargill. Has Censor DDA/177 tape at left (1) 50

ANTARCTICA

- 818 C 1907 (31DE) Cover endorsed 'Per Nimrod' with 1d Universal Posted at Christchurch and addressed to 'Thomas Shaw Esq., King Edward VII Land, South Antarctica. On the front has in red an octagonal 'Christchurch Unclaimed' cachet. Backstamped Brit.Antarctic Expd FE 3 1908 and Lyttelton cancels. The cover has minor staining. Also a Cover Posted from the Antarctic with 'British Antarctic Expd FE 3 08 cds addressed to Wellington. Has 2d Postage Due cachet with Lyttelton transit cancel. Backstamped Wellington machine cancel. The cover has 'ES' (E Shackleton) initials on the front. Interesting Pair Covers. Historical (2) PHOTO-PLATE 18 2500
- 819 U 1908 (10AU) On piece with 1d Universal Pair tied by boxed 'Packet Boat' double-lined handstamp. Has 'KERMADEC IS' cachet at left. (Ex Expedition under Dr Oliver). Fine early Kermadec Island item (1) PHOTO-PLATE 18 300
- 820 C 1908 (FE27) Benoni White Tourist & Health Resort Picture postcard bearing 1d Universal Booklet stamp tied by 'BRIT.ANTARCTIC EXPD' cds addressed to JJ Kinsey Esq, Christchurch NZ. Fine Item (1) PHOTO-PLATE 18 300
- 821 C 1930 (13MR) NZ Post Office Telegraph sent by Richard Byrd to the President Garr NZ Institute, Christchurch with a Telegraph Office, Christchurch cancel. Interesting Item (1) 200

AIRMAIL COVERS

- 822 C 1919 (16DE) Picture Postcard endorsed 'Air Mail' Posted on Dargaville-Auckland First Flight addressed to Mr J Dickey, City Road, Auckland. Has 'To Pay/2d/Double Deficient Postage' black cachet with 2x 1d 2nd Type Dues tied by 'Letters Carriers/Auckland 17 DE 19 cds'. The card has light staining. Maybe the only First Flight Posting with Postage Due Usage. (1) PHOTO-PLATE 18 950
- 823 C 1921 (9MY) 'Per Aerial Post' Whangarei to Auckland Flight Cover. Has forged cachet and Whangarei cancels (1) 100
- 824 C 1954 Formular Airletter bearing KGVI 8d Posted at Dunedin to Holland. Has boxed 'Salvaged Mail/ Aircraft Crash/Singapore 13.3.1954' red cachet. Nice Air Crash Cover (1) 60
- 825 C 1963 (2JY) NAC KAIMAI DC-3 Crash Cover (Bycroft Biscuits Advertising Cover) Posted at Otahuhu to Gisborne. Also with Ambulance Envelope (2) 500
- 826 C 1963 (3JY) City of Hastings DC-3 Kaimai Crash Cover Scarce (1) 400

EXHIBITION COVERS

- 827 C 1885 (AU24) EXHIBITION WGTON coin cds backstamped on the back of 2nd Sideface Cover bearing 2x 1d Rose Pair Posted from Napier. Rare Exhibition cancel and fine strike (1) PHOTO-PLATE 18 1250

METER COVERS

- 828 C 1930's 6x Mail Tags addressed to Mr EC Gibbs, Utiku - 4x Jones Bros Ltd/Motor & Cycle Importers and 2x John Chambers & Sons Ltd, Auckland. all have red Meter cancels cancelled by Parcel Obliterator cancels (6) 100

MILITARY COVERS

829	C	1901 (6AP) MILITARY POST OFFICE NEWTOWN PARK/FREE Boer War Camp handstamp in Green with 'WGTON SOUTH' cds to a local address. Roughly opened at top. Rare (1) PHOTO-PLATE 14	750
830	C	1902 (18AP) Printed 'New Zealand XTH CONTINGENT/ADDINGTON CAMP,CHRISTCHURCH envelope with violet 'MILITARY POST OFFICE/ADDINGTON/FREE' handstamp plus Christchurch cds to Upper Riccarton. Rare Boer War Cover (1) PHOTO-PLATE 14	750
831	C	1902 (MR1) Boer War Cover with 'Military Post Office/Te Papapa/Free' blue handstamp to Queensland. Backstamped Queensland part cds. Roughly opened at top. Rare cancel (1) PHOTO-PLATE 14	750
832	C	1913 (30MR) Picture Postcard bearing 1d Dominion tied by Christchurch machine cancel. Has 'Regimental/CEMS/Institutes' violet cachet. Territorial Period (1)	200
833	C	1914 (OC29) Stampless Western Australian Picture Postcard with part Troopship No 12 oval Expeditionary Force violet cachet to NZ. Has a minor corner crease (1)	100
834	C	1915 (15SP) WW1 Cardboard Field Service Postcard with Ink Sketch endorsed 'The Turkey Trot' showing advancing NZ Troops chasing a Turkey with the words underneath it says 'The Bird: There now! I knew I could make the colonials run'. Has NZ Base Army PO cds to NZ with Matawai 21 OC 15 receiving cds. Fine historical item (1) PHOTO-PLATE 14	600
835	C	1915 (1DE) Cover Posted at Nelson (with stamp removed to Knights, Transvaal, South Africa. Has Knights 11 MR 16 cds on the front. Boxed Unclaimed cachet. Backstamped Knights 10 JA 16, Returned Letter Office/Johannesburg & Dead Letter Office/Wellington 27 AP 16 blue cds. Interesting Item (1)	100
836	C	1915/16 4x Picture Postcards - 2x Marama Hospital Ship cachet Cards one in Red & one in Black; NZ General Hospital Cairo cachet and 1x Military Recreation Free F Cachet in red. Fine lot (4)	150
837	C	1916 (8MY) Stampless Cover with boxed 'Posted By a New/Zeland Wounded/Soldier at the New/Zealand Military/Hospital/Walton-On-Thames' violet cachet to Surrey plus Walton-On-Thames cds. Fine & Scarce (1)	250
838	C	1917 2x Samoan Picture Postcards Stampless endorsed 'Prisoner Of War' Posted at Apia both addressed to 'Herr Theodor Brenner' one to Motuihi and the other to 'Fort Cantly, Devonport'. Both with 'Passed By The/Military Censor/NZ' violet cachet. One with boxed 'Passed By Censor/2/GRI Samoa' green boxed cachet. Corner fault on 1 Card. Nice items (2) PHOTO-PLATE 14	1000
839	C	1917 Samoan Picture Postcard Stampless endorsed 'Prisoner Of War' addressed to 'Herr Theodor Brenner, Fort Cantly, Devonport, Auckland' Has boxed 'Passed By Censor/2/GRI Samoa' green cachet plus 'Passed By The/Military Censor/NZ' violet cachet with Wellington 27 MR 17 cds. Fine item (1) PHOTO-PLATE 17	600
840	C	1918 Picture Postcard written from Etrembiers dated 1 Aug 1918 addressed to Paris endorsed 'Infirmerie Hospital Neo-Zelandais a Etrembiers' cancelled by 'CRF Comite Britannique/Hospital/Neo-Zelandais/ Etrembiers Par Annemasse (Hte Savoie) Londres' in a double ring in violet. (The New Zealand Hospital at Etrembrieres was established and equipped by the New Zealand Government in 1916 as a Hospital for Refugees (women and children) made homeless by the Germans. Fine & Very Rare WW1 item. (1) PHOTO-PLATE 14	1350
841	C	1918 Stampless On Active Service Cover to Endcott/Transvaal (with receiving cds) and also with 'Capetown/Paquebot' cancel. Has Troopship 'Passed By Censor No 12' in blue handstamp (For Troopship Willochra). Backstamped Endcott & Devon cancels. Late useage Troopship marking (1)	150
842	C	1942 (30JL) Censored Cover with 3/- Mt Egmont to POW C/- NZ House London Posted at Oamaru. Readdressed to NZ Expeditionary Force British Prisoner, Geneva, Switzerland. Censor No 66 cachet. Fine & Scarce (1) PHOTO-PLATE 14	150
843	C	1943 (2JU) Censored Inwards Cover Posted at Berlin to the red Cross in Geneva and then redirected to Odo Strawe, Internment Camp, Somes Island, Wellington NZ, then crossed out and redirected to the NZ Red Cross Society. Has Censor Tape. No NZ Markings. Interesting Civilian Mail item (1)	250
844	C	1943 (9AU) Stampless POW Internment Camp/Pahiatua cachet on the reverse. Has boxed 'Exempt from postage' cachet. Censor Octagonal 'Passed DDA/3' violet cachet. Addressed 'To the Public Trust Office, Wellington' Fine item (10)	400

MISCELLANEOUS

845	C	1860 Entire from Lyttelton to Beer Brewers in Edinburgh (missing stamp), 1898 2nd Sideface Cover with 'F Lill' endorsement on the back (Involved in cricket, draught matches plus lodge/friendly societies), 1970 Car Licence (with 50c stamps), 1946 Driver's Licence and Radio Call Sign Card (5)	50
846	C	1904 KEVII 1d Printed Postcard - much travelled card Posted and redirected around the World and back to New Zealand via South Australia, Ceylon, Egypt, Scotland, Canada, USA & Honolulu. At each stage additional stamps have been added and then readdressed. Has various cancels and cachets. Ageing. Interesting (1) PHOTO-PLATE 14	200
847	C	1908 (3JA) Leaf Mail with 1d Universal added and tied by 'Stratford' cds addressed to Wanganui. Has a brief message. Interesting (1)	100
848	C	1913 (NO22) 'SPECIAL POLICE CAMP/KINGS WHARF' violet cachet on Cover with 1d Dominion tied by Exhibition Opens Auckland machine cancel to a local address. Rare Maritime Wharf Strike cancel (1) PHOTO-PLATE 14	750
849	C	1940 NZ Centennial Exhibition Printed Coloured 'Certificate of Attendance' Souvenir (330x250mm) has light staining (1)	75
850	C	1945 2x Airmail Covers to Switzerland, via London with Health or 1935 Pictorial stamps. Both covers with 'OAT' (Onwards Air Transmission) red cachets - one small, one large. Fine WW2 Period Mails. Very Scarce (2) PHOTO-PLATE 14	500

OFFICIAL COVERS

851	C	1869 (AU17) Long OPSO/Superintendent's Office (Auckland Provisional Government) envelope cancelled with clear 'Free/Auckland-New Zealand' cds with facsimile signature addressed to 'The Inspector of Slaughter House, Newmarket'. Includes a letter as contents. Fine & Interesting item (1)	600
852	C	1887 (22SP) OPSO Treasury/Wellington small env Posted at Auckland and addressed to Mssrs Chamtaloup & Cooper (Book & Map Sellers) Auckland. Light staining (1)	50

POSTAGE DUES

853	C	1900 (DE27) Cover with 1d NSW Pictorial Posted at North Sydney to Sydney, then redirected to PO Napier, NZ. Has 1d Due added and tied by Napier cds. Also boxed 'Not Known/Letter Carriers/Napier' violet cachet. Minor staining to the cover. Interesting item. Minor blemishes at the top. Interesting redirection cover. (1)	375
854	C	1904 (DE20) Tasmanian Picture Postcard (Browns River Beach) with 1d Pictorial cancelled to Nelson, NZ. Has 'To Pay/2d/Double Deficient Postage' Postage Due cachet. Has 2x 1d 1899 Dues tied by Stoke cds. Also Nelson cds. (1)	50
855	C	1922 (AU17) Inwards Picture Postcard from London with 'To Pay/1 1/2d/Deficient Postage' Postage Due cachet. Has 1d 2nd Type due tied by Palmerston North/Letter Carriers 26 SP 22 cds. Also an extra KGV 1/2d Green added with manuscript marking. Interesting Mixed Franking Postage Due Item. Scarce (1) PHOTO-PLATE 14	200
856	C	1934 (28JE) Uprated KGV 1d Field Marshal Lettercard with '31 7d Air Posted at Greenwood's Corner Posted on Trans-Tasman Airmail/Faith In Australia Flight. Has 'To Pay/4d/Double Deficient Postage' cachet plus T/40 Postage Due cachet. 2x 2d 2nd Type Postage Dues tied by Mt Albert cancels added. Backstamped Wellington & Air Mail/Sydney cancels. Card has light ageing. (1)	125
857	C	1940 (15JE) Cover with 1d Centennial (Captain Cook) Posted at Wellington to Wanganui. Has 'To Pay/2d/Double Deficient Postage' cachet with 2x 1d 3rd Type Dues tied by Postmen's Branch/Wanganui cds. (1)	150
858	C	1940 (19JA) Cover with KGVI 1d Red & 1940 2d Centennial tied by 'Wellington Late Fee' cds to Grey Lynn, Auckland. Has 'To Pay/2d/Double Deficient Postage' Postage Due cachet plus 'Late Fee' endorsement. 2d 3rd Type Due added tied by Grey Lynn/Postmen cds. Minor perf staining. (1)	75
859	C	1941 (8JA) Cover Posted without stamps Posted at Tokaanu to Christchurch. Has 'To Pay/4d/Deficient Postage' cachet with 2x 2d 3rd Type Dues tied by Christchurch/Delivery Counter cds. Light ageing (10)	75
860	C	1941 (8MY) Sunlight Soap Advertising Cover Posted with no stamps at Petone to a local address. Has 'To Pay/4d/Deficient Postage' black cachet. Has a light vertical crease and minor ageing (1)	50

861	C	1951 (22JN) Airmail Cover bearing '50 1d Canterbury Centennial & 2d KGV I Posted at Christchurch to Dunedin. Has 'To Pay/6d/Deficient Postage' cachet with 2x 3d 3rd Type dues tied. The cover has a minor crease. (1)	200
862	C	Collection Covers all with Postage Due Cachets - to Switzerland (2) 1909 & 1925 Covers; also 13x Covers to USA 1906/51. A few covers have overseas Postage Dues tied (15)	100

SHIPMAIL COVERS

863	C	1894 Inwards Cover addressed to Mr C Karlson, Dargaville, North Auckland, NZ. with 'Saved from wreck of the/Wairarapa' Shipwreck Blue Cachet. Backstamped Auckland & Dargaville. (The ship wrecked at Great Barrier Island 1 Nov 1894). Also a lettercard with reference to the Wairarapa Shipwreck disaster. (2) PHOTO-PLATE 14	475
864	C	1905 (23FE) Picture Postcard bearing US 2c Washington tied by light 'Packet Boat' handstamp to Australia. Has Orange-red 'NZ Marine PO/RMS Ventura' cancel. Good strike. Card endorsed 'Per S Ventura' Fine & Scarce (1)	250
865	C	1930 (AU2) Meter Cover to New York watersoaked with 'Salvaged From/SS Tahiti/Lost At Sea' violet cachet. Backstamped San Francisco. National Bank of NZ envelope. Scarce (1)	250

EXPRESS DELIVERY COVERS

866	C	1939 (10MR) Airmail Express Mail Cover with '35 2d Pictorial & 6d Fernleaves tied by Napier Registration cds to Christchurch. Has 'Express' Orange label at bottom left. Light ageing (1) PHOTO-PLATE 14	250
-----	---	--	-----

POSTMARKS

867	U	Addington Camp/Christchurch (CH) 1913-13 Fine oval cancel on KGV 1d Postal Stationery cutout. Fine strike. Rare Maritime Wharf Strike (1) PHOTO-PLATE 8	500
868	C	Broken River (CH) 1906-10 Picture Postcard (Broken River, Midland Railway) with 1/2d Mt Cook tied by B coin 21 AU 08 cds to Linwood. The Postcard has a slight corner crease. Scarce Railway item (1)	100
869	U	Castlecliff (WG) 1891-1989 1d Rose 2nd Sideface pair with 2x violet Straight-Line handstamps with Manuscript 15/5/93 date. Fine & Very Scarce (2) PHOTO-PLATE 8	250
870	C	Citizens' Fete (DN) 1914-14 Cover with 1d Dominion tied by complete strike to a local address. The cancel is a little overinked (1)	300
871	C	Citizens' Fete Dunedin (DN) 1918-18 Fine C Class strike teing 1d Dominion on Dunedin Picture Postcard. Fine & Very Scarce (1) PHOTO-PLATE 14	500
872	U	Douglas Road (NU) 1905-06 F Class (Squared) 25 SP 07 cds on 1d Universal. Rated 9 Scarce (1) PHOTO-PLATE 8	100
873	U	Exhibition DN (DN) 1889-90 Fine A Class coin DE 17 89 cds. Fine & Very Scarce (1) PHOTO-PLATE 8	600
874	U	Georgetown (OU) 1879-1975 Relief type cds 6 JA 38 fair strike and light in parts on '35 1d Kiwi stamp on piece (1) PHOTO-PLATE 8	100
875	U	Hampden (OU) 1862-1988 Relief type cds 19 FE 45 tieing '35 2d Whare complete on piece. A little overinked. Scarce (1) PHOTO-PLATE 8	100
876	C	Kereru (NA) 1862-19 Maori Postcard with A coin 2 DE 14 receiving cds. Fair strike. Rated 8 (1)	100
877	C	Maoro (AK) 1888-98 Nearly complete A coin 6 JA 94 cds on 2d Lilac 2nd Sideface. Rated 10. Rare (1) PHOTO-PLATE 8	500
878	U	Matarae Military Camp (DN) 1914-14 Part '(MIL)TARY CAMP 30 AP 14 cds on 1d Dominion. Scarce (1) PHOTO-PLATE 8	100
879	U	Nevis (DN) 1864-50 Manuscript cancel 18/1/97 on 2d 2nd Sideface. Scarce (1) PHOTO-PLATE 8	250
880	C	North East Harbour (DN) 1867-1926 Cover with 2d Lilac tied by fine complete Manuscript 6/10/84 cancel to Port Chalmers and tied by Obliterator 'O' cancel. Backstamped Port Chalmers & Dunedin cancels. Minor ageing. Very Scarce. Fine Otago Postal History Cover (1) PHOTO-PLATE 14	750

881	U	Obliterator cancels - 019 on Imperf 6d Yellow brown Imperf FFQ, c/21 on 3d 1st Sideface, V/4 on 2d 1st Sideface, 028 on 1d 1st Sideface and 6x TH/20 cancels on 1d or 2d 2nd Sidefaces (10)	50
882	U	Oparau Ferry (HN) 1909-23 1d 1920 Victory Pair with overinked J Class cds complete. Rated 9. Very Scarce (2) PHOTO-PLATE 8	200
883	U	Pahautea (MS) 1921-27 Part J (missing last 'A') on 2d 1920 Victory Ovpt 29 AP 22. Rated 9 Scarce (1) PHOTO-PLATE 8	150
884	U	Papatawa (PM) 1896-07 2d Lilac 2nd Sideface with a complete Manuscript 20/2/94 cancel. Has perf staining. Very Scarce (1) PHOTO-PLATE 8	300
885	U	Pataua (WR) 1907-08 1d Universal with Manuscript JL 27 ? cancel. Fine & Very Scarce (1) PHOTO-PLATE 8	250
886	U	Poutu (WR) 1888-18 Light C Class ? JL 16 on KGV 1 1/2d Local complete on piece. Rated 10 (1) PHOTO-PLATE 8	200
887	U	Public Services Queens Carnival/Colosseum/Post Office Christchurch 1916 (CH) 2x Oval violet special cancels tying KGV 2d Yellow Recess Block of 4. Fine & Rare special cancel (4) PHOTO-PLATE 8	500
888	U	Remuera Camp (AK) 1946-46 Fine J Class complete on piece 10 JL 46. Rated 9 (1) PHOTO-PLATE 8	100
889	U	Salisbury (TU) 1900-26 H Class (English) 26 FE 14 cds 1d Dominion piece. Rated 8 Scarce. Good strike (1) PHOTO-PLATE 8	100
890	U	Tawataia (MS) 1893-18 2x 1/2d Newspaper stamps (split) with full Manuscript 8 August 93 cancel plus a part A coin cds 3 FE 94. Missing 'T'. Scarce (3) PHOTO-PLATE 8	150
891	C	Tawataia (MS) 1893-18 Picture postcard with 1d Universal 27 SP 05 coin cds to Alfredton. Rated 7 (1)	75
892	U	Te Roti (NU) 1894-17 Manuscript 16/11/94 cancel on 2d 2nd Sideface. Scarce (1) PHOTO-PLATE 8	250
893	U	The Delta Air Force - C (BM) 1943-44 Fair J Class on piece 3 MY 44. Light in parts. Rated 10. Very Scarce (1) PHOTO-PLATE 8	200
894	U	Tokatoka (WR) 1888-1900 A coin 8 JE 94 cds not complete plus Tokatoka Wharf part cds with a 50% strike. No date (2) PHOTO-PLATE 8	100
895	C	Turangarere Railway (WG) 1909-10 Picture Postcard with KEVII 1/2d Green tied by H Class (English) 15 MY 10 cds. Rated 9. Very Scarce Railway cancel (1) PHOTO-PLATE 14	200
896	U	Turua (TH) 1878-1988 Manuscript cancel on 2d 1st Sideface 11/5/7? plus a 'A over 3' Obliterator cancel. Light cancel. Scarce (1) PHOTO-PLATE 8	250
897	U	Waihoa Forks (TU) 1d 1900 Pictorial 5 JE 01 A coin cds Good strike Rated 9 (1) PHOTO-PLATE 8	150
898	U	Walter Peak (IN) 1914-23 Part C Class with the name complete but missing most of the date but dated '23'. Rated 10 (1) PHOTO-PLATE 8	250
899	U	Wardville (HN) 1907-16 1d Universal with fine Manuscript 19/07/19?. Scarce (1) PHOTO-PLATE 8	300
900	U	Westerfield Military Camp (CH) 1943-43 Good J Class tying '35 2d Whare Official 14 JE 43 on piece. The cancel cut around. Rated 9 (1)	100
901	C	Whangateau (AK) 1904-20 Picture Postcard with 1d Universal tied by H Class (English) 24 JA 06 cds. Fair Strike to England. Rated 10 (1)	300

NEW ZEALAND POSTAL STATIONERY

NEWSPAPER WRAPPERS + LETTERCARDS

902	C	1900 (1MY) Uprated 1/2d Newspaper Wrapper with additional 1d Terraces Posted at Napier to England. Light creasing and soiling (1)	50
-----	---	---	----

KILOWARE

WORLD

903	U	On Paper Worldwide Range (3kgs)	450
904	U	On Paper Worldwide Range On Paper. Good Range (2.7kgs)	400

LITERATURE

NEW ZEALAND

905	U	1913 Joliffe 'The History of New Zealand Stamps' Complete including the 2d Full Face Queens Damaged Plate reprints. Has light toning and a worn spine. Very Rare (1)	300
906	U	Magpie Moth by Takeshi Watanabe, Bibliography NZ Cinderellas by DE Hurley, NZ Postcards Rates & Regulations to 1939 by Alan Jackson, Postal History Manawatu by RM Startup, NZ Registered Mail Markings by Rev Voyce, Century Philately by WN Strachan, NZ & UPU o 1907 by Colin Capill, Reigning in the Dinosaur, A History of Government Life Postage Stamps by JW Brodie. Odd Overseas Pacific Islands Catalogues & Books (21)	50
907	U	New Zealand Postal Stationery Catalogues - The 5 Volumes plus an extra Vol 1 - Postcards. Well Used. Great Reference (6)	50
908	U	New Zealand Routes & Rates - the 3 Volumes by Gerald Elliott (3)	100
909	U	Post office 'Registrar of Post Office changes made between 1917-1940 recorded by the Chief Postmaster. Interesting Book (1)	75
910	U	RPS The Postage Stamps of New Zealand Vol 1 NO 513. Has slight spine damage. No dust cover (1)	250
911	U	RPS The Postage Stamps of New Zealand Vol 3 - Postal History No 513. Worn spine. No dust cover (1)	150
912	U	RPS The Postage Stamps of New Zealand Vol 4 No 847. No dust cover (1)	100
913	U	RPS The Postage Stamps of New Zealand Vol 5 - The Pacific Islands No 825 Fine. No dust cover (1)	250
914	U	RPS The Postage Stamps of New Zealand Vol 6 No 187. No dust cover (1)	100
915	U	RPS The Postage Stamps of New Zealand Vol 7 - Postal History No 124 with dust cover (1)	100
916	U	RPS The Postage Stamps of New Zealand Vol 9 - Postal Stationery with dust cover (1)	100
917	U	RPS The Postage Stamps of NZ Vol 2 No 727 incl the plates. No dust cover (1)	50
918	U	RPS The Postage Stamps of NZ Volumes 1, 2 (no dust cover, 4, 6, 7 plus RPS NZ Railway & Revenues (6)	500
919	U	Shipwrecks New Zealand Disasters 1795-1936 by Chas Ingram & Owen Wheatley plus New Zealand Marine & Railway TPO's Their Histories & Postmarks by CW Ward (2)	50

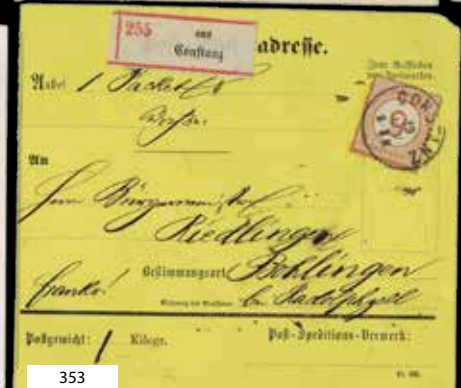
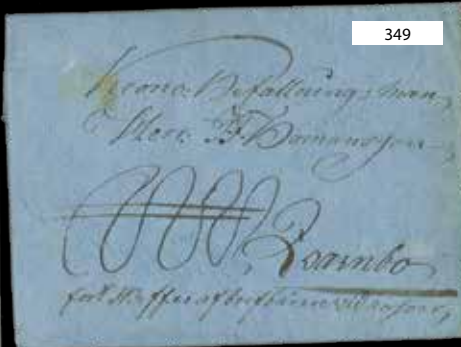
End Of Auction

Thank You For Your Participation

IMPORTANT INFORMATION FOR THOSE CONSIDERING ATTENDING THE AUCTION:

- The Auction Starts at **12.30pm Sharp**
- Auckland City Stamps, **1 Ngaire Ave, Newmarket**
- **Opening Prices** for each lot will be available to bidders in the room at 12pm
- All lots will be available for **viewing** at the venue as follows:
Friday September 1 8.30am – 4.30pm
Saturday September 2 8.30am – 12.00pm
- Please call the office on **0800 78 87 78** with any questions you have prior to the auction



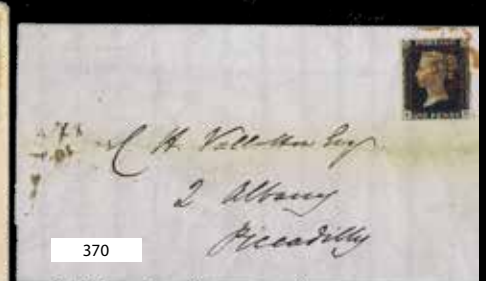




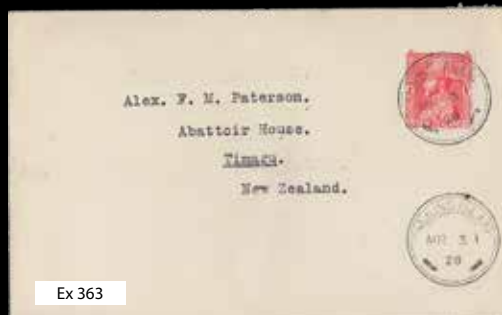
359



367



370



Ex 363



365



364



369



366



368



419



405



403



443



436



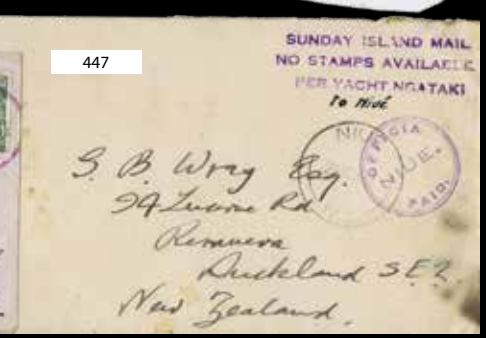
434



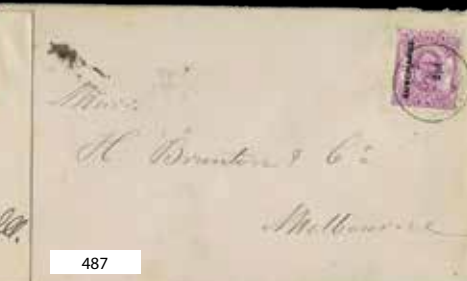
440



446



447







679



711



715



713



731



776



770



766



698



847

Auckland City Stamps

EST. 1974

Licensed Auctioneers



MEMBER OF
New Zealand
Stamp Dealers
Association Inc.
www.nzstda.com